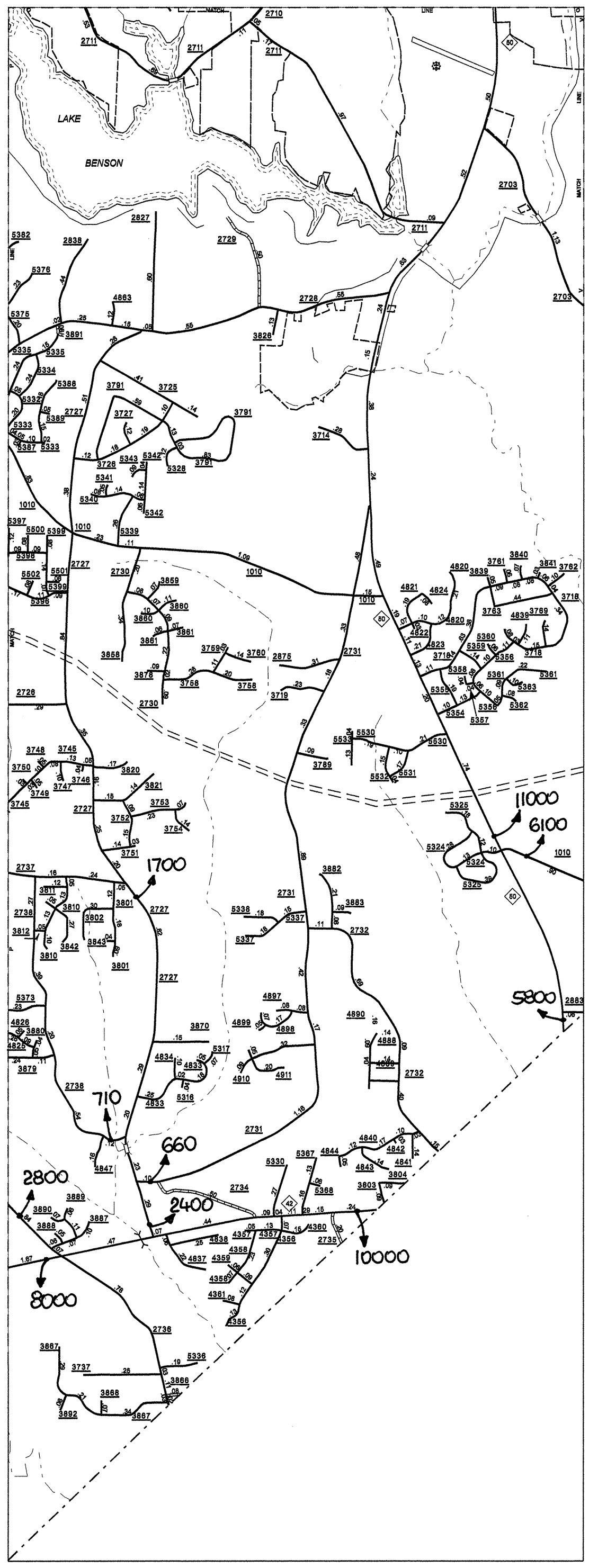


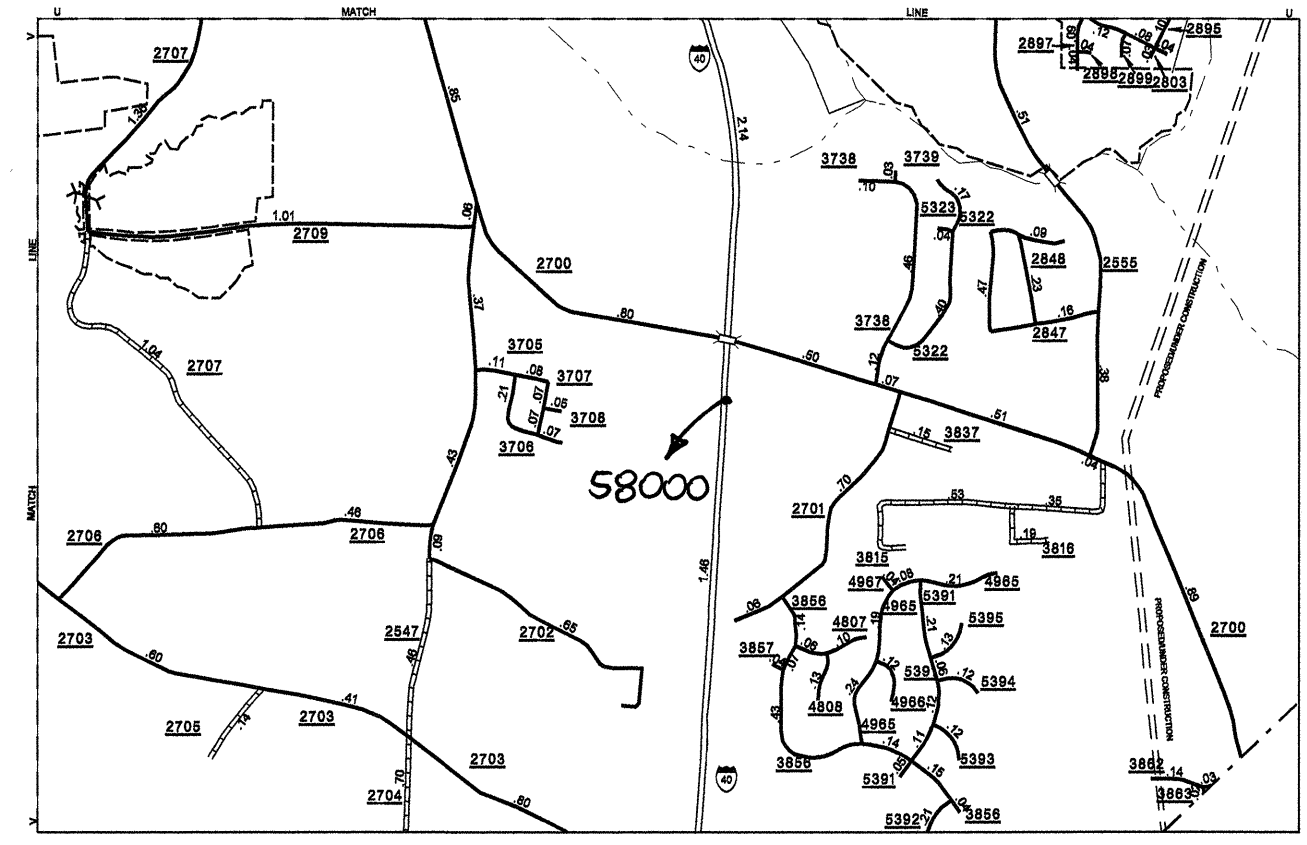
Disclaimer: The GIS Unit's goal is to provide the most accurate information as possible, the magnitude of the data prevents any guarantee of accuracy or completeness. If you find any information that is incorrect, please send your request to the GIS Unit.

COPIES OF THIS MAP ARE AVAILABLE
 AT THE FOLLOWING ADDRESS:
 N.C. DEPARTMENT OF TRANSPORTATION
 INFORMATION MAPPING AND SERVICES
 12200 WOODHOLLOW DRIVE
 RALEIGH, N.C. 27615

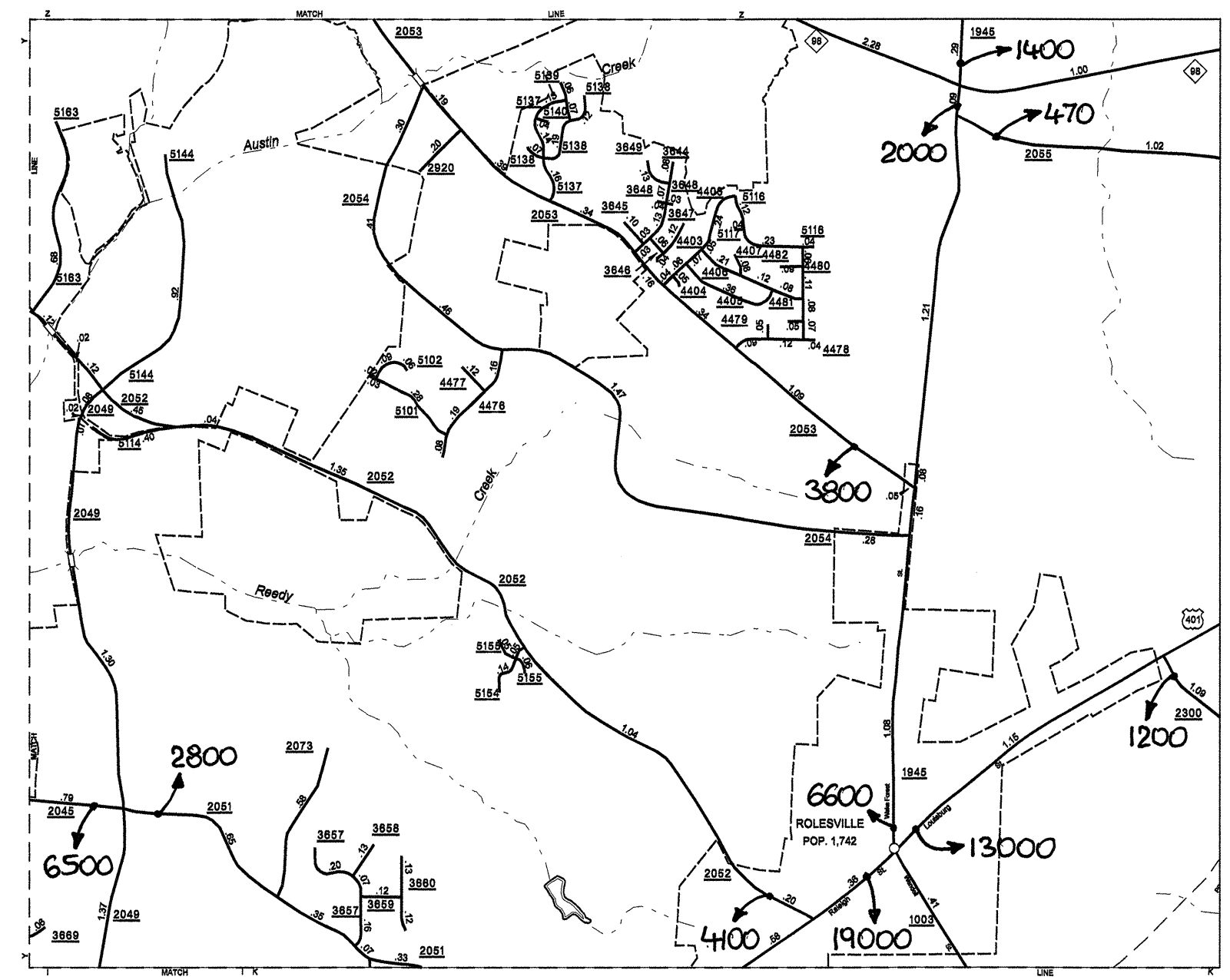
REVISED
3/21/07 MEM
6/24/07 MEM
8/4/07 MEM
8/5/07 MEM
7/23/07 MEM
10/9/07 MEM
12/27/07 MEM



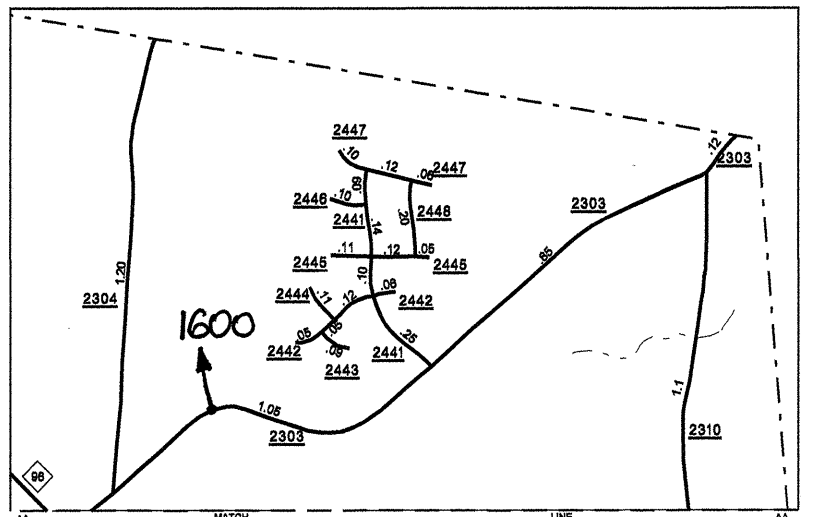
Inset 2



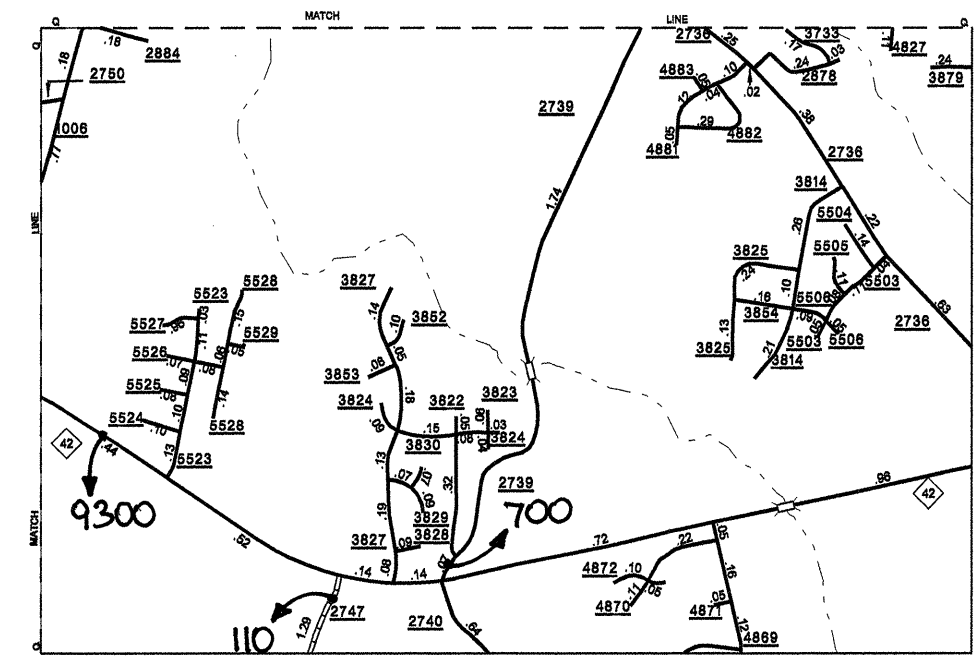
Inset 5



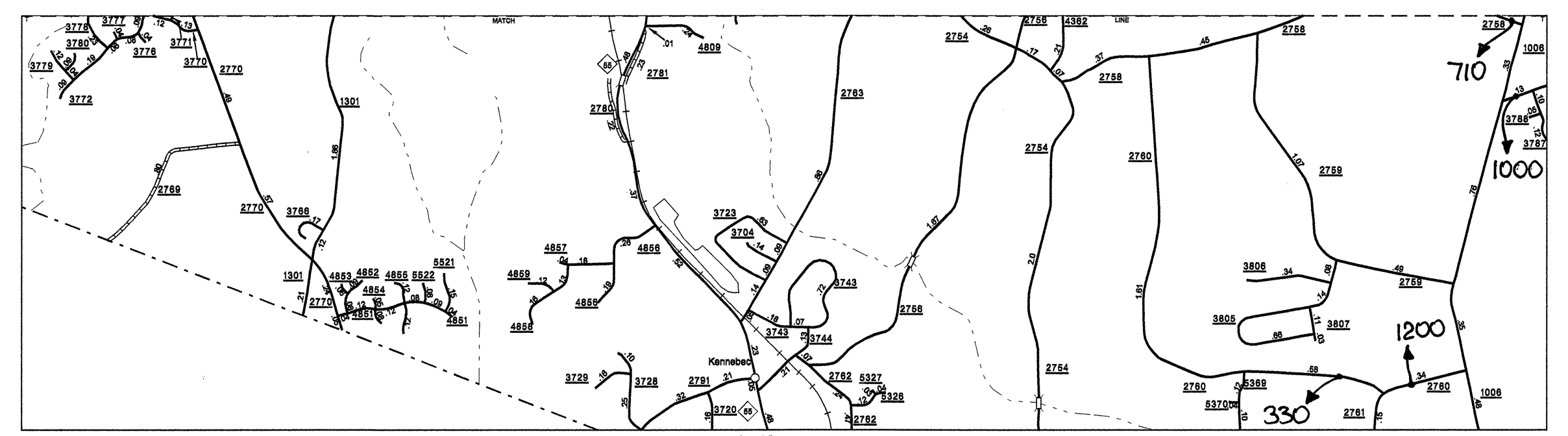
Rolesville



Inset 8

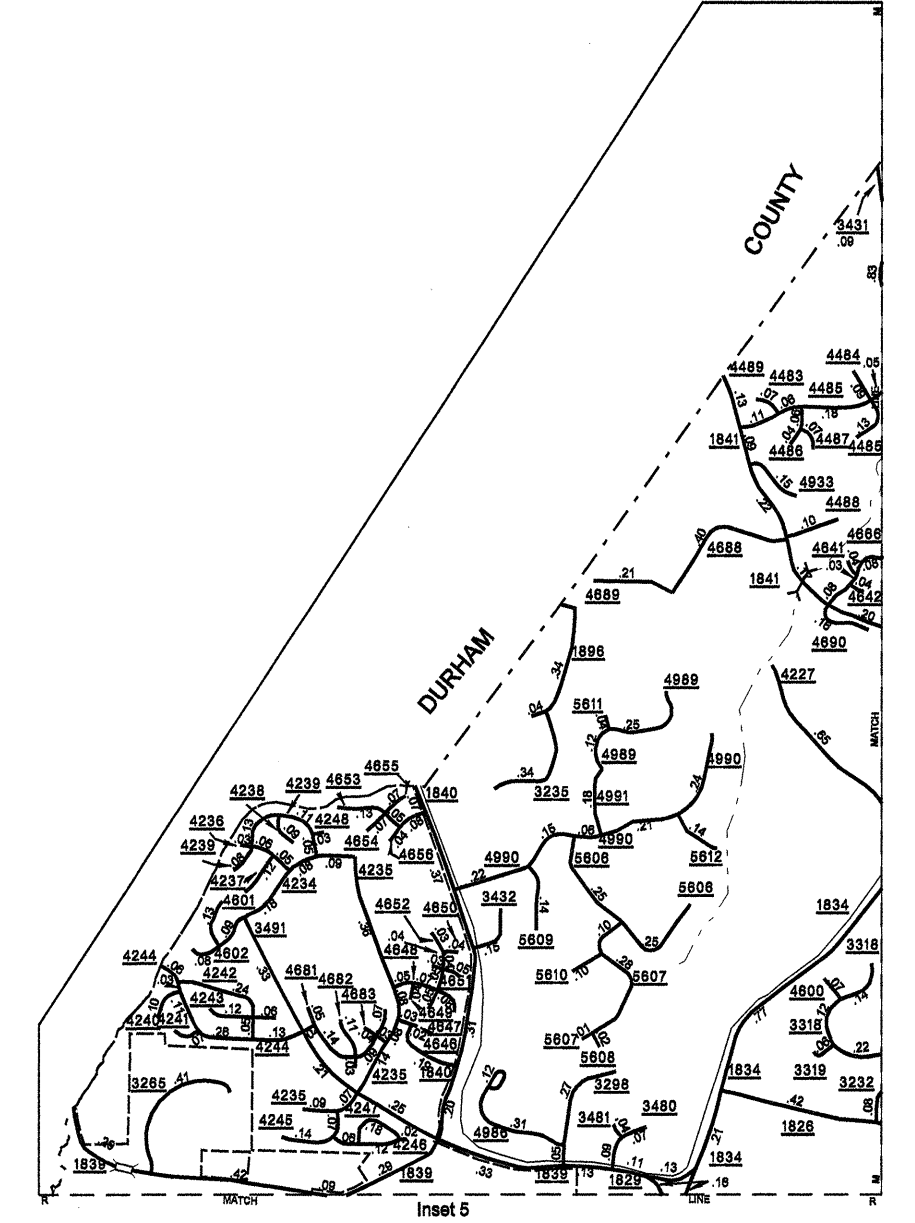


Inset 9

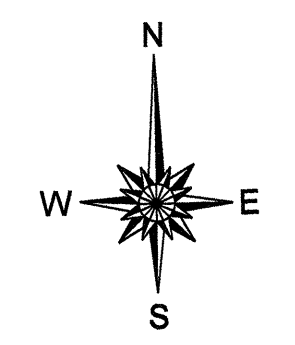


Inset 6

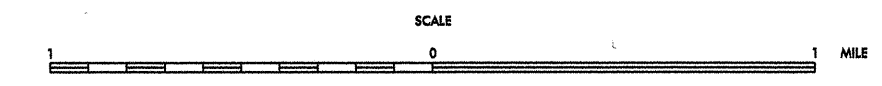
SEE:
2007 RALEIGH
URBAN MAPPING



Inset 5



ENLARGED MUNICIPAL AND SUBURBAN AREAS
2007 AADT
 ANNUAL AVERAGE DAILY TRAFFIC
WAKE COUNTY
 NORTH CAROLINA
GENERATED BY THE
TRAFFIC SURVEY GROUP
TRANSPORTATION PLANNING BRANCH
PREPARED BY THE
 NORTH CAROLINA DEPARTMENT OF TRANSPORTATION
INFORMATION TECHNOLOGY - IMG UNIT
IN COOPERATION WITH THE
 U.S. DEPARTMENT OF TRANSPORTATION
 FEDERAL HIGHWAY ADMINISTRATION



10,000 FOOT GRID BASED ON NORTH CAROLINA PLANE COORDINATE SYSTEM
 POLYCONIC PROJECTION