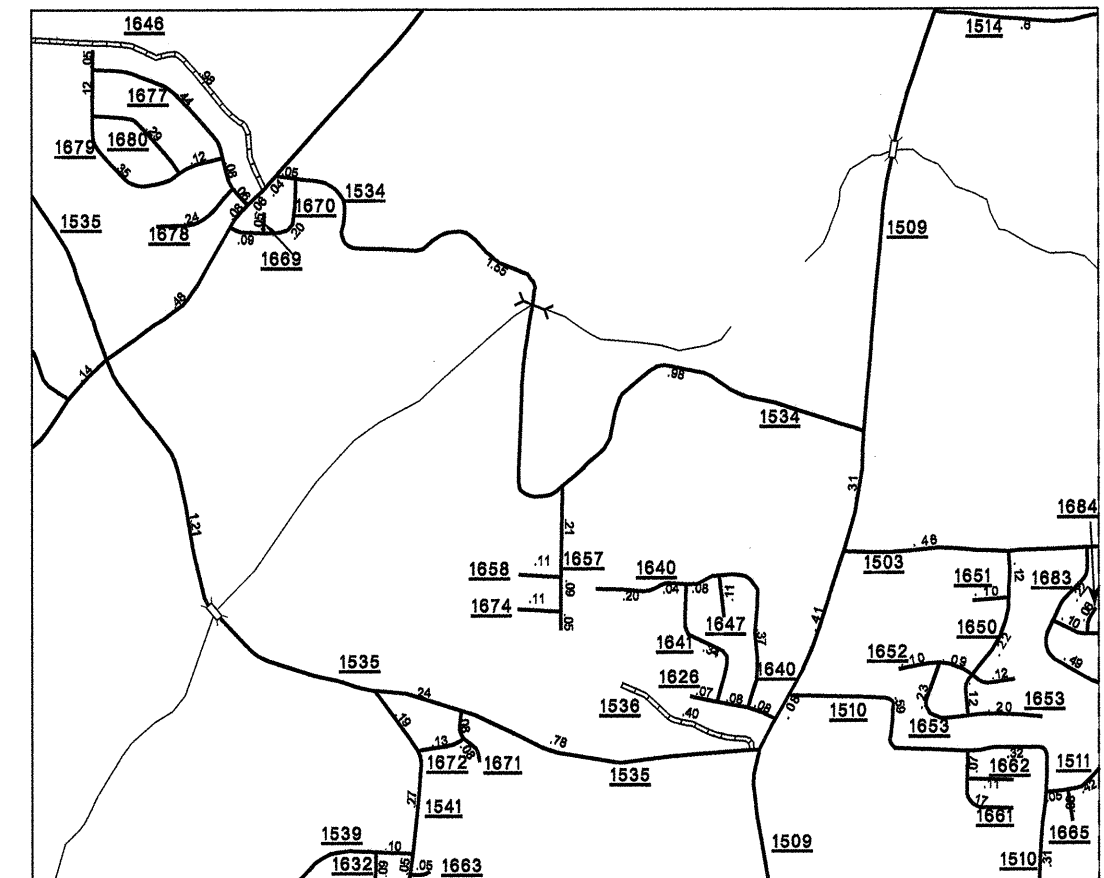
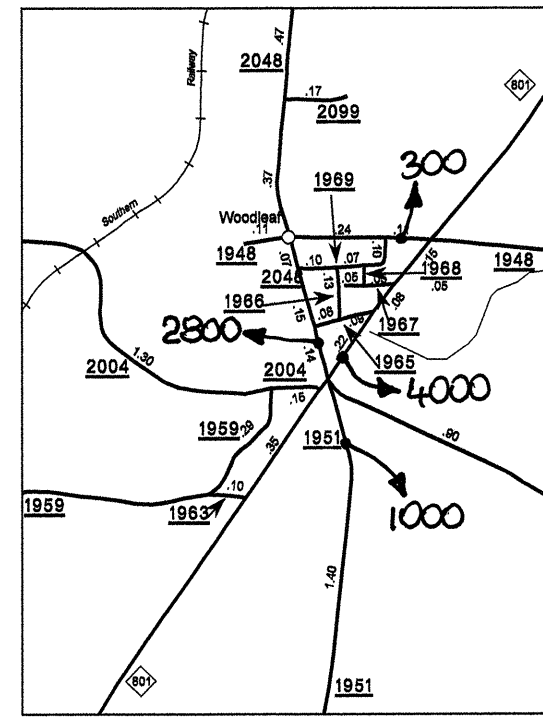
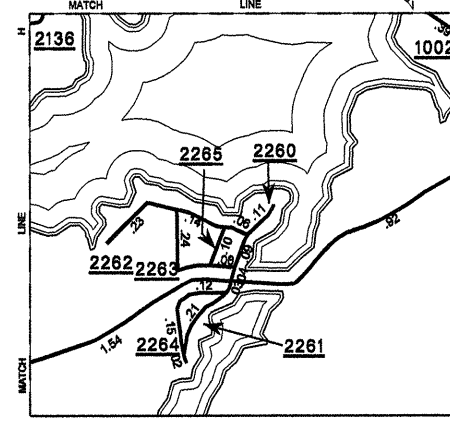
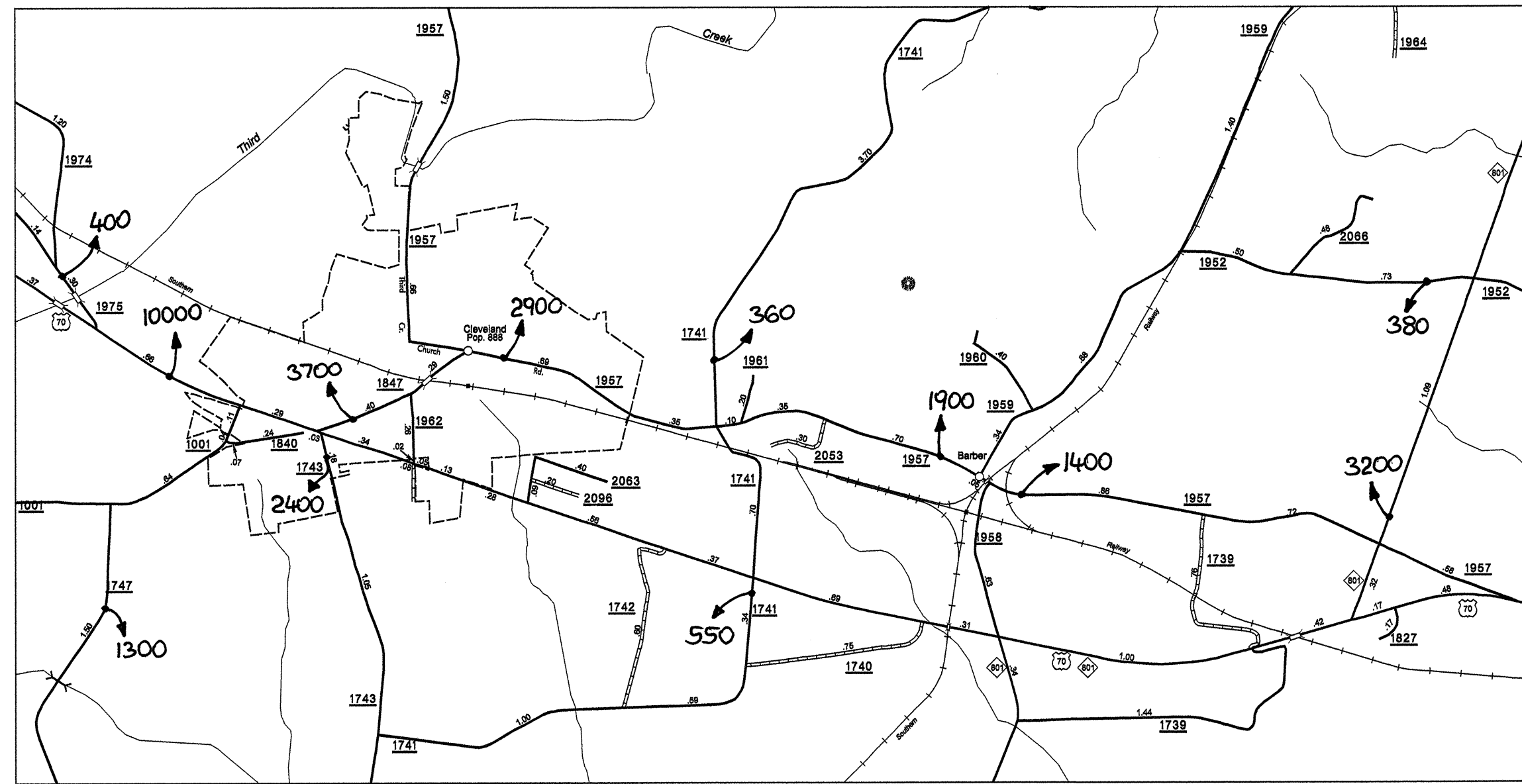


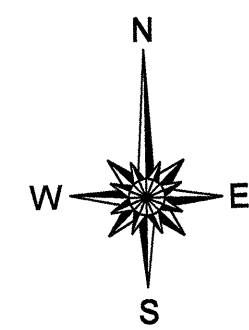
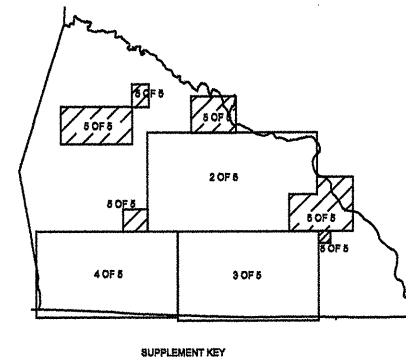
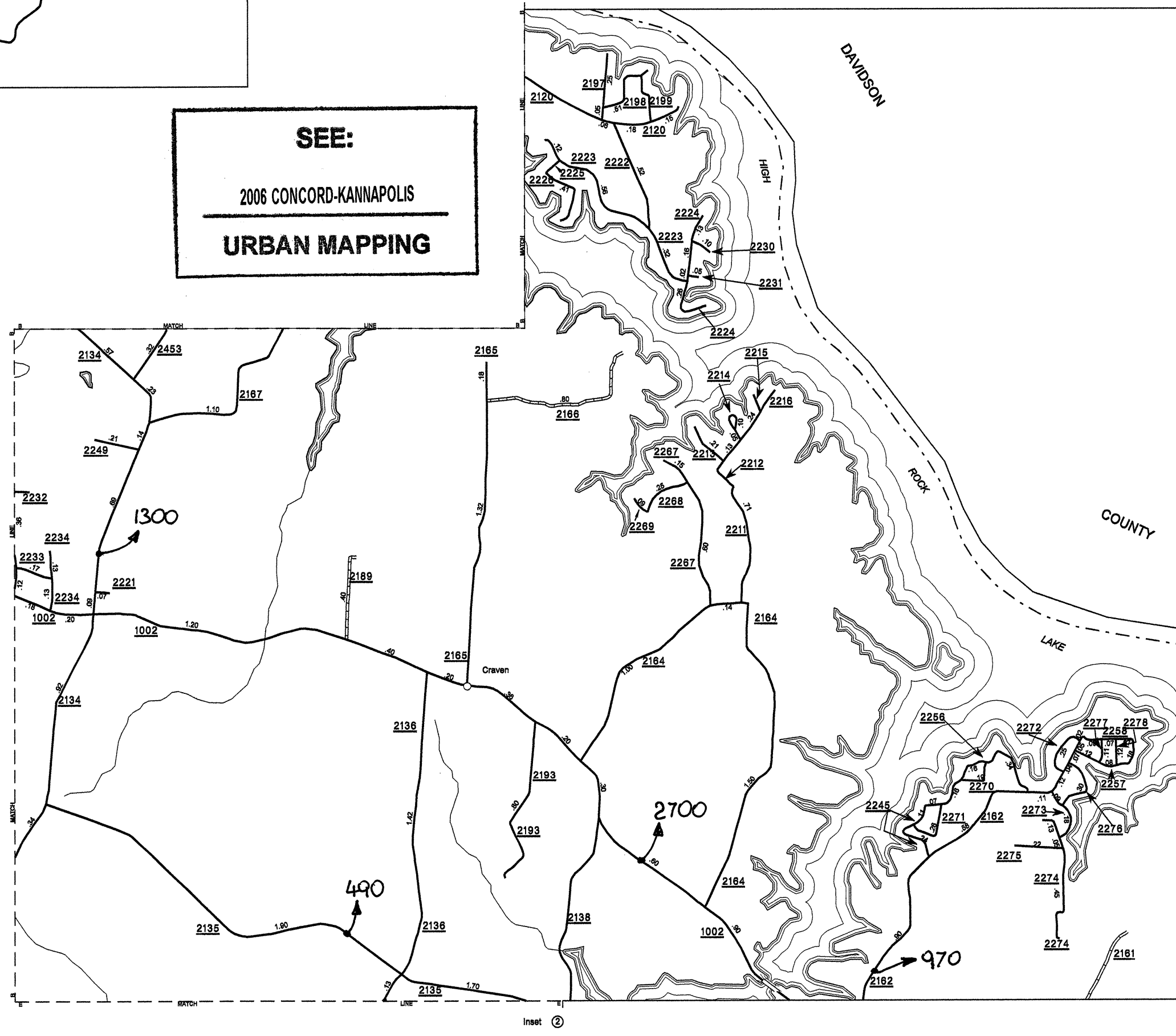
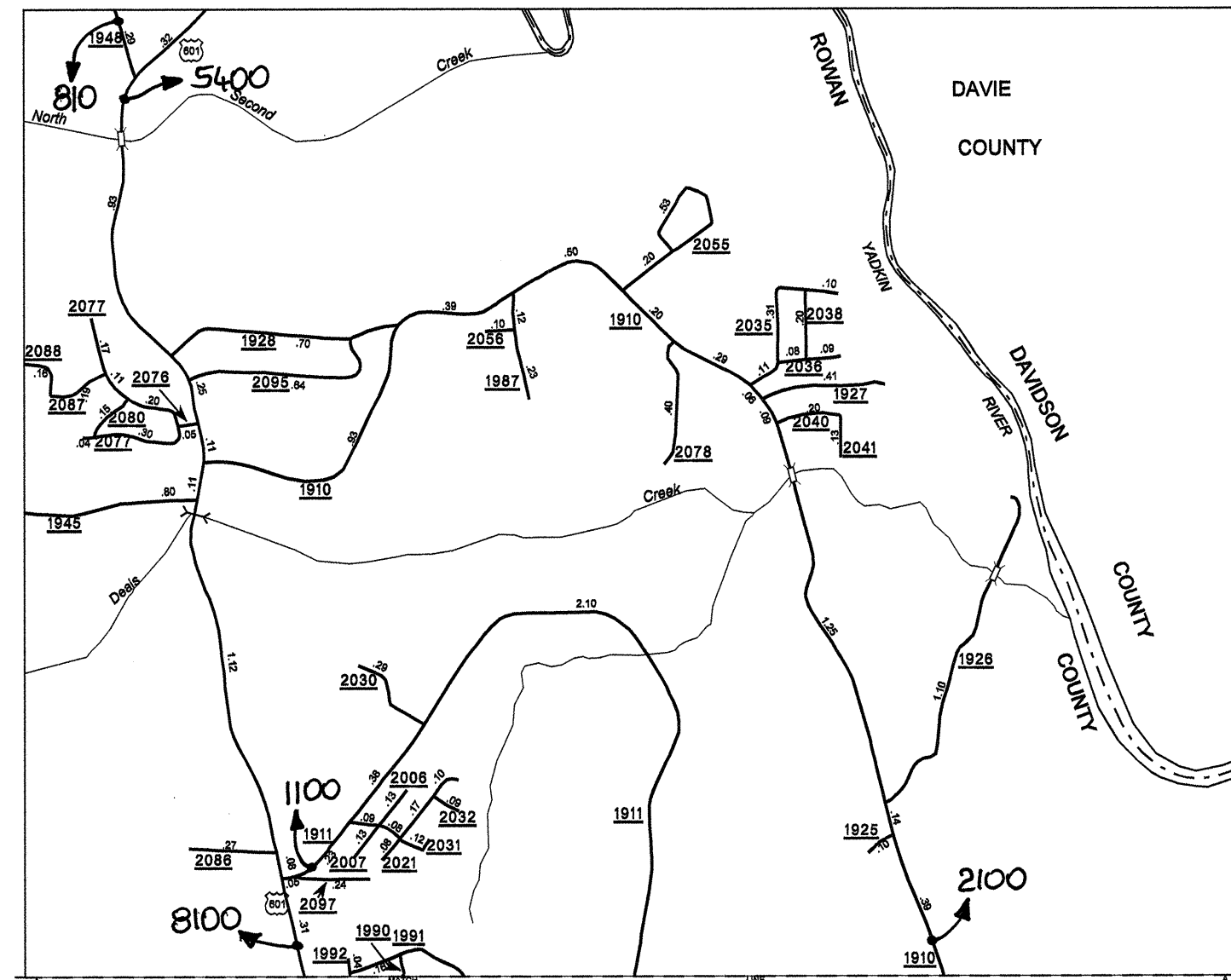
Disclaimer: The GIS Unit's goal is to provide the most accurate information as possible, the magnitude of the data prevents any guarantee of accuracy or completeness. If you find any information that is incorrect, please send your request to the GIS Unit.

ROWAN
 COPIES OF THIS MAP ARE AVAILABLE:
 BY THE NAME OF AN AGENCY, LOCAL GOVERNMENT, OR INDIVIDUAL;
 N.C. DEPARTMENT OF TRANSPORTATION
 INFORMATION SERVICES AND SERVICES
 ADDRESS:
 1000 EAST 7TH STREET
 RALEIGH, N.C. 27601

REVISED	BY
8/23/05	VRT
5/1/05	JMS
8/15/04	JMS
1/18/04	JMS
3/27/03	JMS
4/22/02	JMS
8/11/01	JMS
7/18/01	JMS
10/07/00	JMS
12/07/99	JMS



SEE:
 2006 CONCORD-KANNAPOLIS
 URBAN MAPPING



ENLARGED MUNICIPAL AND SUBURBAN AREAS
2007 AADT
 ANNUAL AVERAGE DAILY TRAFFIC
ROWAN COUNTY
 NORTH CAROLINA
 GENERATED BY THE
TRAFFIC SURVEY GROUP
 TRANSPORTATION PLANNING BRANCH
 PREPARED BY THE
 NORTH CAROLINA DEPARTMENT OF TRANSPORTATION
 INFORMATION TECHNOLOGY - IMG UNIT
 IN COOPERATION WITH THE
 U.S. DEPARTMENT OF TRANSPORTATION
 FEDERAL HIGHWAY ADMINISTRATION

