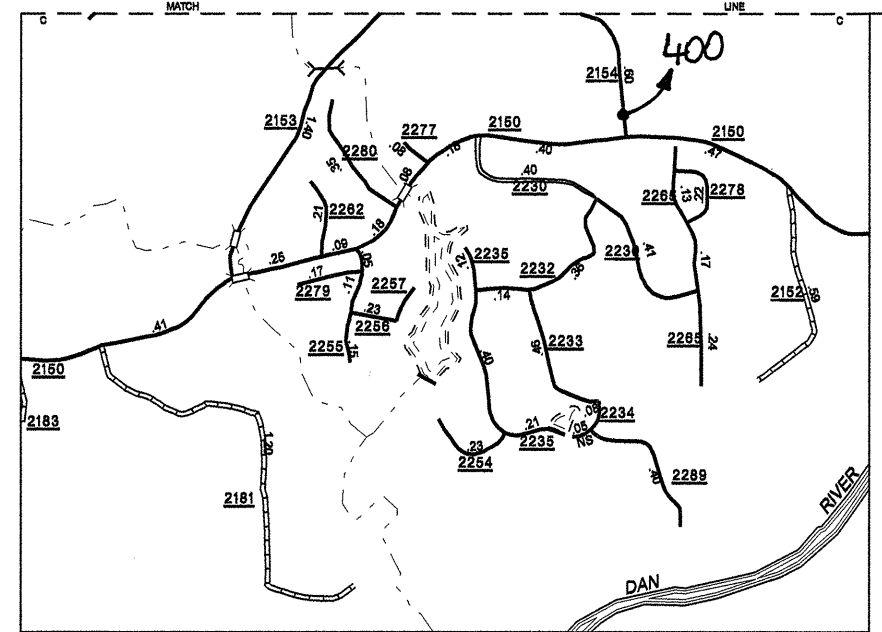


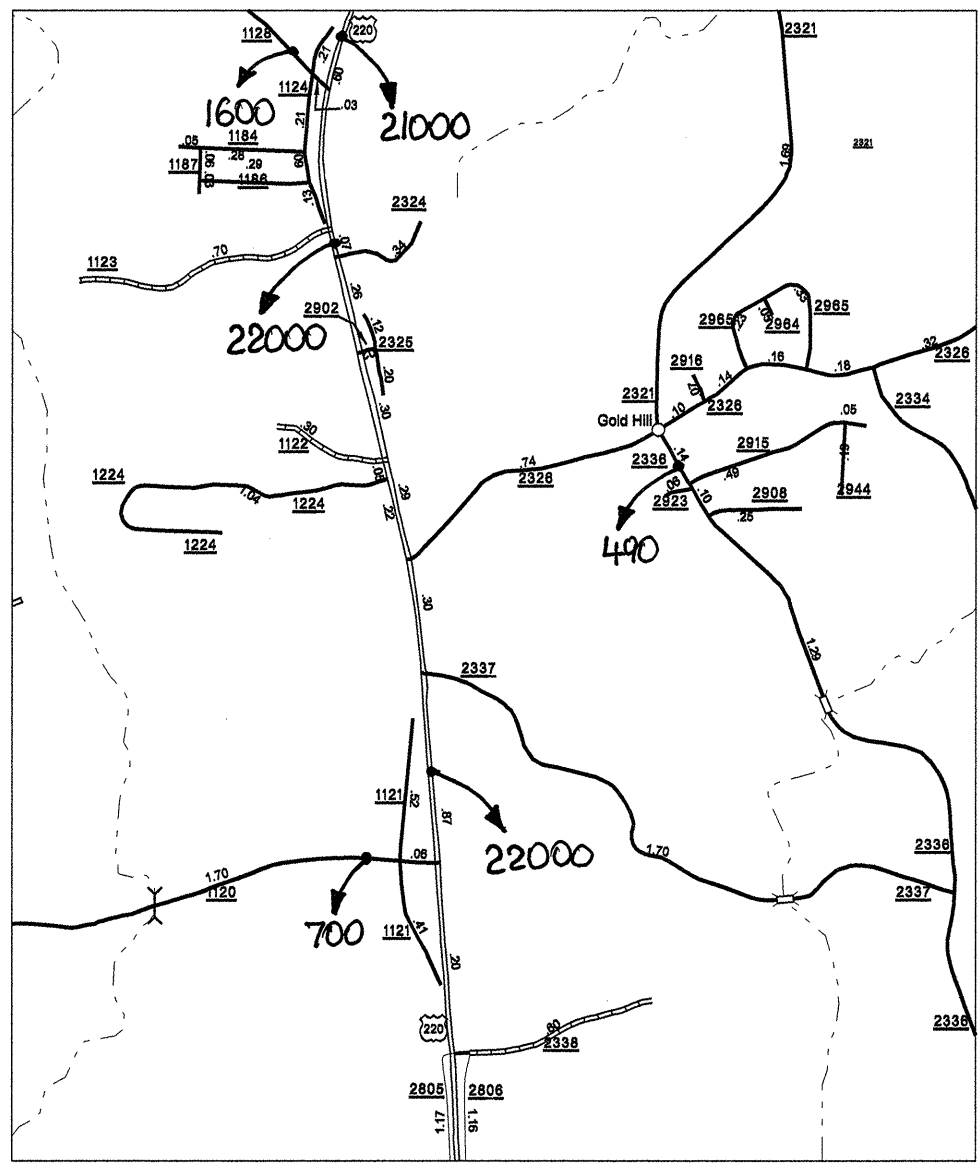
Disclaimer: The IMG Unit's goal is to provide the most accurate information as possible, the magnitude of the data prevents any guarantee of accuracy or completeness. If you find any information that is incorrect, please send your request to the IMG Unit.

ROCKINGHAM
 COPIES OF THIS MAP ARE AVAILABLE TO THE PUBLIC AT A NOMINAL COST.
 N.C. DEPARTMENT OF TRANSPORTATION
 INFORMATION, MAPS, AND DRAWINGS
 DIVISION
 RALEIGH, N.C. 27619

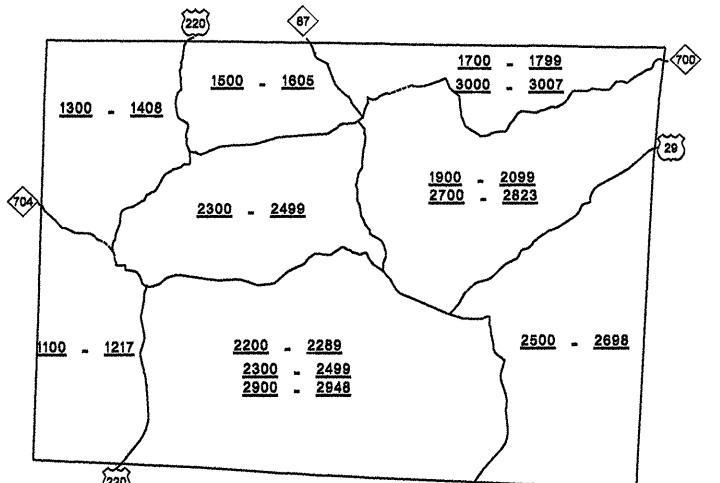
REVISED
 11/20/02 RLN
 10/10/03 RLN
 8/27/03 RLN
 11/17/03 RLN
 8/6/04 MEU
 6/29/04 RLN
 8/16/04 RLN
 8/28/04 RLN
 8/28/04 RLN
 10/18/04 RLN
 11/17/04 RLN
 12/10/04 RLN
 12/10/04 RLN
 12/20/05 TRP



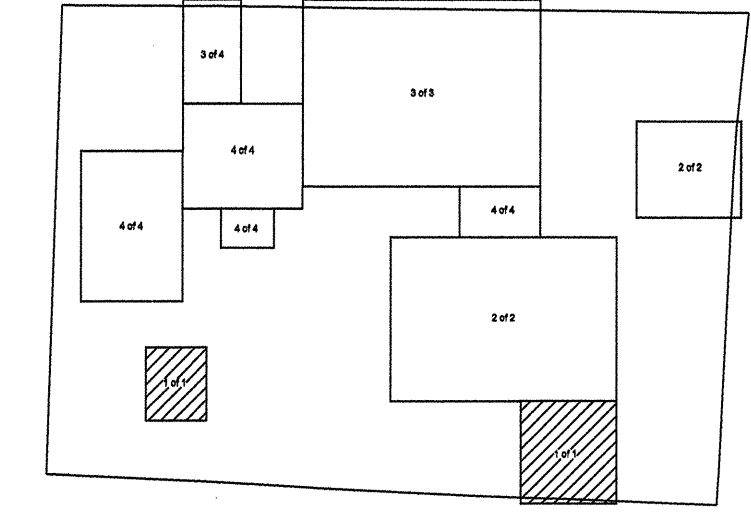
Inset 2



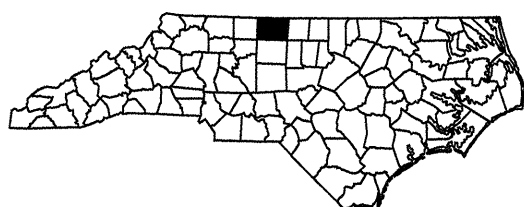
Inset 1



KEY TO COUNTY ROAD NUMBERS
 ALSO NUMBERS 1001 1002



SUPPLEMENTAL KEY



County Boundary alignments are based on information provided by State and Federal agencies, and are shown in their approximate locations.

NOTE: MAP INCLUDES ONLY STATE MAINTAINED ROADS OR IMPORTANT NON-SYSTEM ROADS. ROADS SHOWN AS OF DEC 20, 2006



2007 AADT
 ANNUAL AVERAGE DAILY TRAFFIC
ROCKINGHAM COUNTY
 NORTH CAROLINA
 GENERATED BY THE
TRAFFIC SURVEY GROUP
 TRANSPORTATION PLANNING BRANCH
 PREPARED BY THE
 NORTH CAROLINA DEPARTMENT OF TRANSPORTATION
 INFORMATION TECHNOLOGY - IMG UNIT
 IN COOPERATION WITH THE
 U.S. DEPARTMENT OF TRANSPORTATION
 FEDERAL HIGHWAY ADMINISTRATION

