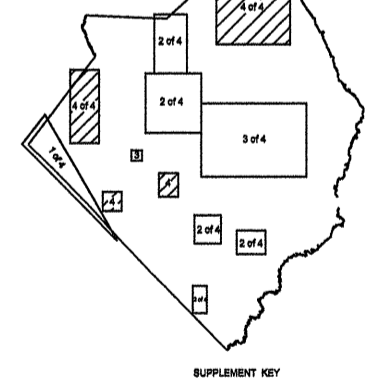
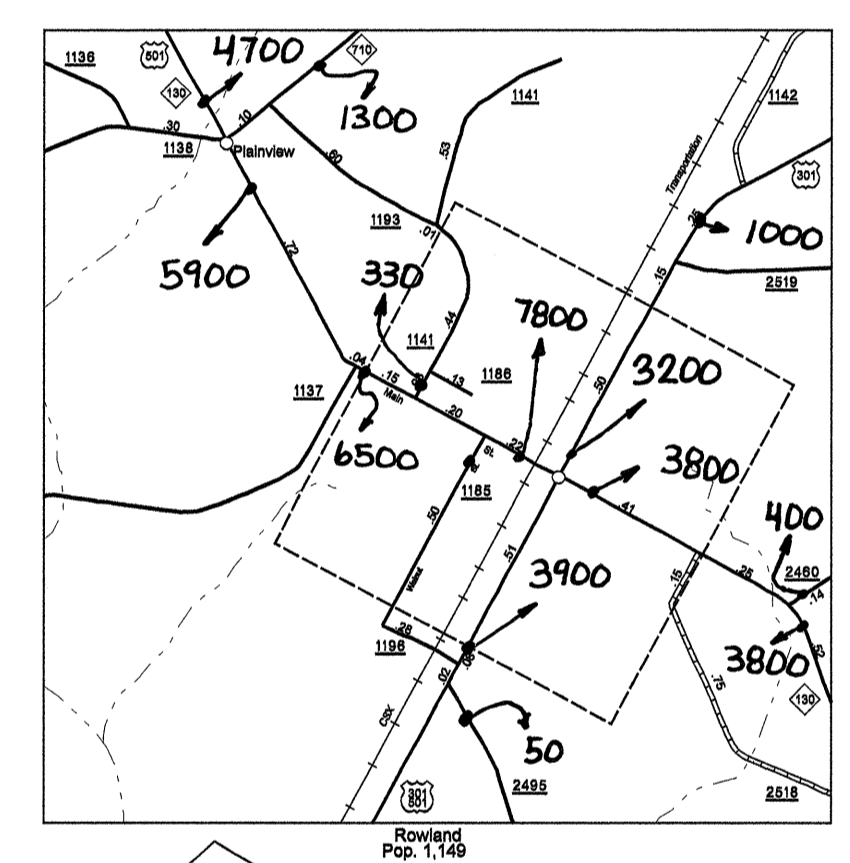
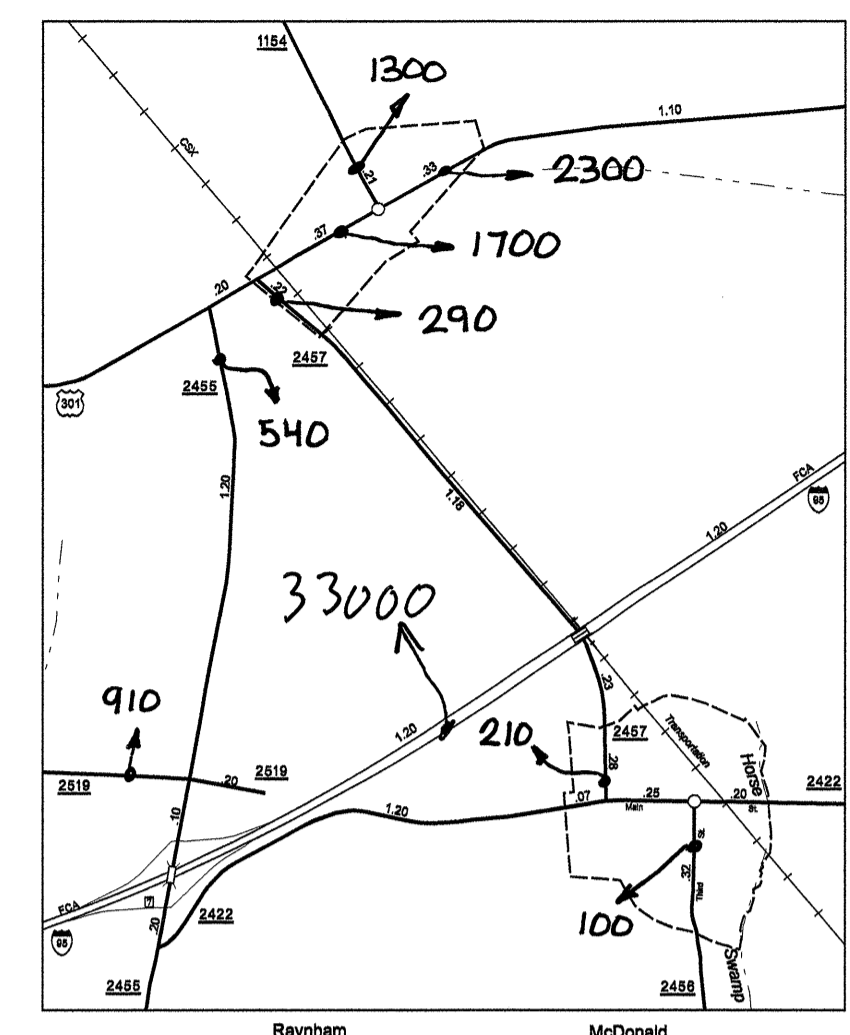
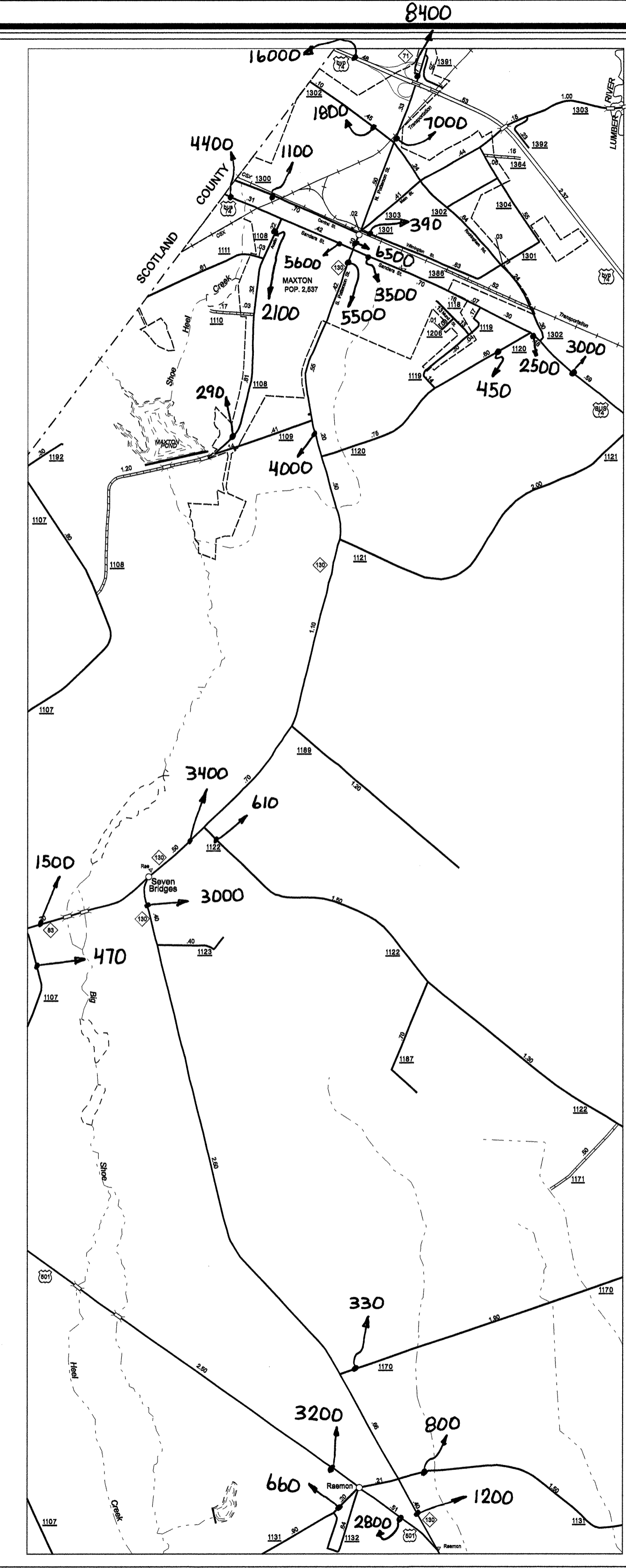
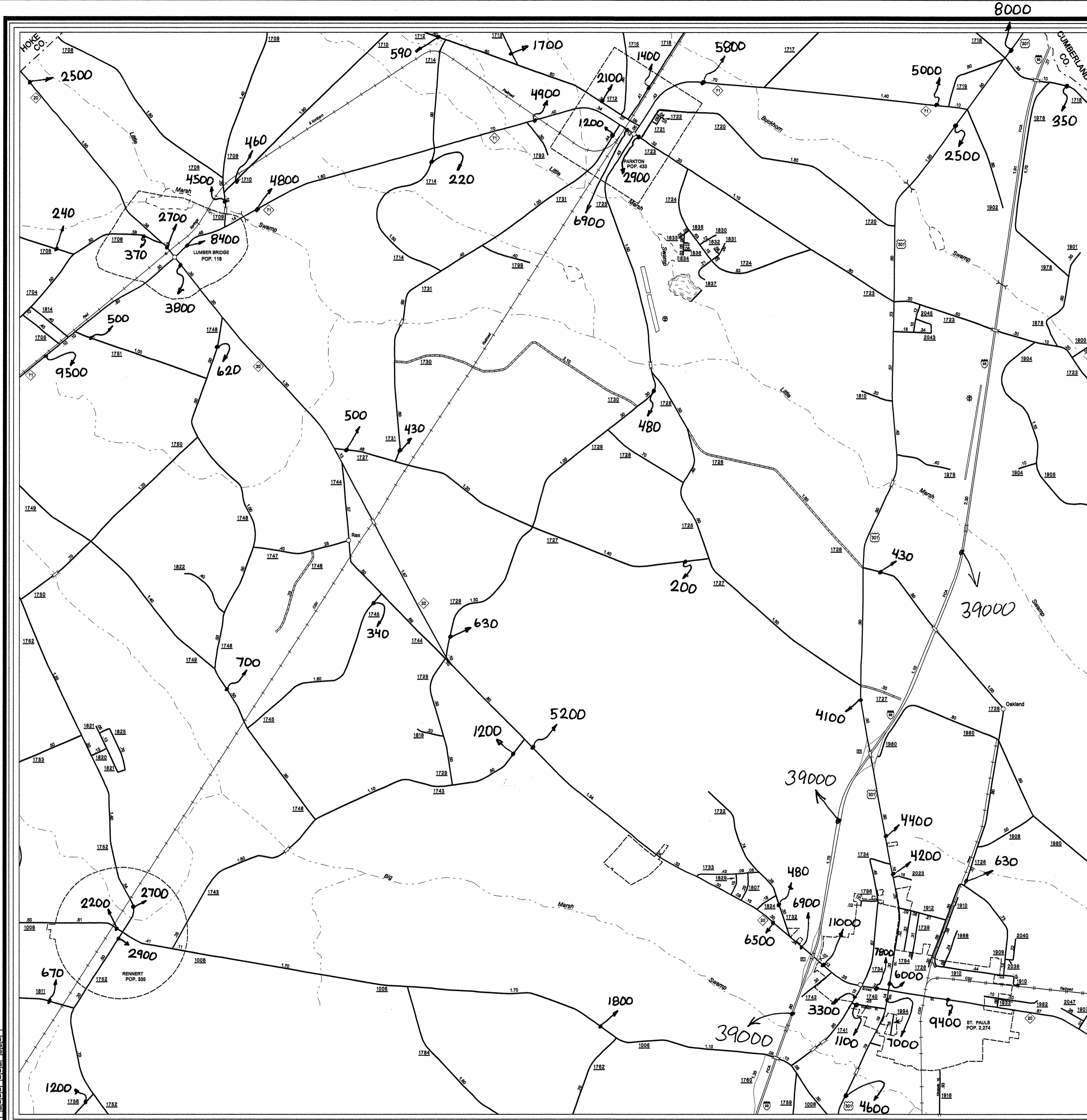


Disclaimer: The GIS Unit's goal is to provide the most accurate information as possible, the magnitude of the data prevents any guarantee of accuracy or completeness. If you find any information that is incorrect, please send your request to the GIS Unit.

COPIES OF THIS MAP ARE AVAILABLE
 FROM THE GIS UNIT AT A FORMAL COST.
 ADDRESS:
 N.C. DEPARTMENT OF TRANSPORTATION
 INFORMATION SERVICES AND OPERATIONS
 1000 EAST 7TH STREET, 11TH FLOOR
 RALEIGH, N.C. 27611

REVISION	DATE	DESCRIPTION
1	12/20/05	RLN
2	4/17/06	MAC
3	8/30/06	MAC
4	8/1/06	JMS
5	10/28/06	JMS
6	11/17/06	JMS
7	12/15/06	JMS
8	2/20/07	JMS
9	2/20/07	JMS
10	5/11/07	JMS
11	7/20/07	JMS
12	10/29/07	JMS



ENLARGED MUNICIPAL AND SUBURBAN AREAS
2007 AADT
 ANNUAL AVERAGE DAILY TRAFFIC
ROBESON COUNTY
 NORTH CAROLINA
 GENERATED BY THE
TRAFFIC SURVEY GROUP
 TRANSPORTATION PLANNING BRANCH
 PREPARED BY THE
 NORTH CAROLINA DEPARTMENT OF TRANSPORTATION
 INFORMATION TECHNOLOGY - IMG UNIT
 IN COOPERATION WITH THE
 U.S. DEPARTMENT OF TRANSPORTATION
 FEDERAL HIGHWAY ADMINISTRATION
 SCALE
 1 MILE

229