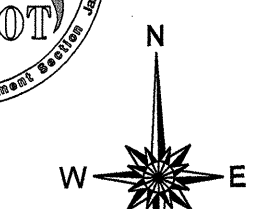
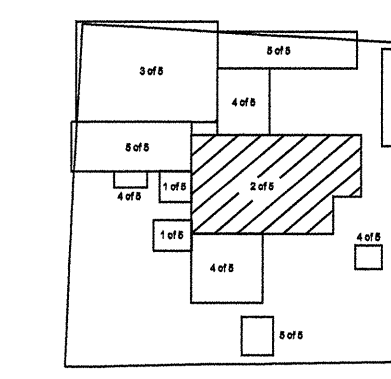


Disclaimer: The IMU Unit's goal is to provide the most accurate information as possible, the magnitude of the data prevents any guarantee of accuracy or completeness. If you find any information that is incorrect, please send your request to the IMU Unit.

COPIES OF THIS MAP ARE AVAILABLE AT A FORMAL COST.  
N.C. DEPARTMENT OF TRANSPORTATION  
INFORMATION TECHNOLOGY AND OPERATIONS  
RALEIGH, N.C. 27603

REVISED  
201005 JCH  
120901 JCH  
120502 JCH  
121703 JCH  
111704 JCH  
120605 JCH  
120206 TRP



ENLARGED MUNICIPAL AND SUBURBAN AREAS  
**2007 AADT**  
ANNUAL AVERAGE DAILY TRAFFIC  
**RANDOLPH COUNTY**  
NORTH CAROLINA  
ORIGINATED BY THE  
**TRAFFIC SURVEY GROUP**  
TRANSPORTATION PLANNING BRANCH  
PREPARED BY THE  
NORTH CAROLINA DEPARTMENT OF TRANSPORTATION  
INFORMATION TECHNOLOGY - IMU UNIT  
IN COOPERATION WITH THE  
U.S. DEPARTMENT OF TRANSPORTATION  
FEDERAL HIGHWAY ADMINISTRATION

219

