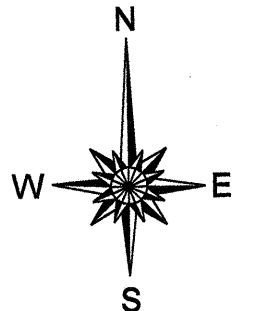
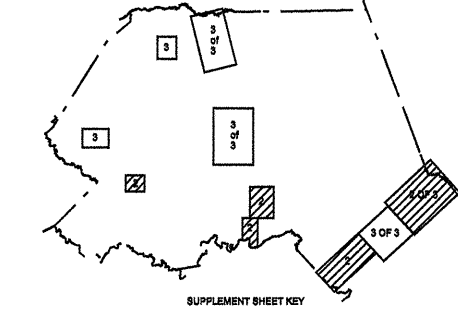
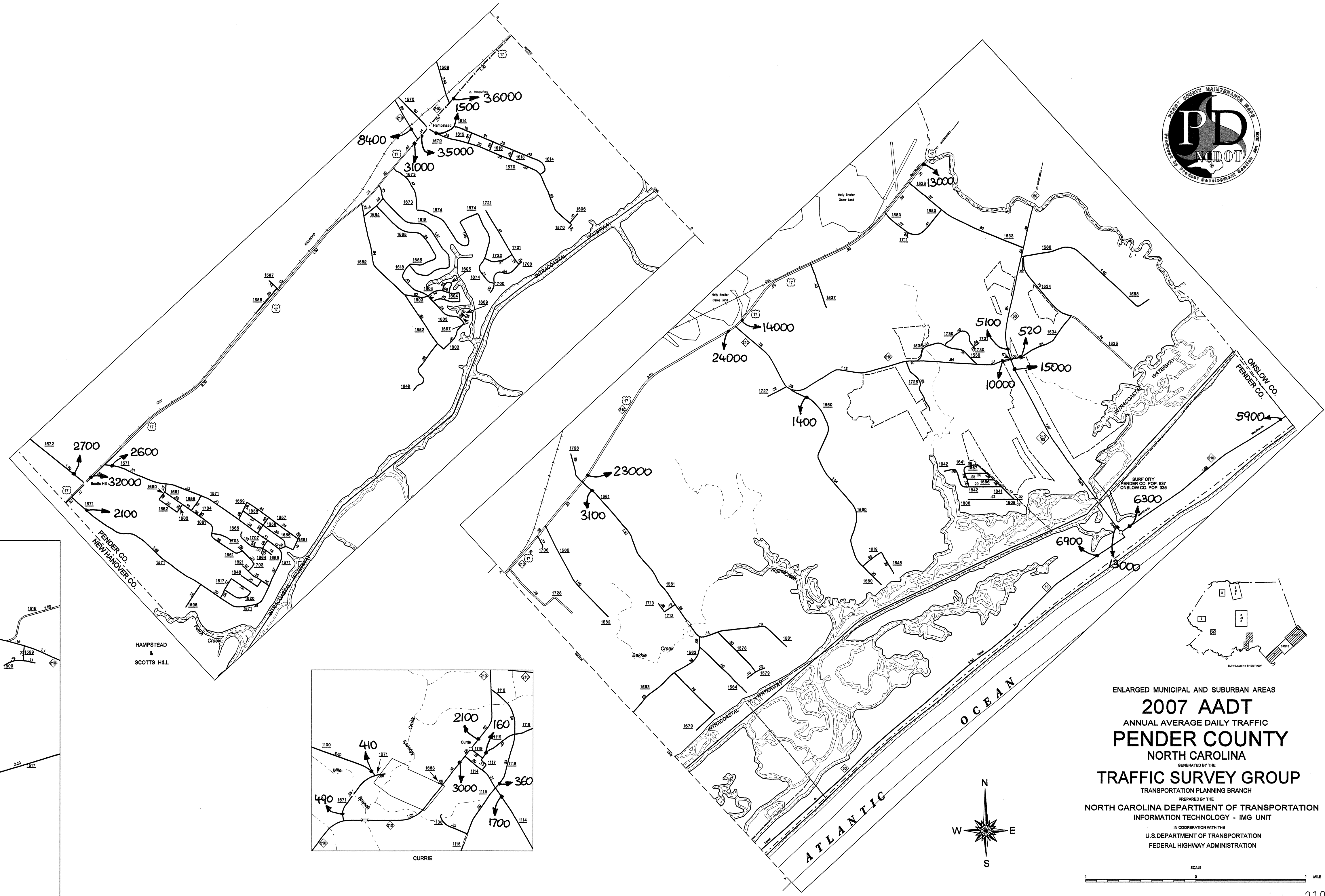
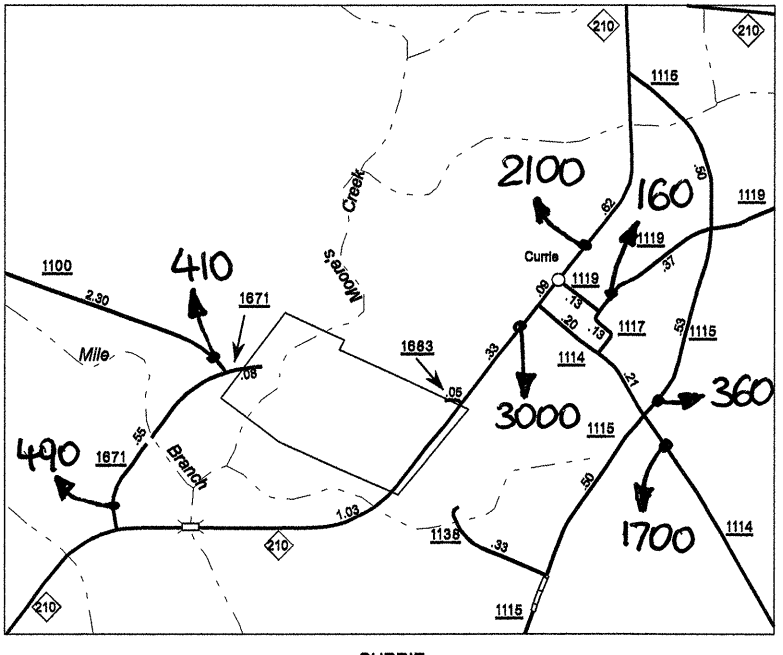
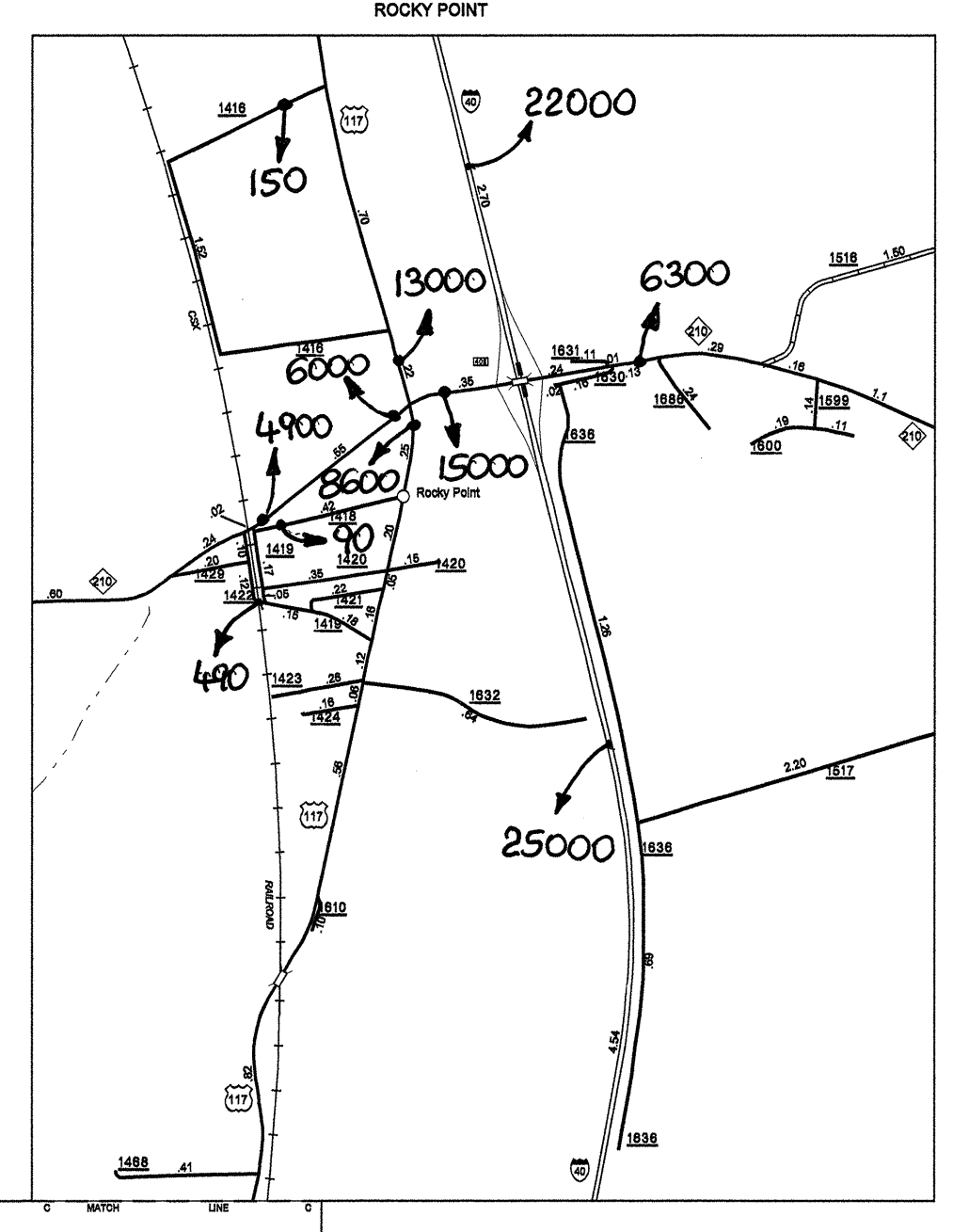
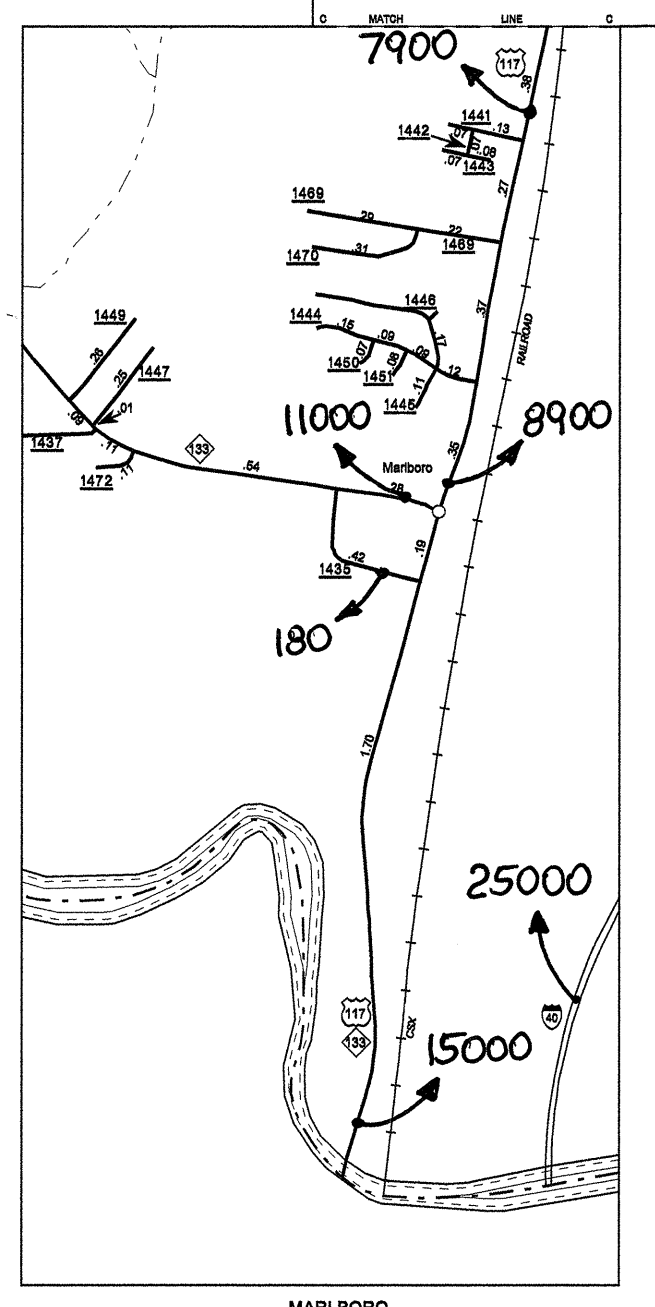
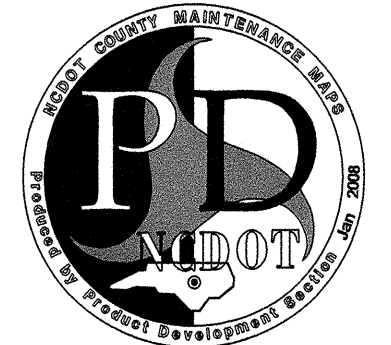
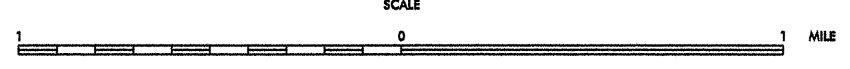


Disclaimer: The IMG Unit's goal is to provide the most accurate information as possible, the magnitude of the data presented any guarantee of accuracy or completeness. If you find any information that is incorrect, please send your request to the IMG Unit.



ENLARGED MUNICIPAL AND SUBURBAN AREAS
2007 AADT
 ANNUAL AVERAGE DAILY TRAFFIC
PENDER COUNTY
 NORTH CAROLINA
 GENERATED BY THE
TRAFFIC SURVEY GROUP
 TRANSPORTATION PLANNING BRANCH
 PREPARED BY THE
 NORTH CAROLINA DEPARTMENT OF TRANSPORTATION
 INFORMATION TECHNOLOGY - IMG UNIT
 IN COOPERATION WITH THE
 U.S. DEPARTMENT OF TRANSPORTATION
 FEDERAL HIGHWAY ADMINISTRATION



15,000 FOOT GRID BASED ON NORTH CAROLINA PLANE COORDINATE SYSTEM
 POLYCON PROJECTION

REVISIONS

3/10/02	MEM
7/20/02	MEM
8/10/02	MEM
8/6/03	PLN
8/19/04	BCH
7/19/04	BCH
12/05/05	BCH
2/19/06	BCH
10/05/06	BCH
8/19/06	BCH
11/19/06	BCH
4/1/08	BCH
11/19/08	BCH
2/27/07	BCH
4/30/07	BCH
7/20/07	BCH