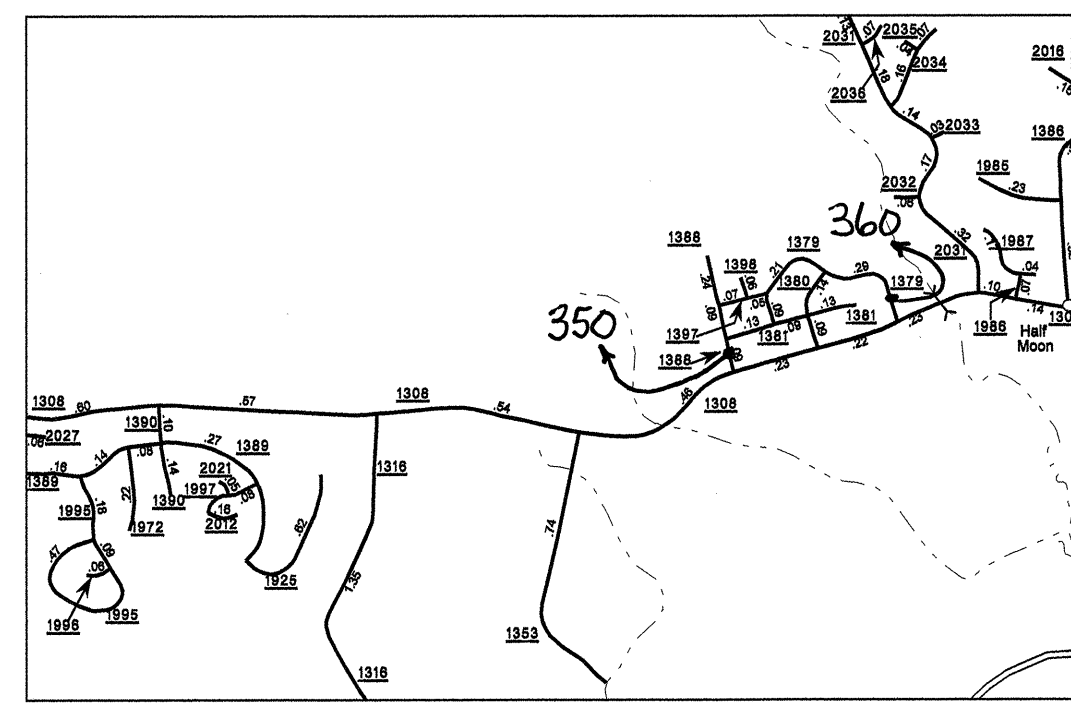
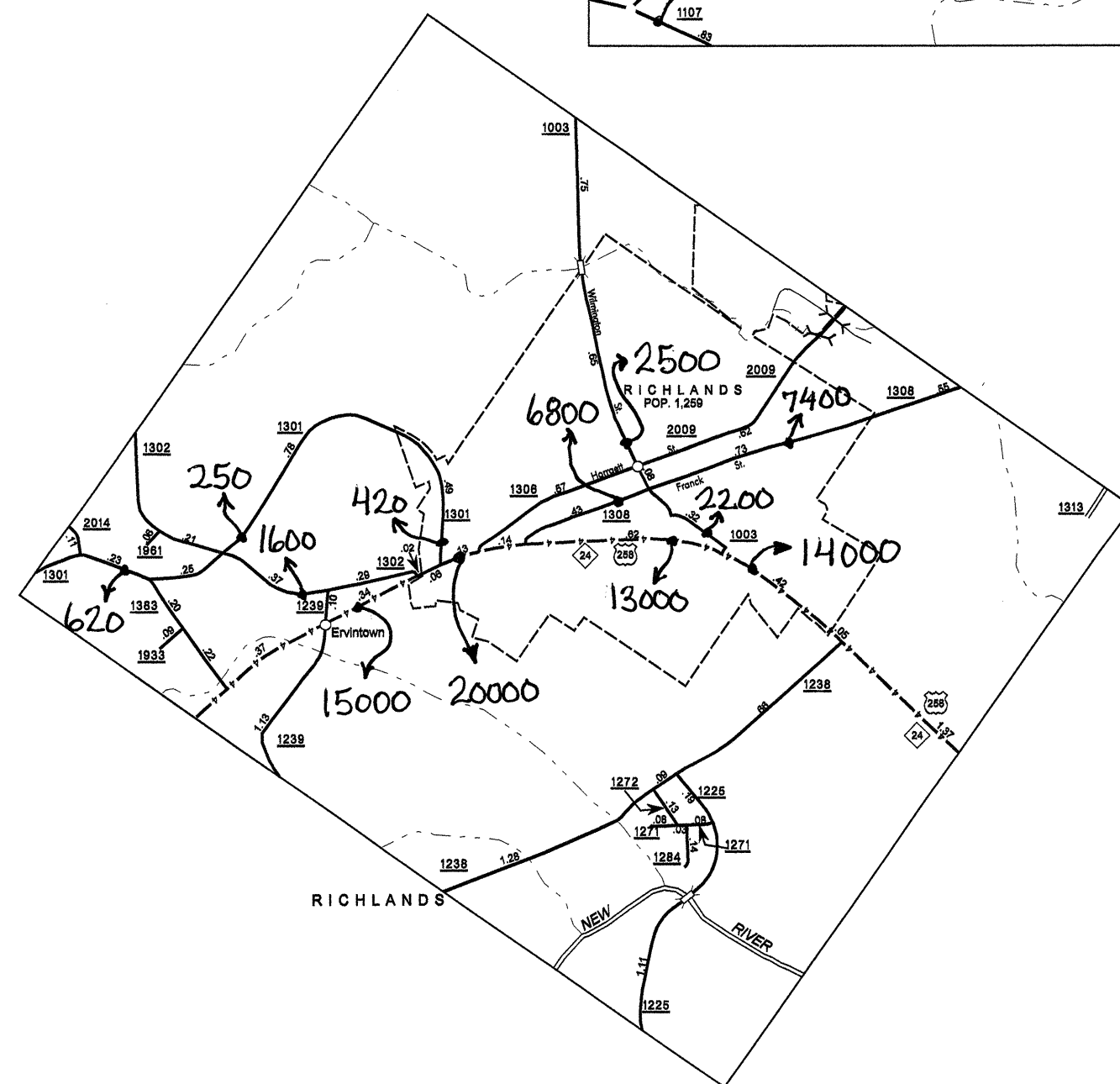
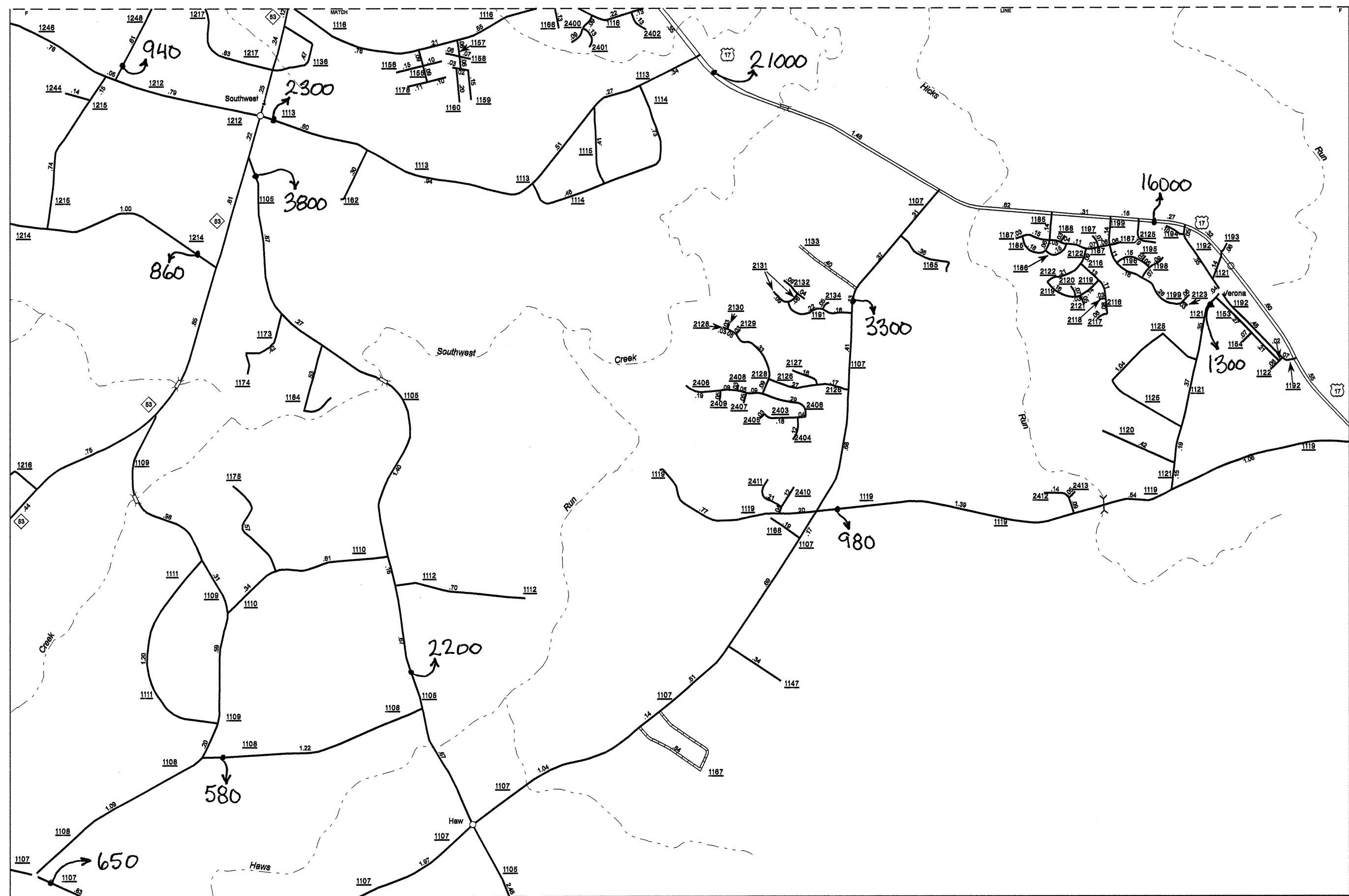
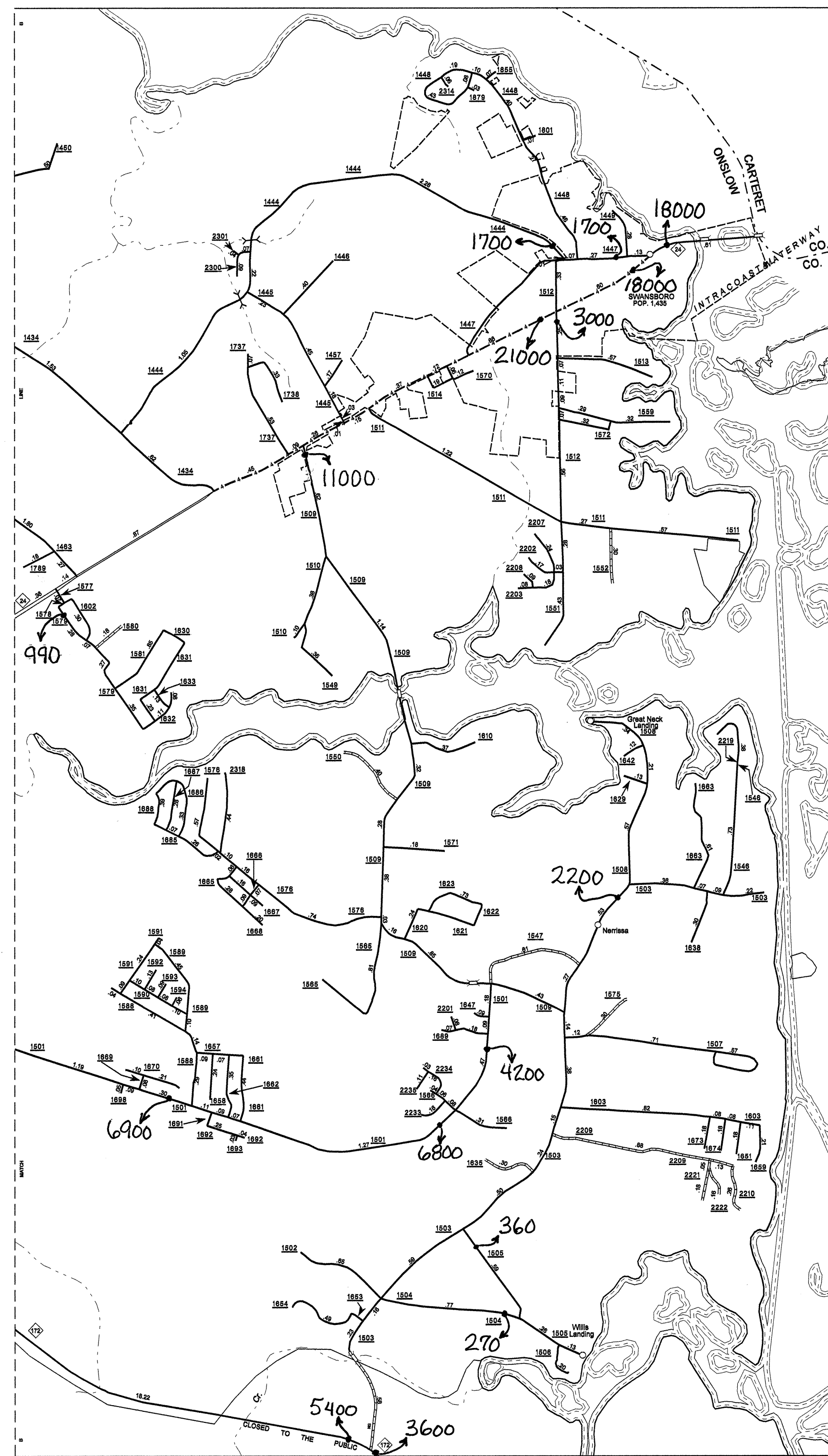


Disclaimer: The IMG Unit's goal is to provide the most accurate information as possible, the magnitude of the data prevents any guarantee of accuracy or completeness. If you find any information that is incorrect, please send your request to the IMG Unit.

COPIES OF THIS MAP ARE AVAILABLE
 FROM THE STATE ARCHIVES
 N.C. DEPARTMENT OF TRANSPORTATION
 INFORMATION SERVICES AND SERVICES
 DIVISION
 100 EAST 10TH STREET
 RALEIGH, N.C. 27601

REVISED
 3/8/02 MEM
 7/8/02 MEM
 7/31/02 MEM
 8/30/03 N.L.
 8/19/04 B.C.H.
 7/14/04 B.C.H.
 1/28/05 B.C.H.
 10/31/05 B.C.H.
 2/1/06 B.C.H.
 11/20/06 B.C.H.
 2/28/07 B.C.H.
 4/23/07 B.C.H.
 8/11/07 B.C.H.
 8/8/07 B.C.H.
 12/20/07 B.C.H.



ENLARGED MUNICIPAL AND SUBURBAN AREAS
2007 AADT
 ANNUAL AVERAGE DAILY TRAFFIC
ONSLON COUNTY
 NORTH CAROLINA
 GENERATED BY THE
TRAFFIC SURVEY GROUP
 TRANSPORTATION PLANNING BRANCH
 PREPARED BY THE
 NORTH CAROLINA DEPARTMENT OF TRANSPORTATION
 INFORMATION TECHNOLOGY - IMG UNIT
 IN COOPERATION WITH THE
 U.S. DEPARTMENT OF TRANSPORTATION
 FEDERAL HIGHWAY ADMINISTRATION

10,000 FOOT GRID BASED ON NORTH CAROLINA PLANE COORDINATE SYSTEM
 POLYCONIC PROJECTION

1 MILE
 202
 SHEET 4 OF 8