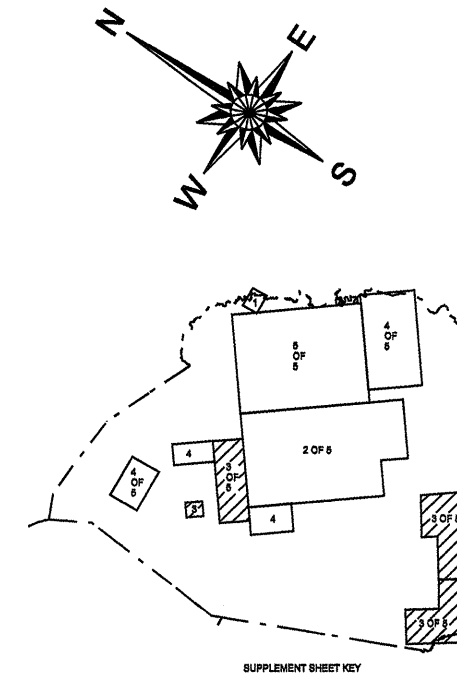
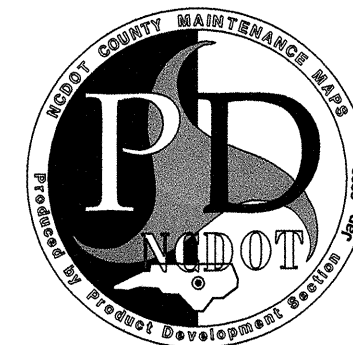
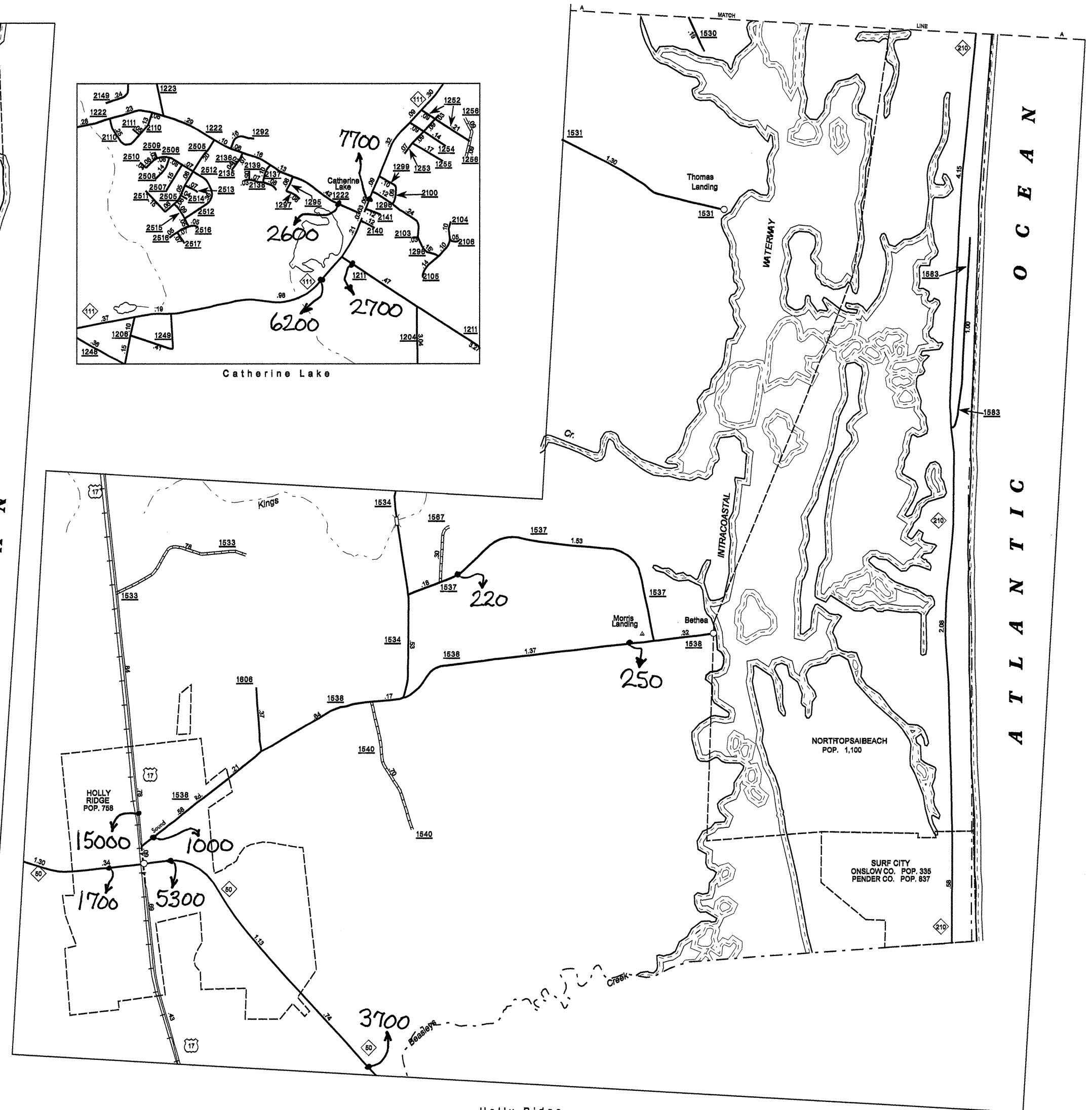
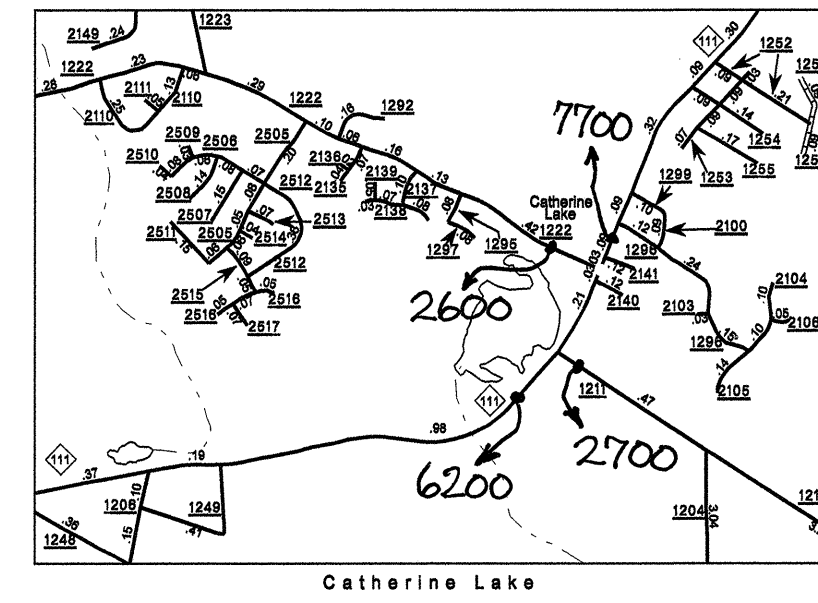
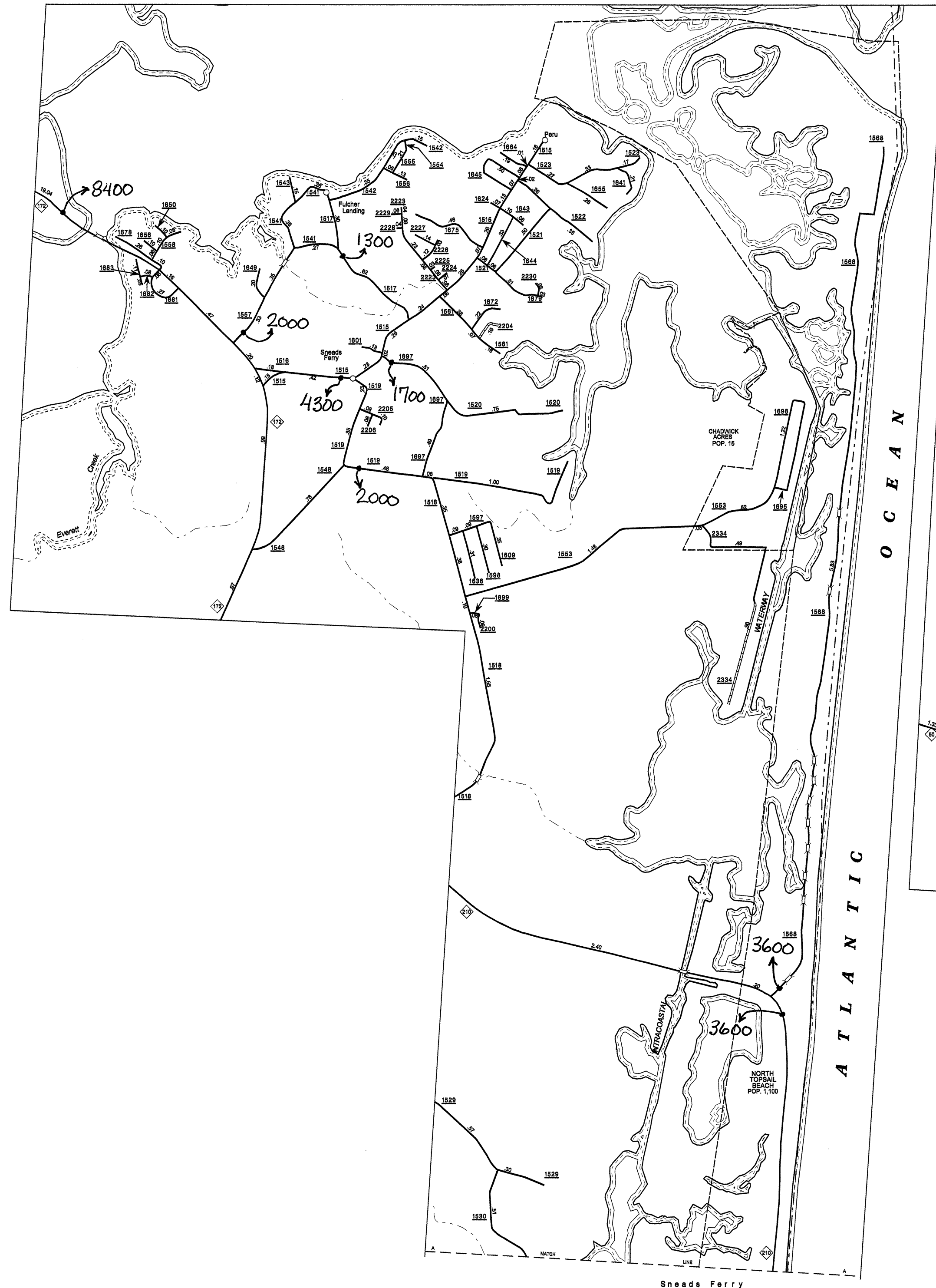
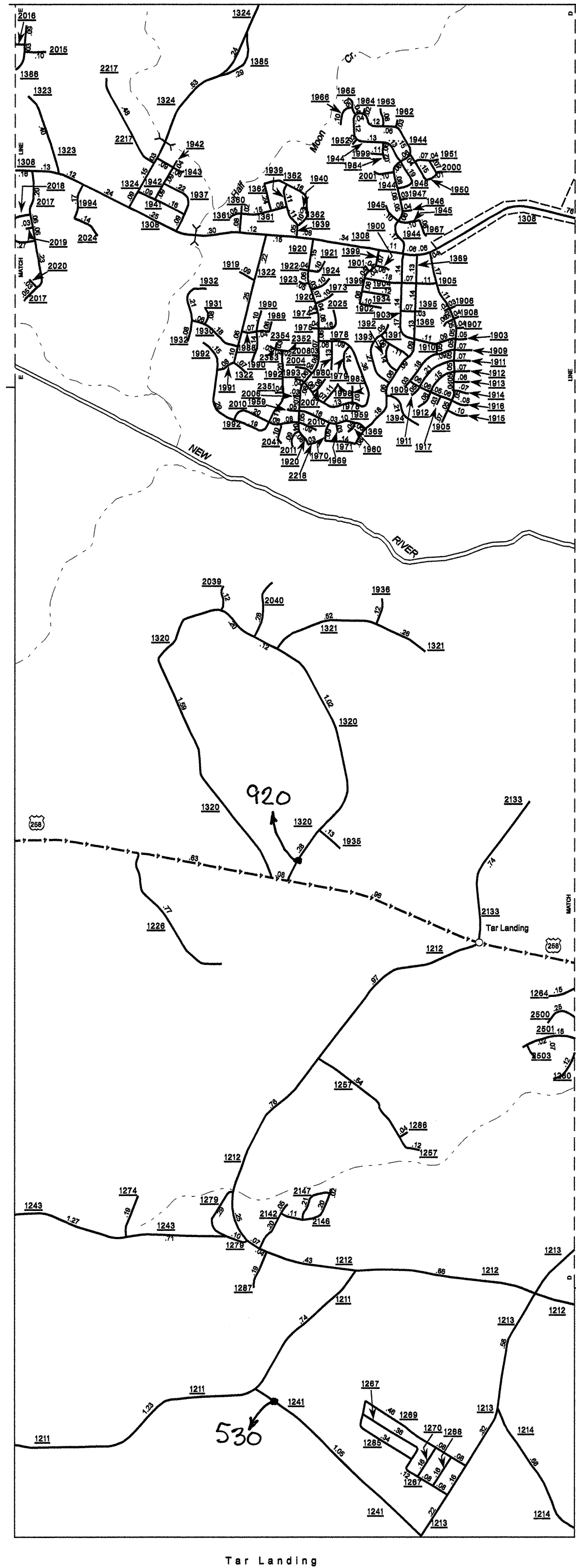


Disclaimer: The M&S Unit's goal is to provide the most accurate information as possible, the magnitude of the data prevents any guarantee of accuracy or completeness. If you find any information that is incorrect, please send your request to the IMG Unit.

COPIES OF THIS MAP ARE AVAILABLE
 FROM THE OFFICE OF AVERAGE COSTS
 ADDRESS:
 N.C. DEPARTMENT OF TRANSPORTATION
 INFORMATION, MAPPING, AND SERVICES
 4001 SANDHURST DRIVE, SUITE 401
 RALEIGH, N.C. 27609

REVISED
 3/8/02 THEM
 7/8/02 THEM
 7/3/02 THEM
 8/3/03 PLAN
 8/19/04 BCH
 7/14/04 BCH
 1/24/05 BCH
 10/31/05 BCH
 2/1/06 BCH
 11/20/06 BCH
 2/28/07 BCH
 4/20/07 BCH
 8/11/07 BCH
 8/8/07 BCH
 12/28/07 BCH



ENLARGED MUNICIPAL AND SUBURBAN AREAS
2007 AADT
 ANNUAL AVERAGE DAILY TRAFFIC
ONSLOW COUNTY
 NORTH CAROLINA
 GENERATED BY THE
TRAFFIC SURVEY GROUP
 TRANSPORTATION PLANNING BRANCH
 PREPARED BY THE
 NORTH CAROLINA DEPARTMENT OF TRANSPORTATION
 INFORMATION TECHNOLOGY - IMG UNIT
 IN COOPERATION WITH THE
 U.S. DEPARTMENT OF TRANSPORTATION
 FEDERAL HIGHWAY ADMINISTRATION

