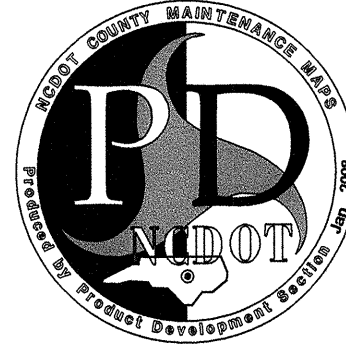
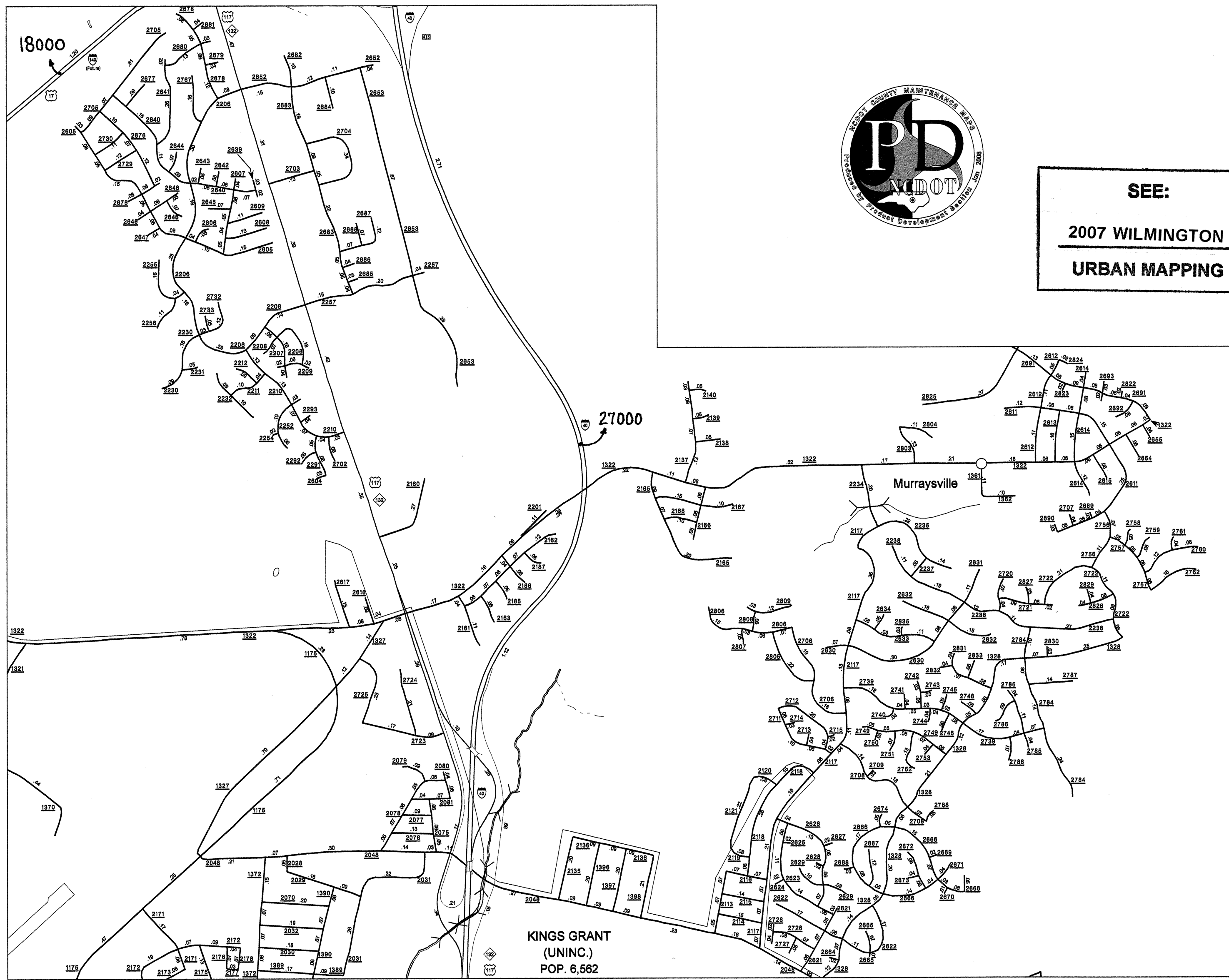
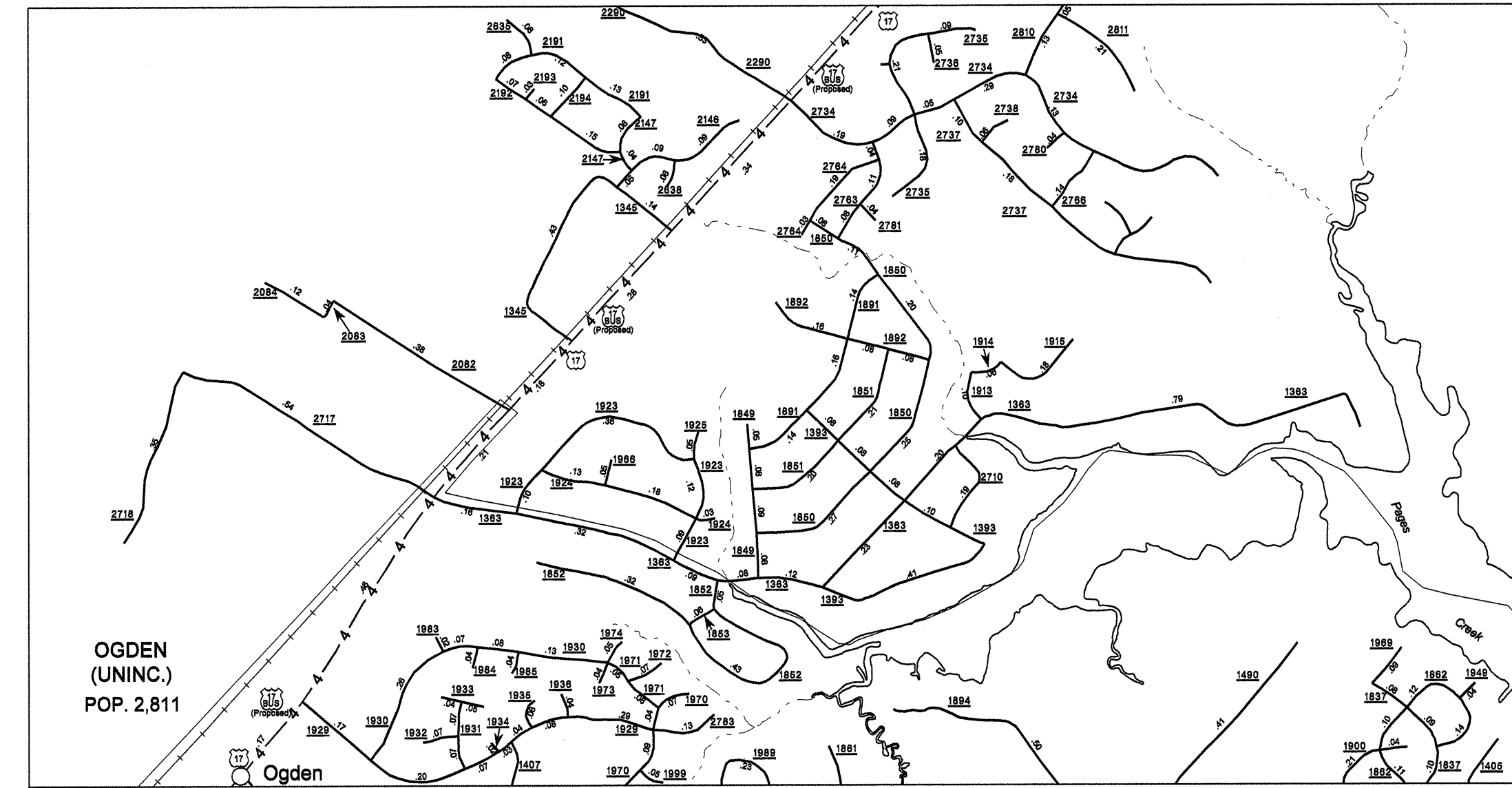
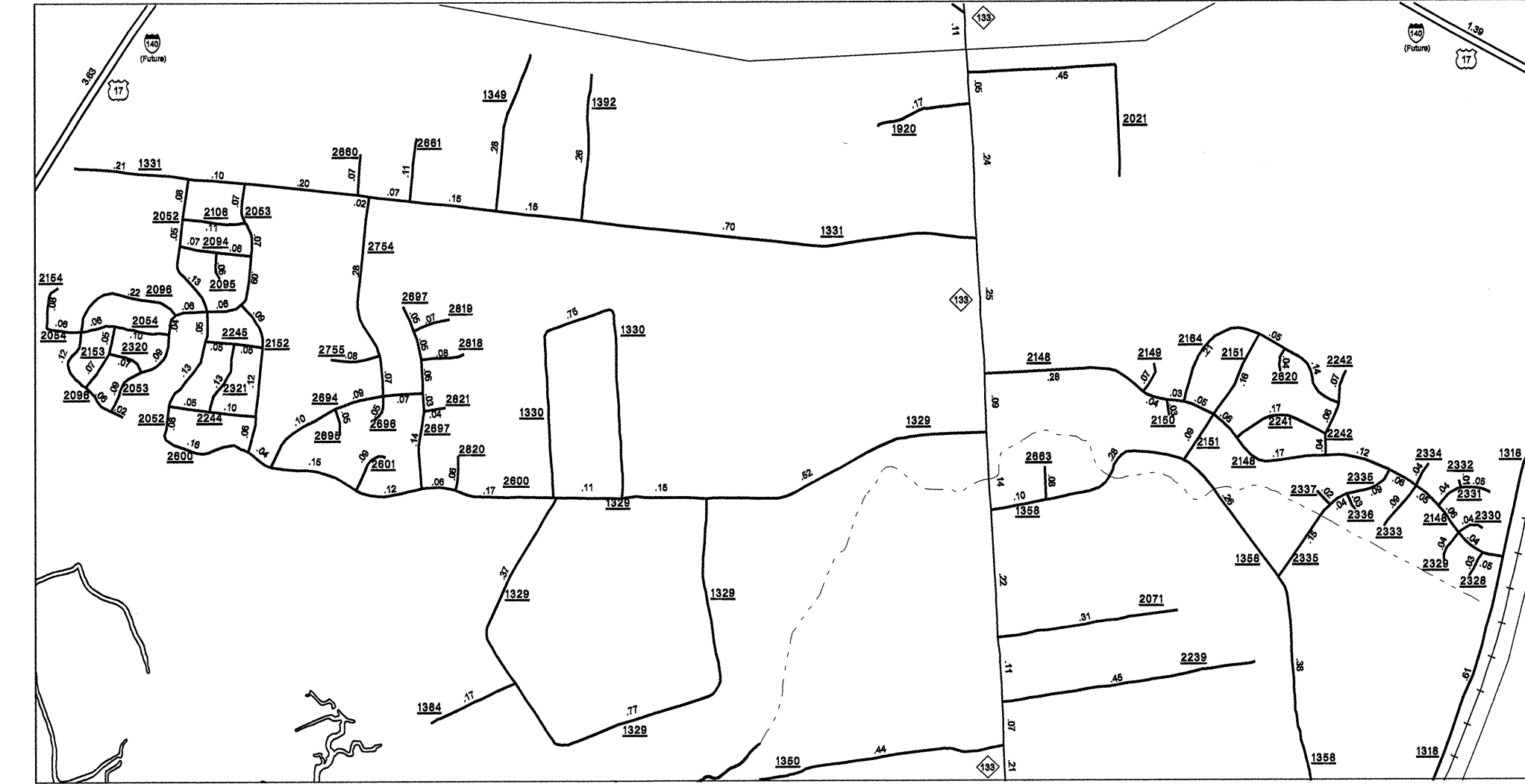


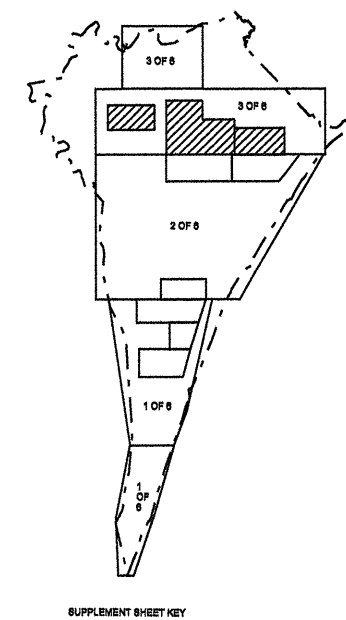
Disclaimer: The IMG Unit's goal is to provide the most accurate information as possible, the magnitude of the data prevents any guarantee of accuracy or completeness. If you find any information that is incorrect, please send your request to the IMG Unit.



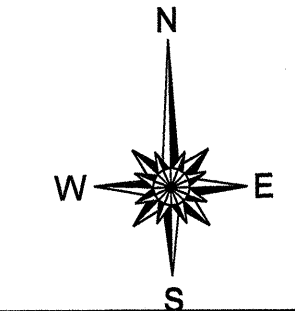
SEE:
2007 WILMINGTON
URBAN MAPPING



COPIES OF THIS MAP ARE AVAILABLE AT THE FOLLOWING ADDRESSES:
N.C. DEPARTMENT OF TRANSPORTATION
INFORMATION, MAPPING, AND GIS SERVICES
RALEIGH, N.C. 27611



ENLARGED MUNICIPAL AND SUBURBAN AREAS
2007 AADT
ANNUAL AVERAGE DAILY TRAFFIC
NEW HANOVER COUNTY
NORTH CAROLINA
GENERATED BY THE
TRAFFIC SURVEY GROUP
TRANSPORTATION PLANNING BRANCH
PREPARED BY THE
NORTH CAROLINA DEPARTMENT OF TRANSPORTATION
INFORMATION TECHNOLOGY - IMG UNIT
IN COOPERATION WITH THE
U.S. DEPARTMENT OF TRANSPORTATION
FEDERAL HIGHWAY ADMINISTRATION



SCALE 0.5 MILE
1" = 0.5 MILE