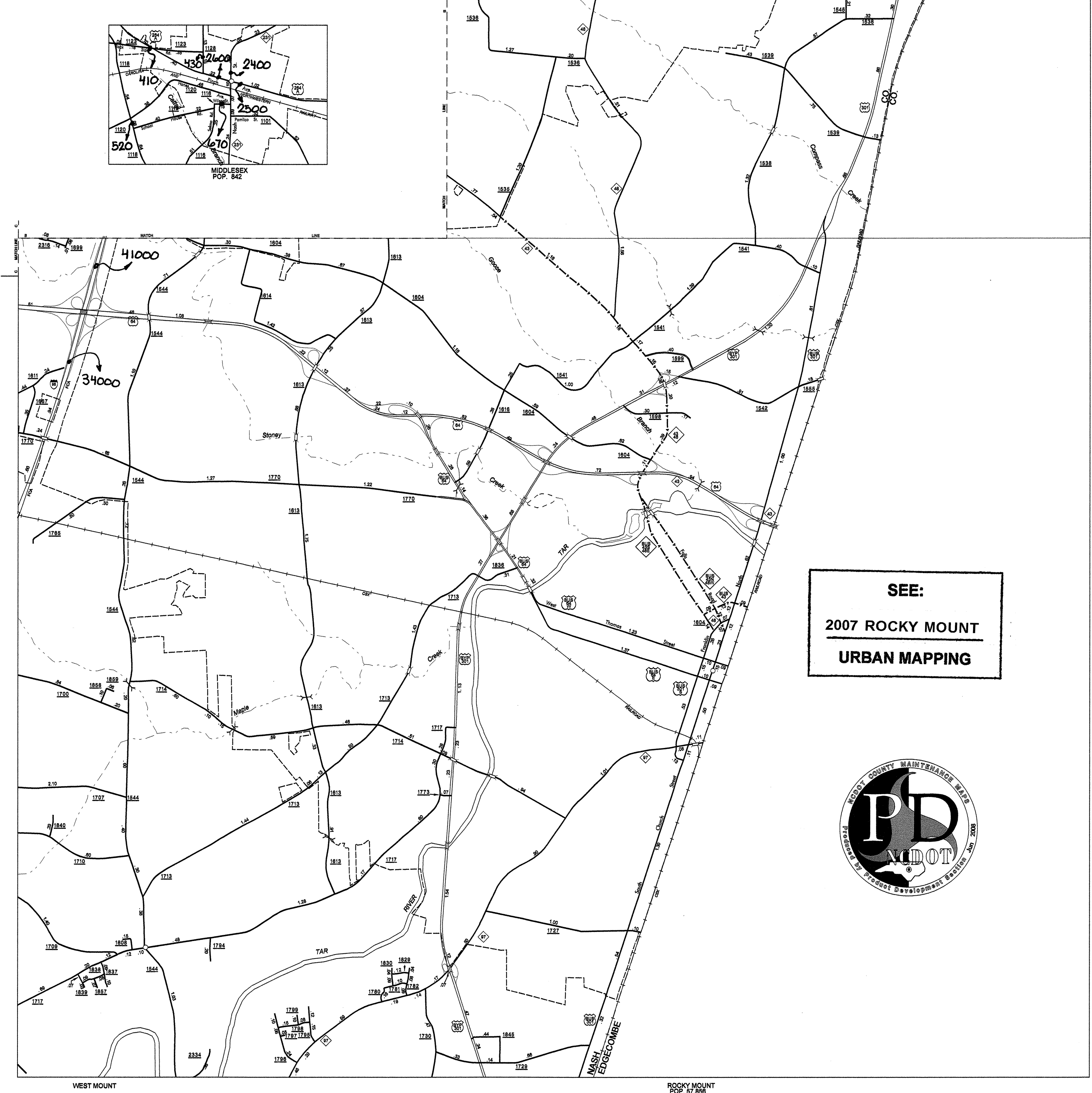
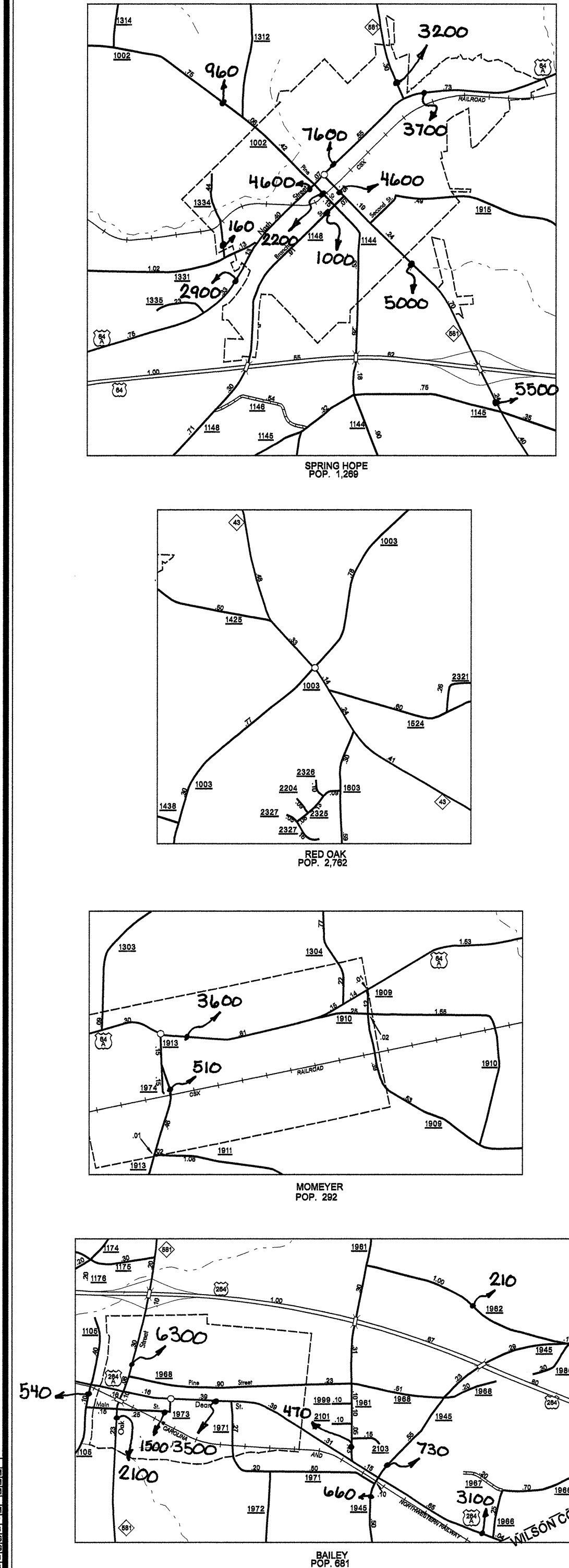


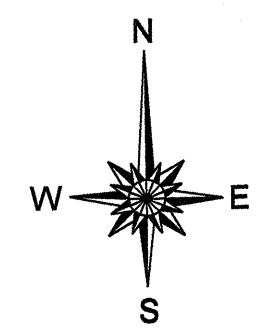
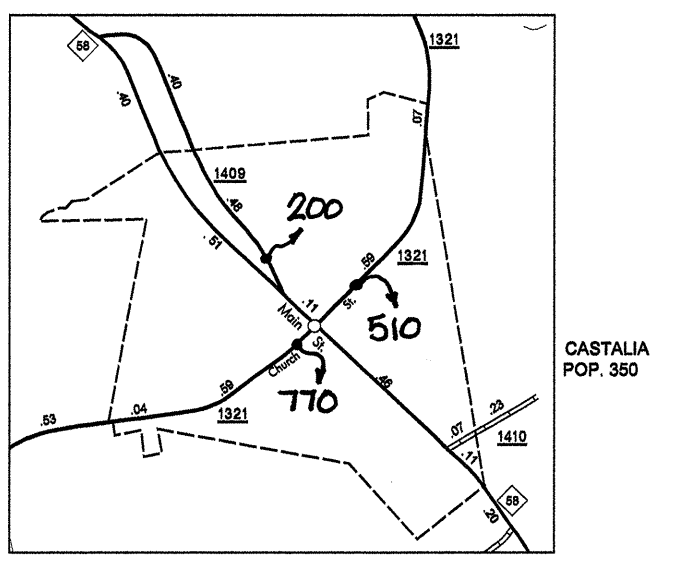
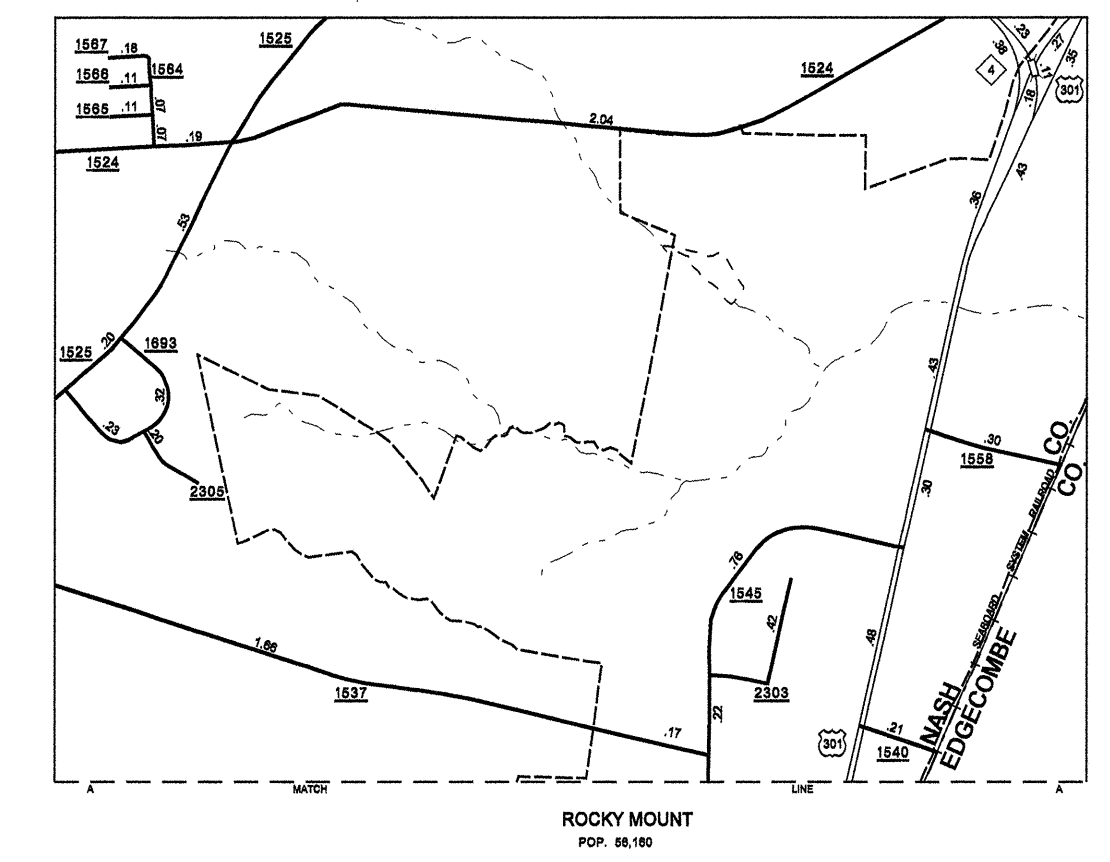
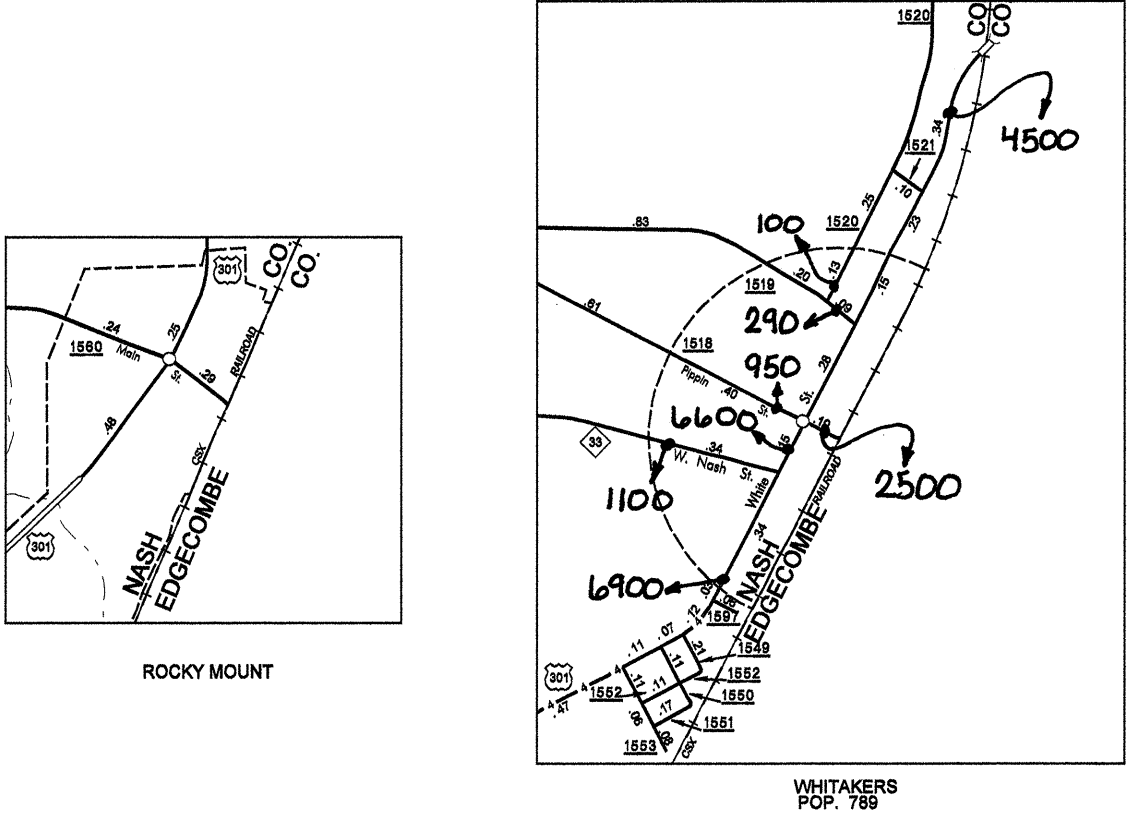
Disclaimer: The IMG Unit's goal is to provide the most accurate information as possible, the magnitude of the data prevents any guarantee of accuracy or completeness. If you find any information that is incorrect, please send your request to the IMG Unit.

COPIES OF THIS MAP ARE AVAILABLE
 FROM THE STATE ARCHIVES
 N.C. DEPARTMENT OF TRANSPORTATION
 STATE ARCHIVES
 3000 SANDHURST DRIVE, SUITE 100
 RALEIGH, N.C. 27609

REVISED
 10/2001 MEM
 12/2002 MEM
 11/2002 MEM
 2/2003 MEM
 3/2003 MEM
 10/2003 TRP
 8/2004 BDD
 10/2004 BDD
 11/2004 BDD
 7/13/07 BDD
 7/23/07 BDD
 1/23/08 BDD
 2/12/08 BDD
 3/26/08 BDD



**SEE:
 2007 ROCKY MOUNT
 URBAN MAPPING**



ENLARGED MUNICIPAL AND SUBURBAN AREAS
2007 AADT
 ANNUAL AVERAGE DAILY TRAFFIC
NASH COUNTY
 NORTH CAROLINA
GENERATED BY THE
TRAFFIC SURVEY GROUP
TRANSPORTATION PLANNING BRANCH
PREPARED BY THE
NORTH CAROLINA DEPARTMENT OF TRANSPORTATION
INFORMATION TECHNOLOGY - IMG UNIT
IN COOPERATION WITH THE
U.S. DEPARTMENT OF TRANSPORTATION
FEDERAL HIGHWAY ADMINISTRATION
 SCALE

15,000 FOOT GRID BASED ON NORTH CAROLINA PLANE COORDINATE SYSTEM
POLYCONIC PROJECTION