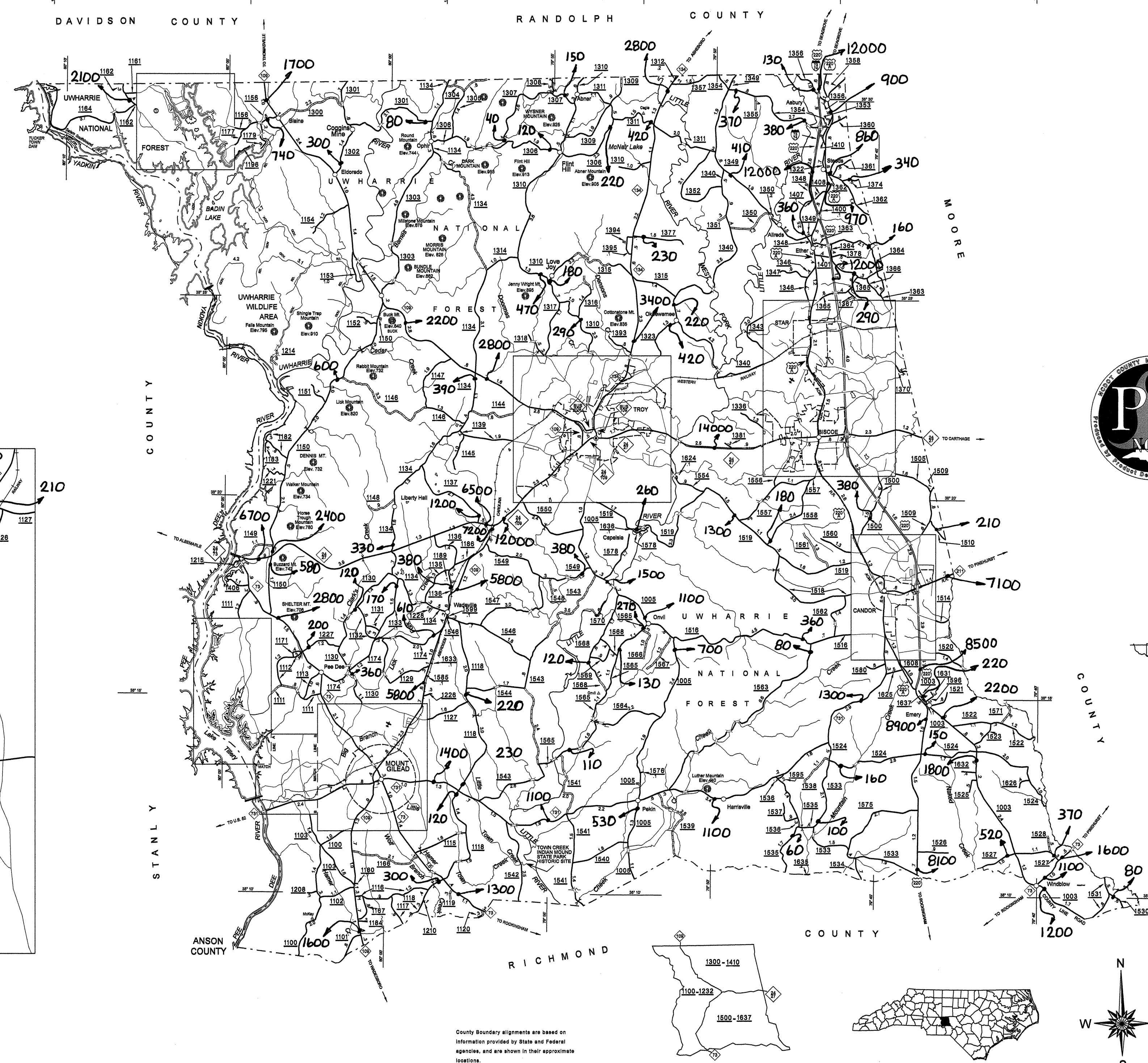
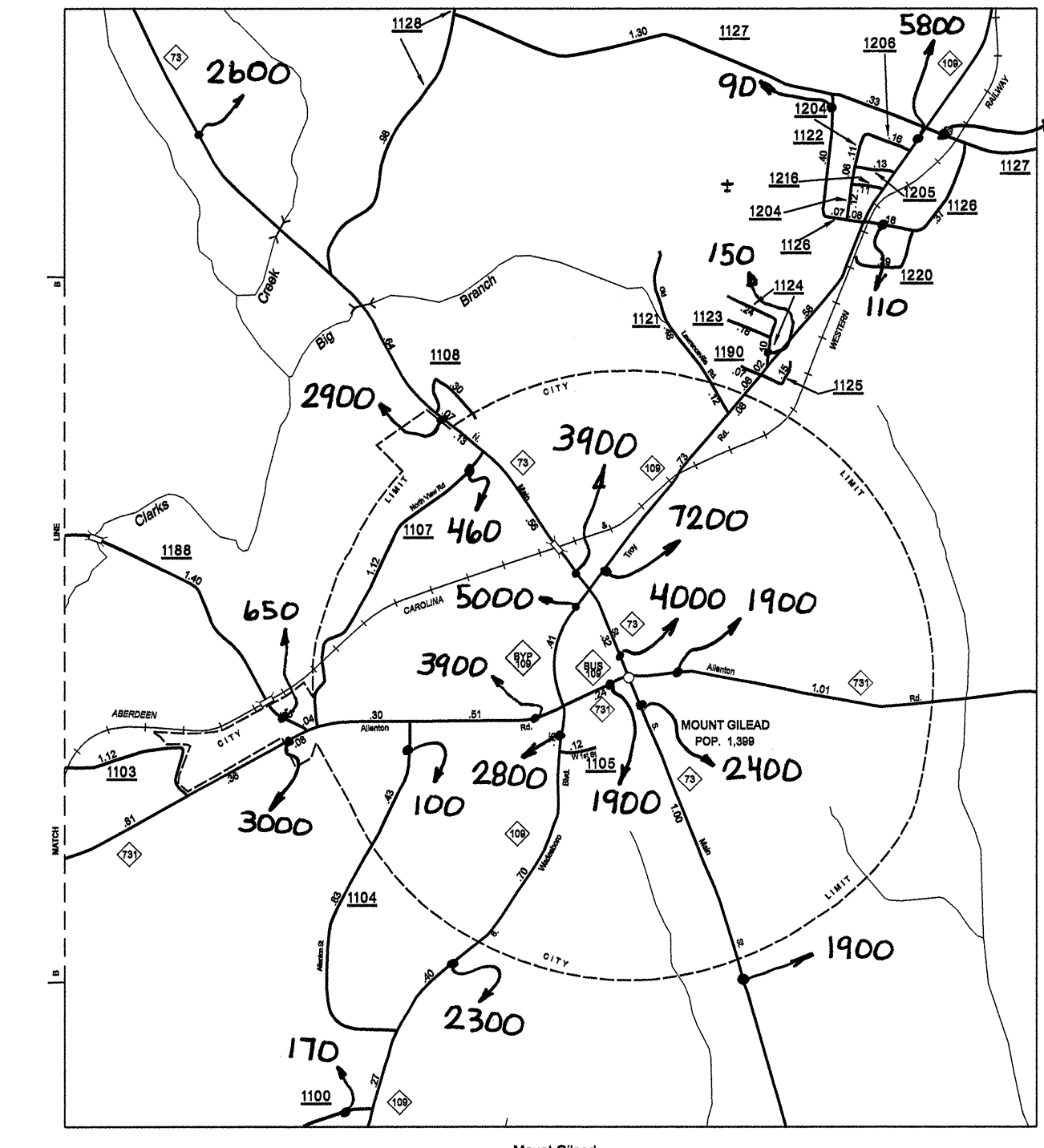
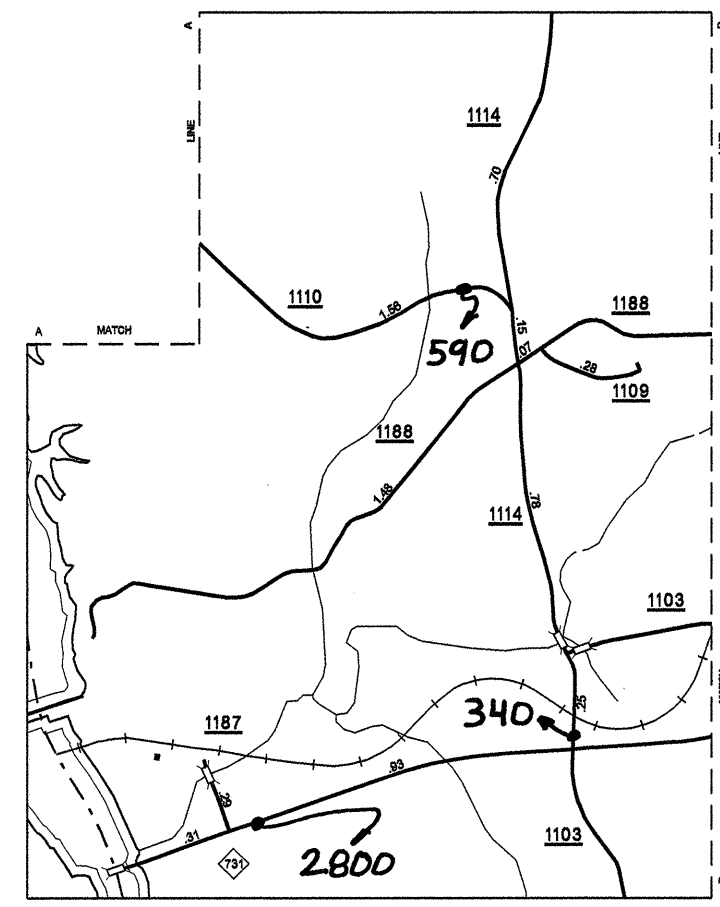
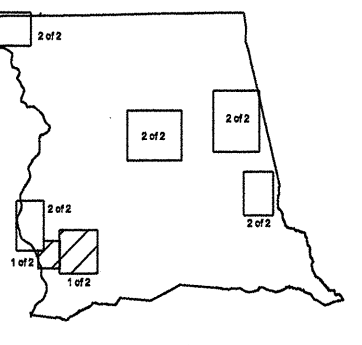
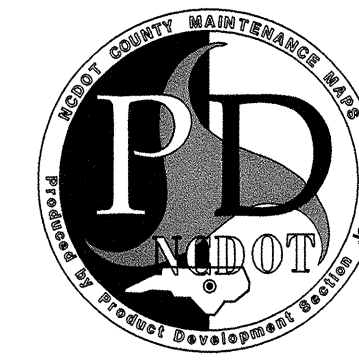


Disclaimer: The IMG Unit's goal is to provide the most accurate information as possible, the magnitude of the data prevents any guarantee of accuracy or completeness. If you find any information that is incorrect, please send your request to the IMG Unit.

COPIES OF THIS MAP ARE AVAILABLE AT THE FOLLOWING ADDRESS:
N.C. DEPARTMENT OF TRANSPORTATION
INFORMATION, MAPPING, AND DIVISIONS
1000 EAST 17TH STREET, SUITE 401
RALEIGH, N.C. 27610
REVISED:
201100 JCH
120301 JCH
102802 JCH
122203 JCH
120304 JCH
101805 JCH
122806 TRP



---	PRIMITIVE OR UNIMPROVED ROAD
---	GRADES AND DRAINED ROAD
---	SOIL, GRAVEL OR STONE SURFACED ROAD
---	HARD SURFACED ROAD
---	4 LANE UNDIVIDED HIGHWAY
---	DIVIDED HIGHWAY
---	HIGHWAY WITH FRONTAGE ROADS
---	FCA FULL CONTROL ACCESS
---	NON-SYSTEM ROAD
---	PROJECTED LOCATION
---	INTERSECTION DISTANCE
---	TRAFFIC CIRCLE
---	HIGHWAY INTERCHANGE
---	DETAILED HIGHWAY INTERCHANGE
---	ROAD THROUGH MOUNTAIN PASS
---	HIGHWAY BRIDGE
---	UNDERPASS
---	OVERPASS
---	DRAW SPAN ON BRIDGE
---	HIGHWAY TUNNEL
---	FORD
---	INTERSTATE HIGHWAY
---	U.S. NUMBERED HIGHWAY
---	N.C. NUMBERED HIGHWAY
---	U.S. NUMBERED BICYCLE ROUTE
---	N.C. NUMBERED BICYCLE ROUTE
---	INTERSTATE INTERCHANGE NUMBER
---	SECONDARY ROAD NUMBER
---	CABLE
---	RAILROAD, ANY NUMBER OF TRACKS
---	USED BY SINGLE OPERATING COMPANY
---	RAILROAD, ANY NUMBER OF TRACKS
---	USED BY MORE THAN ONE OPERATING COMPANY OR SAME OR ADJACENT RIGHTS-OF-WAY
---	RAILROAD STATION
---	GRADE CROSSING
---	UNDERPASS
---	OVERPASS
---	RAILROAD TUNNEL
---	INSET AREA
---	URBAN EXTENSION
---	BOUNDARY LINE
---	RESERVATION FOR
---	CITY LIMIT
---	NATIONAL FOREST BOUNDARY
---	STATE FOREST BOUNDARY
---	FEDERAL GAMELAND BOUNDARY
---	STATE GAMELAND BOUNDARY
---	MILITARY RESERVATION BOUNDARY
---	COUNTY LINE
---	STATE LINE
---	INCORPORATED CITY OR VILLAGE (GENERALIZED)
---	FREE OR TOLL FERRY
---	CANAL
---	NARROW STREAM
---	WIDE STREAM
---	DAM WITH LOCK
---	DAM
---	RESERVOIR, POND, OR LAKE
---	COMMUNITY AND TOWN CENTER
---	COUNTY SEAT
---	SCHOOL
---	COLLEGE OR UNIVERSITY
---	HOSPITAL
---	CHURCH
---	CHURCH WITH CEMETERY
---	CEMETERY
---	PATROL STATION
---	CORRECTIONAL OR PENAL INSTN.
---	HIGHWAY GARAGE OR MAINT. YARD
---	HIGHWAY DIV. OR DIST. OFFICE
---	WEIGHT STATION
---	MOUNTAIN, SMALL HISTORICAL SITE
---	LIGHTHOUSE
---	MOUNTAIN PEAK
---	REST AREA
---	TRIANGULATION STATION
---	COAST GUARD STATION
---	MILITARY AIRFIELD
---	COMMERCIAL OR MUNICIPAL FIELD
---	HAMPER ON FIELD
---	LANDING STRIP
---	MARKED AUXILIARY FIELD



2007 AADT

ANNUAL AVERAGE DAILY TRAFFIC

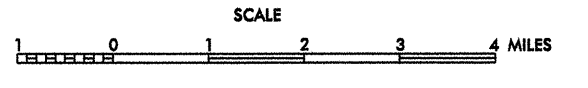
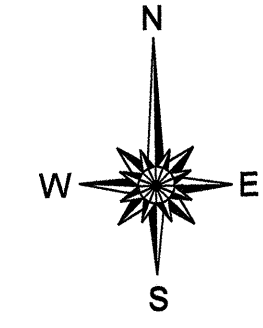
MONTGOMERY COUNTY

NORTH CAROLINA

TRAFFIC SURVEY GROUP

GENERATED BY THE
TRANSPORTATION PLANNING BRANCH

PREPARED BY THE
NORTH CAROLINA DEPARTMENT OF TRANSPORTATION
INFORMATION TECHNOLOGY - IMG UNIT
IN COOPERATION WITH THE
U.S. DEPARTMENT OF TRANSPORTATION
FEDERAL HIGHWAY ADMINISTRATION



SCALE FOR ENLARGEMENTS

