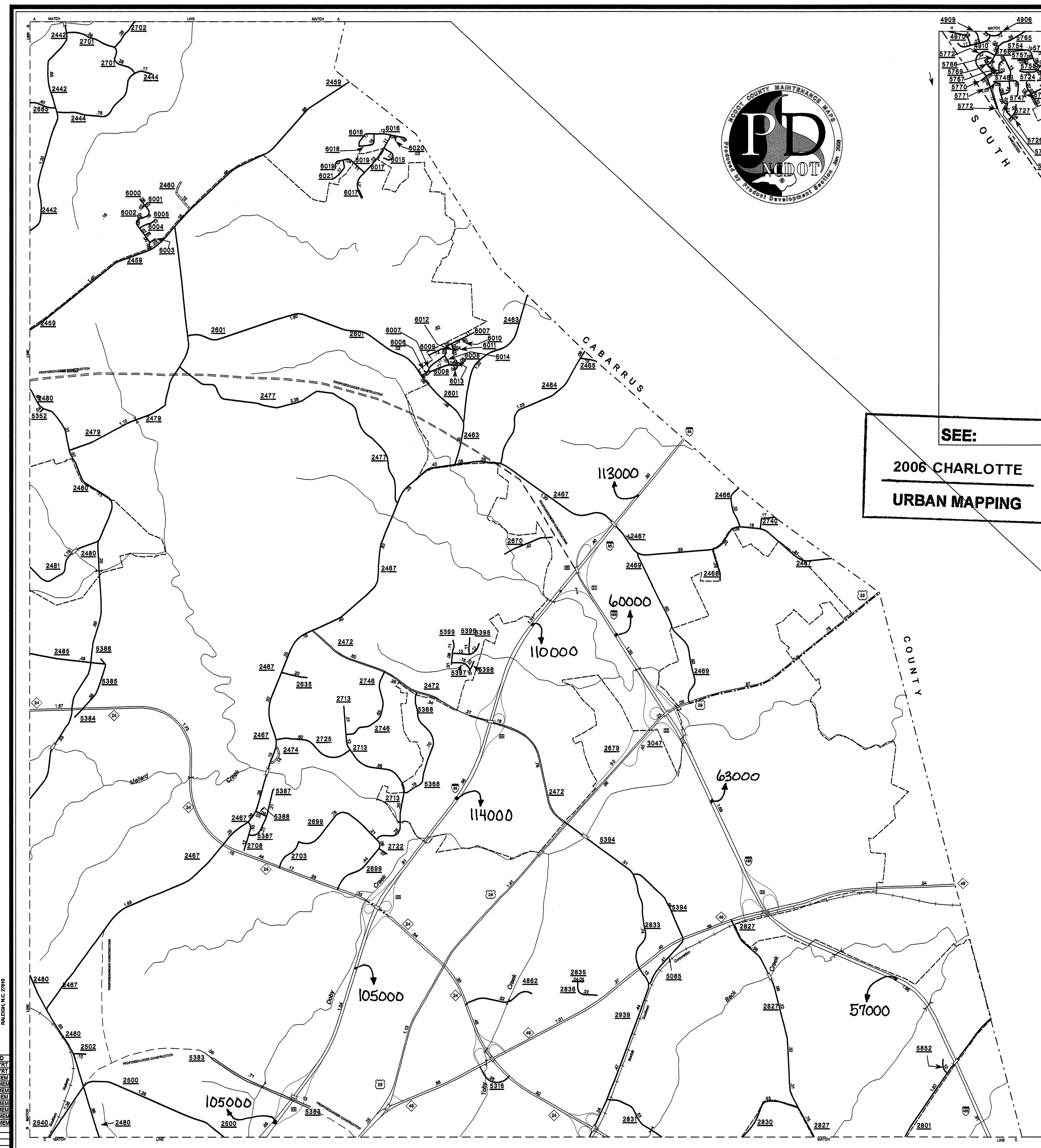


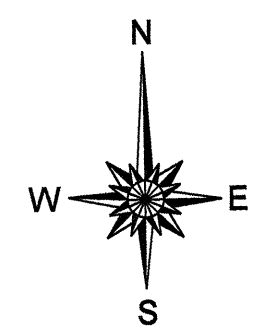
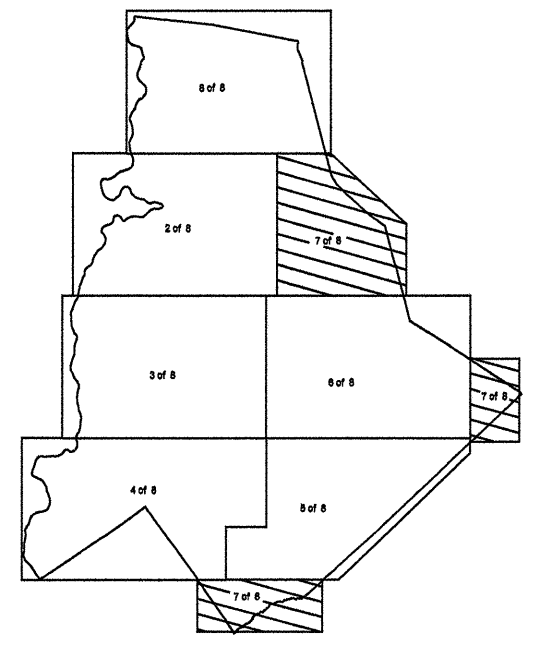
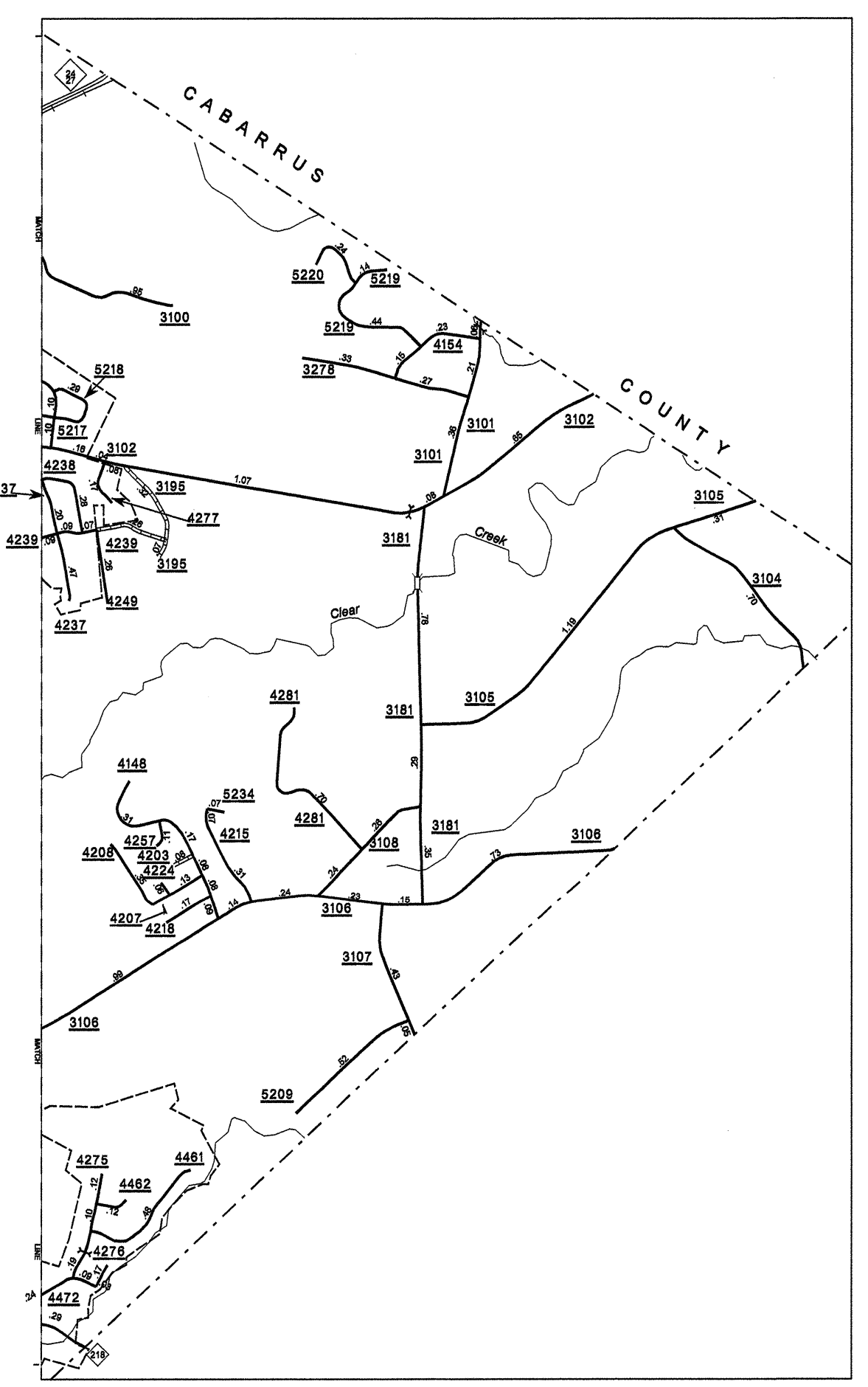
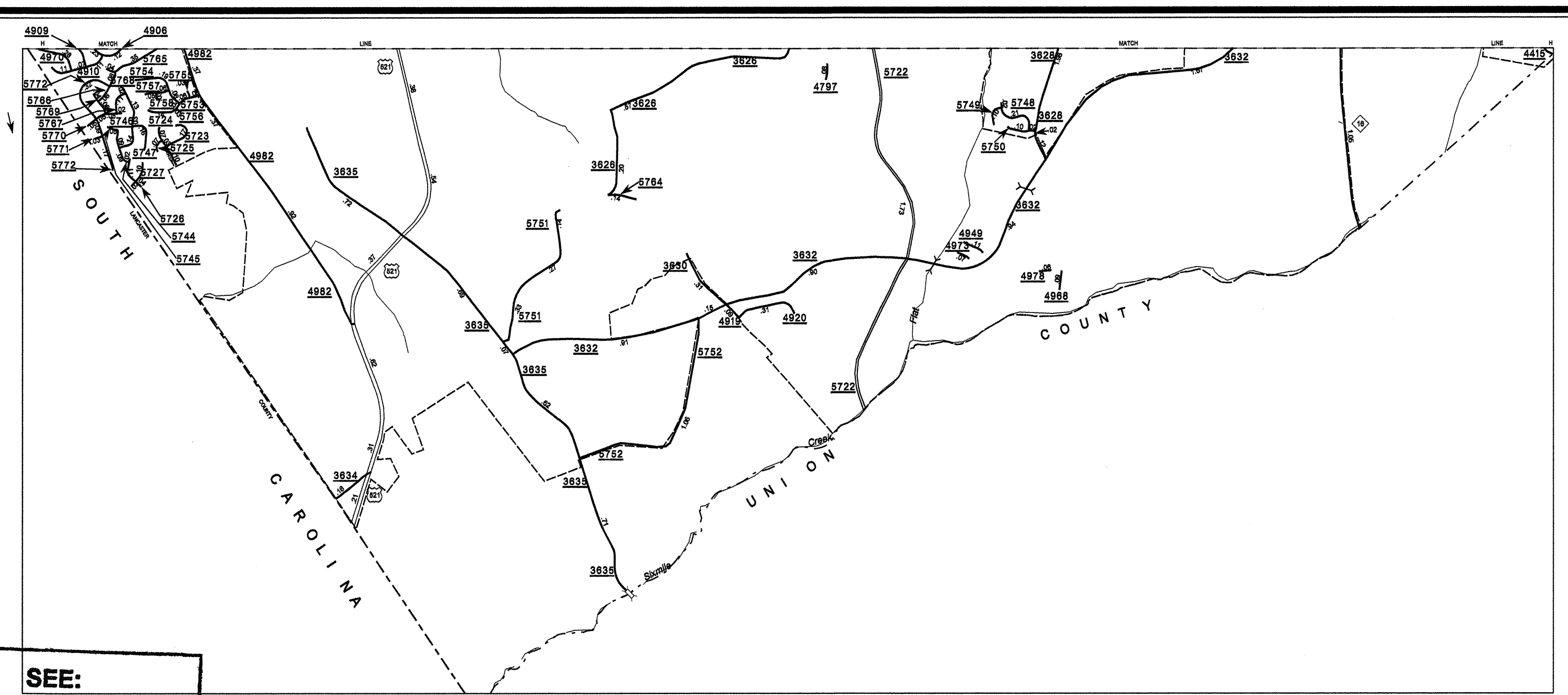
Disclaimer: The GIS Unit's goal is to provide the most accurate information as possible, the magnitude of the data prevents any guarantee of accuracy or completeness. If you find any information that is incorrect, please send your request to the GIS Unit.

COPIES OF THIS MAP ARE AVAILABLE
FOR PURCHASE AT A FORMAL COST.
ADDRESS:
N.C. DEPARTMENT OF TRANSPORTATION
INFORMATION SERVICES DIVISION
1700 SOUTH PARKWAY
RALEIGH, N.C. 27615

REVISED
8/31/05 VMT
8/20/05 VMT
2/20/05 MEM
12/20/04 MEM
4/16/07 MEM
8/4/07 MEM
11/20/07 MEM
10/30/07 MEM
11/20/07 MEM
12/20/07 MEM



SEE:
2006 CHARLOTTE
URBAN MAPPING



ENLARGED MUNICIPAL AND SUBURBAN AREAS
2007 AADT
ANNUAL AVERAGE DAILY TRAFFIC
MECKLENBURG COUNTY
NORTH CAROLINA
GENERATED BY THE
TRAFFIC SURVEY GROUP
TRANSPORTATION PLANNING BRANCH
PREPARED BY THE
NORTH CAROLINA DEPARTMENT OF TRANSPORTATION
INFORMATION TECHNOLOGY - IMG UNIT
IN COOPERATION WITH THE
U.S. DEPARTMENT OF TRANSPORTATION
FEDERAL HIGHWAY ADMINISTRATION

