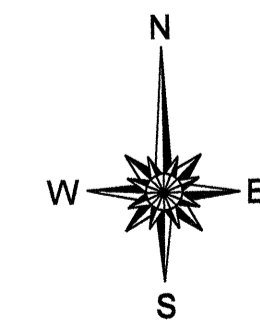
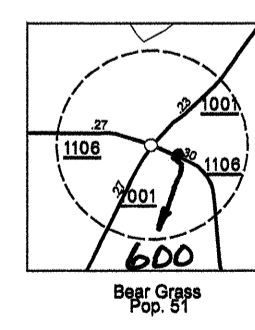
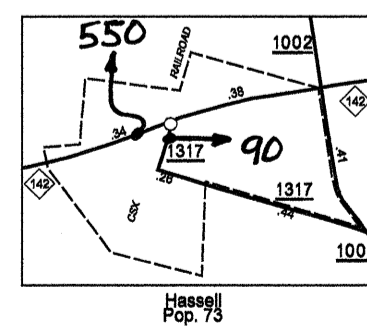
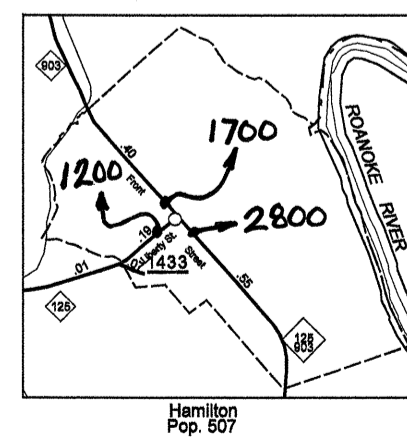
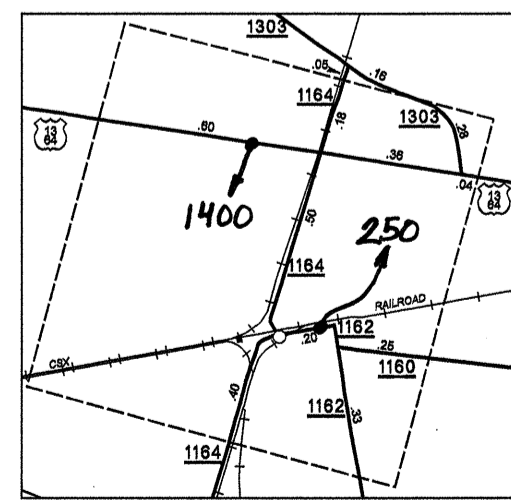
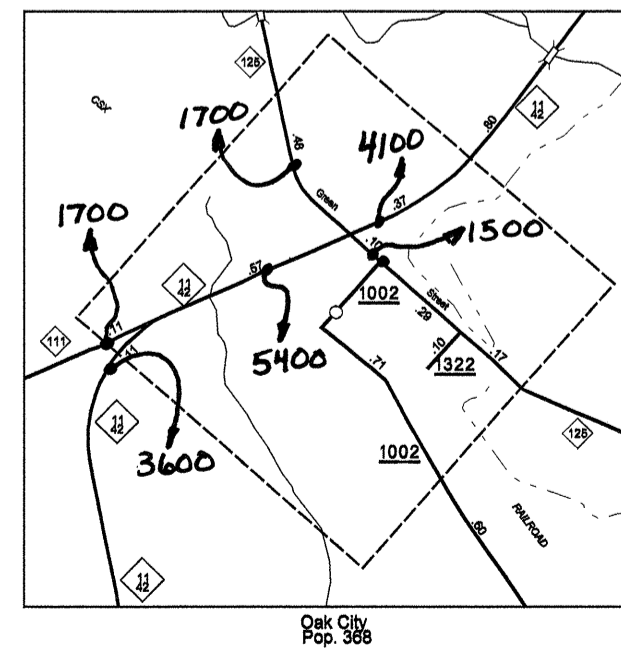
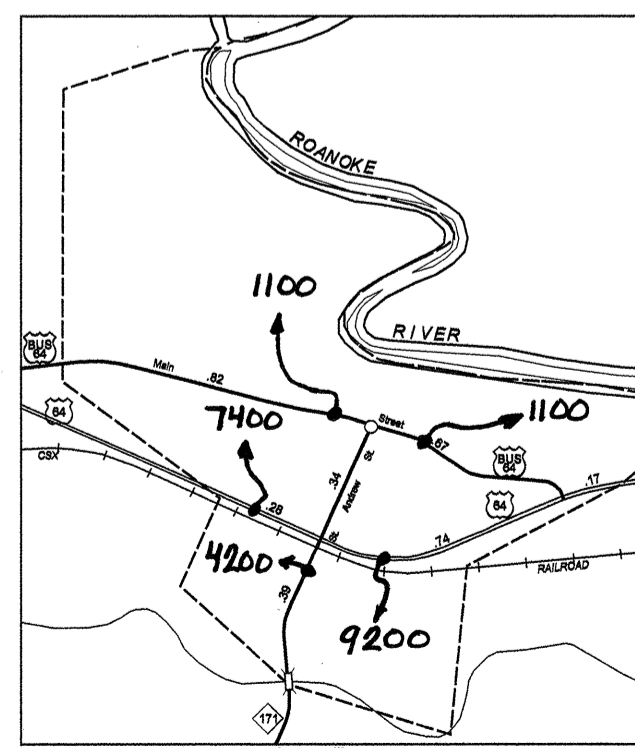
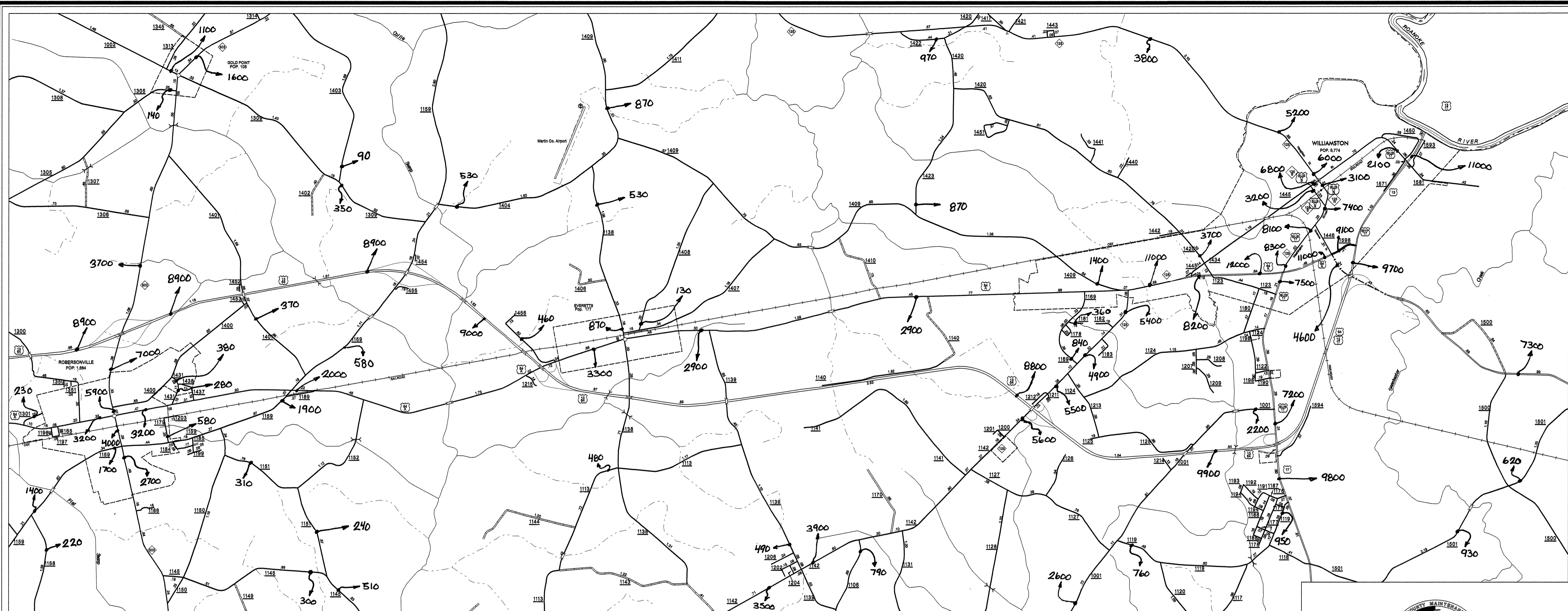
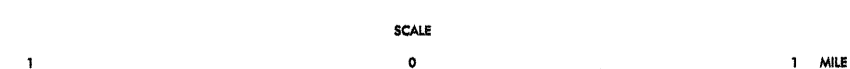


Disclaimer: The GIS Unit's goal is to provide the most accurate information as possible, the magnitude of the data prevents any guarantee of accuracy or completeness. If you find any information that is incorrect, please send your request to the GIS Unit.



ENLARGED MUNICIPAL AND SUBURBAN AREAS
2007 AADT
 ANNUAL AVERAGE DAILY TRAFFIC
MARTIN COUNTY
 NORTH CAROLINA
 GENERATED BY THE
TRAFFIC SURVEY GROUP
 TRANSPORTATION PLANNING BRANCH
 PREPARED BY THE
 NORTH CAROLINA DEPARTMENT OF TRANSPORTATION
 INFORMATION TECHNOLOGY - IMG UNIT
 IN COOPERATION WITH THE
 U.S. DEPARTMENT OF TRANSPORTATION
 FEDERAL HIGHWAY ADMINISTRATION

170



10,000 FOOT GRID BASED ON NORTH CAROLINA PLANE COORDINATE SYSTEM
 POLYCONIC PROJECTION

SHEET 2 OF 2

COPIES OF THIS MAP ARE AVAILABLE TO THE PUBLIC AT A MINIMAL COST.
 M.C. DEPARTMENT OF TRANSPORTATION
 INFORMATION, MAPPING AND SERVICES
 1000 EAST MAIN STREET
 RALEIGH, N.C. 27601
 REVISED
 1/7/02 MSO
 3/13/03 MSO
 3/7/03 MSO
 7/27/03 MSO
 10/29/03 MSO
 4/28/04 MSO
 8/1/04 MSO
 8/1/06 ELO
 10/31/06 ELO