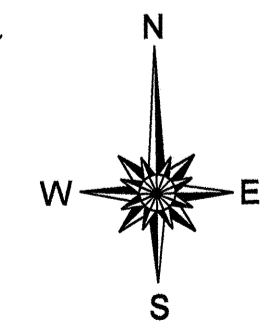
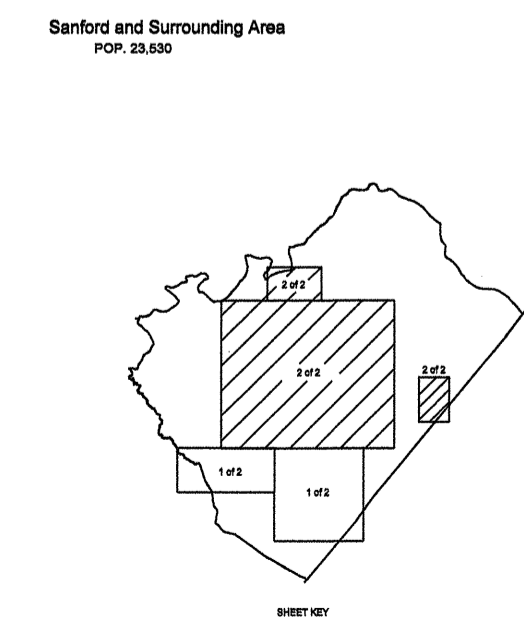
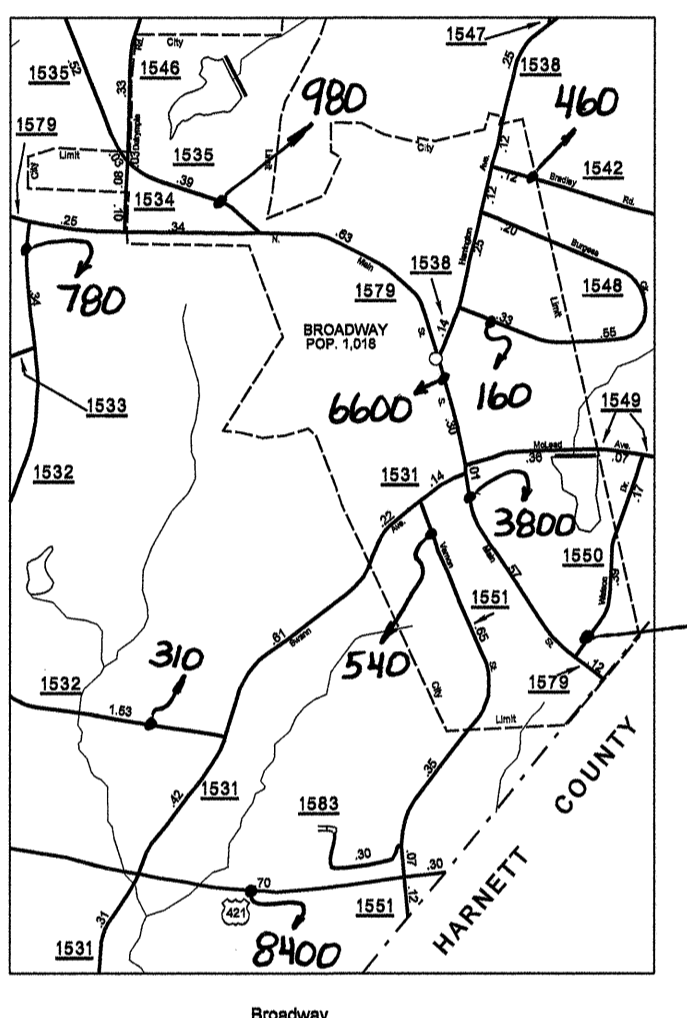
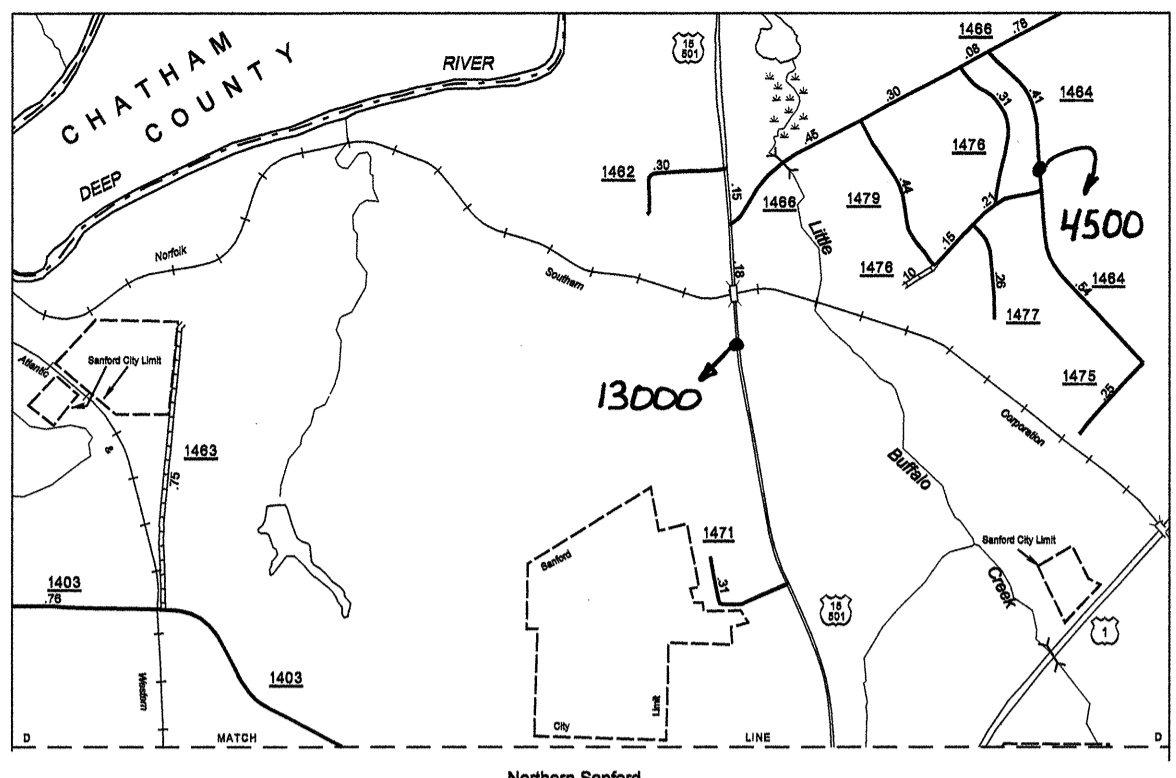
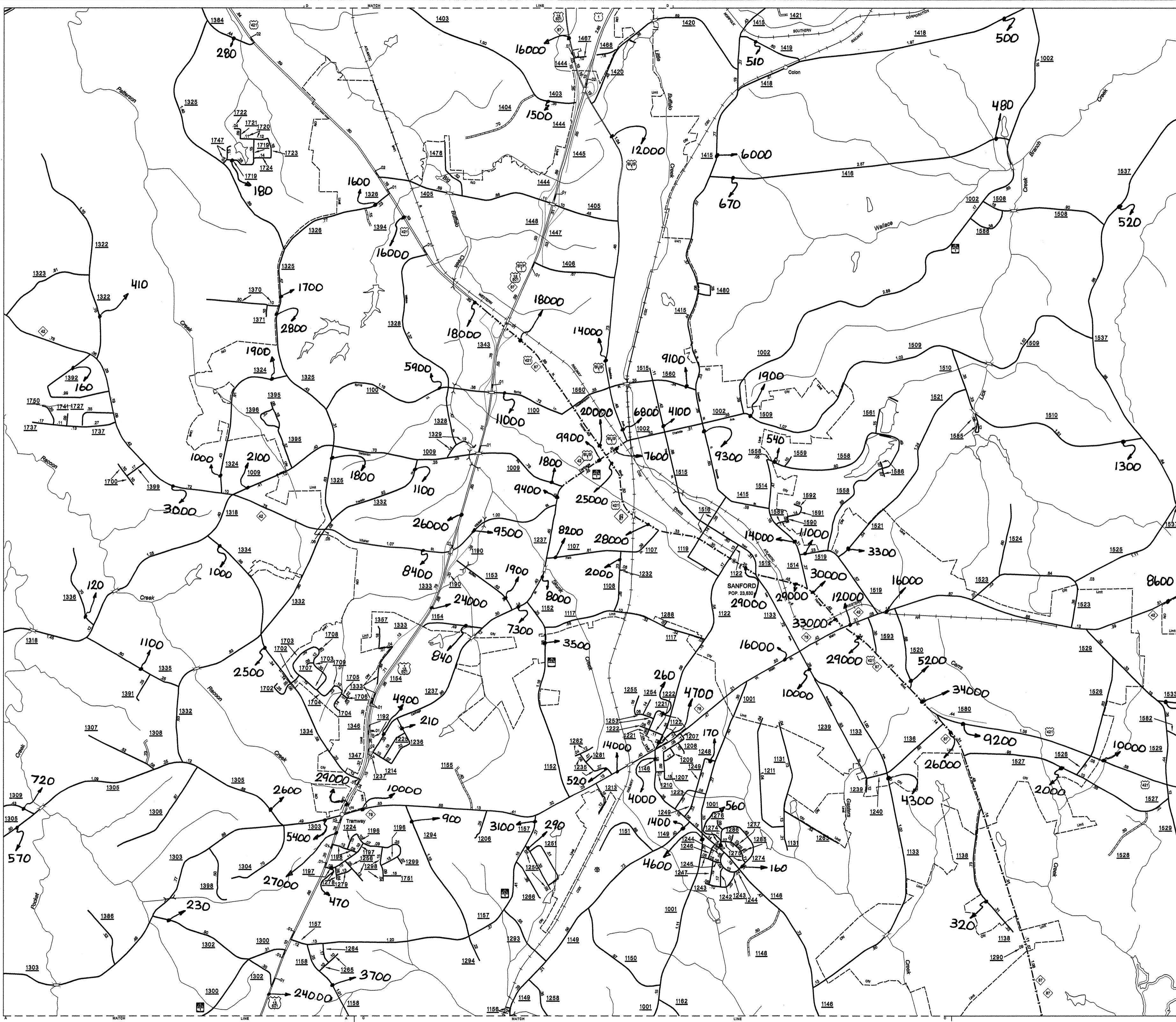


Disclaimer: The IMC Unit's goal is to provide the most accurate information as possible, the magnitude of the data prevents any guarantee of accuracy or completeness. If you find any information that is incorrect, please send your request to the IMC Unit.

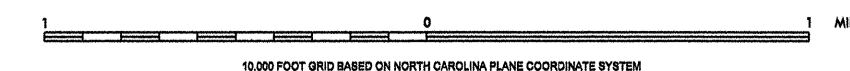
COPIES OF THIS MAP ARE AVAILABLE AT THE FOLLOWING ADDRESS:
N.C. DEPARTMENT OF TRANSPORTATION
INFORMATION SERVICES DIVISION
100 SOUTH PARKWAY
RALEIGH, N.C. 27603

REVISED	BY
2/27/00	JCH
7/27/01	JCH
11/17/03	JCH
12/28/04	JCH
01/21/05	JCH
12/20/06	TRP



ENLARGED MUNICIPAL AND SUBURBAN AREAS
2007 AADT
ANNUAL AVERAGE DAILY TRAFFIC
LEE COUNTY
NORTH CAROLINA
GENERATED BY THE
TRAFFIC SURVEY GROUP
TRANSPORTATION PLANNING BRANCH
PREPARED BY THE
NORTH CAROLINA DEPARTMENT OF TRANSPORTATION
INFORMATION TECHNOLOGY - IMG UNIT
IN COOPERATION WITH THE
U.S. DEPARTMENT OF TRANSPORTATION
FEDERAL HIGHWAY ADMINISTRATION

158



10,000 FOOT GRID BASED ON NORTH CAROLINA PLANE COORDINATE SYSTEM
POLYCONIC PROJECTION