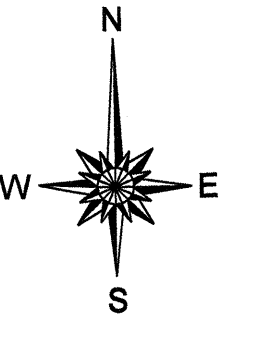
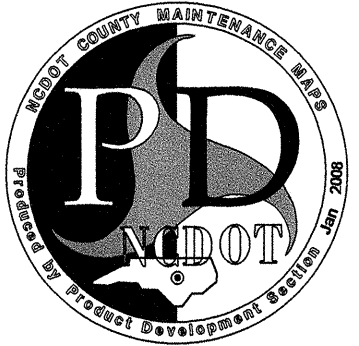
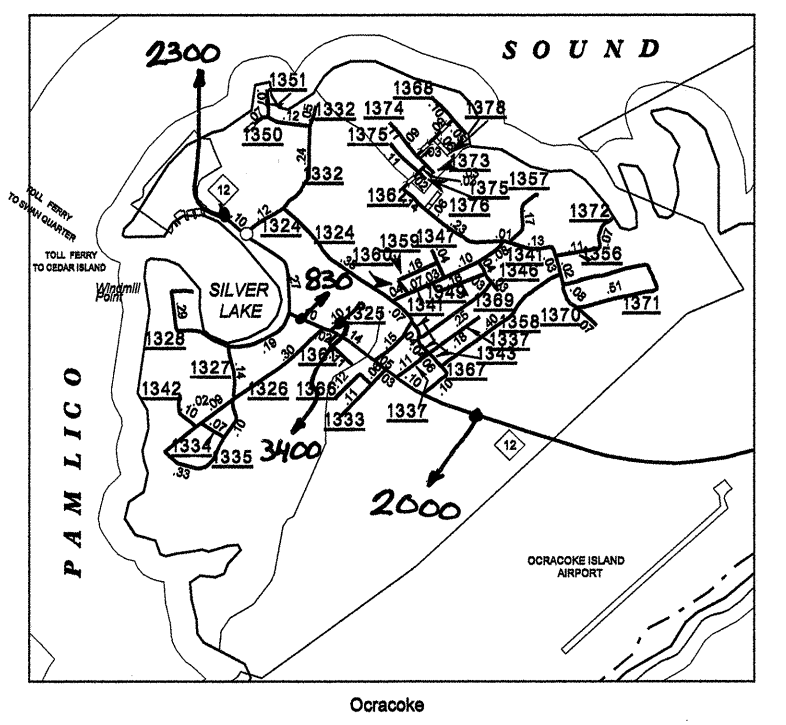
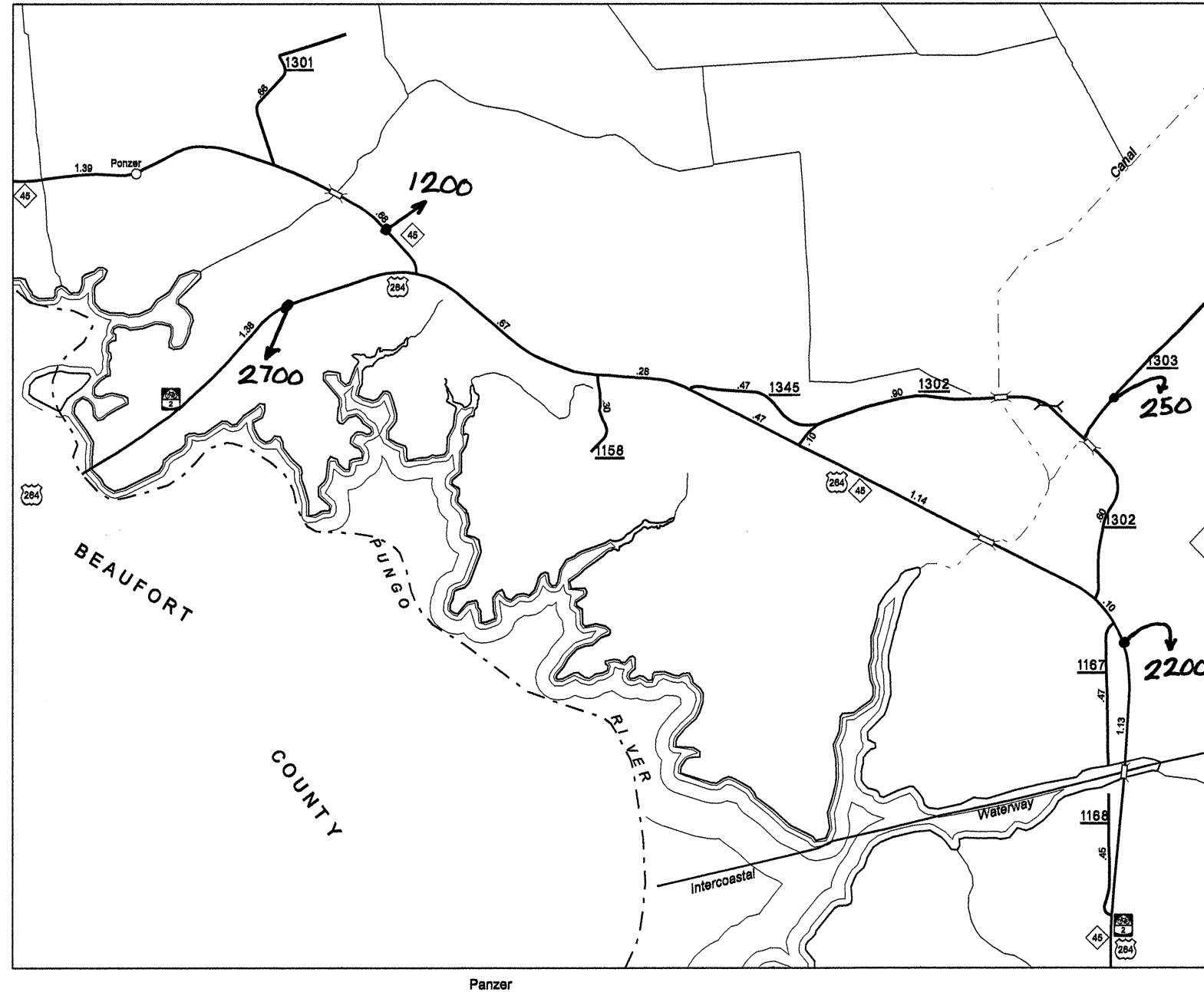
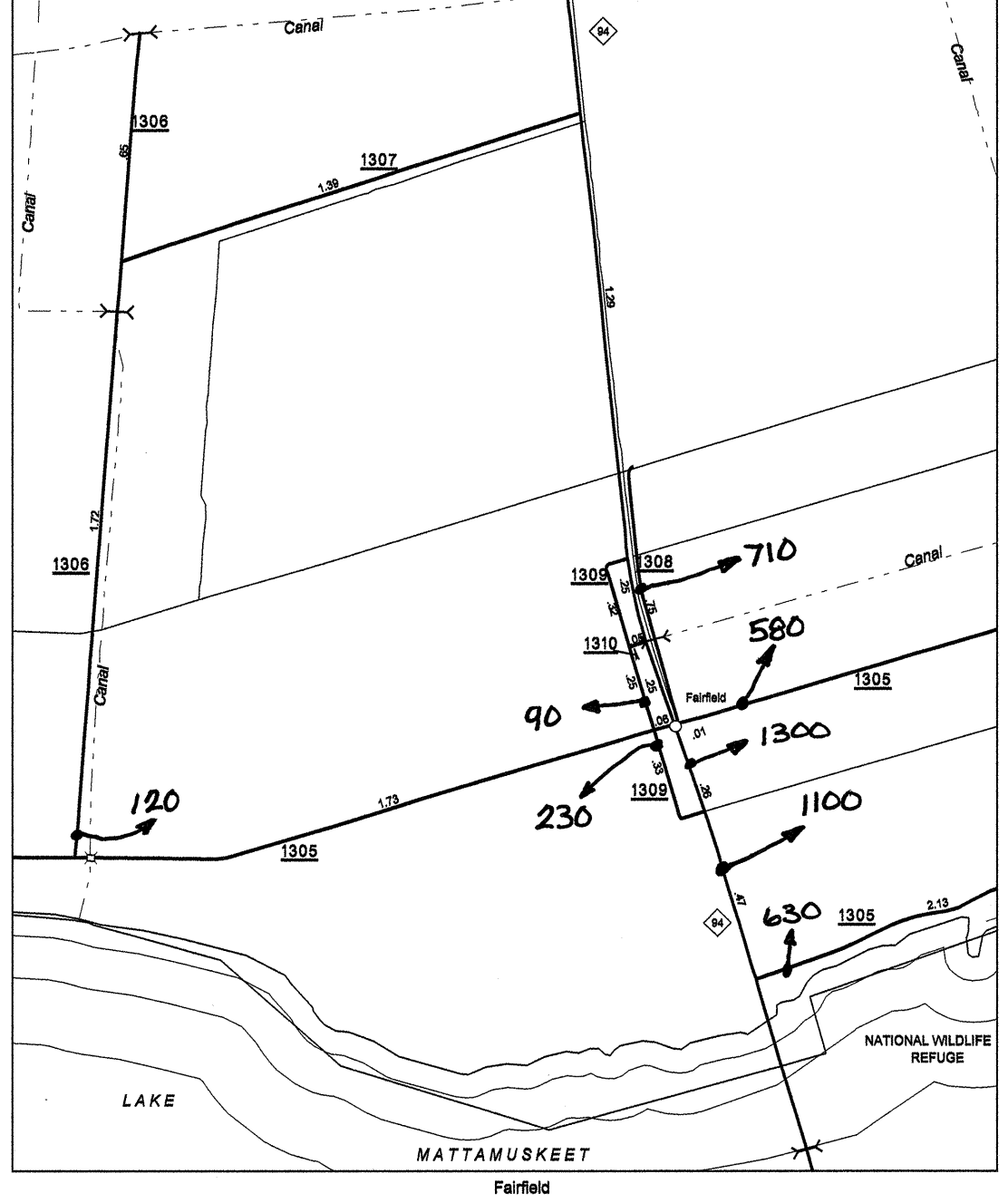
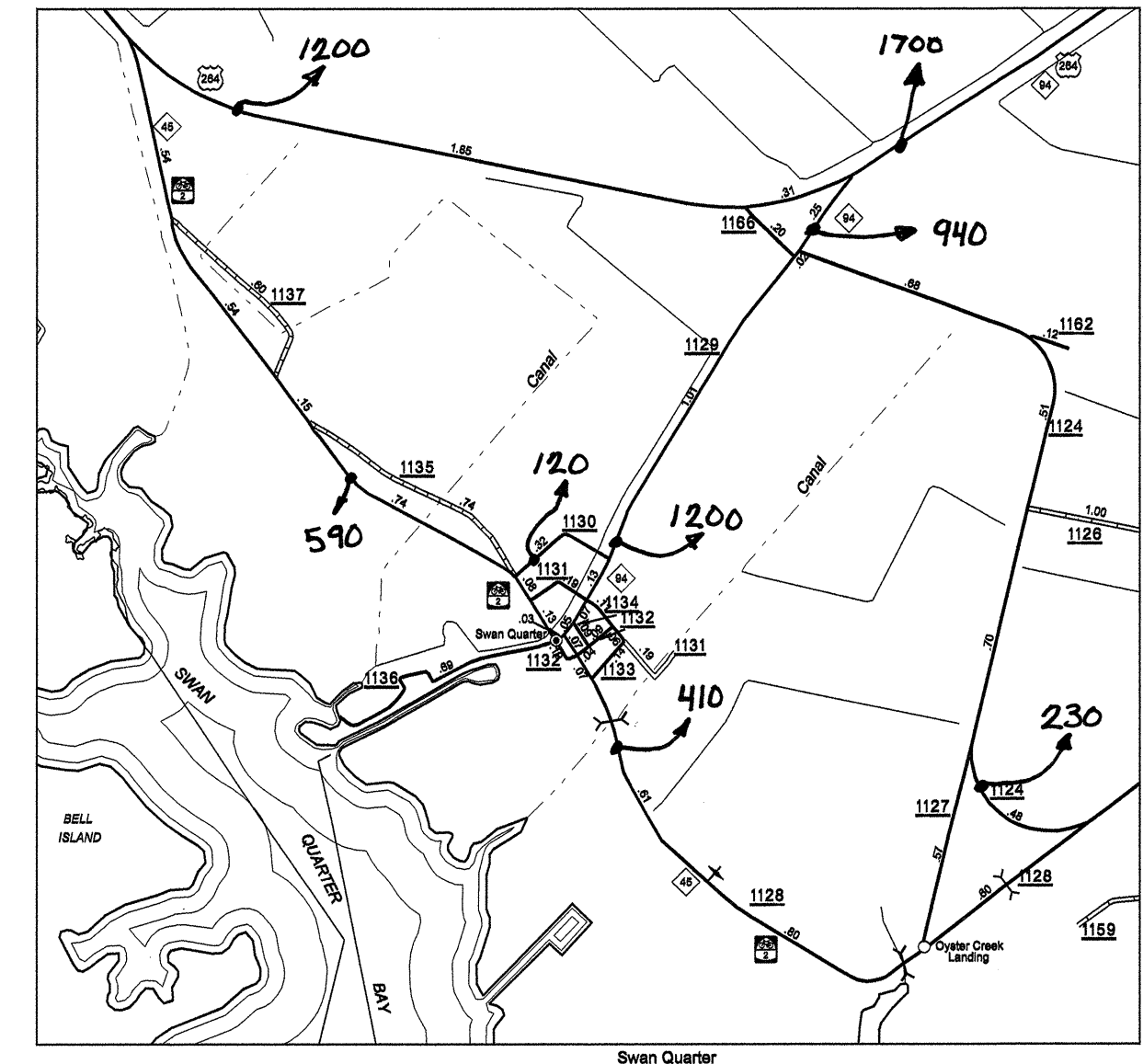
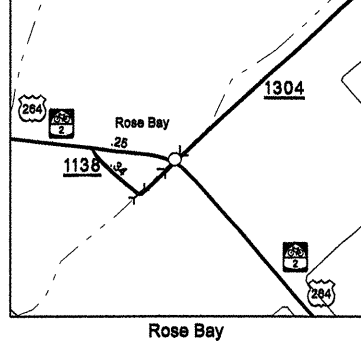
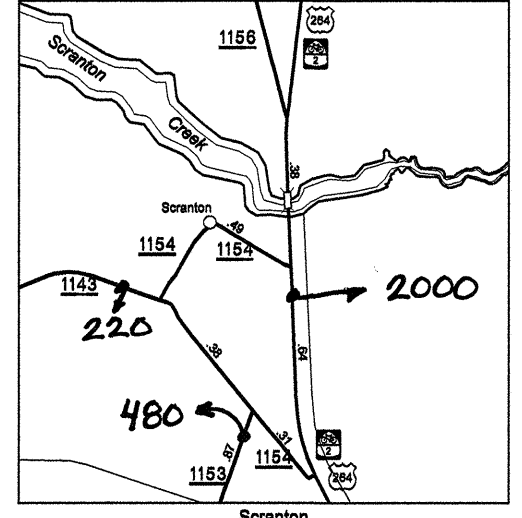
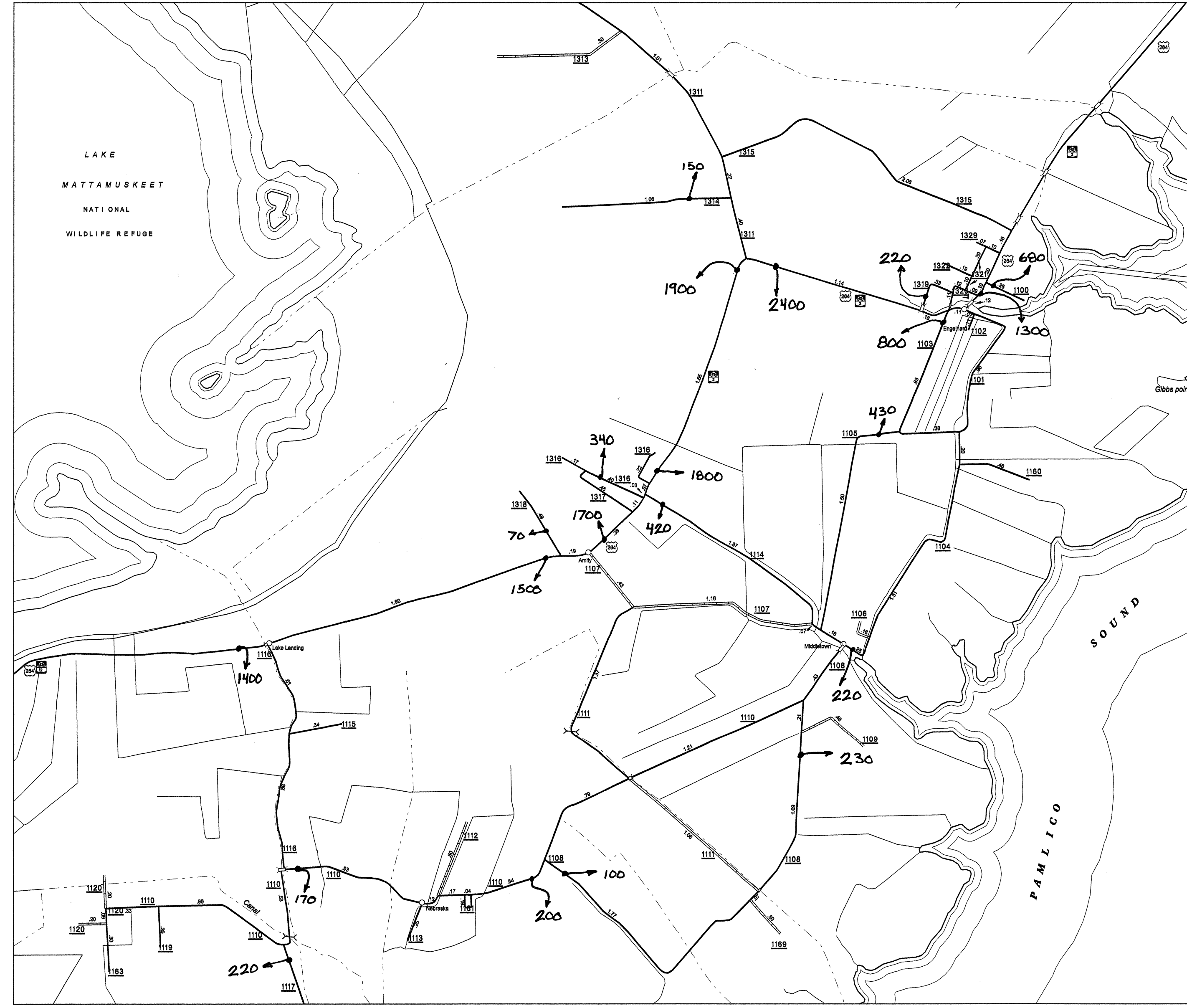


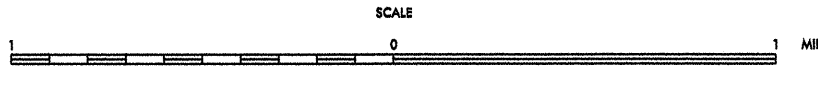
Disclaimer: The GIS Unit's goal is to provide the most accurate information as possible, the magnitude of the data prevents any guarantee of accuracy or completeness. If you find any information that is incorrect, please send your request to the GIS Unit.

HYDE COUNTY  
 SHEET 1  
 COPIES OF THIS MAP ARE AVAILABLE:  
 AT A FORMAL COST:  
 N.C. DEPARTMENT OF TRANSPORTATION  
 INFORMATION SERVICES AND BUSINESS  
 DEVELOPMENT  
 RALEIGH, N.C. 27699

REVISED	DATE
17402	MS90
31703	MS90
31703	MS90
10500	MS90
10500	MS90
8404	MS90
12402	MS90
10310	MS90



ENLARGED MUNICIPAL AND SUBURBAN AREAS  
**2007 AADT**  
 ANNUAL AVERAGE DAILY TRAFFIC  
**HYDE COUNTY**  
 NORTH CAROLINA  
 GENERATED BY THE  
**TRAFFIC SURVEY GROUP**  
 TRANSPORTATION PLANNING BRANCH  
 PREPARED BY THE  
 NORTH CAROLINA DEPARTMENT OF TRANSPORTATION  
 INFORMATION TECHNOLOGY - IMG UNIT  
 IN COOPERATION WITH THE  
 U.S. DEPARTMENT OF TRANSPORTATION  
 FEDERAL HIGHWAY ADMINISTRATION



142