

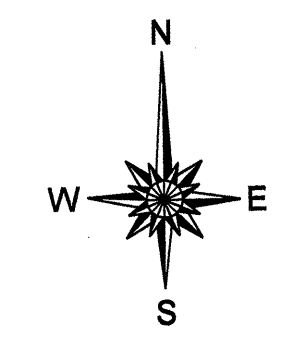
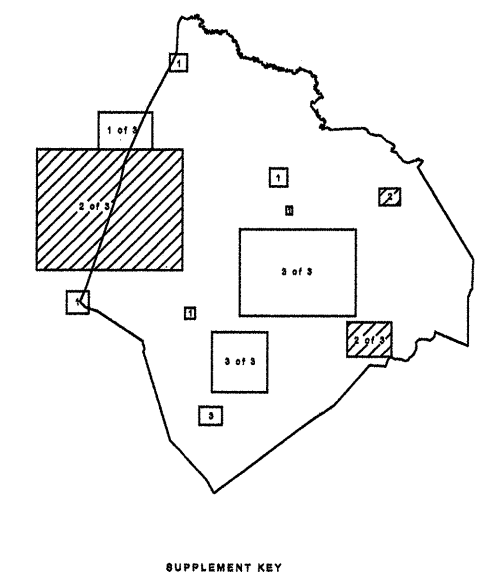
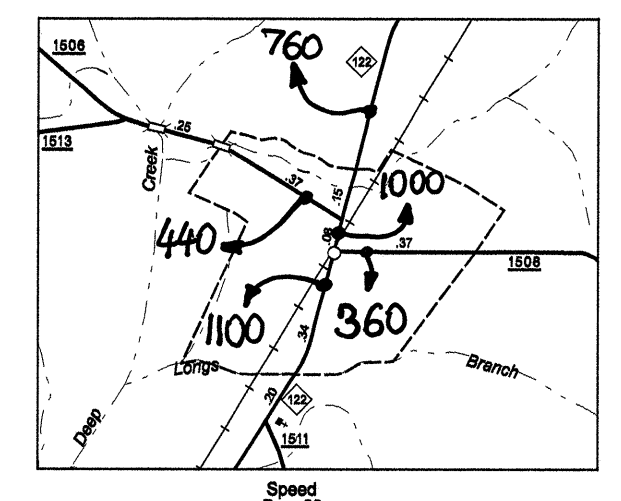
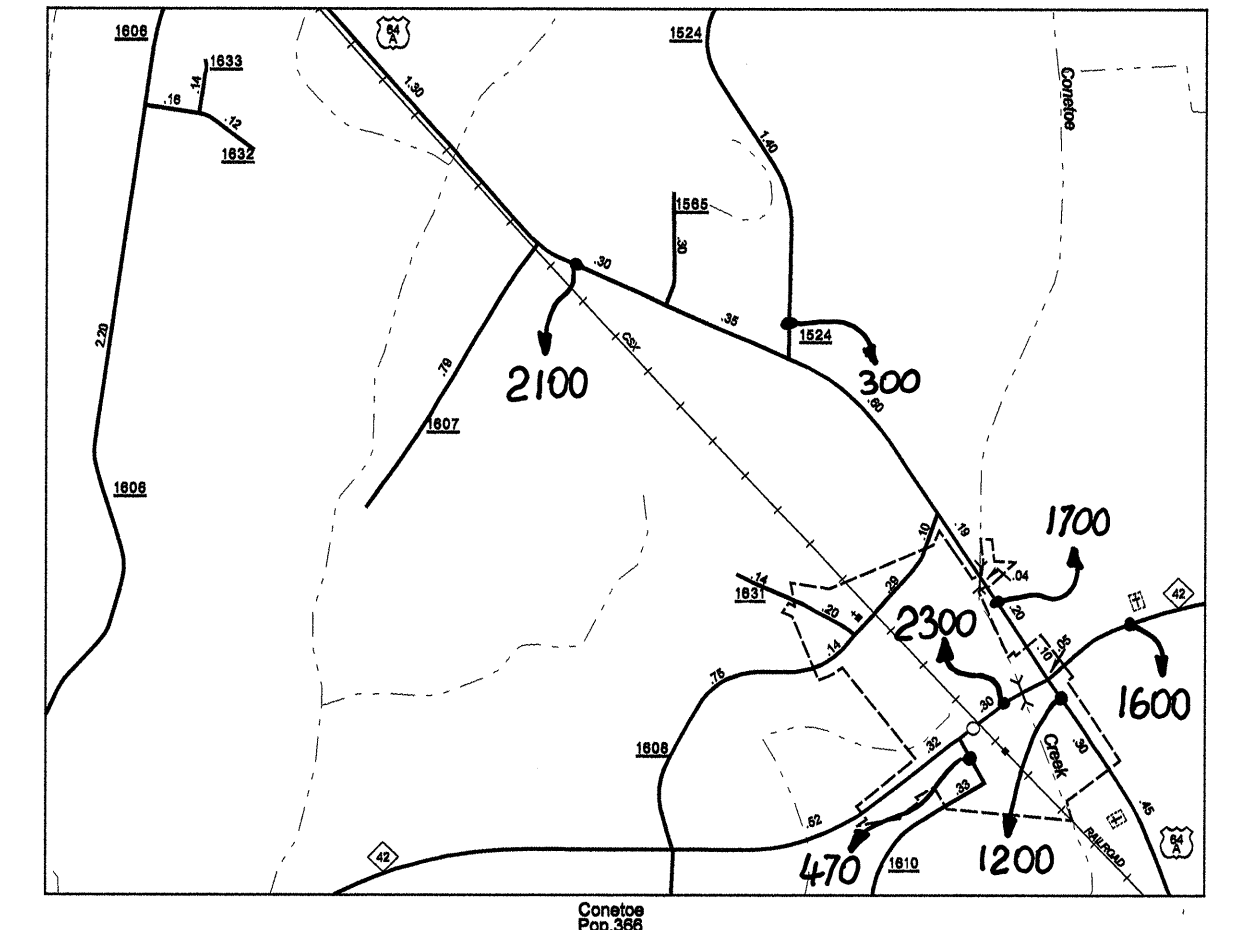
Disclaimer: The GIS Unit's goal is to provide the most accurate information as possible, the magnitude of the data prevents any guarantee of accuracy or completeness. If you find any information that is incorrect, please send your request to the GIS Unit.

EDGECOMBE  
 ADDRESS:  
 N.C. DEPARTMENT OF TRANSPORTATION  
 3001 CAPITAL SQUARE, SUITE 200  
 RALEIGH, N.C. 27603

REVISED
1/2007 MEM
1/2007 MEM
5/27/02 TRP
5/15/02 MEM
10/25/01 MEM
3/28/03 MEM
4/15/04 TRP
2/7/05 TRP
8/14/08 BOG



**SEE:  
 2007 ROCKY MOUNT  
 URBAN MAPPING**



ENLARGED MUNICIPAL AND SUBURBAN AREAS  
**2007 AADT**  
 ANNUAL AVERAGE DAILY TRAFFIC  
**EDGECOMBE COUNTY**  
 NORTH CAROLINA  
 GENERATED BY THE  
**TRAFFIC SURVEY GROUP**  
 TRANSPORTATION PLANNING BRANCH  
 PREPARED BY THE  
 NORTH CAROLINA DEPARTMENT OF TRANSPORTATION  
 INFORMATION TECHNOLOGY - IMG UNIT  
 IN COOPERATION WITH THE  
 U.S. DEPARTMENT OF TRANSPORTATION  
 FEDERAL HIGHWAY ADMINISTRATION

