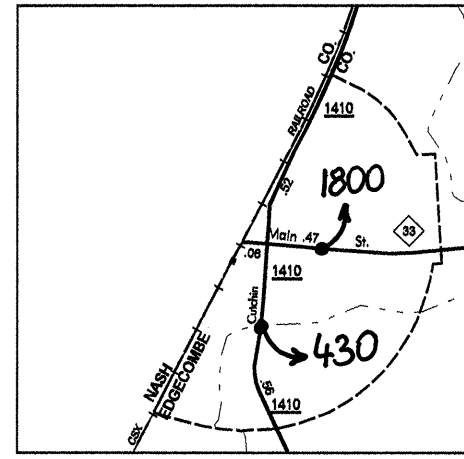


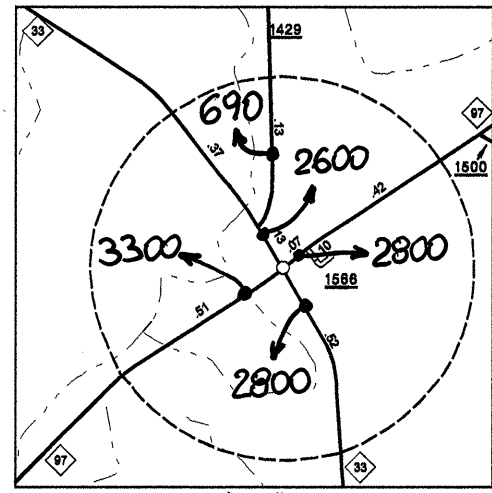
Disclaimer: The data herein is provided to provide the most accurate information as possible, the magnitude of the data prevents any guarantee of accuracy or completeness. If you find any information that is incorrect, please send your request to the GIS Unit.

CONTACT THE APPROPRIATE AGENCY TO OBTAIN A MORE DETAILED ADDRESS.
N.C. DEPARTMENT OF TRANSPORTATION
3001 CAVEL DRIVE, SUITE 100
RALEIGH, N.C. 27619

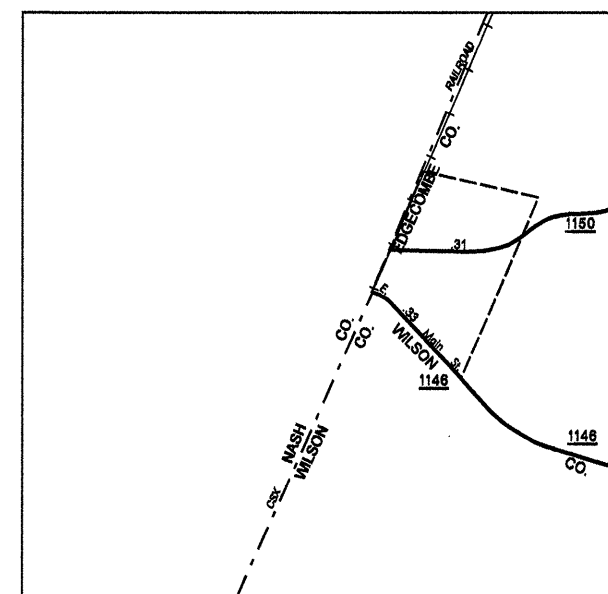
REVISED
10/20/01 MEM
12/20/02 MEM
10/27/03 MEM
10/13/02 MEM
10/25/02 MEM
10/25/03 MEM
4/15/04 TRP
2/7/05 TRP
8/14/09 BDD



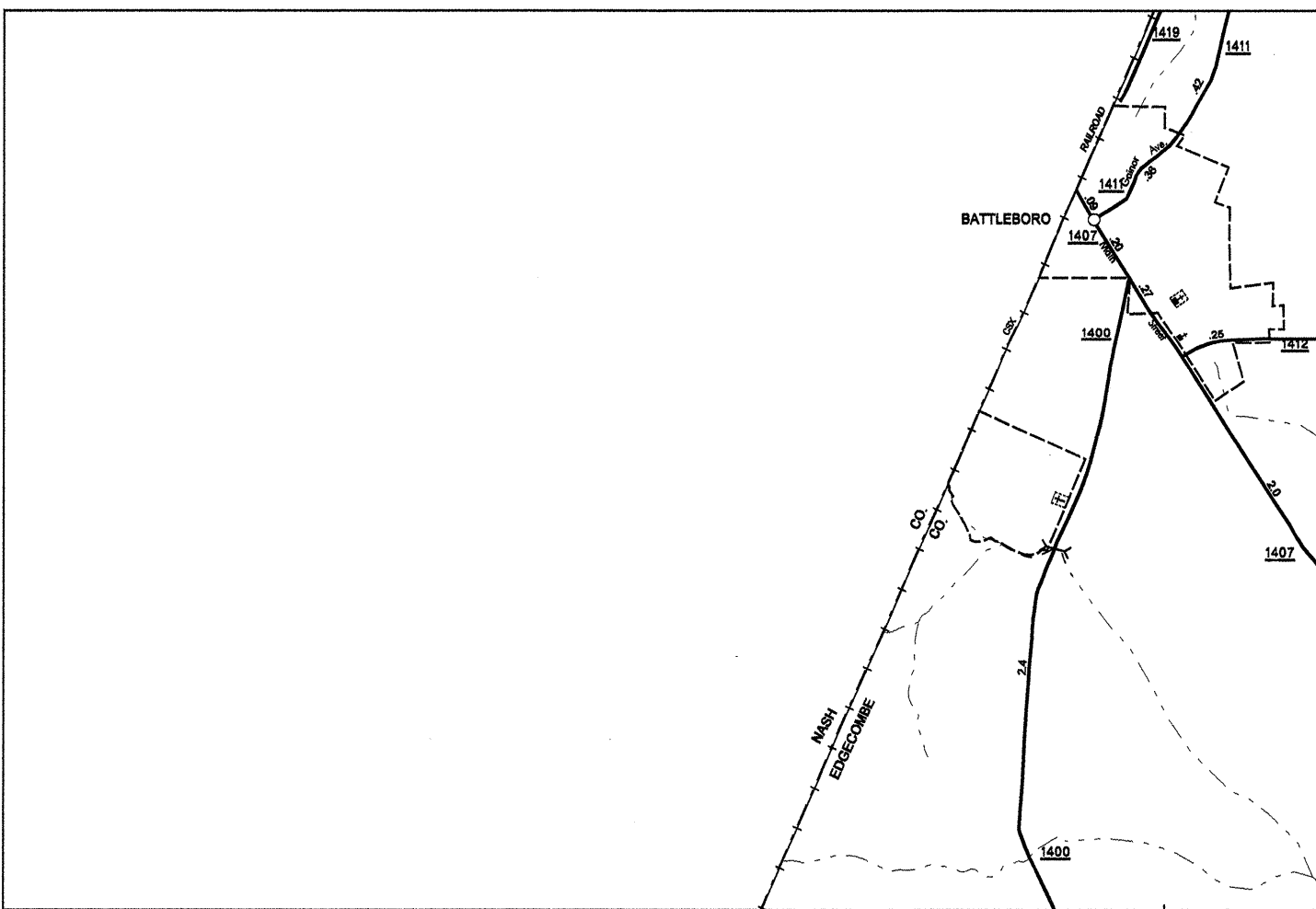
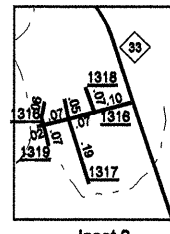
Whiteakers
Pop. 852



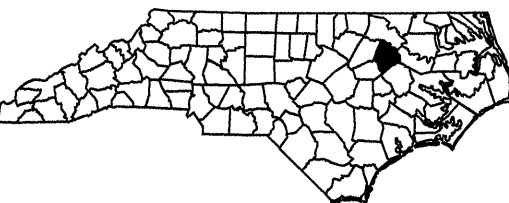
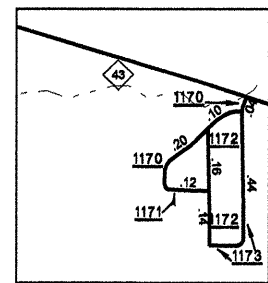
Leggett
Pop. 109



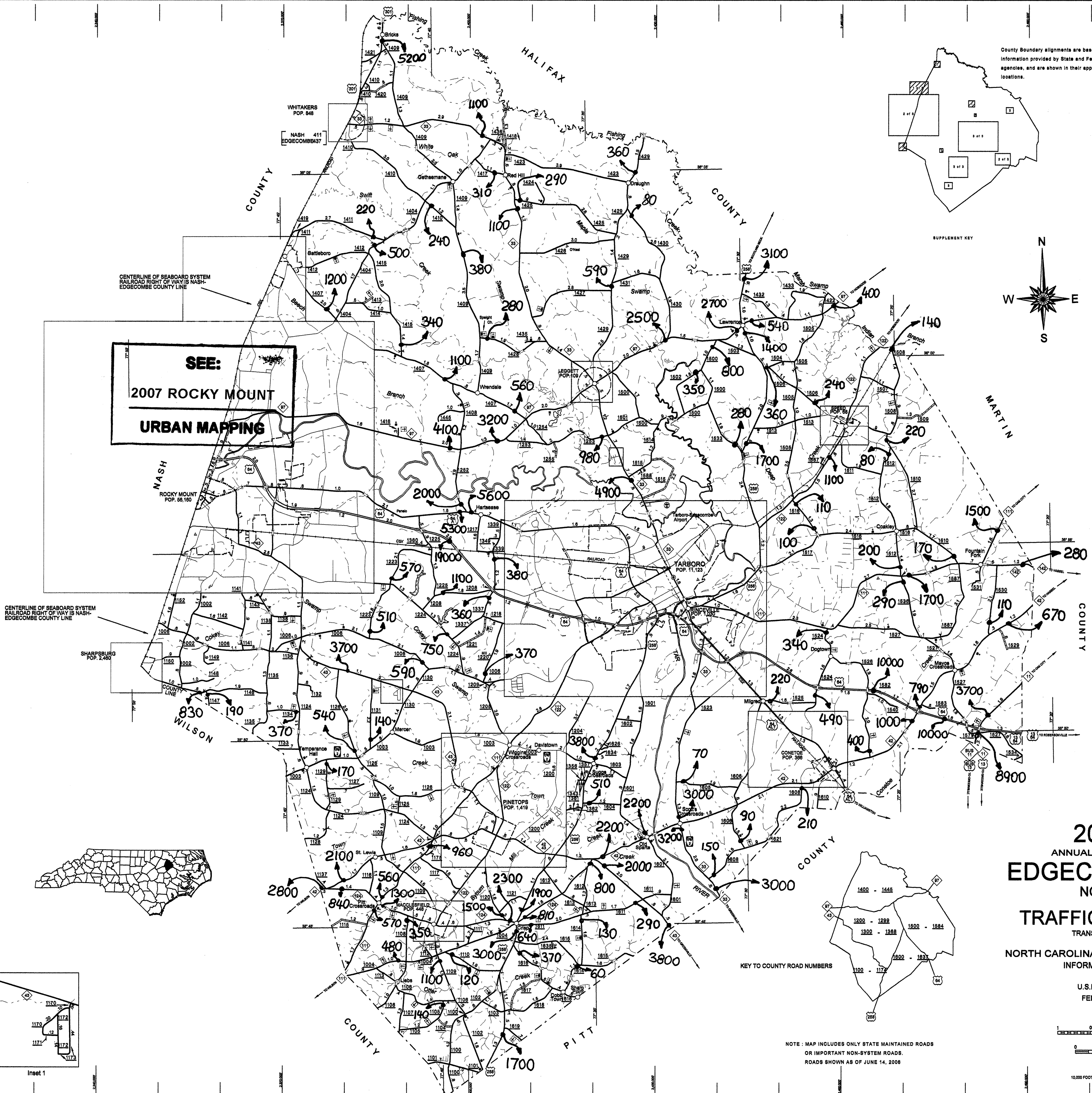
Sharpburg
Pop. 2,490



Battleboro (part of Rocky Mount) and vicinity

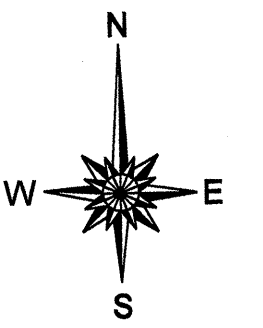


**SEE:
2007 ROCKY MOUNT
URBAN MAPPING**



County Boundary alignments are based on information provided by State and Federal agencies, and are shown in their approximate locations.

- LEGEND**
- PRIMITIVE OR UNIMPROVED ROAD
- GRADED AND DRAINED ROAD
- SOL GRAVEL OR STONE SURFACED ROAD
- HARD SURFACED ROAD
- 4 LANE UNDIVIDED HIGHWAY
- DIVIDED HIGHWAY
- HIGHWAY WITH FRONTAGE ROADS
- FULL CONTROL ACCESS
- NON-SYSTEM ROAD
- PROJECTED LOCATION
- INTERSECTION DISTANCE
- TRAFFIC CIRCLE
- HIGHWAY INTERCHANGE
- DETAILED HIGHWAY INTERCHANGE
- ROAD THROUGH MOUNTAIN PASS
- HIGHWAY BRIDGE
- UNDERPASS
- OVERPASS
- DRAW SPAN ON BRIDGE
- HIGHWAY TUNNEL
- FORD
- INTERSTATE HIGHWAY
- U.S. NUMBERED HIGHWAY
- N.C. NUMBERED HIGHWAY
- U.S. NUMBERED BICYCLE ROUTE
- N.C. NUMBERED BICYCLE ROUTE
- INTERSTATE INTERCHANGE NUMBER
- SECONDARY ROAD NUMBER
- CABLE
- RAILROAD, ANY NUMBER OF TRACKS USED BY SINGLE OPERATING COMPANY
- RAILROAD, ANY NUMBER OF TRACKS USED BY MORE THAN ONE OPERATING COMPANY ON SAME OR ADJACENT RIGHTS-OF-WAY
- RAILROAD STATION
- RAILROAD CROSSING
- UNDERPASS
- OVERPASS
- RAILROAD TUNNEL
- INSET AREA
- BOUNDARY LINE
- CITY LIMIT
- NATIONAL FOREST BOUNDARY
- STATE FOREST BOUNDARY
- FEDERAL GAMELAND BOUNDARY
- STATE GAMELAND BOUNDARY
- MILITARY RESERVATION BOUNDARY
- COUNTY LINE
- STATE LINE
- INCORPORATED CITY OR VILLAGE, (GENERALIZED)
- FREE OR TOLL FERRY
- CANAL
- NARROW STREAM
- WIDE STREAM
- DAM WITH LOCK
- DAM
- RESERVOIR, POND OR LAKE
- COMMUNITY AND TOWN CENTER
- COUNTY SEAT
- SCHOOL
- COLLEGE OR UNIVERSITY
- HOSPITAL
- CHURCH
- CHURCH WITH CEMETERY
- CEMETERY
- PATROL STATION
- CORRECTIONAL OR PENAL INSTN.
- HIGHWAY GARAGE OR MAINT. YARD
- HIGHWAY DIV. OR DIST. OFFICE
- WEIGHT STATION
- MONUMENT-SMALL HISTORICAL SITE
- LIGHTHOUSE
- MOUNTAIN PEAK
- REST AREA
- TRIANGULATION STATION
- COAST GUARD STATION
- MILITARY AIRFIELD
- COMMERCIAL OR MUNICIPAL FIELD
- HANGAR ON FIELD
- LANDING STRIP
- MARKED AUXILIARY FIELD



2007 AADT
ANNUAL AVERAGE DAILY TRAFFIC
EDGECOMBE COUNTY
NORTH CAROLINA
GENERATED BY THE
TRAFFIC SURVEY GROUP
TRANSPORTATION PLANNING BRANCH
PREPARED BY THE
NORTH CAROLINA DEPARTMENT OF TRANSPORTATION
INFORMATION TECHNOLOGY - IMG UNIT
IN COOPERATION WITH THE
U.S. DEPARTMENT OF TRANSPORTATION
FEDERAL HIGHWAY ADMINISTRATION

SCALE
0 1 2 3 4 MILES

SCALE FOR ENLARGEMENTS
0 0.5 1 MILE

15,000 FOOT GRID BASED ON NORTH CAROLINA PLANE COORDINATE SYSTEM
MULTICOLOR PRODUCTION

098

SHEET 1 OF 3