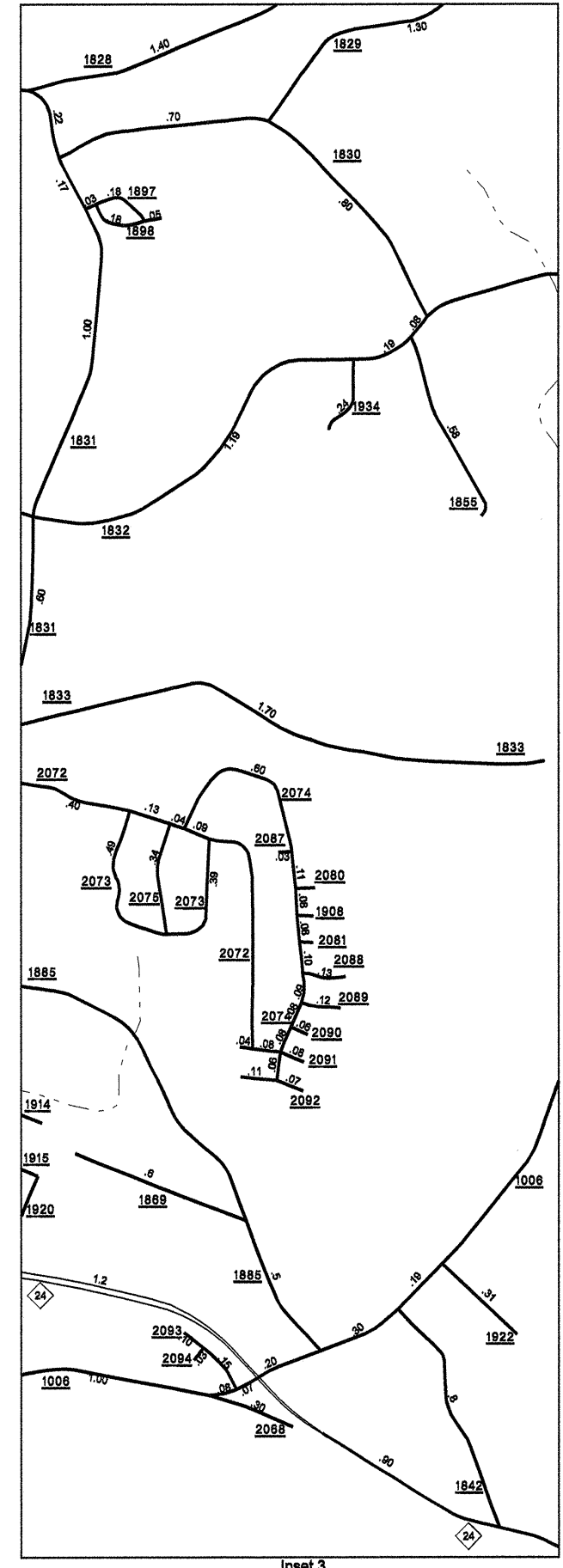


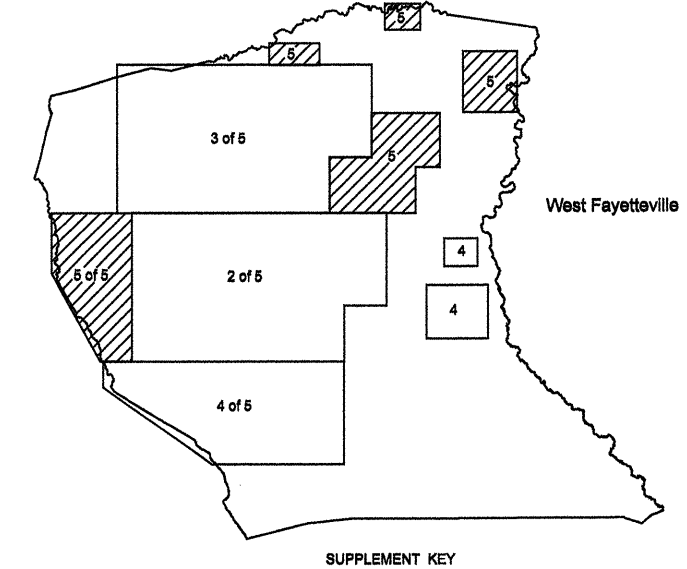
Disclaimer: The GIS Unit's goal is to provide the most accurate information as possible, the magnitude of the data prevents any guarantee of accuracy or completeness. If you find any information that is incorrect, please send your request to the GIS Unit.

CUMBERLAND COUNTY
SHEET 4
REVISED
8/20/09 MAG
8/20/09 INFO
8/1/09 JMB
10/24/09 JMB
2/2/07 JMB
8/11/07 JMB
7/20/07 JMB
8/23/07 JMB
10/20/07 JMB
11/18/07 JMB

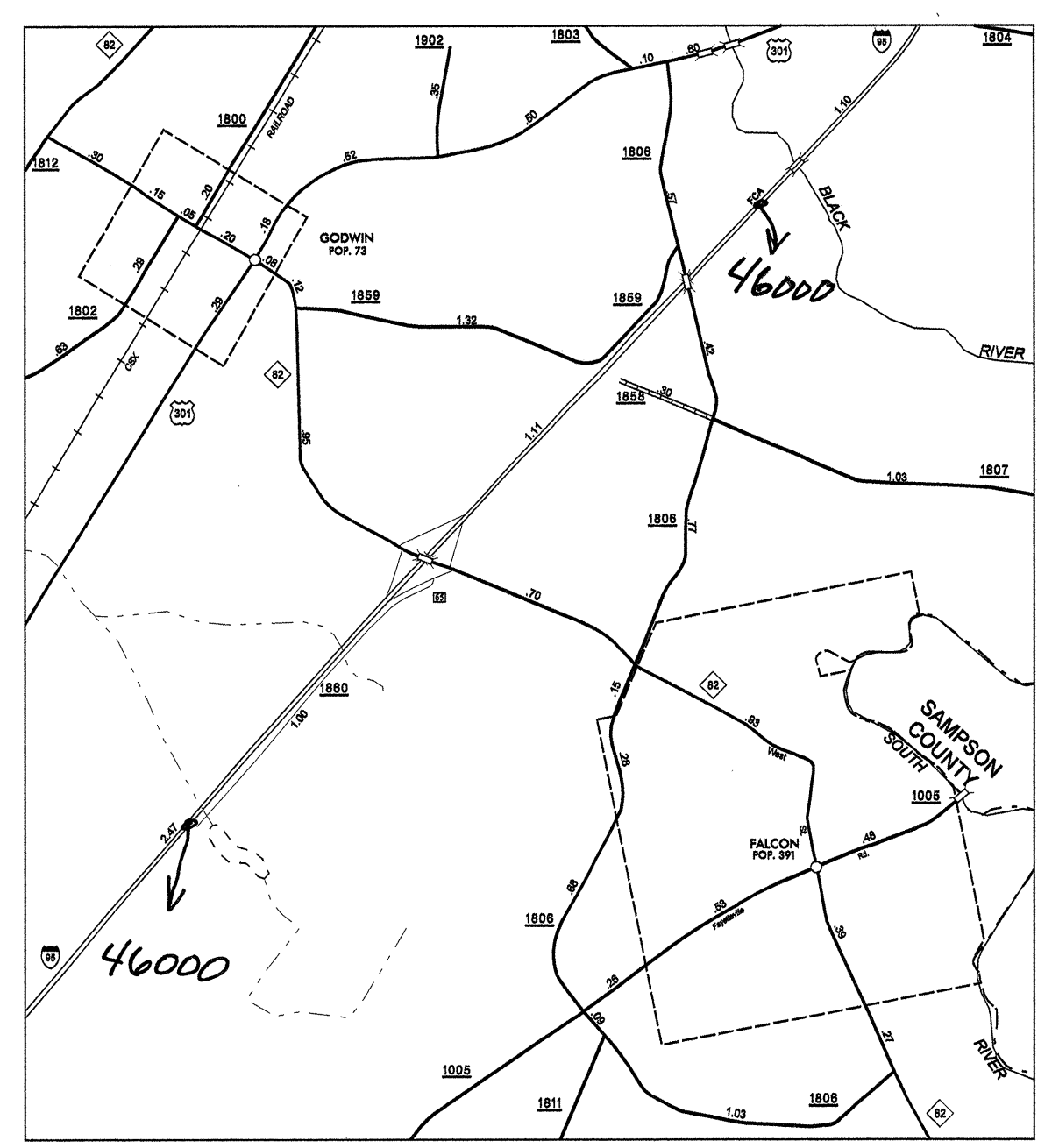
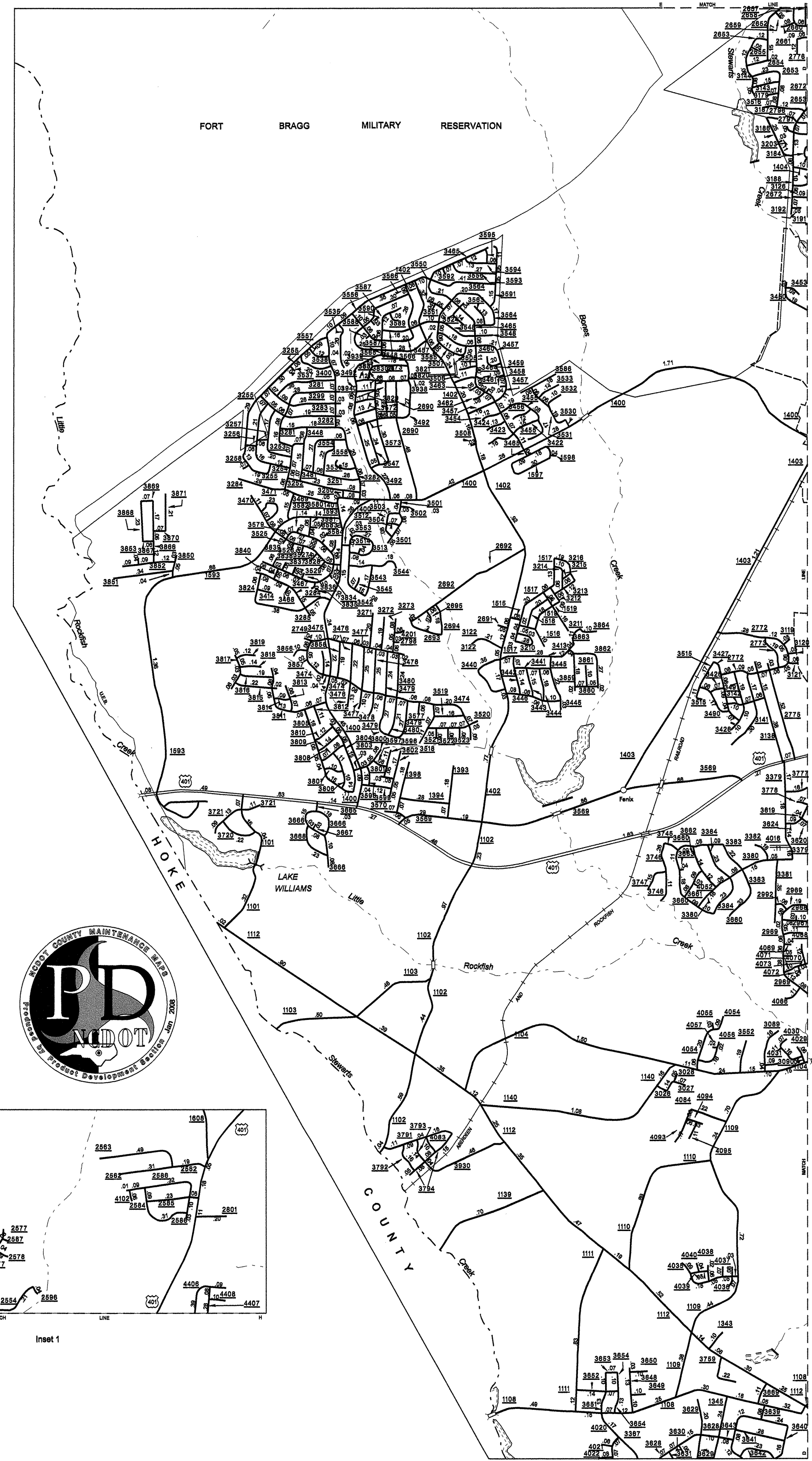
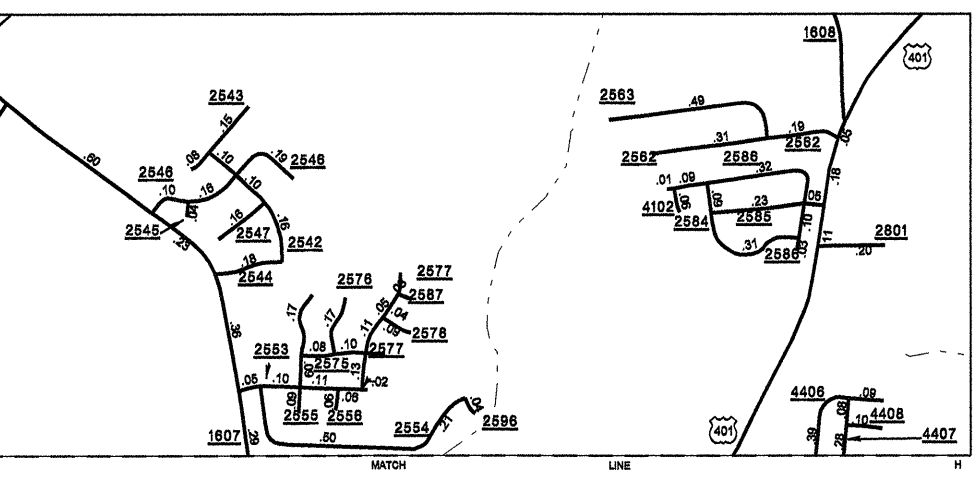
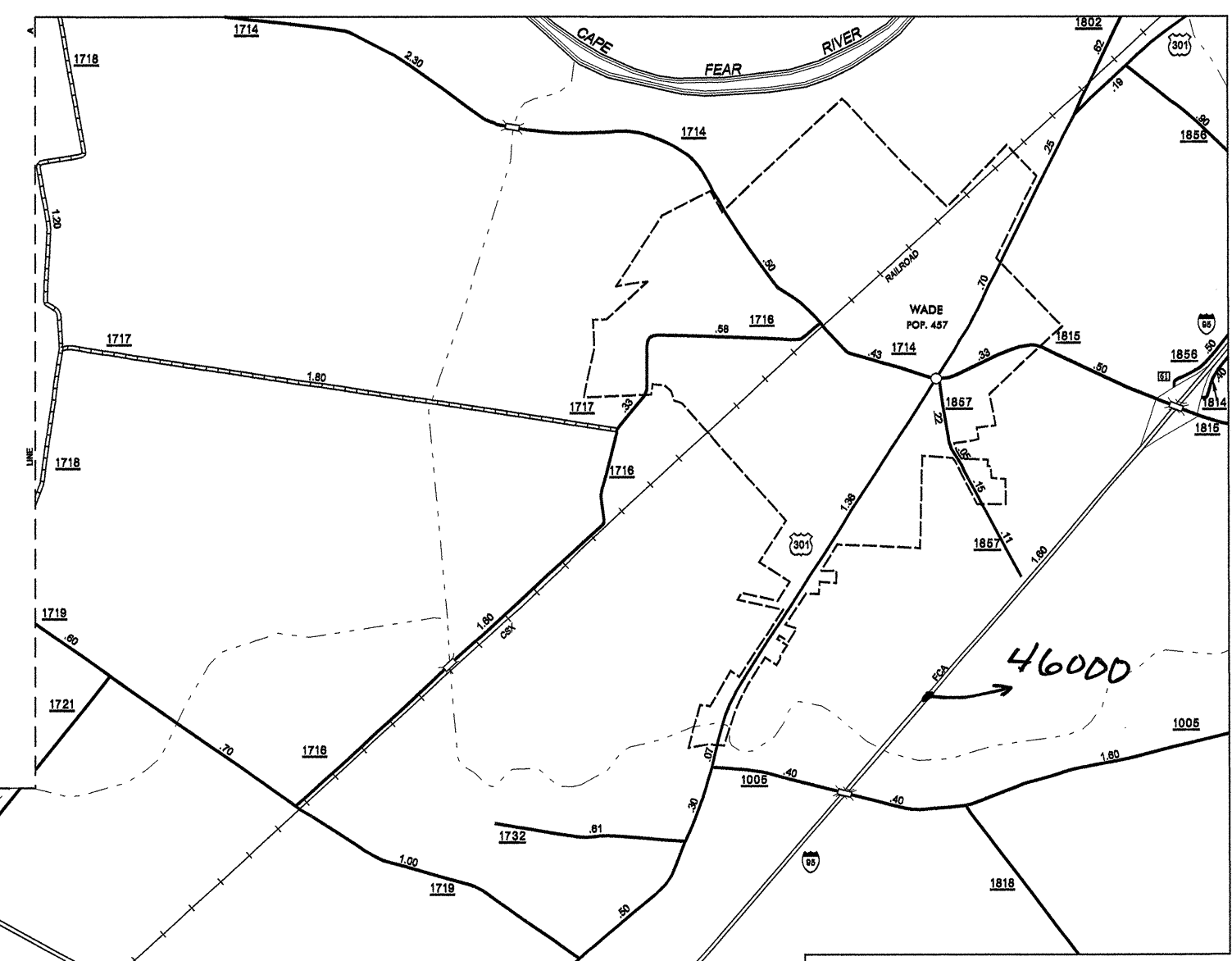


Eastover and Wade

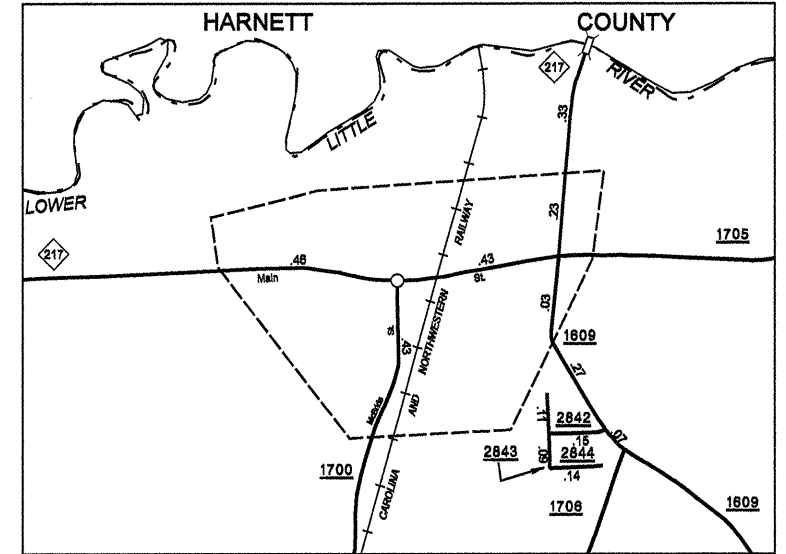
SEE:
2006 FAYETTEVILLE
URBAN MAPPING



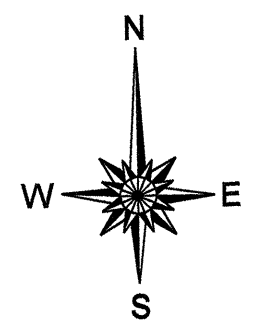
SUPPLEMENT KEY



Falcon and Godwin



Linden Pop. 170



ENLARGED MUNICIPAL AND SUBURBAN AREAS
2007 AADT
ANNUAL AVERAGE DAILY TRAFFIC
CUMBERLAND COUNTY
NORTH CAROLINA
GENERATED BY THE
TRAFFIC SURVEY GROUP
TRANSPORTATION PLANNING BRANCH
PREPARED BY THE
NORTH CAROLINA DEPARTMENT OF TRANSPORTATION
INFORMATION TECHNOLOGY - IMG UNIT
IN COOPERATION WITH THE
U.S. DEPARTMENT OF TRANSPORTATION
FEDERAL HIGHWAY ADMINISTRATION

