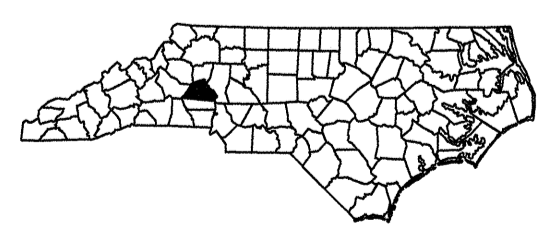
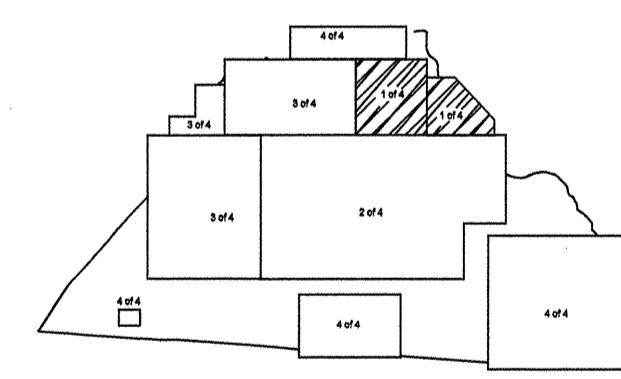
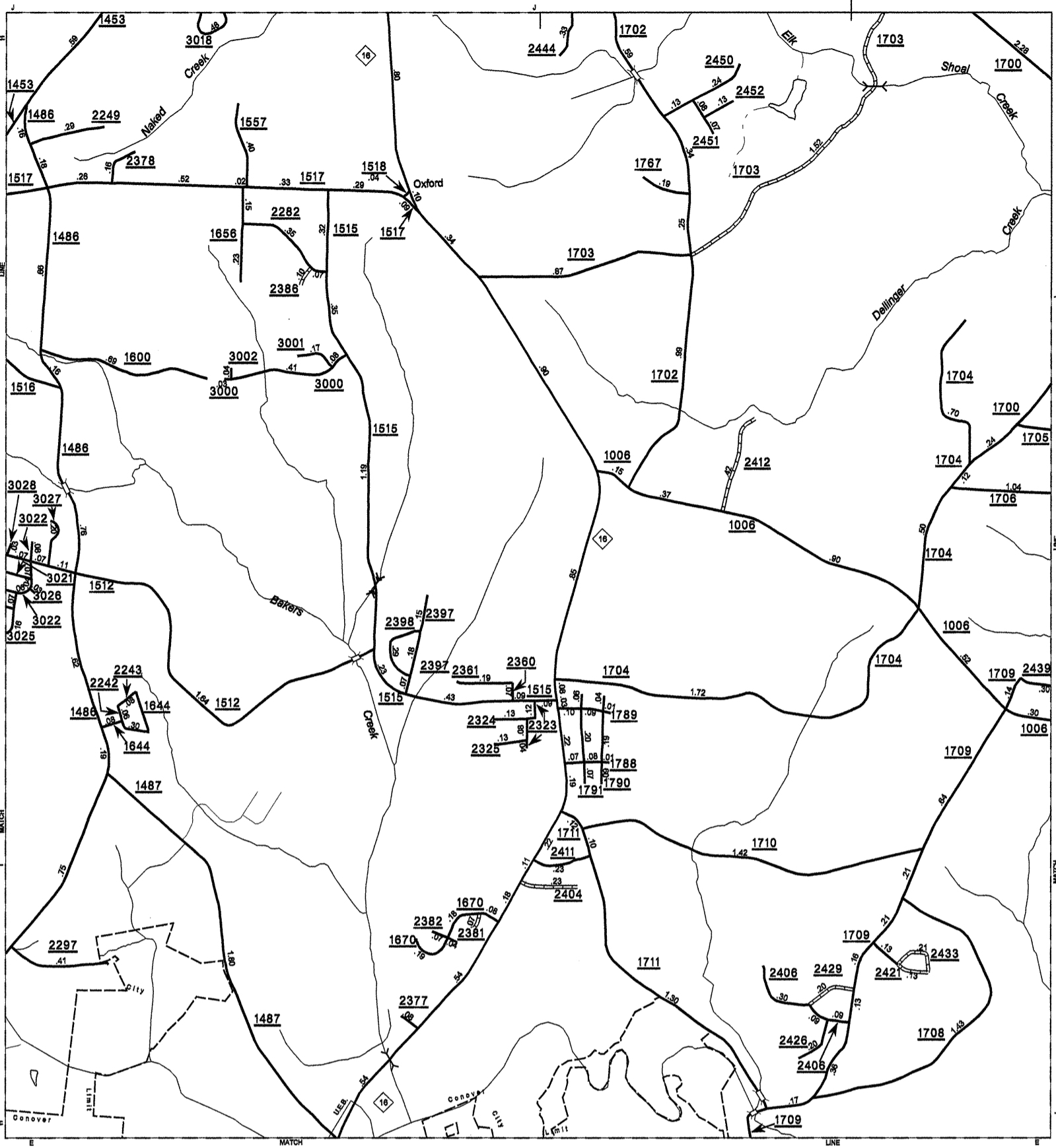


Disclaimer: The IMG Unit's goal is to provide the most accurate information as possible, the magnitude of the data prevents any guarantee of accuracy or completeness. If you find any information that is incorrect, please send your request to the IMG Unit.

COPY OF THIS MAP ARE AVAILABLE AT THE ADDRESS: N.C. DEPARTMENT OF TRANSPORTATION INFORMATION TECHNOLOGY AND SERVICES DIVISION 100 EAST 10TH STREET RALEIGH, N.C. 27603

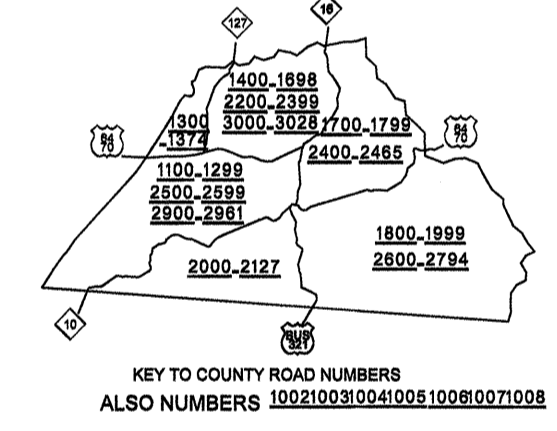
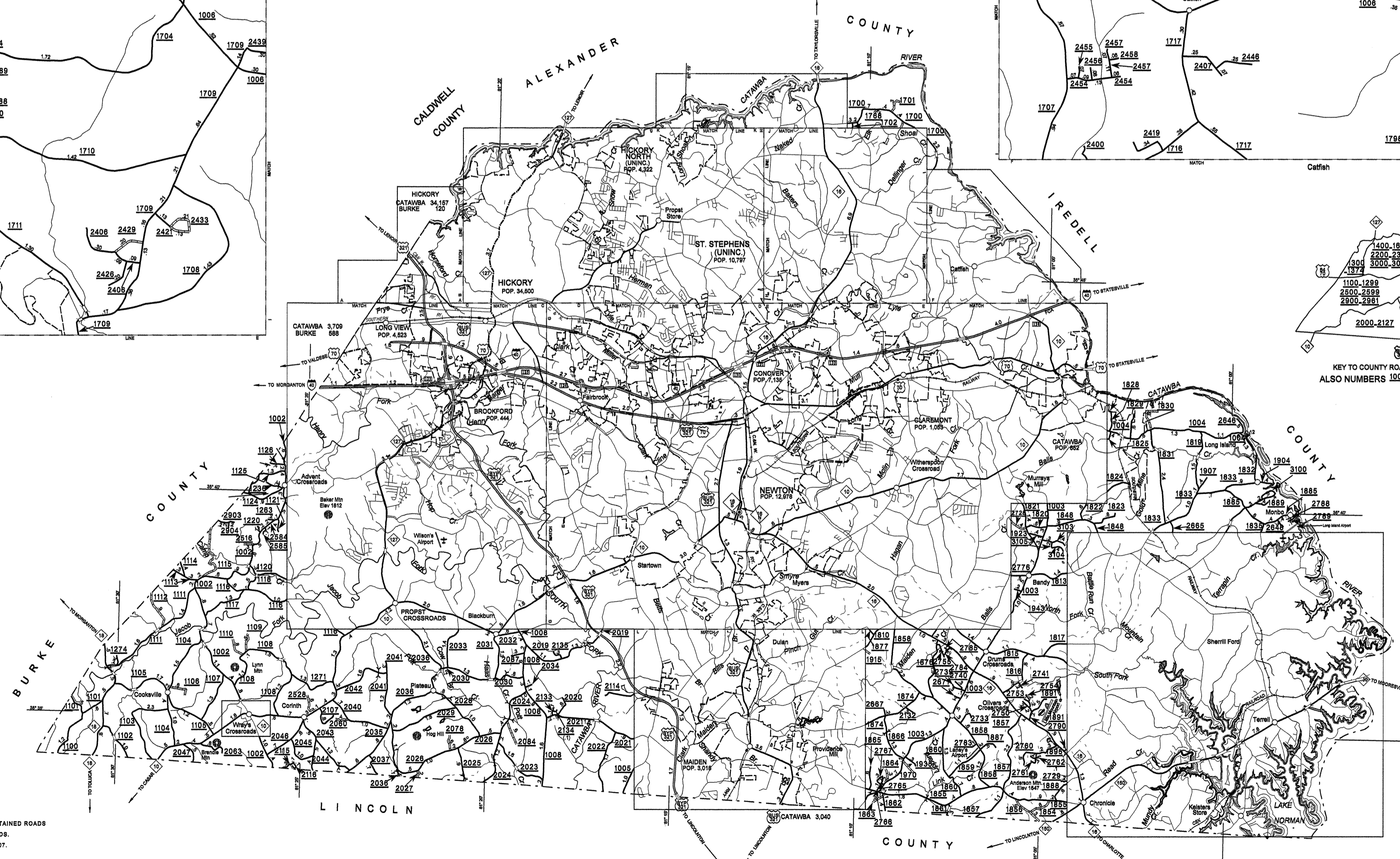
REVISED	11/17/05	BCH
	12/04/05	BCH
	03/23/07	BCH
	05/17/07	BCH
	07/27/07	BCH



County Boundary alignments are based on information provided by State and Federal agencies, and are shown in their approximate locations.

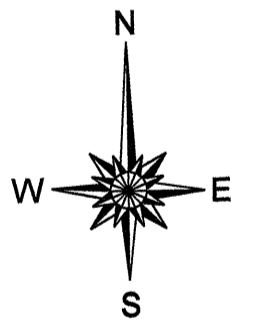
NOTE: MAP INCLUDES ONLY STATE MAINTAINED ROADS OR IMPORTANT NON-SYSTEM ROADS. ROADS SHOWN AS OF JULY 27, 2007.

SEE:  
2007 HICKORY  
URBAN MAPPING

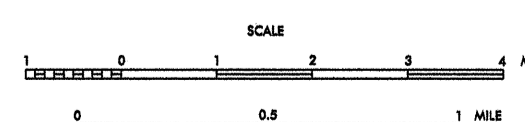


KEY TO COUNTY ROAD NUMBERS  
ALSO NUMBERS 100210031004100510060071008

- LEGEND**
- PRIMITIVE OR UNIMPROVED ROAD
  - GRADED AND DRAINED ROAD
  - SOIL GRAVEL OR STONE SURFACED ROAD
  - HARD SURFACED ROAD
  - 4 LANE UNDIVIDED HIGHWAY
  - DIVIDED HIGHWAY
  - HIGHWAY WITH FRONTAGE ROADS
  - FULL CONTROL ACCESS
  - NON-SYSTEM ROAD
  - PROJECTED LOCATION
  - INTERSECTION DISTANCE
  - TRAFFIC CIRCLE
  - HIGHWAY INTERCHANGE
  - DETAILED HIGHWAY INTERCHANGE
  - ROAD THROUGH MOUNTAIN PASS
  - HIGHWAY BRIDGE
  - UNDERPASS
  - OVERPASS
  - DRAW BRAN ON BRIDGE
  - HIGHWAY TUNNEL
  - FORD
  - INTERSTATE HIGHWAY
  - U.S. NUMBERED HIGHWAY
  - N.C. NUMBERED HIGHWAY
  - U.S. NUMBERED BICYCLE ROUTE
  - N.C. NUMBERED BICYCLE ROUTE
  - INTERSTATE INTERCHANGE NUMBER
  - SECONDARY ROAD NUMBER
  - CABLE
  - RAILROAD ANY NUMBER OF TRACKS USED BY SINGLE OPERATING COMPANY
  - RAILROAD ANY NUMBER OF TRACKS USED BY MORE THAN ONE OPERATING COMPANY ON SAME OR ADJACENT RIGHTS-OF-WAY
  - RAILROAD STATION
  - GRADE CROSSING
  - UNDERPASS
  - OVERPASS
  - RAILROAD TUNNEL
  - INSET AREA
  - URBAN EXTENSION
  - RESERVATION OR PARK BOUNDARY
  - CITY LIMIT
  - NATIONAL FOREST BOUNDARY
  - STATE FOREST BOUNDARY
  - FEDERAL GAMELAND BOUNDARY
  - STATE GAMELAND BOUNDARY
  - MILITARY RESERVATION BOUNDARY
  - COUNTY LINE
  - STATE LINE
  - INCORPORATED CITY OR VILLAGE, (GENERALIZED)
  - FERRY OR TOLL FERRY
  - CANAL
  - NARROW STREAM
  - WIDE STREAM
  - DAM WITH LOCK
  - DAM
  - RESERVOIR, POND, OR LAKE
  - COMMUNITY AND TOWN CENTER
  - COUNTY SEAT
  - SCHOOL
  - COLLEGE OR UNIVERSITY
  - HOSPITAL
  - CHURCH WITH CEMETERY
  - CEMETERY
  - PATROL STATION
  - CORRECTIONAL OR PENAL INSTN.
  - HIGHWAY GARAGE OR MAINT. YARD
  - HIGHWAY DIV. OR DIST. OFFICE
  - WEIGHT STATION
  - MONUMENT-SMALL HISTORICAL SITE
  - LIGHTHOUSE
  - MOUNTAIN PEAK
  - REST AREA
  - TRIANGULATION STATION
  - COAST GUARD STATION
  - MILITARY AIRFIELD
  - COMMERCIAL OR MUNICIPAL FIELD
  - HANGAR ON FIELD
  - LANDING STRIP
  - MARKED AUXILIARY FIELD



**2007 AADT**  
ANNUAL AVERAGE DAILY TRAFFIC  
**CATAWBA COUNTY**  
NORTH CAROLINA  
GENERATED BY THE  
**TRAFFIC SURVEY GROUP**  
TRANSPORTATION PLANNING BRANCH  
PREPARED BY THE  
**NORTH CAROLINA DEPARTMENT OF TRANSPORTATION**  
INFORMATION TECHNOLOGY - IMG UNIT  
IN COOPERATION WITH THE  
U.S. DEPARTMENT OF TRANSPORTATION  
FEDERAL HIGHWAY ADMINISTRATION



SCALE FOR ENLARGEMENTS  
10,000 FOOT GRID BASED ON NORTH CAROLINA PLANE COORDINATE SYSTEM  
POLYCONIC PROJECTION