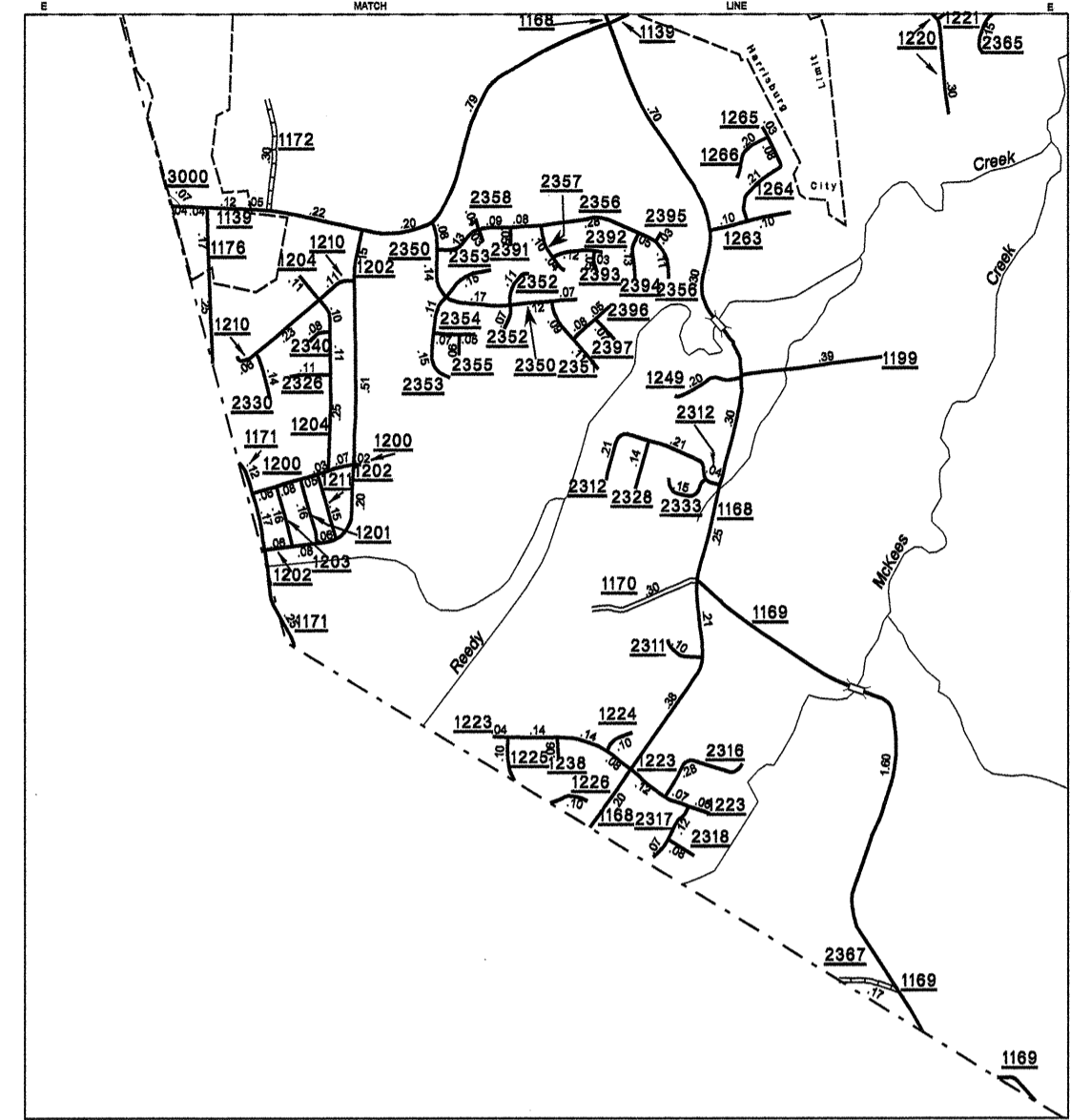


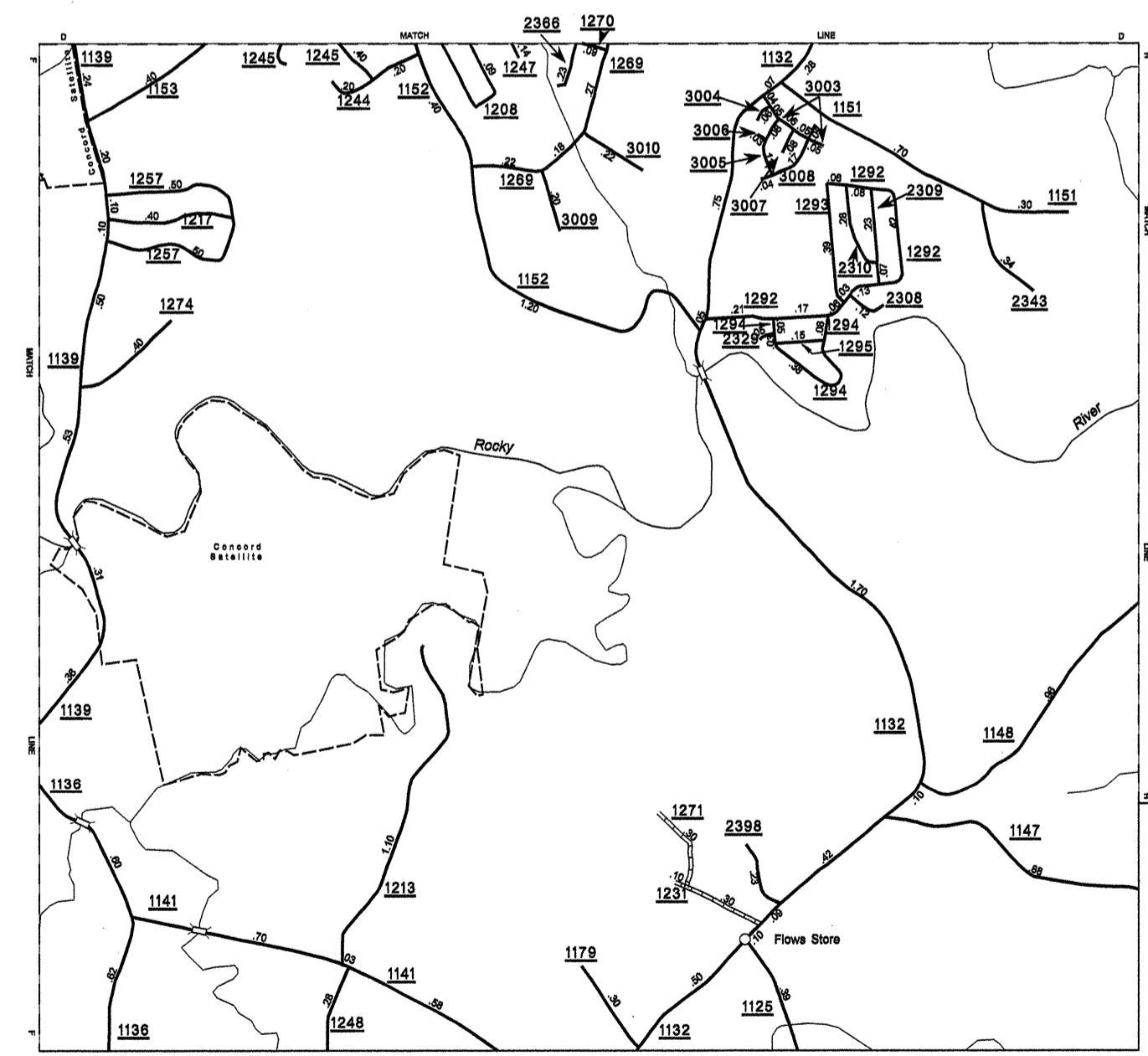
Disclaimer: The GIS user's goal is to provide the most accurate information as possible. If you find any information that is incorrect, please send your request to the GIS Unit.

COPIES OF THIS MAP ARE AVAILABLE AT THE FOLLOWING ADDRESS:  
 N.C. DEPARTMENT OF TRANSPORTATION  
 INFORMATION TECHNOLOGY AND SERVICES  
 1000 EAST 4TH STREET  
 RALEIGH, N.C. 27601

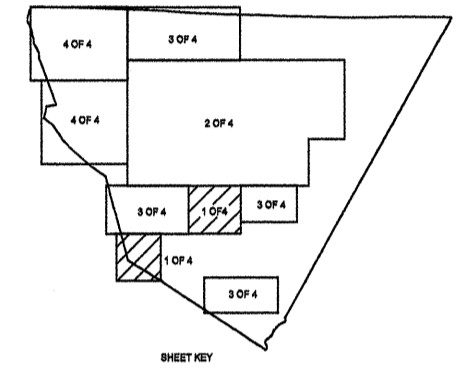
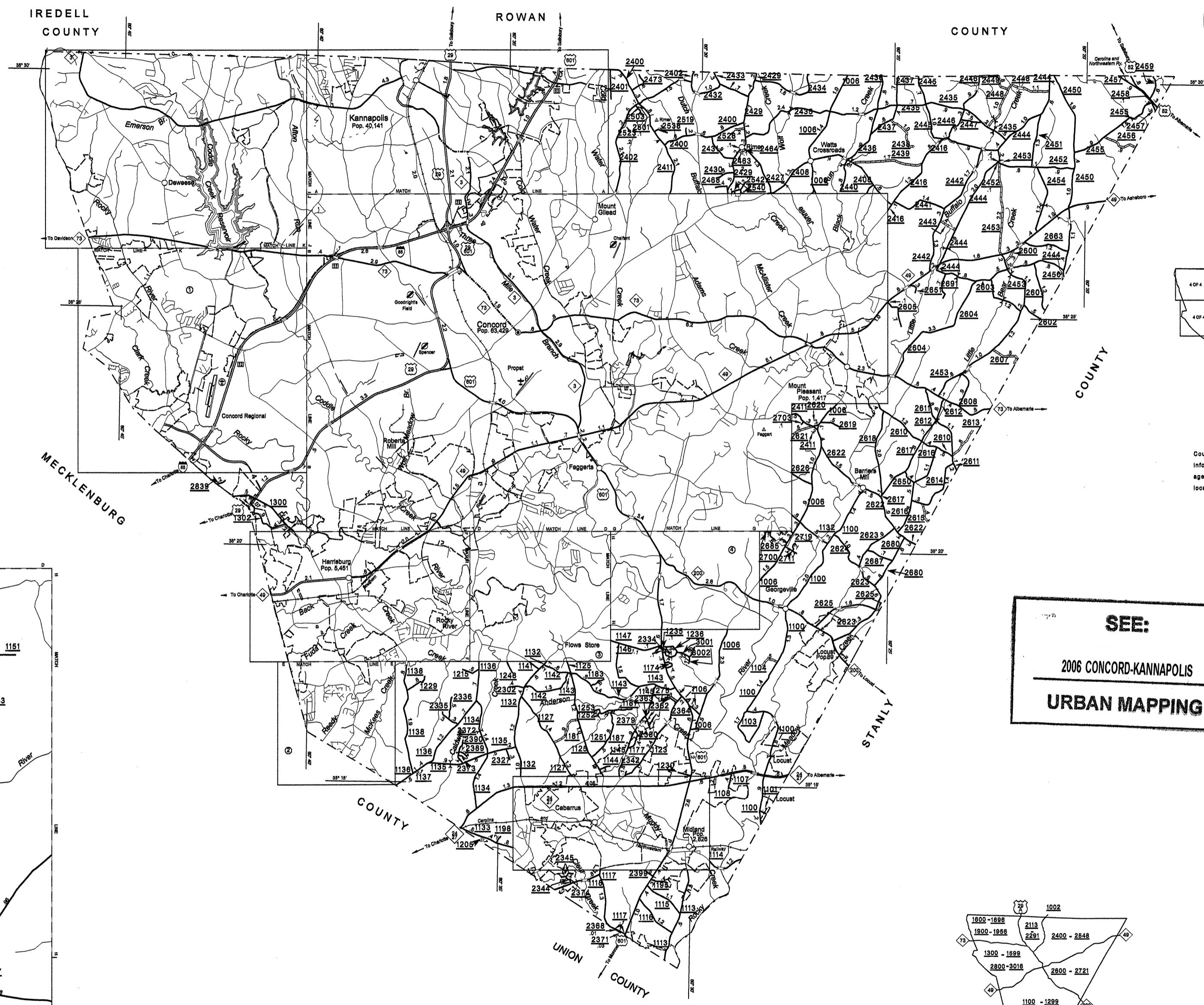
REVISED
01/13/05 VRT
03/03/05 MEM
10/18/05 MEM
05/07/06 MEM
08/07/07 MEM
11/23/07 MEM
12/27/07 MEM



Inset 2

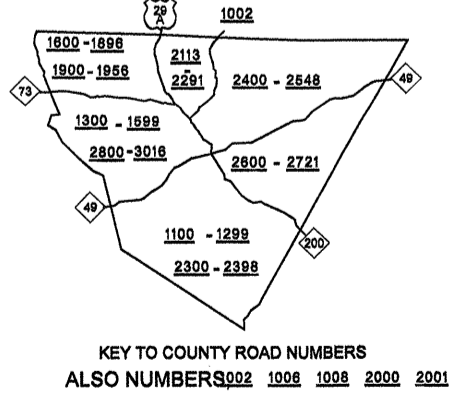


Inset 3

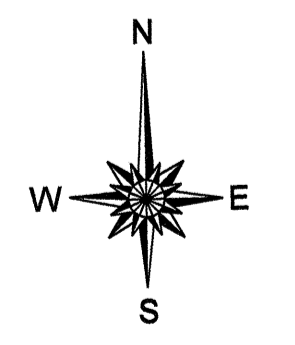


County Boundary alignments are based on information provided by State and Federal agencies, and are shown in their appropriate locations.

**SEE:**  
 2006 CONCORD-KANNAPOLIS  
 URBAN MAPPING

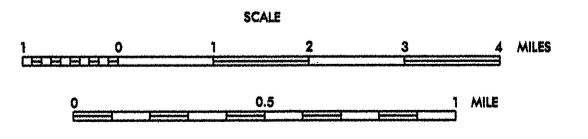


KEY TO COUNTY ROAD NUMBERS  
 ALSO NUMBERS 1002 1028 1058 2002 2021



**2007 AADT**  
 ANNUAL AVERAGE DAILY TRAFFIC  
**CABARRUS COUNTY**  
 NORTH CAROLINA  
 GENERATED BY THE  
**TRAFFIC SURVEY GROUP**  
 TRANSPORTATION PLANNING BRANCH

PREPARED BY THE  
 NORTH CAROLINA DEPARTMENT OF TRANSPORTATION  
 INFORMATION TECHNOLOGY - IMG UNIT  
 IN COOPERATION WITH THE  
 U.S. DEPARTMENT OF TRANSPORTATION  
 FEDERAL HIGHWAY ADMINISTRATION



SCALE FOR ENLARGEMENTS  
 10,000 FOOT GRID BASED ON NORTH CAROLINA PLANE COORDINATE SYSTEM  
 POLYCONIC PROJECTION

NOTE: MAP INCLUDES ONLY STATE MAINTAINED ROADS  
 OR IMPORTANT NON-SYSTEM ROADS.  
 ROADS SHOWN AS OF DEC. 27, 2007

