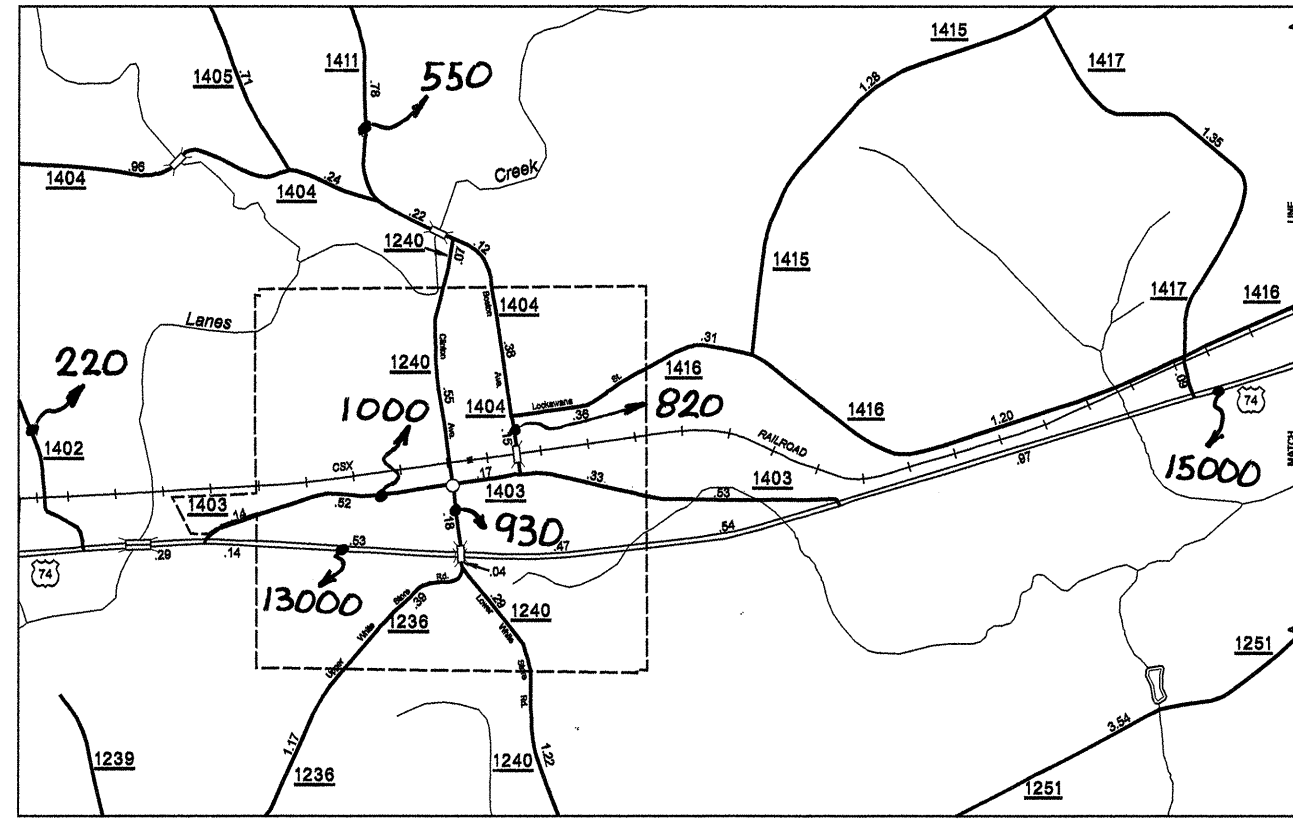
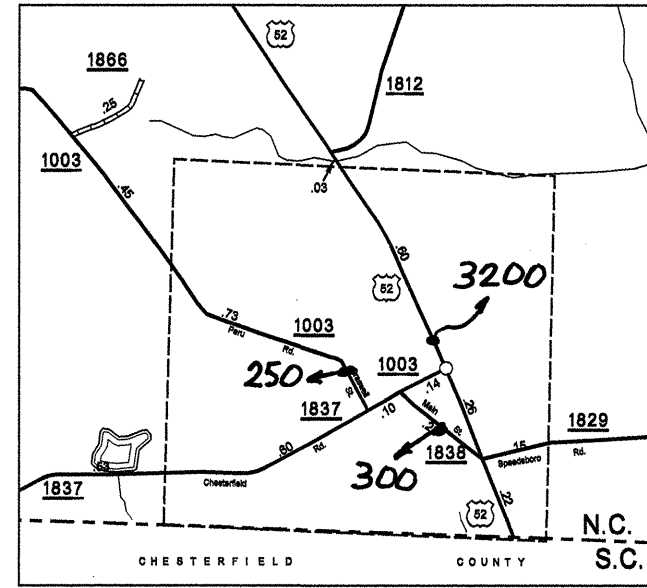


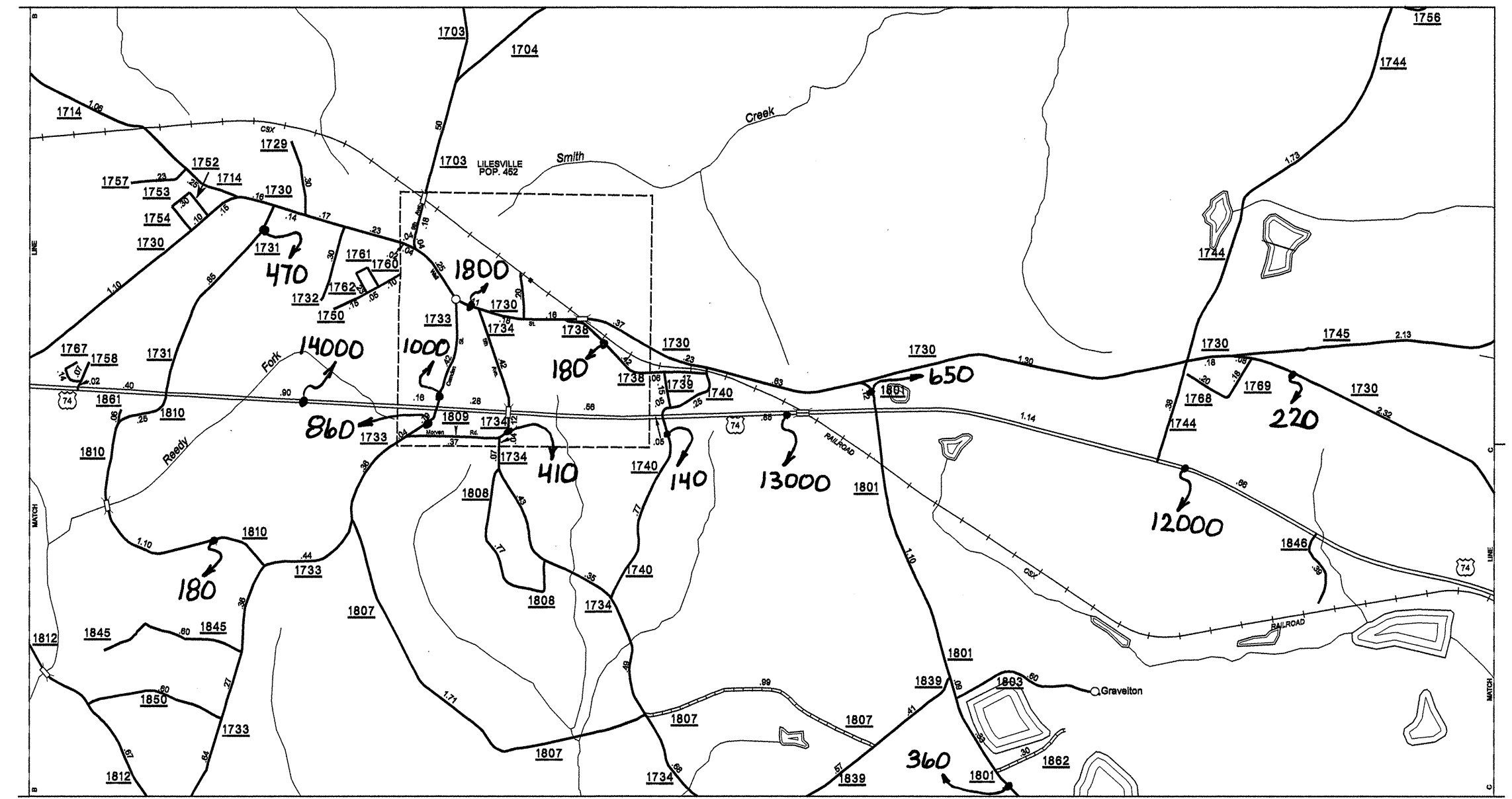
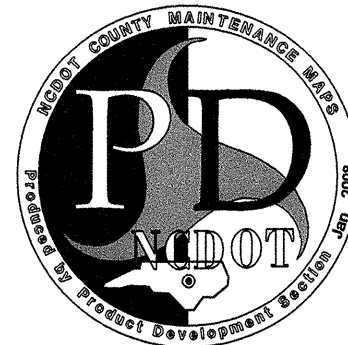
Disclaimer: The GIS Unit's goal is to provide the most accurate information as possible, the magnitude of the data prevents any guarantee of accuracy or completeness. If you find any information that is incorrect, please send your request to the GIS Unit.



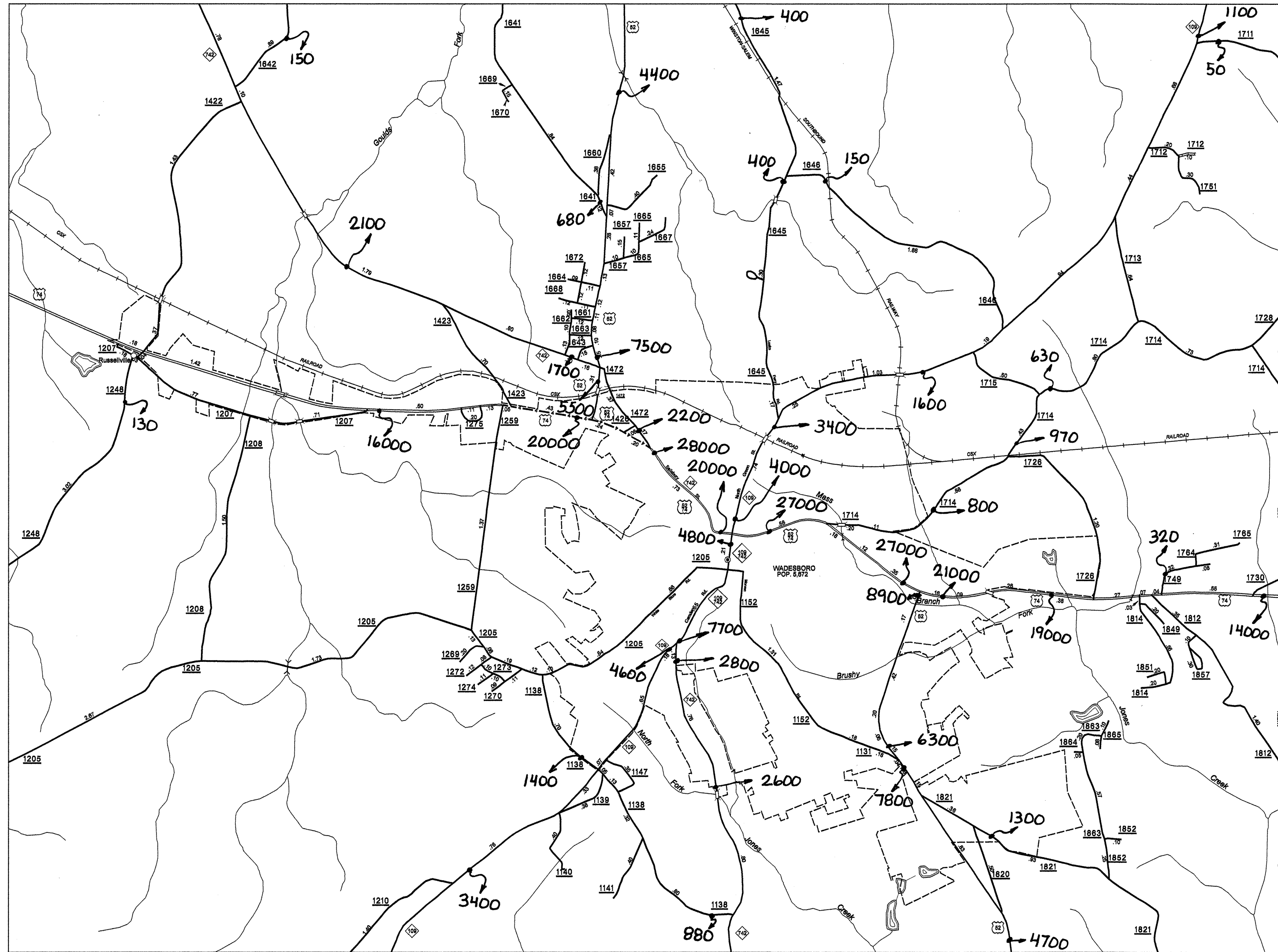
Peachland  
Pop. 576



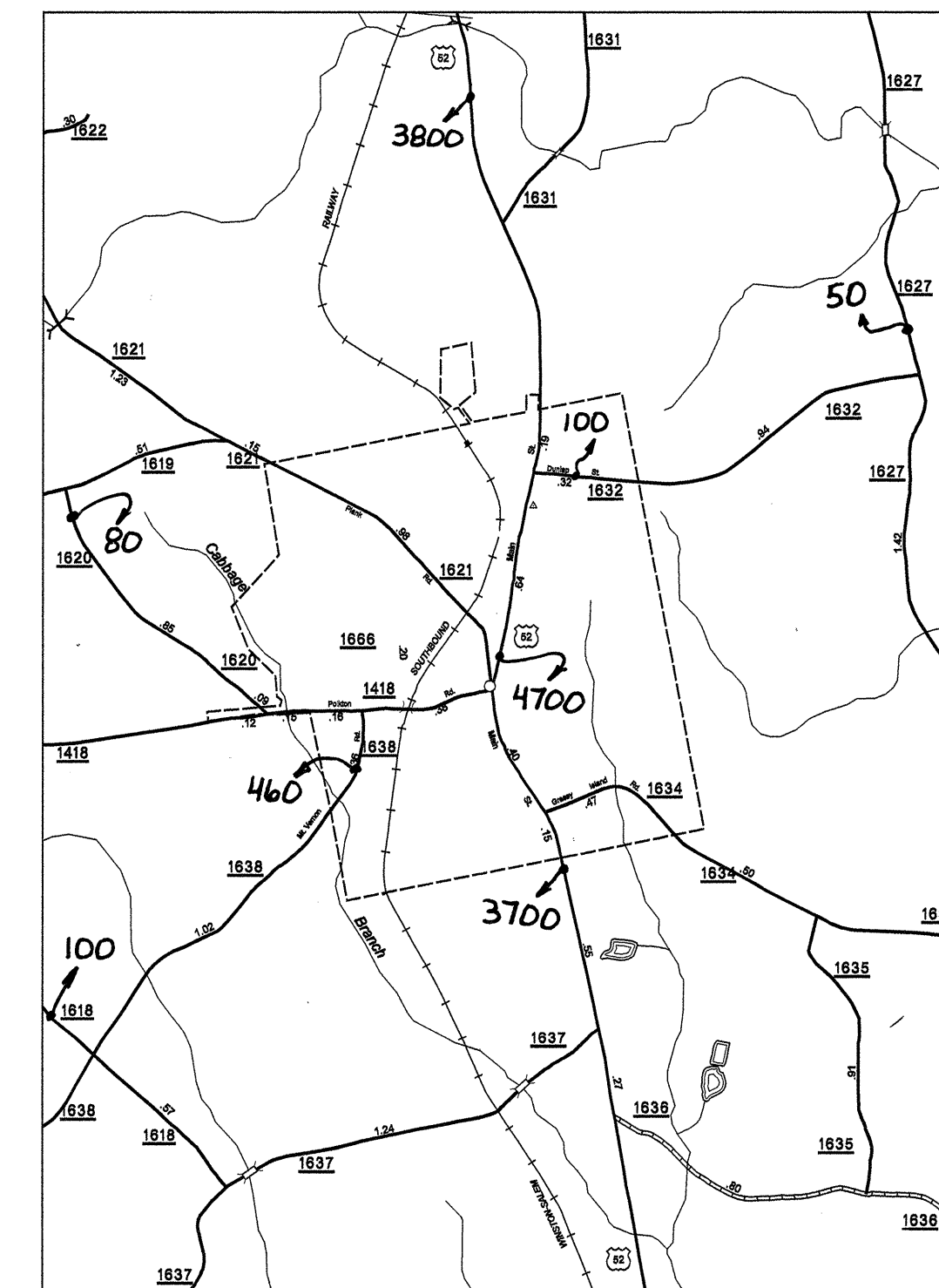
McFarlan  
Pop. 66



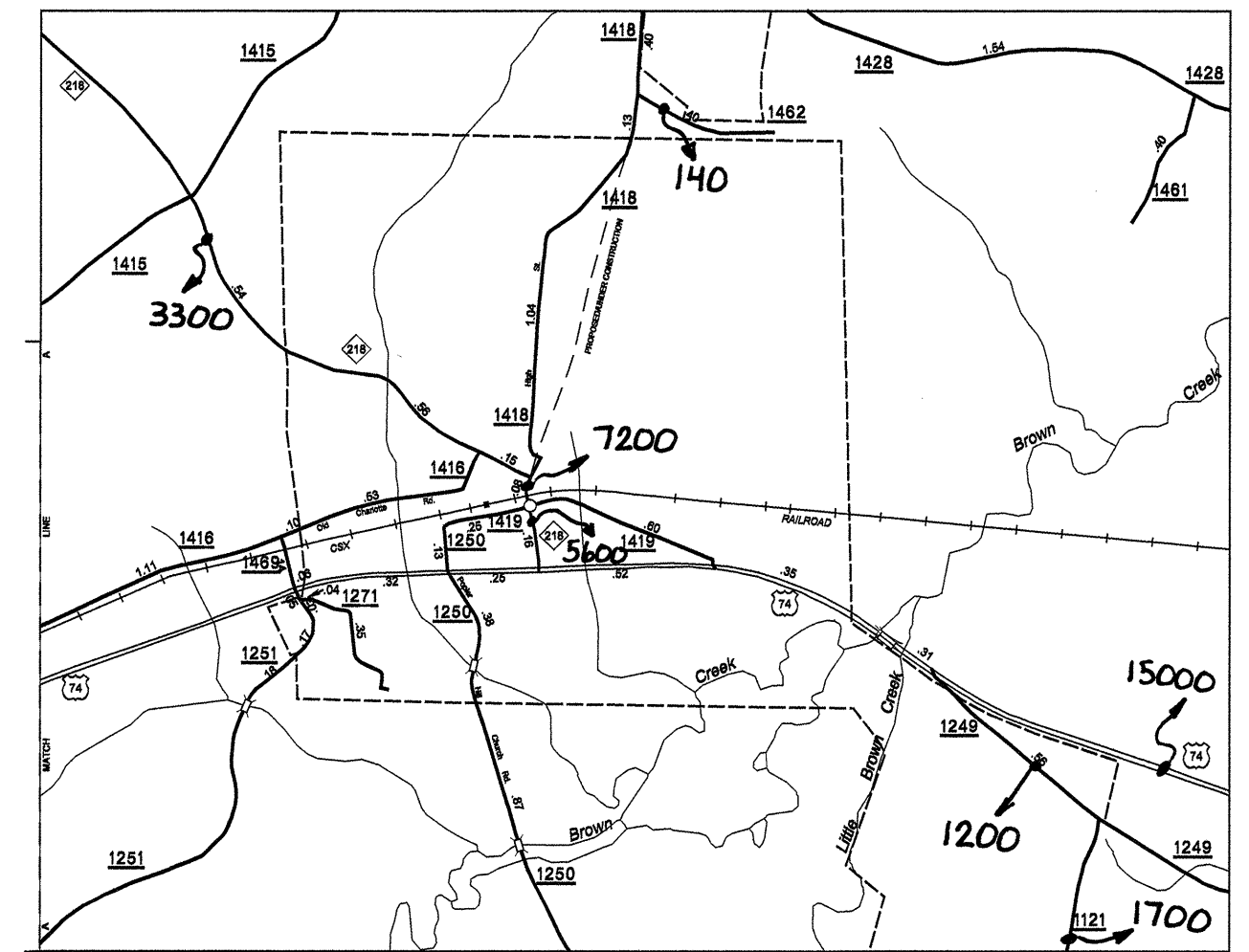
Lileville  
Pop. 447



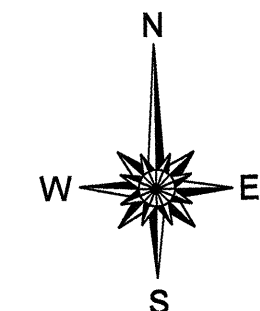
Wadeboro  
Pop. 5,872



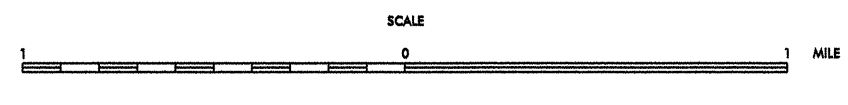
Ansonville  
Pop. 524



Polton  
Pop. 2,910



ENLARGED MUNICIPAL AND SUBURBAN AREAS  
**2007 AADT**  
 ANNUAL AVERAGE DAILY TRAFFIC  
**ANSON COUNTY**  
 NORTH CAROLINA  
 GENERATED BY THE  
**TRAFFIC SURVEY GROUP**  
 TRANSPORTATION PLANNING BRANCH  
 PREPARED BY THE  
 NORTH CAROLINA DEPARTMENT OF TRANSPORTATION  
 INFORMATION TECHNOLOGY - IMG UNIT  
 IN COOPERATION WITH THE  
 U.S. DEPARTMENT OF TRANSPORTATION  
 FEDERAL HIGHWAY ADMINISTRATION



COPIES OF THIS MAP ARE AVAILABLE  
 DIRECTLY AT ANNUAL COST:  
 1800 VRT  
 3000 VRT  
 827.00 VRT  
 1710.00 VRT  
 531.00 VRT  
 2500 VIEW  
 102000 VIEW  
 5307 VIEW  
 13007 VIEW  
 122807 VIEW