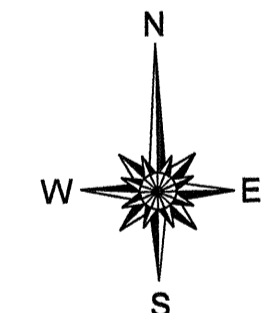
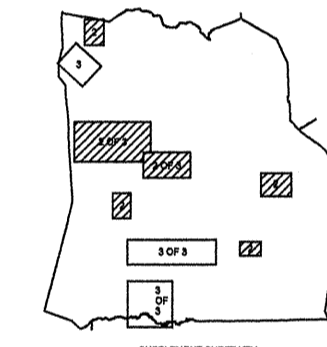
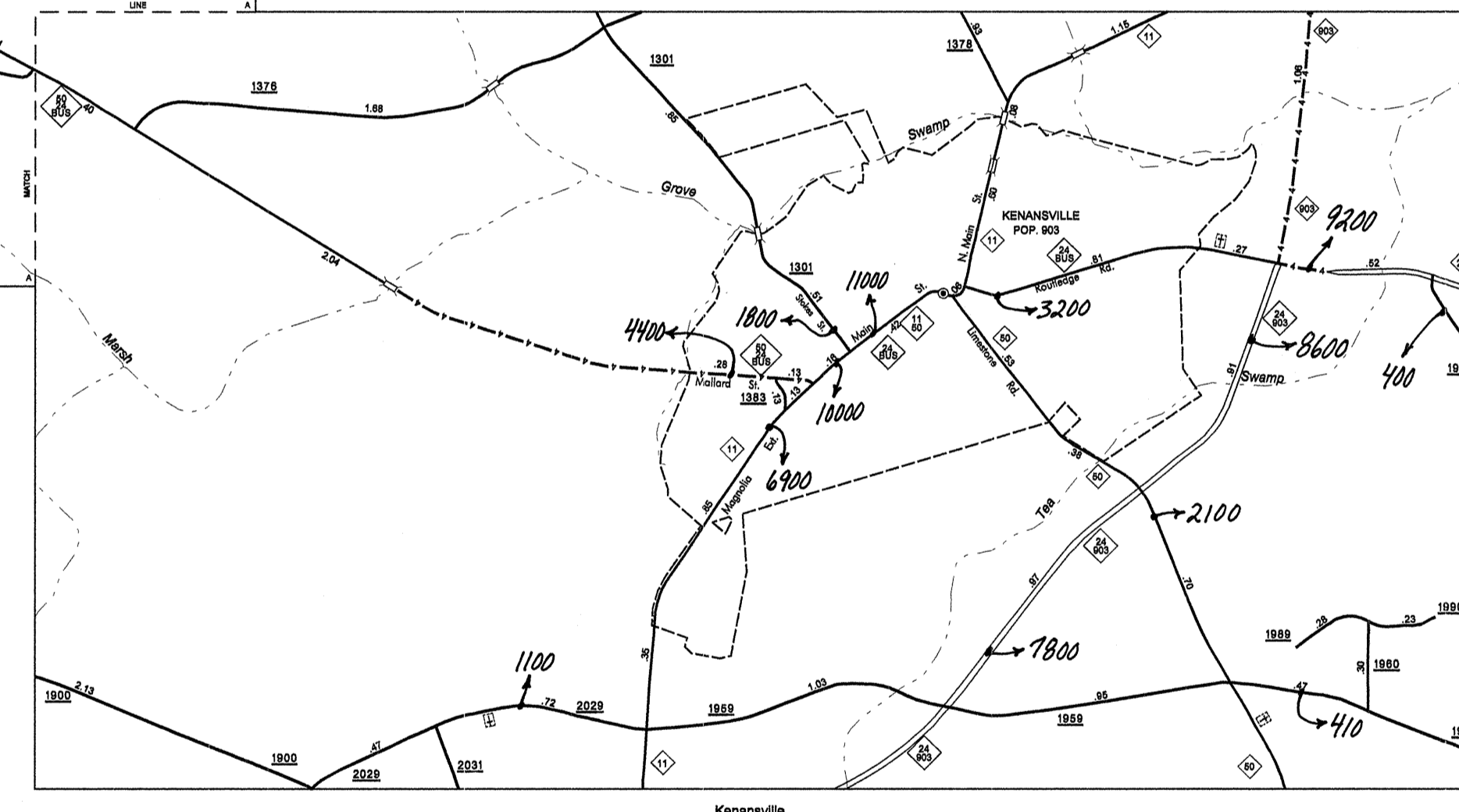
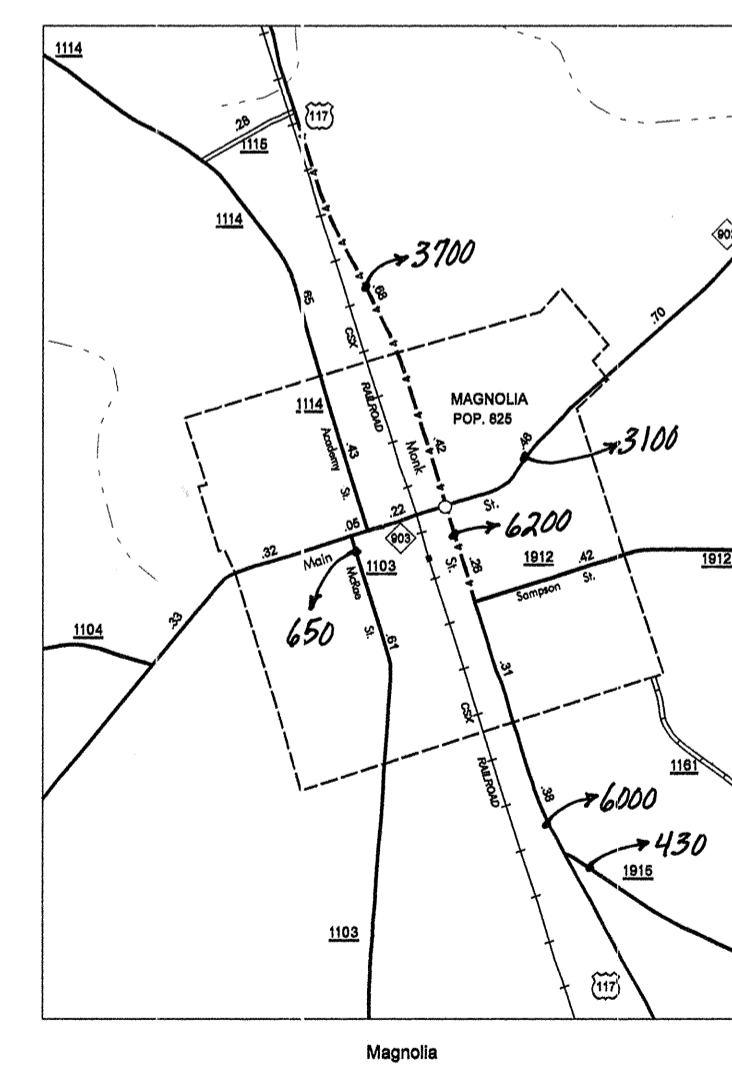
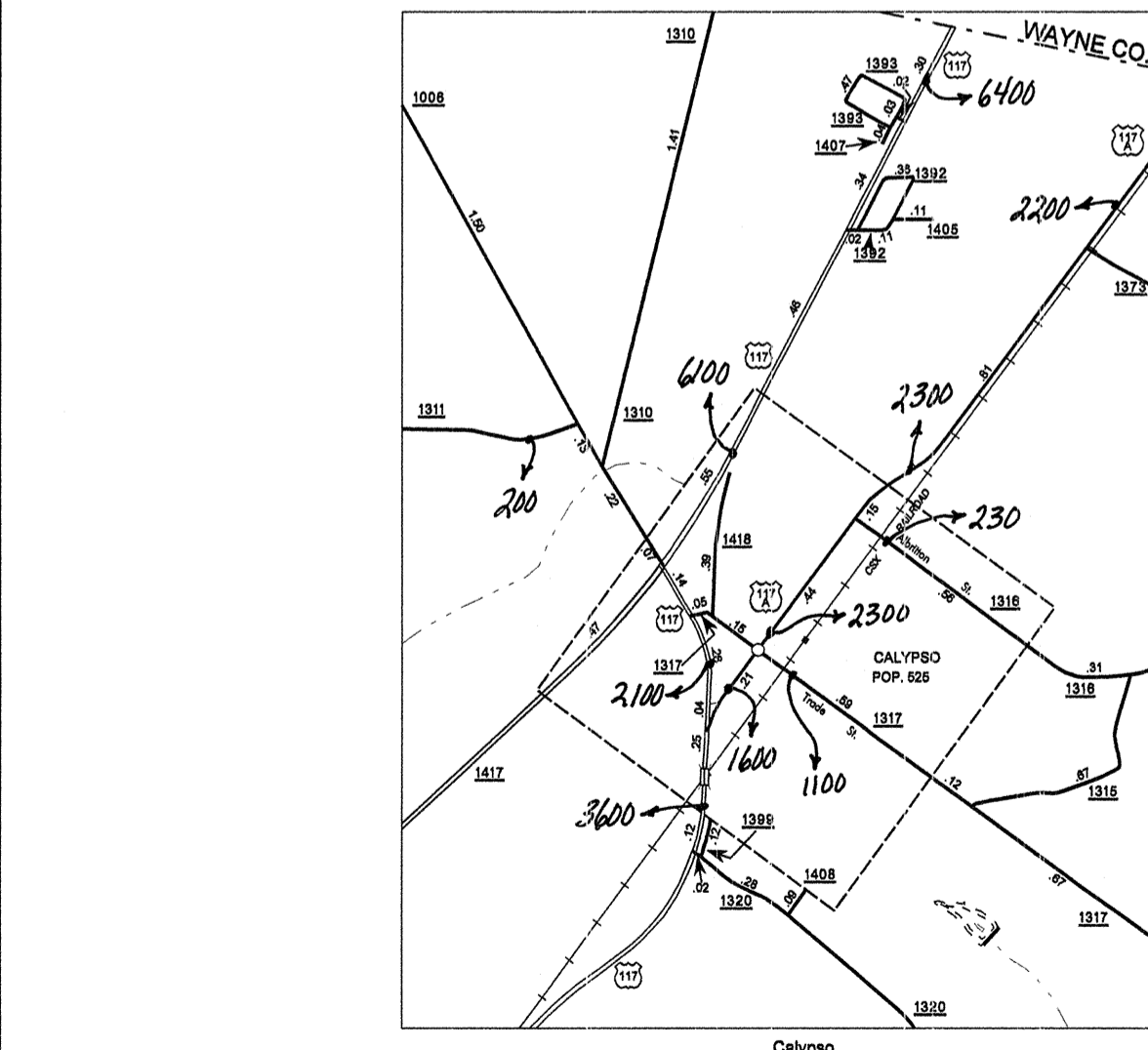
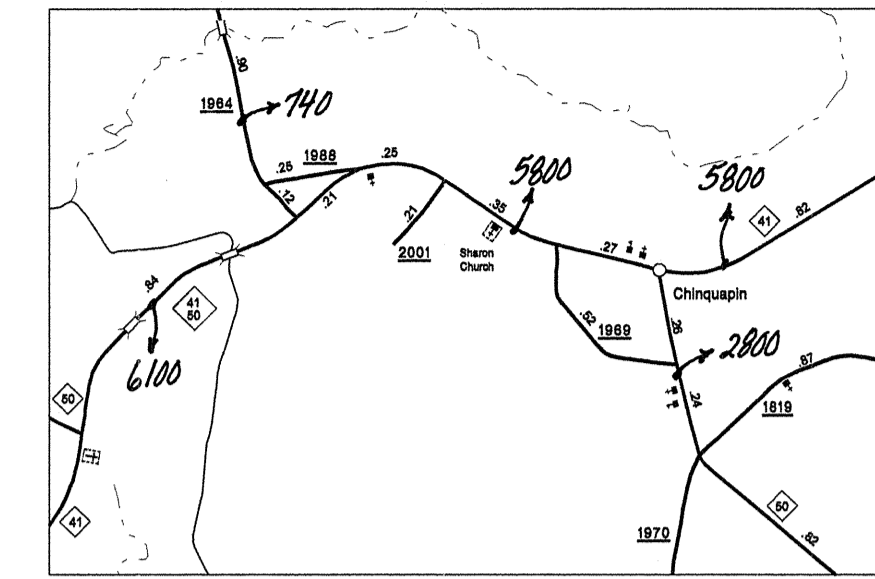
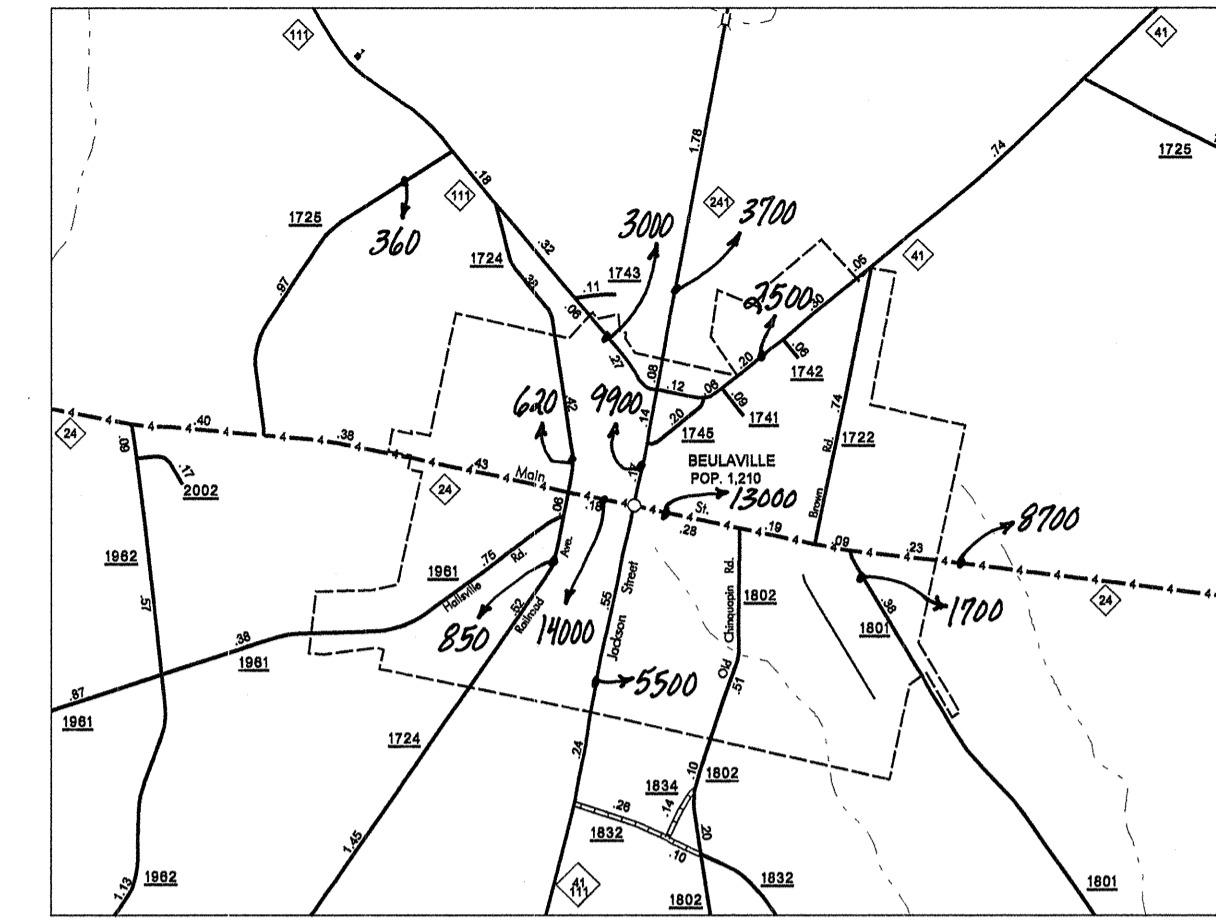
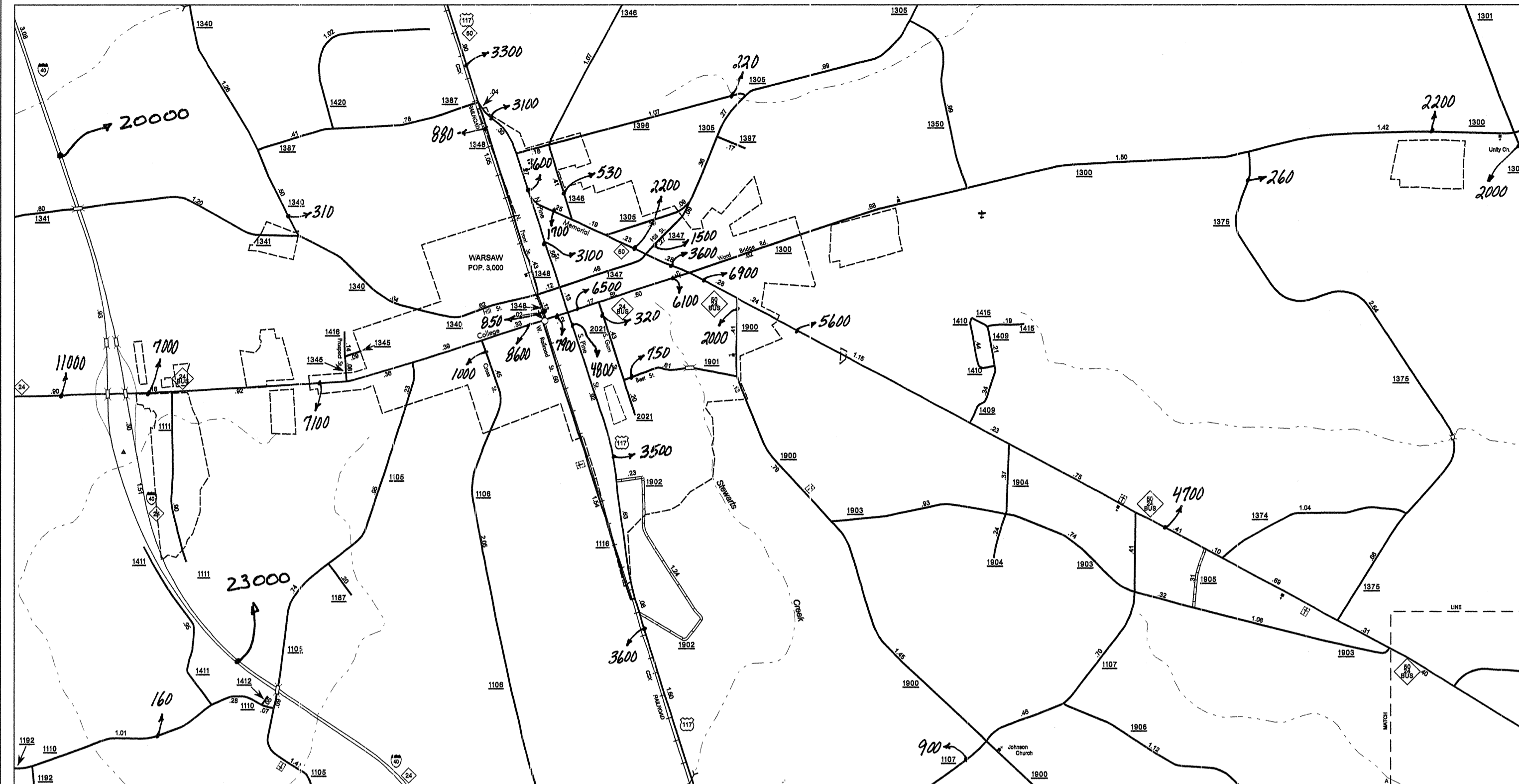


Disclaimer: The GIS Unit's goal is to provide the most accurate information as possible, the magnitude of the data presents any guarantee of accuracy or completeness. If you find any information that is incorrect, please send your request to the GIS Unit.



ENLARGED MUNICIPAL AND SUBURBAN AREAS  
**2006 AADT**  
 ANNUAL AVERAGE DAILY TRAFFIC  
**DUPLIN COUNTY**  
 NORTH CAROLINA  
 GENERATED BY THE  
**TRAFFIC SURVEY GROUP**  
 TRANSPORTATION PLANNING BRANCH  
 PREPARED BY THE  
 NORTH CAROLINA DEPARTMENT OF TRANSPORTATION  
 INFORMATION TECHNOLOGY - GIS UNIT  
 IN COOPERATION WITH THE  
 U.S. DEPARTMENT OF TRANSPORTATION  
 FEDERAL HIGHWAY ADMINISTRATION



10,000 FOOT GRID BASED ON NORTH CAROLINA PLANE COORDINATE SYSTEM  
 POLYWORD-HOBSON

DUPLIN  
 SUP 1  
 COPIES OF THIS MAP ARE AVAILABLE TO THE PUBLIC AT A NOMINAL COST.  
 N.C. DEPARTMENT OF TRANSPORTATION  
 GEOGRAPHIC INFORMATION SYSTEMS  
 RALEIGH, N.C. 27611