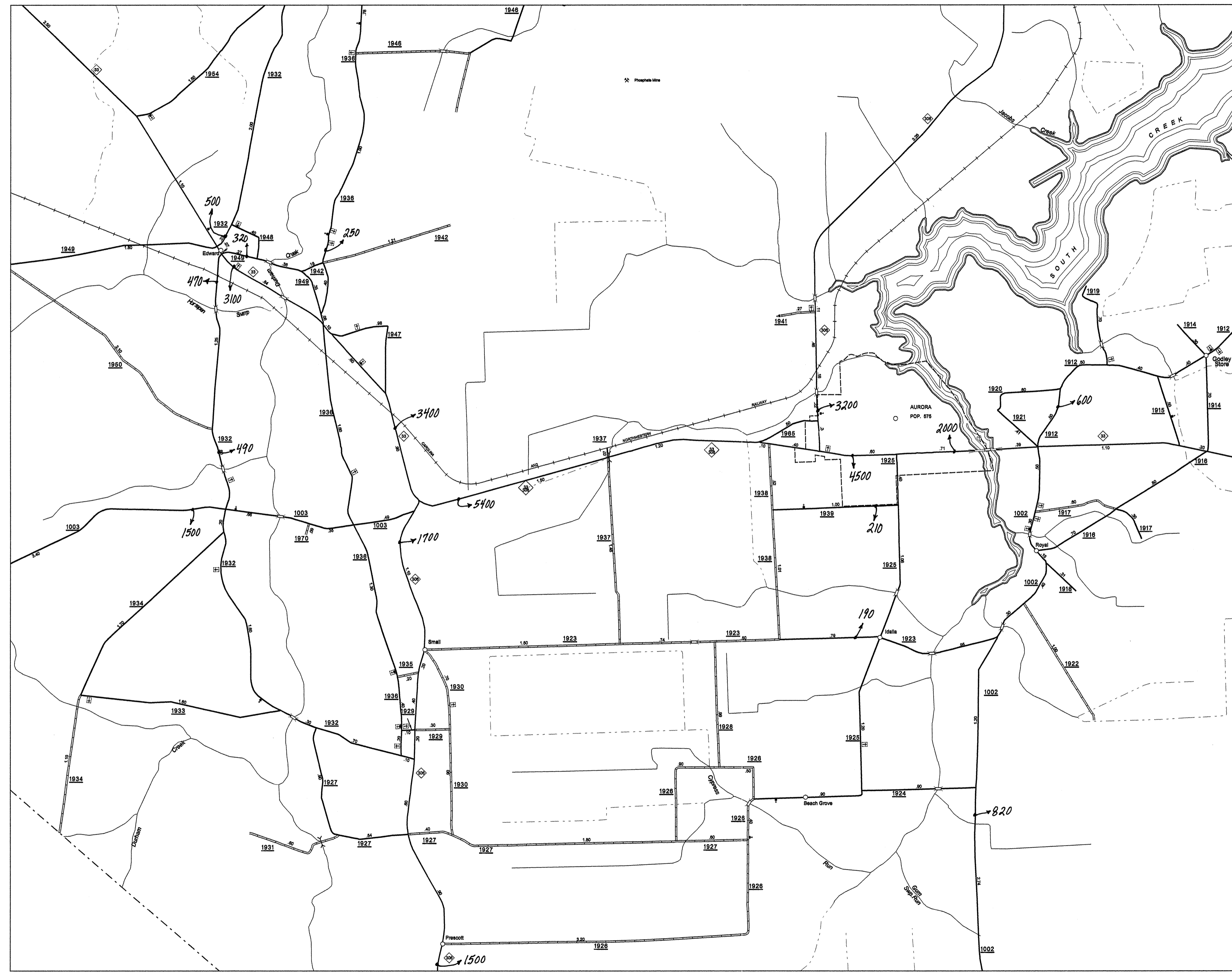


Disclaimer: The GIS Unit's goal is to provide the most accurate information as possible, the magnitude of the data prevents any guarantee of accuracy or completeness. If you find any information that is incorrect, please send your request to the GIS Unit.

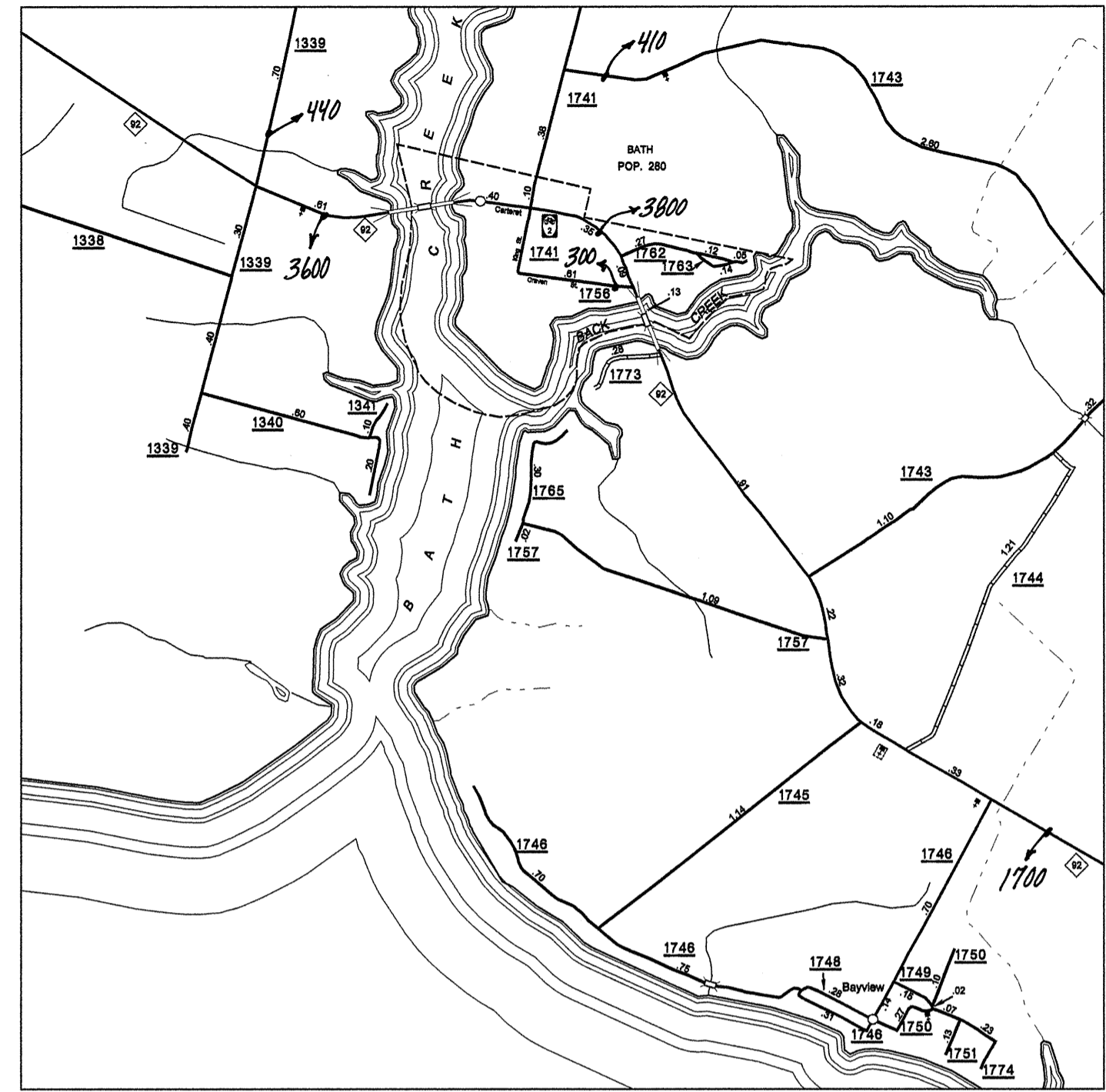
COPIES OF THIS MAP ARE AVAILABLE TO THE PUBLIC AT A MINIMAL COST. ADDRESS: NORTH CAROLINA DEPARTMENT OF TRANSPORTATION INFORMATION TECHNOLOGY - GIS UNIT 11000000 MRC 11020000 MRC

SUP 2

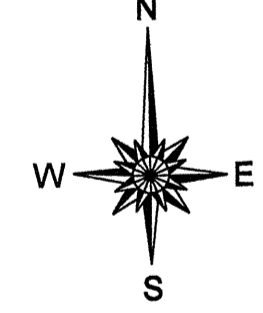
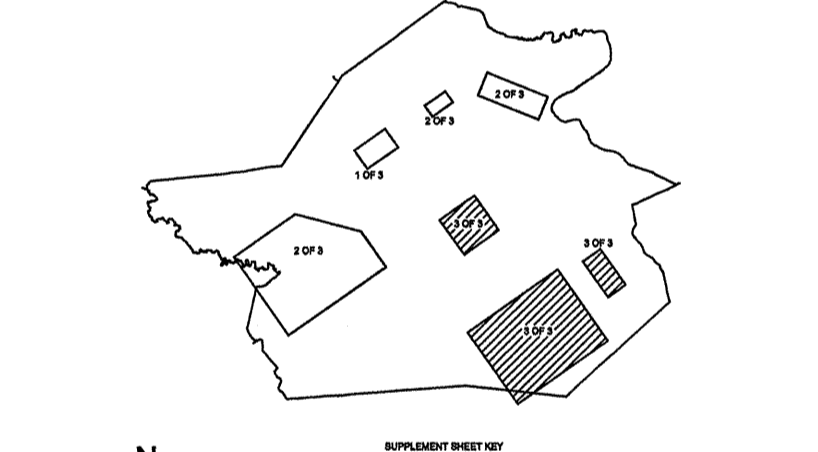
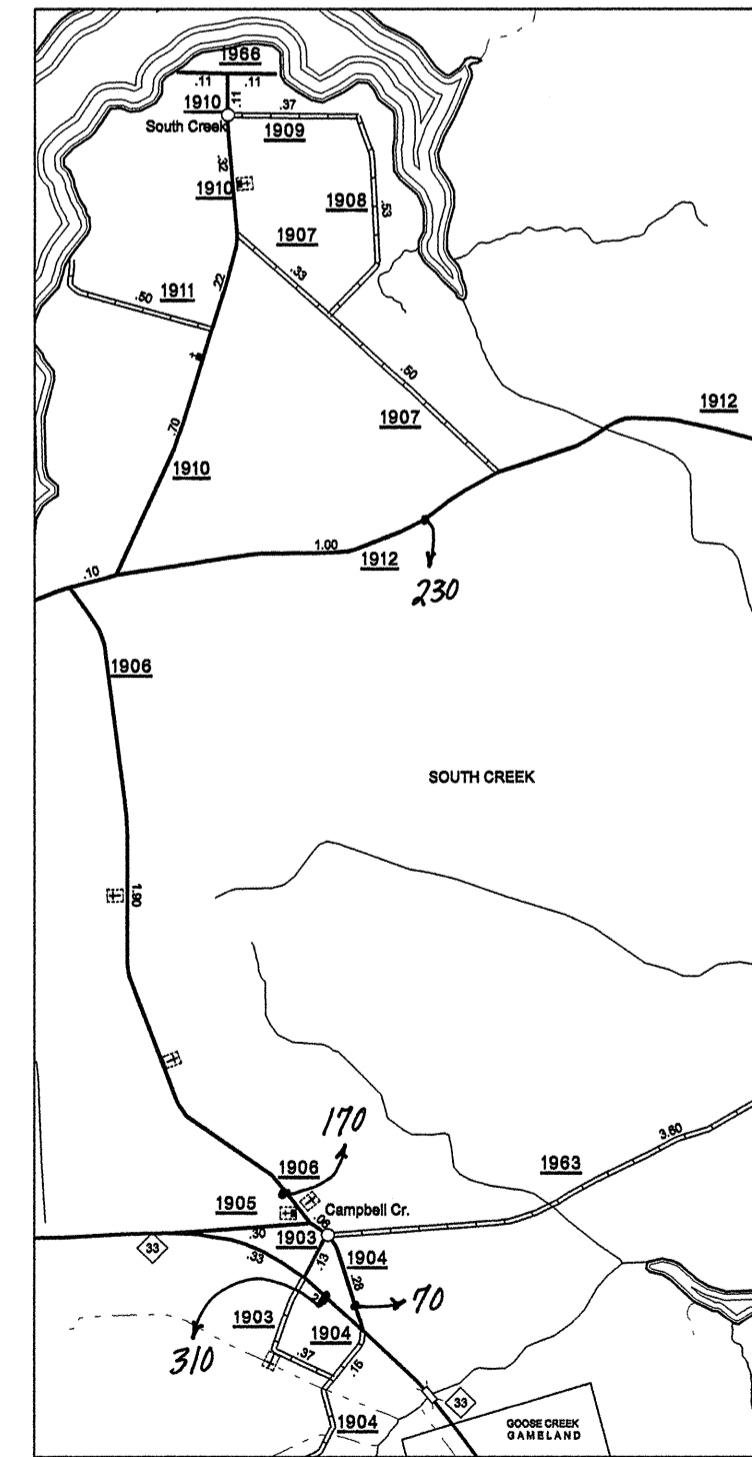
272000 MRC
273000 MRC
274000 MRC
275000 MRC
276000 MRC
277000 MRC
278000 MRC
279000 MRC
280000 MRC
281000 MRC
282000 MRC
283000 MRC
284000 MRC
285000 MRC
286000 MRC
287000 MRC
288000 MRC
289000 MRC
290000 MRC
291000 MRC
292000 MRC
293000 MRC
294000 MRC
295000 MRC
296000 MRC
297000 MRC
298000 MRC
299000 MRC
300000 MRC



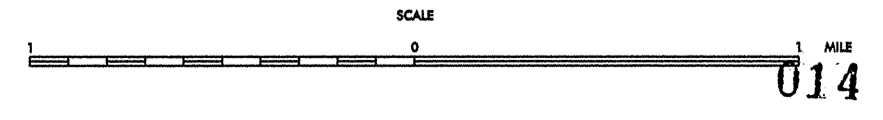
Aurora and vicinity



Bath and vicinity



ENLARGED MUNICIPAL AND SUBURBAN AREAS
2006 AADT
 ANNUAL AVERAGE DAILY TRAFFIC
BEAUFORT COUNTY
 NORTH CAROLINA
 GENERATED BY THE
TRAFFIC SURVEY GROUP
 TRANSPORTATION PLANNING BRANCH
 PREPARED BY THE
 NORTH CAROLINA DEPARTMENT OF TRANSPORTATION
 INFORMATION TECHNOLOGY - GIS UNIT
 IN COOPERATION WITH THE
 U.S. DEPARTMENT OF TRANSPORTATION
 FEDERAL HIGHWAY ADMINISTRATION



014