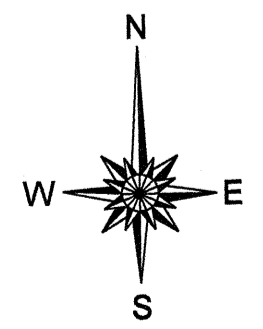
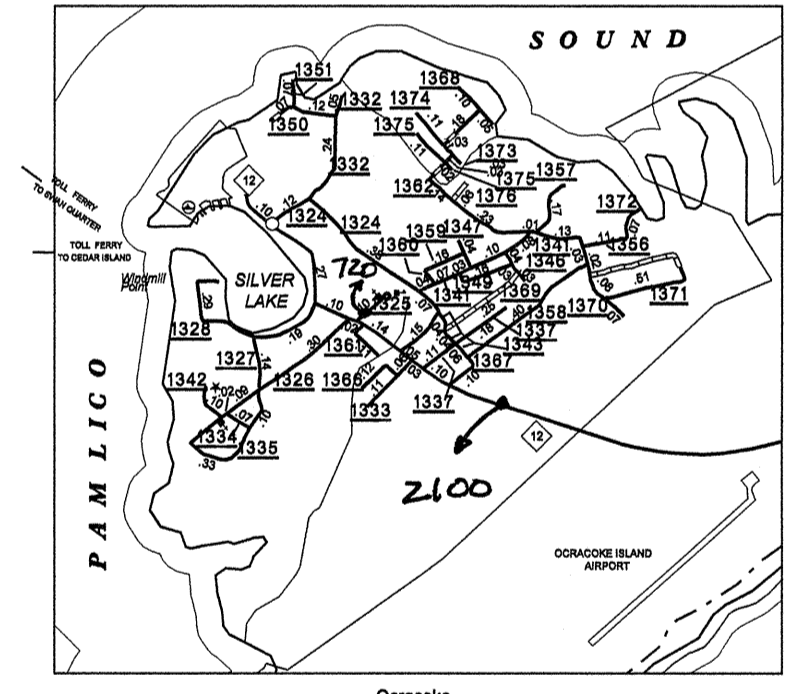
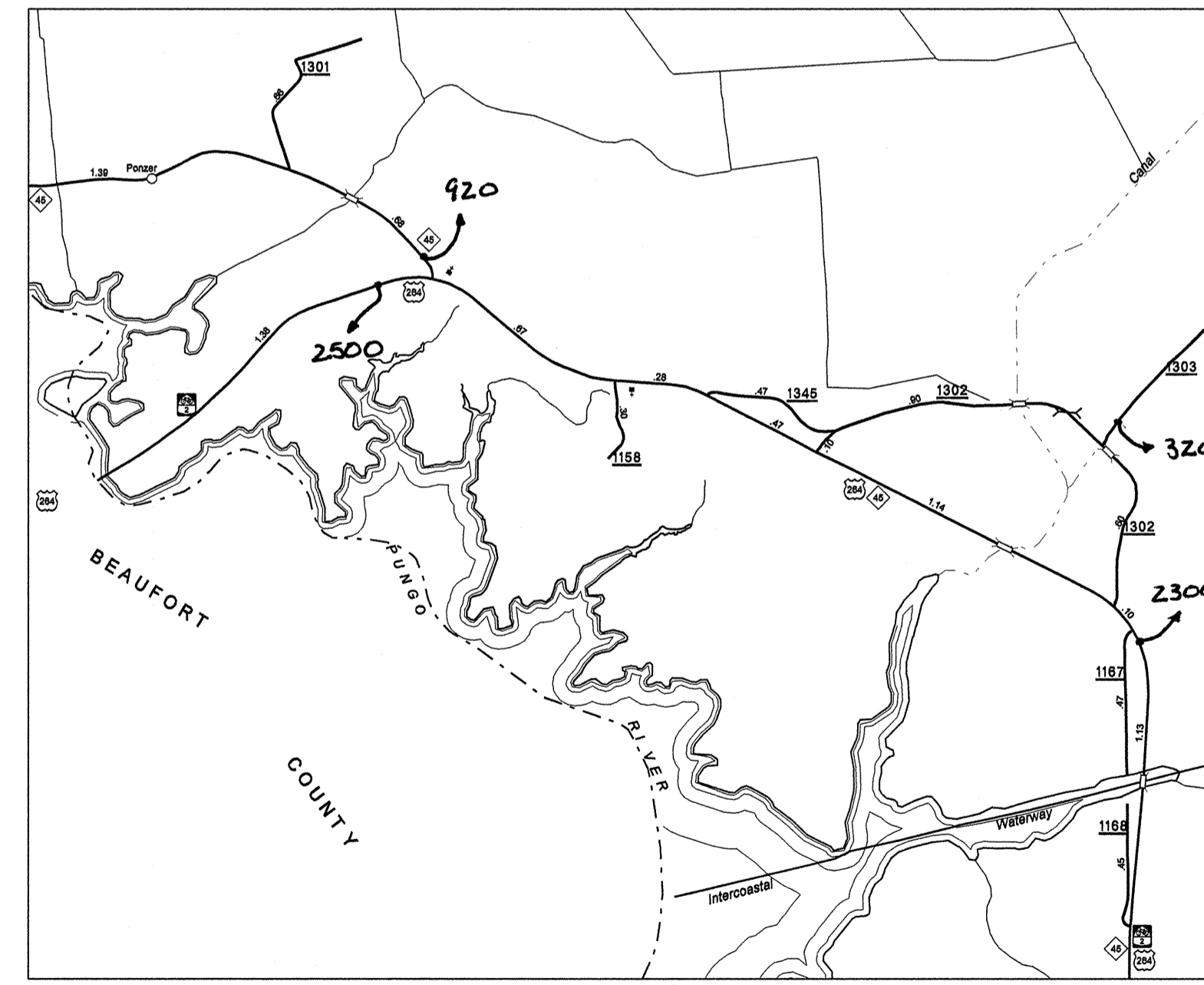
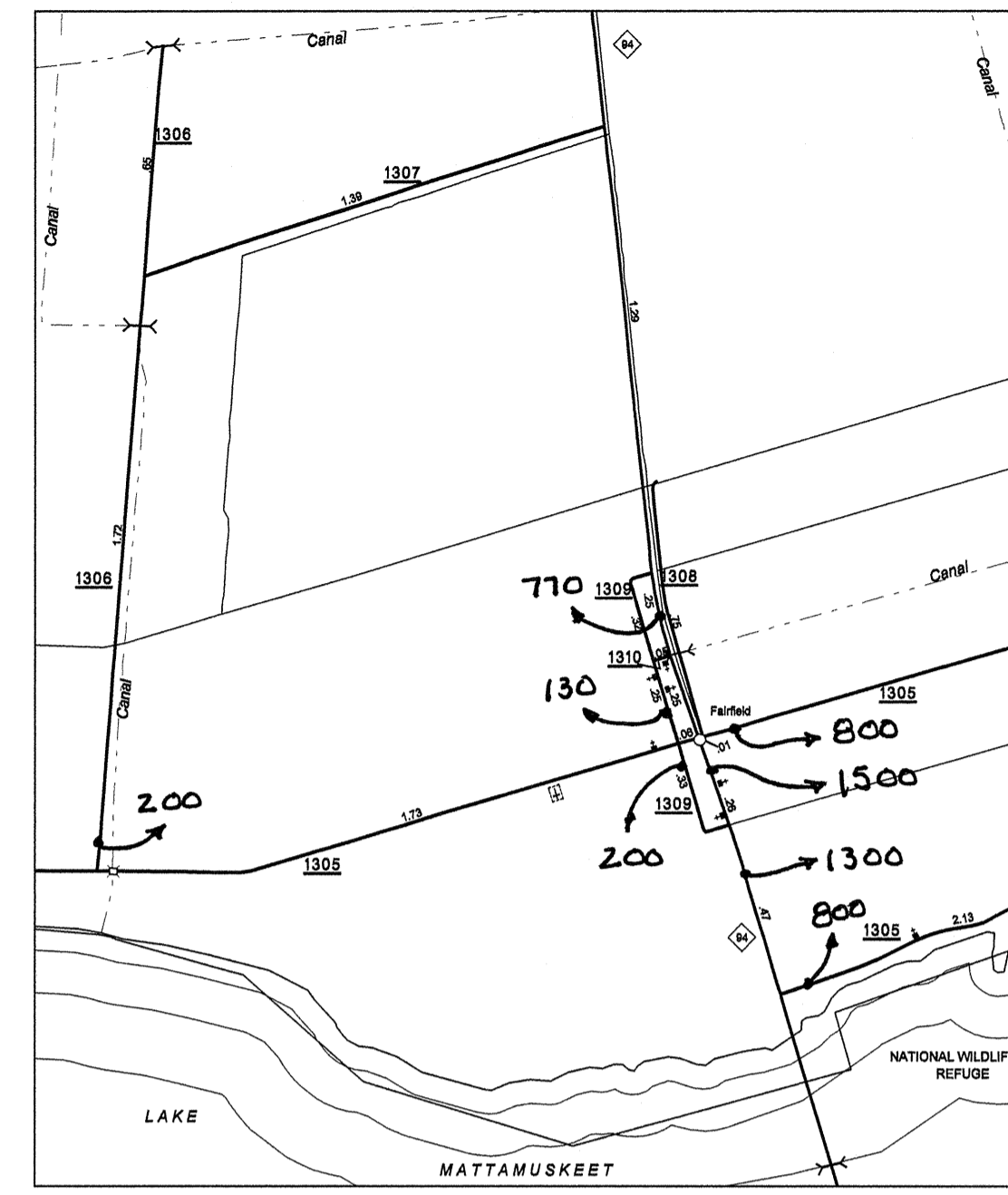
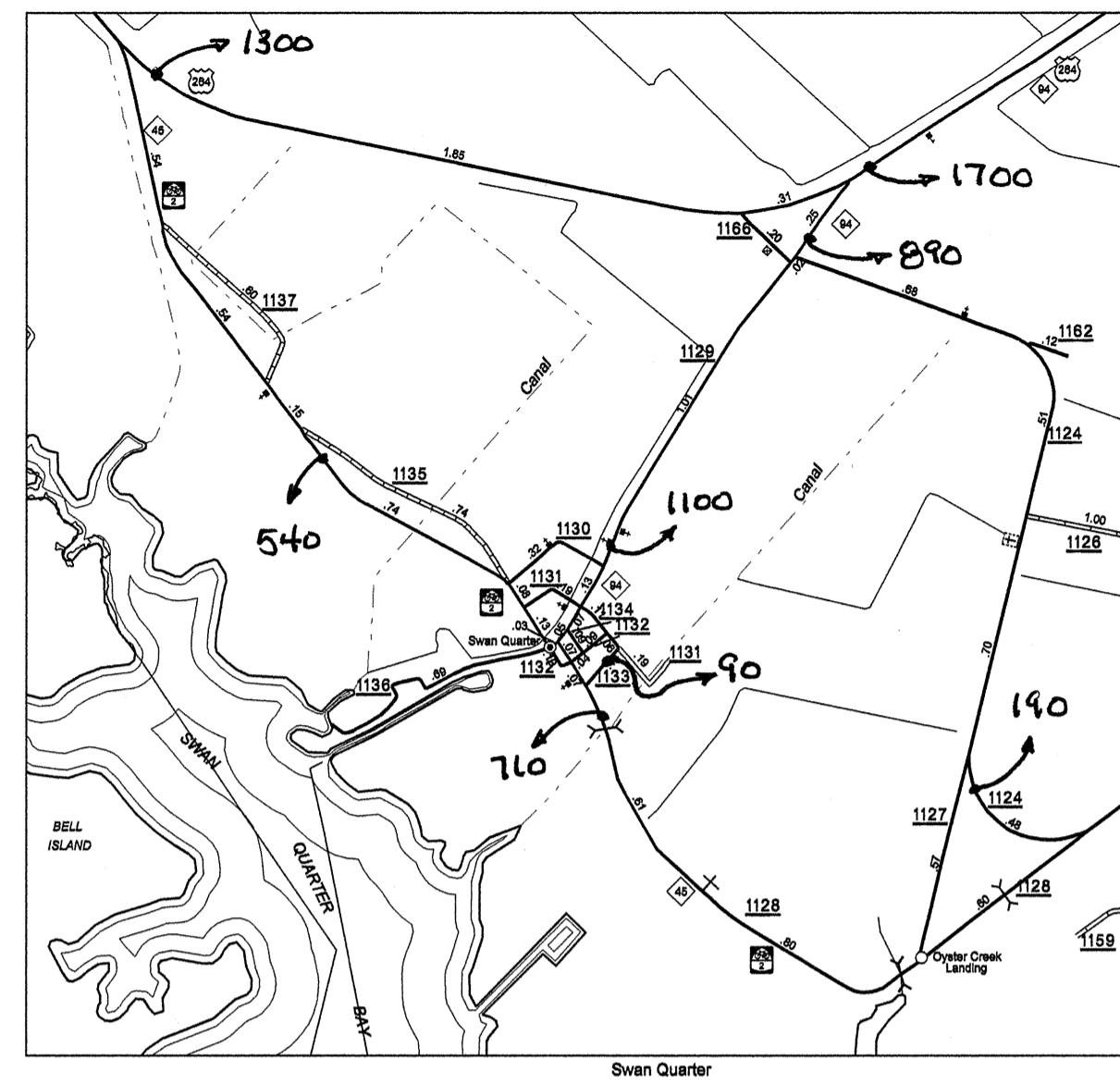
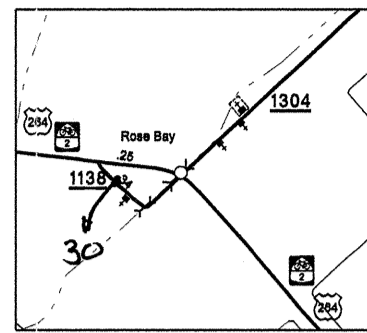
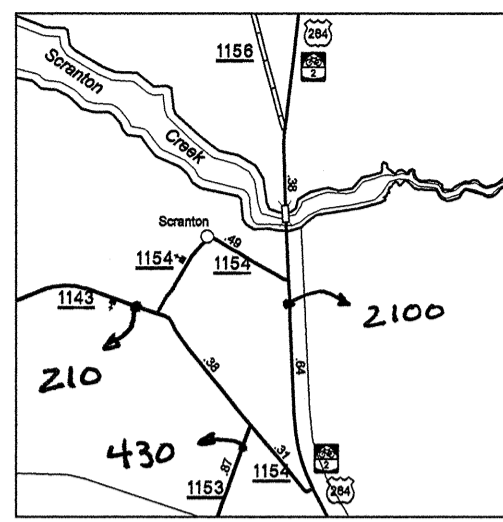
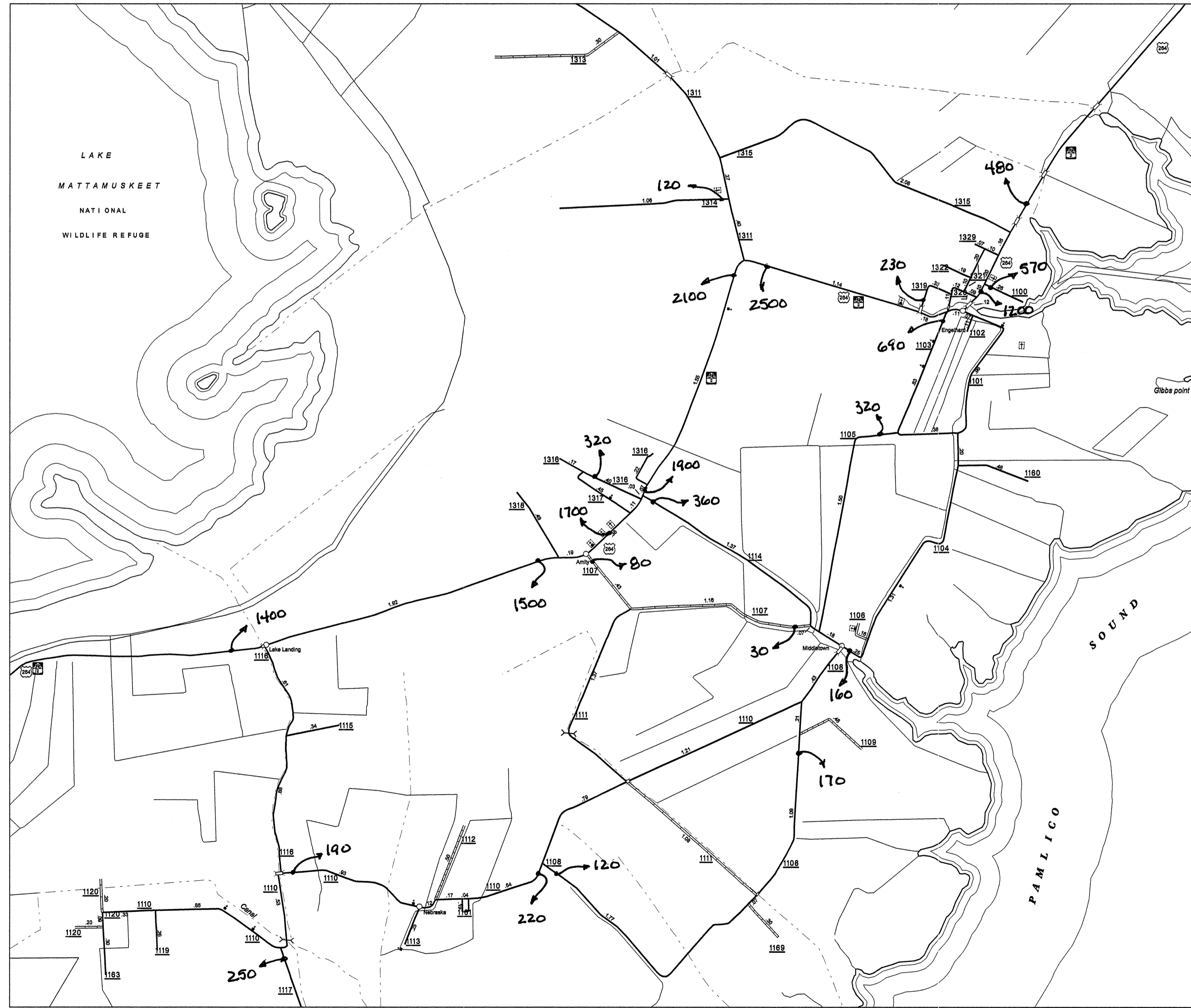


Disclaimer: The GIS Unit's goal is to provide the most accurate information as possible, the magnitude of the data prevents any guarantee of accuracy or completeness. If you find any information that is incorrect, please send your request to the GIS Unit.

HYDE COUNTY
SUP 1

COPIES OF THIS MAP ARE AVAILABLE TO THE PUBLIC AT A MINOR COST. ADDRESS: DEPARTMENT OF TRANSPORTATION RECORDS AND INFORMATION SYSTEMS 1000 EAST 8TH STREET, RALEIGH, N.C. 27601

REVISED
1/14/02 MSO
3/11/03 MSO
3/17/03 MSO
10/22/03 MSO
10/26/03 MSO
6/24/04 MCO
1/28/05 MSO



ENLARGED MUNICIPAL AND SUBURBAN AREAS
2005 AADT
ANNUAL AVERAGE DAILY TRAFFIC
HYDE COUNTY
NORTH CAROLINA
GENERATED BY THE
TRAFFIC SURVEY UNIT
TRANSPORTATION PLANNING BRANCH
PREPARED BY THE
NORTH CAROLINA DEPARTMENT OF TRANSPORTATION
INFORMATION TECHNOLOGY - GIS UNIT
IN COOPERATION WITH THE
U.S. DEPARTMENT OF TRANSPORTATION
FEDERAL HIGHWAY ADMINISTRATION

