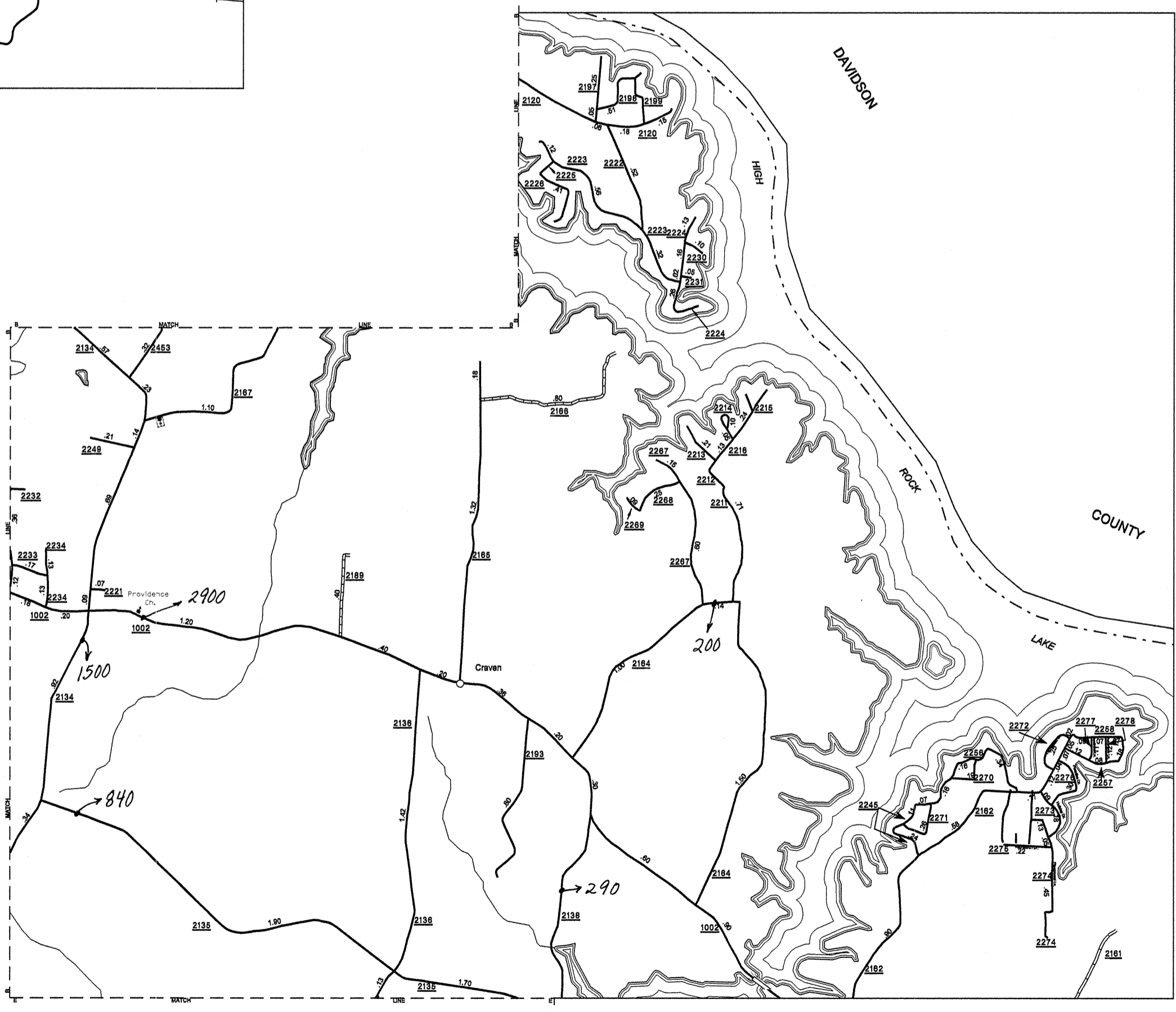
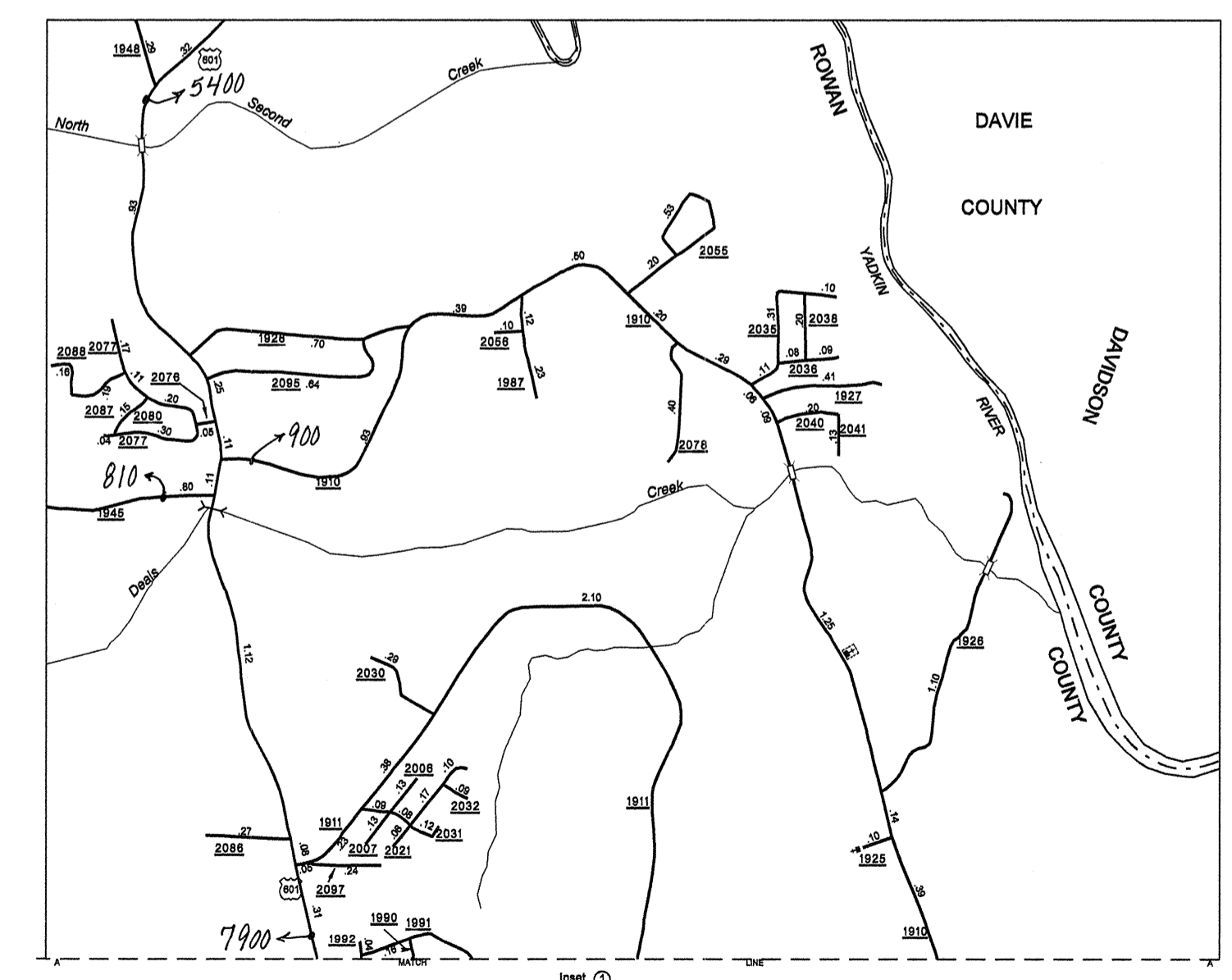
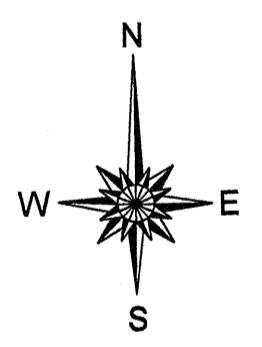
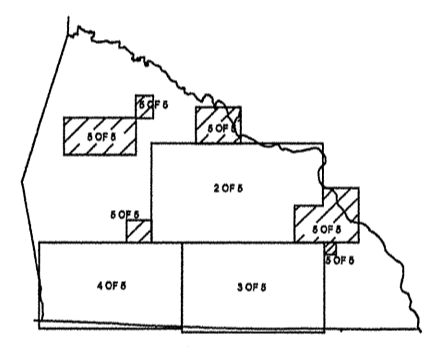
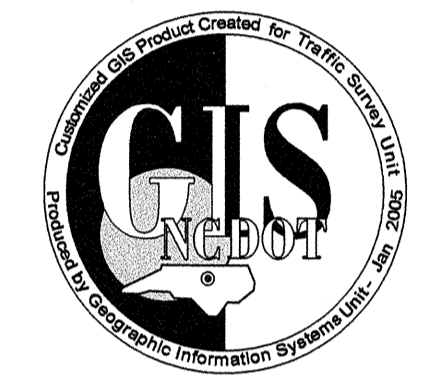
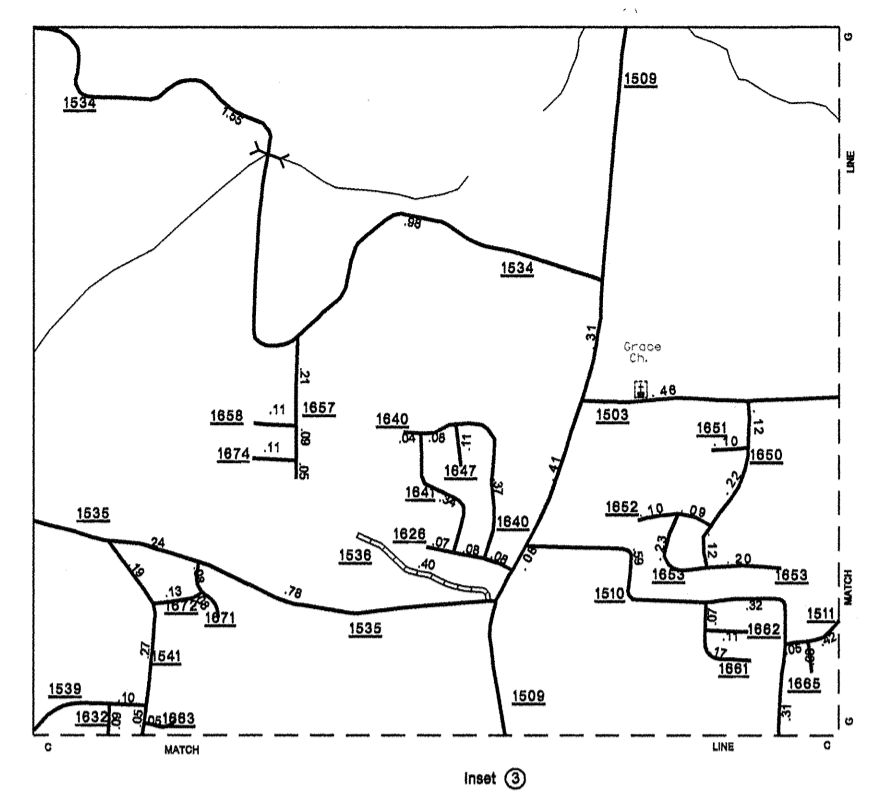
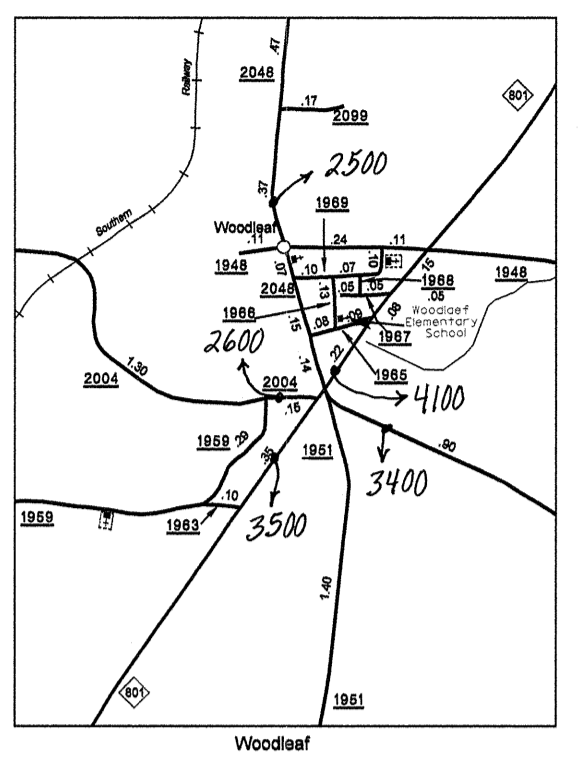
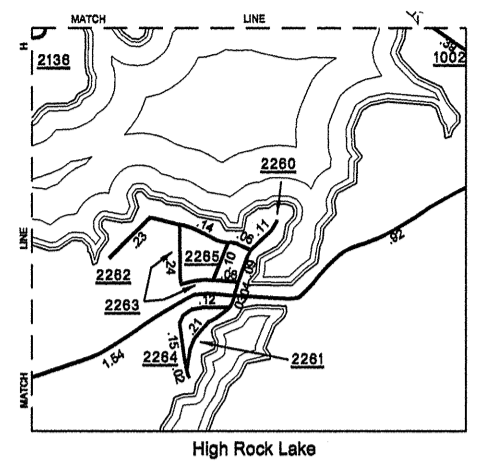
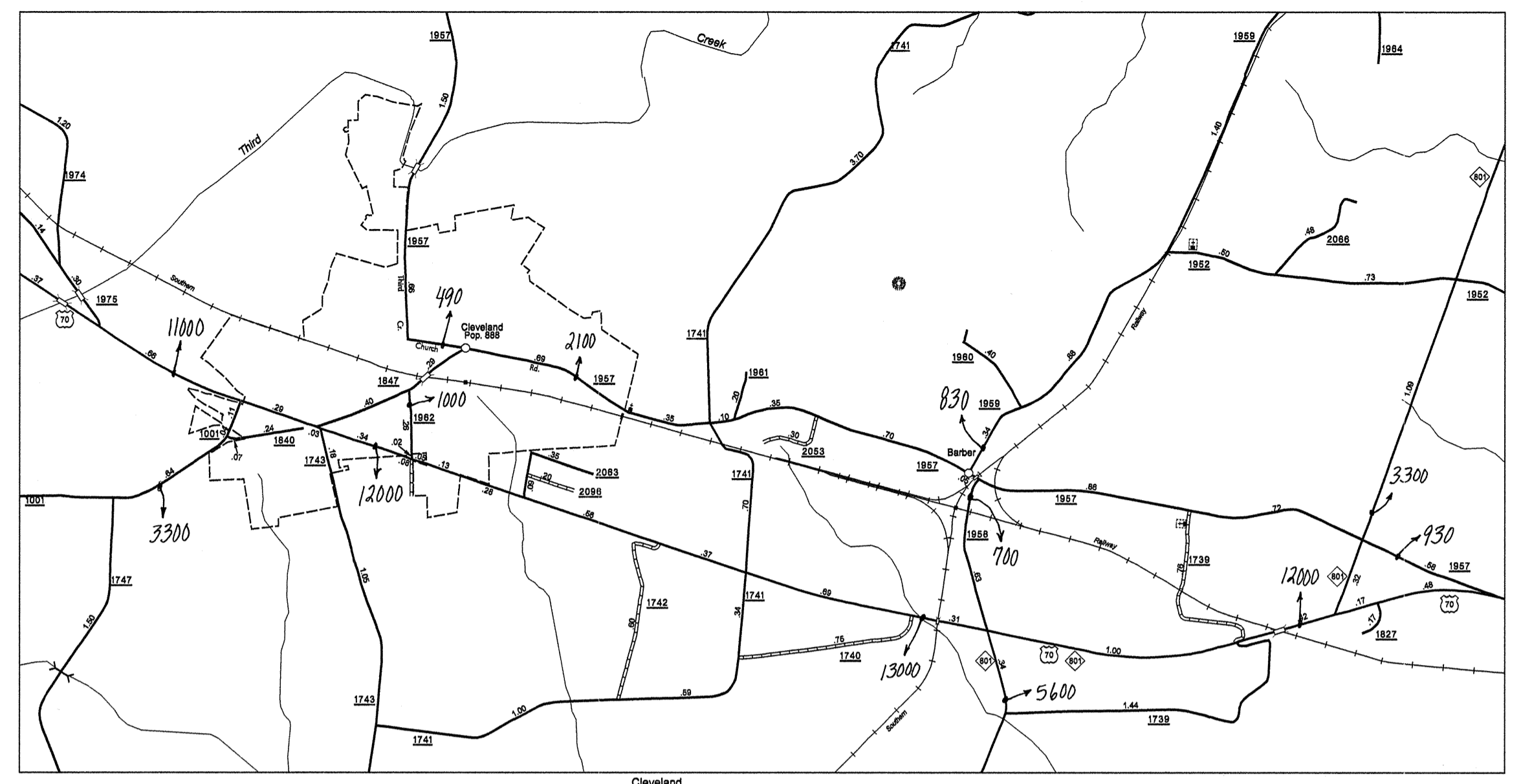


Disclaimer: The GIS Unit's goal is to provide the most accurate information as possible, the magnitude of the data prevents any guarantee of accuracy or completeness. If you find any information that is incorrect, please send your request to the GIS Unit.

COPIES OF THIS MAP ARE AVAILABLE TO THE PUBLIC AT A NOMINAL COST.
 NORTH CAROLINA DEPARTMENT OF TRANSPORTATION
 GEOGRAPHIC INFORMATION SYSTEMS
 1001 EAST 7TH STREET, SUITE 100
 RALEIGH, N.C. 27601



ENLARGED MUNICIPAL AND SUBURBAN AREAS
2004 AADT
 ANNUAL AVERAGE DAILY TRAFFIC
ROWAN COUNTY
 NORTH CAROLINA
 GENERATED BY THE
TRAFFIC SURVEY UNIT
 TRANSPORTATION PLANNING BRANCH
 PREPARED BY THE
 NORTH CAROLINA DEPARTMENT OF TRANSPORTATION
 DIVISION OF HIGHWAYS - GIS UNIT
 IN COOPERATION WITH THE
 U.S. DEPARTMENT OF TRANSPORTATION
 FEDERAL HIGHWAY ADMINISTRATION

