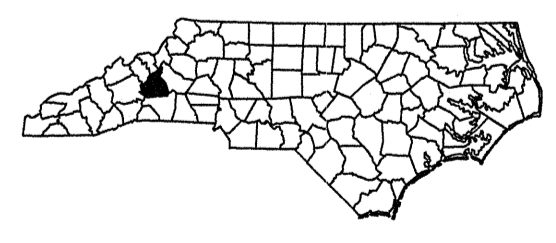
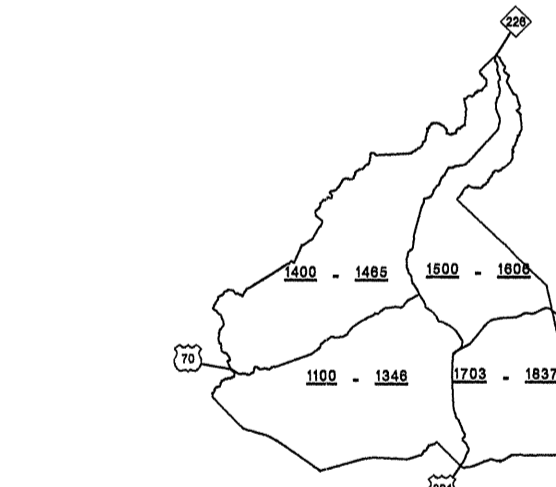
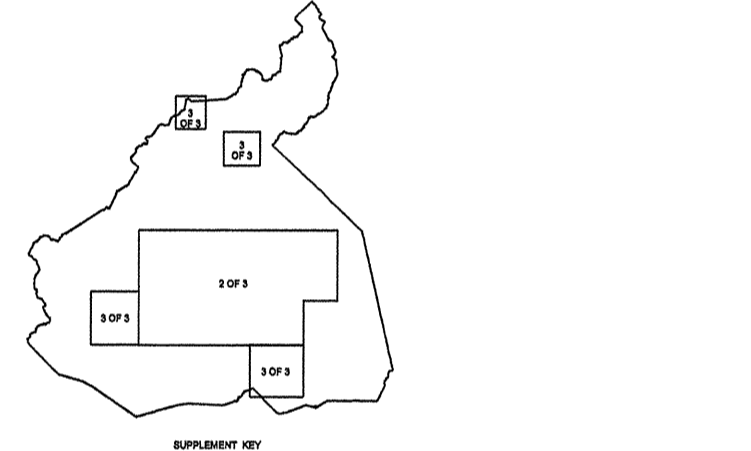
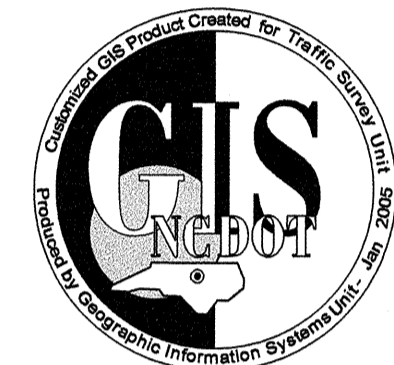
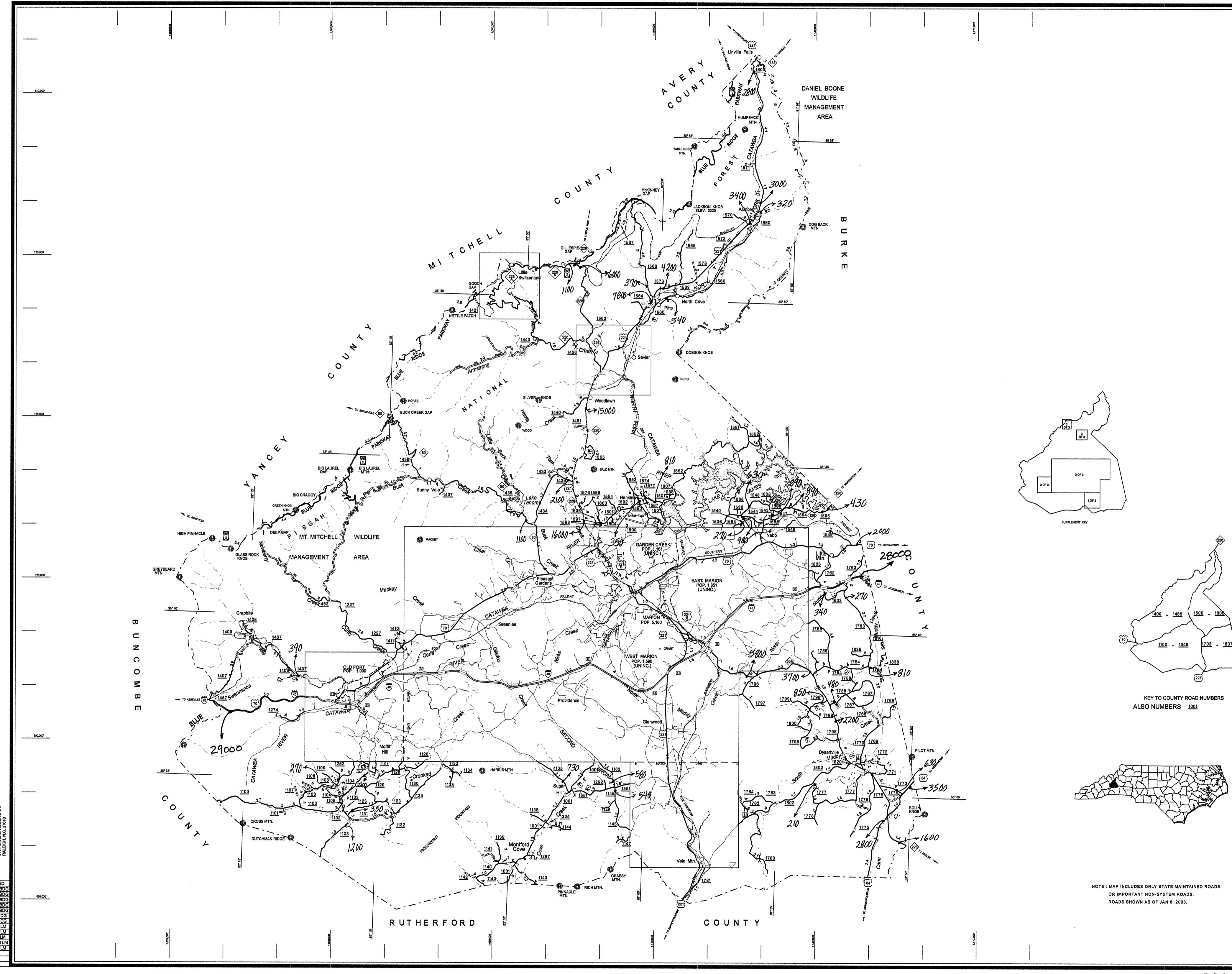


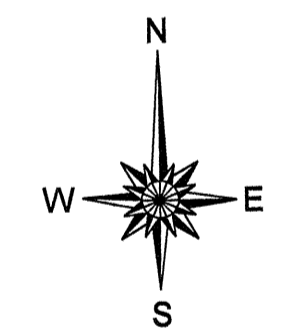
Disclaimer: The GIS User's goal is to provide the most accurate information as possible, the magnitude of the data prevents any guarantee of accuracy or completeness. If you find any information that is incorrect, please send your request to the GIS Unit.

COPIES OF THIS MAP ARE AVAILABLE
 AT THE FOLLOWING COST:
 1. N.C. DEPARTMENT OF TRANSPORTATION
 GEOGRAPHIC INFORMATION SYSTEMS
 RALEIGH, N.C. 27689
 2. \$10.00 PER COPY
 3. \$20.00 PER COPY
 4. \$30.00 PER COPY
 5. \$40.00 PER COPY
 6. \$50.00 PER COPY
 7. \$60.00 PER COPY
 8. \$70.00 PER COPY
 9. \$80.00 PER COPY
 10. \$90.00 PER COPY
 11. \$100.00 PER COPY
 12. \$110.00 PER COPY
 13. \$120.00 PER COPY
 14. \$130.00 PER COPY
 15. \$140.00 PER COPY
 16. \$150.00 PER COPY
 17. \$160.00 PER COPY
 18. \$170.00 PER COPY
 19. \$180.00 PER COPY
 20. \$190.00 PER COPY
 21. \$200.00 PER COPY
 22. \$210.00 PER COPY
 23. \$220.00 PER COPY
 24. \$230.00 PER COPY
 25. \$240.00 PER COPY
 26. \$250.00 PER COPY
 27. \$260.00 PER COPY
 28. \$270.00 PER COPY
 29. \$280.00 PER COPY
 30. \$290.00 PER COPY
 31. \$300.00 PER COPY
 32. \$310.00 PER COPY
 33. \$320.00 PER COPY
 34. \$330.00 PER COPY
 35. \$340.00 PER COPY
 36. \$350.00 PER COPY
 37. \$360.00 PER COPY
 38. \$370.00 PER COPY
 39. \$380.00 PER COPY
 40. \$390.00 PER COPY
 41. \$400.00 PER COPY
 42. \$410.00 PER COPY
 43. \$420.00 PER COPY
 44. \$430.00 PER COPY
 45. \$440.00 PER COPY
 46. \$450.00 PER COPY
 47. \$460.00 PER COPY
 48. \$470.00 PER COPY
 49. \$480.00 PER COPY
 50. \$490.00 PER COPY
 51. \$500.00 PER COPY
 52. \$510.00 PER COPY
 53. \$520.00 PER COPY
 54. \$530.00 PER COPY
 55. \$540.00 PER COPY
 56. \$550.00 PER COPY
 57. \$560.00 PER COPY
 58. \$570.00 PER COPY
 59. \$580.00 PER COPY
 60. \$590.00 PER COPY
 61. \$600.00 PER COPY
 62. \$610.00 PER COPY
 63. \$620.00 PER COPY
 64. \$630.00 PER COPY
 65. \$640.00 PER COPY
 66. \$650.00 PER COPY
 67. \$660.00 PER COPY
 68. \$670.00 PER COPY
 69. \$680.00 PER COPY
 70. \$690.00 PER COPY
 71. \$700.00 PER COPY
 72. \$710.00 PER COPY
 73. \$720.00 PER COPY
 74. \$730.00 PER COPY
 75. \$740.00 PER COPY
 76. \$750.00 PER COPY
 77. \$760.00 PER COPY
 78. \$770.00 PER COPY
 79. \$780.00 PER COPY
 80. \$790.00 PER COPY
 81. \$800.00 PER COPY
 82. \$810.00 PER COPY
 83. \$820.00 PER COPY
 84. \$830.00 PER COPY
 85. \$840.00 PER COPY
 86. \$850.00 PER COPY
 87. \$860.00 PER COPY
 88. \$870.00 PER COPY
 89. \$880.00 PER COPY
 90. \$890.00 PER COPY
 91. \$900.00 PER COPY
 92. \$910.00 PER COPY
 93. \$920.00 PER COPY
 94. \$930.00 PER COPY
 95. \$940.00 PER COPY
 96. \$950.00 PER COPY
 97. \$960.00 PER COPY
 98. \$970.00 PER COPY
 99. \$980.00 PER COPY
 100. \$990.00 PER COPY
 101. \$1000.00 PER COPY



NOTE: MAP INCLUDES ONLY STATE MAINTAINED ROADS
 OR IMPORTANT NON-SYSTEM ROADS.
 ROADS SHOWN AS OF JAN 8, 2003.

- LEGEND**
- PRIMITIVE OR UNIMPROVED ROAD
 - GRADED AND DRAINED ROAD
 - SOIL GRAVEL OR STONE SURFACED ROAD
 - HARD SURFACED ROAD
 - 4 LANE UNDIVIDED HIGHWAY
 - DIVIDED HIGHWAY
 - HIGHWAY WITH FRONTAGE ROADS
 - FULL CONTROL ACCESS
 - NON-SYSTEM ROAD
 - PROJECTED LOCATION
 - INTERSECTION DISTANCE
 - TRAFFIC CIRCLE
 - HIGHWAY INTERCHANGE
 - DETAILED HIGHWAY INTERCHANGE
 - ROAD THROUGH MOUNTAIN PASS
 - HIGHWAY BRIDGE
 - UNDERPASS
 - OVERPASS
 - DRAW SPAN ON BRIDGE
 - HIGHWAY TUNNEL
 - FORD
 - INTERSTATE HIGHWAY
 - U.S. NUMBERED HIGHWAY
 - N.C. NUMBERED HIGHWAY
 - U.S. NUMBERED BICYCLE ROUTE
 - N.C. NUMBERED BICYCLE ROUTE
 - INTERSTATE INTERCHANGE NUMBER
 - SECONDARY ROAD NUMBER
 - CABLE
 - RAILROAD ANY NUMBER OF TRACKS
 - RAILROAD ANY NUMBER OF TRACKS USED BY MORE THAN ONE OPERATING COMPANY ON SAME OR ADJACENT RIGHTS-OF-WAY
 - RAILROAD STATION
 - RAILROAD CROSSING
 - UNDERPASS
 - OVERPASS
 - RAILROAD TUNNEL
 - INSET AREA
 - URBAN EXTENSION
 - BOUNDARY
 - RESERVATION OR PARK BOUNDARY
 - CITY LIMIT
 - NATIONAL FOREST BOUNDARY
 - STATE FOREST BOUNDARY
 - FEDERAL GAMELAND BOUNDARY
 - STATE GAMELAND BOUNDARY
 - MILITARY RESERVATION BOUNDARY
 - COUNTY LINE
 - STATE LINE
 - INCORPORATED CITY OR VILLAGE, (GENERALIZED)
 - CANAL
 - NARROW STREAM
 - WIDE STREAM
 - DAM WITH LOCK
 - DAM
 - RESERVOIR, POND, OR LAKE
 - COMMUNITY AND TOWN CENTER
 - COUNTY SEAT
 - SCHOOL
 - COLLEGE OR UNIVERSITY
 - HOSPITAL
 - CHURCH
 - CHURCH WITH CEMETERY
 - CEMETERY
 - PATROL STATION
 - CORRECTIONAL OR PENAL INSTN.
 - HIGHWAY GARAGE OR MAINT. YARD
 - HIGHWAY DIV. OR DIST. OFFICE
 - WEIGHT STATION
 - MONUMENT-SMALL HISTORICAL SITE
 - LIGHTHOUSE
 - MOUNTAIN PEAK
 - REST AREA
 - TRANSLATION STATION
 - COAST GUARD STATION
 - MILITARY AIRFIELD
 - COMMERCIAL OR MUNICIPAL FIELD
 - HANGAR ON FIELD
 - LANDING STRIP
 - MARKED AUXILIARY FIELD



2004 AADT
 ANNUAL AVERAGE DAILY TRAFFIC
McDOWELL COUNTY
 NORTH CAROLINA
 GENERATED BY THE
TRAFFIC SURVEY UNIT
 TRANSPORTATION PLANNING BRANCH
 PREPARED BY THE
 NORTH CAROLINA DEPARTMENT OF TRANSPORTATION
 DIVISION OF HIGHWAYS - GIS UNIT
 IN COOPERATION WITH THE
 U.S. DEPARTMENT OF TRANSPORTATION
 FEDERAL HIGHWAY ADMINISTRATION

