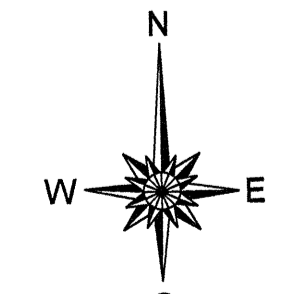
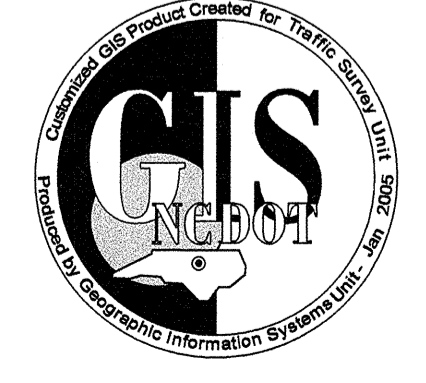
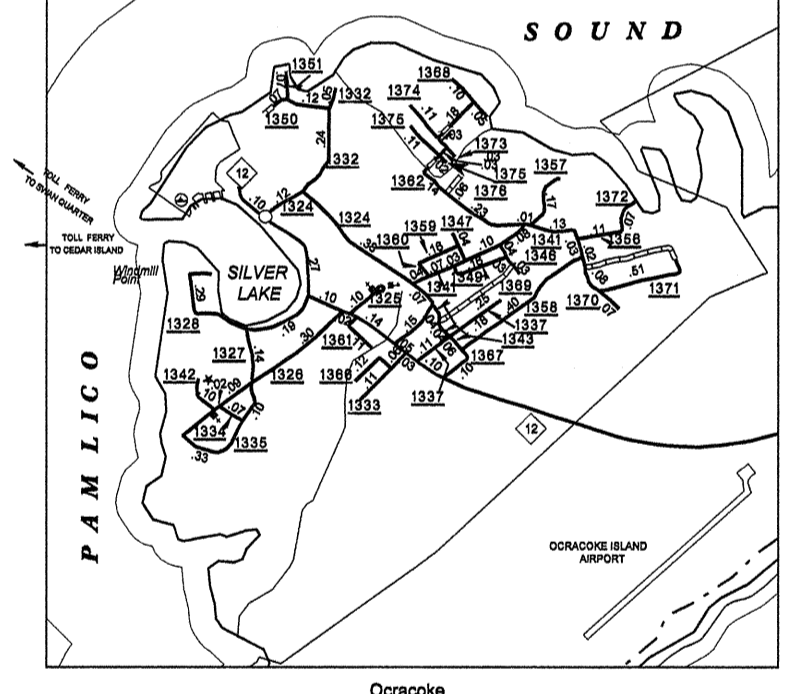
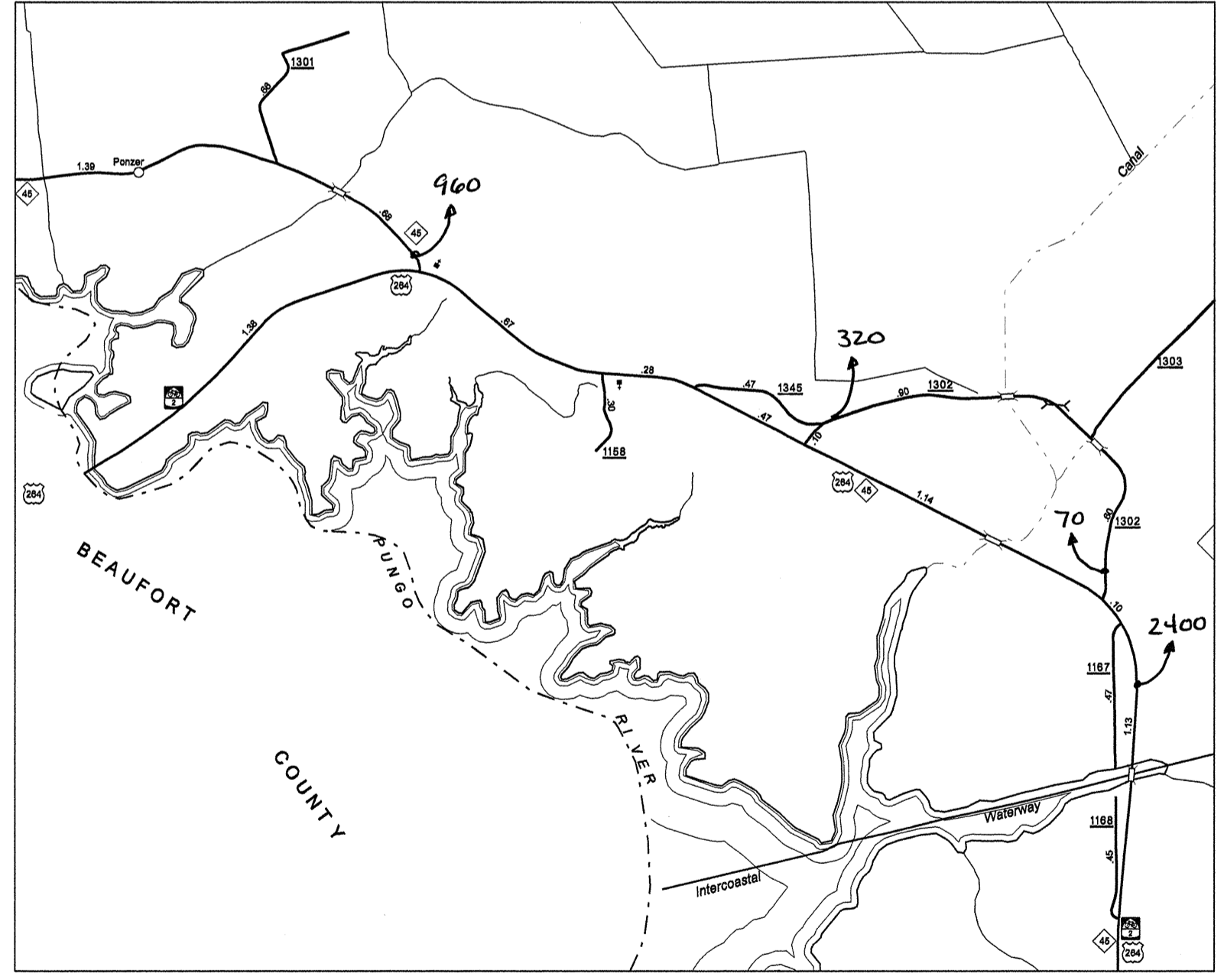
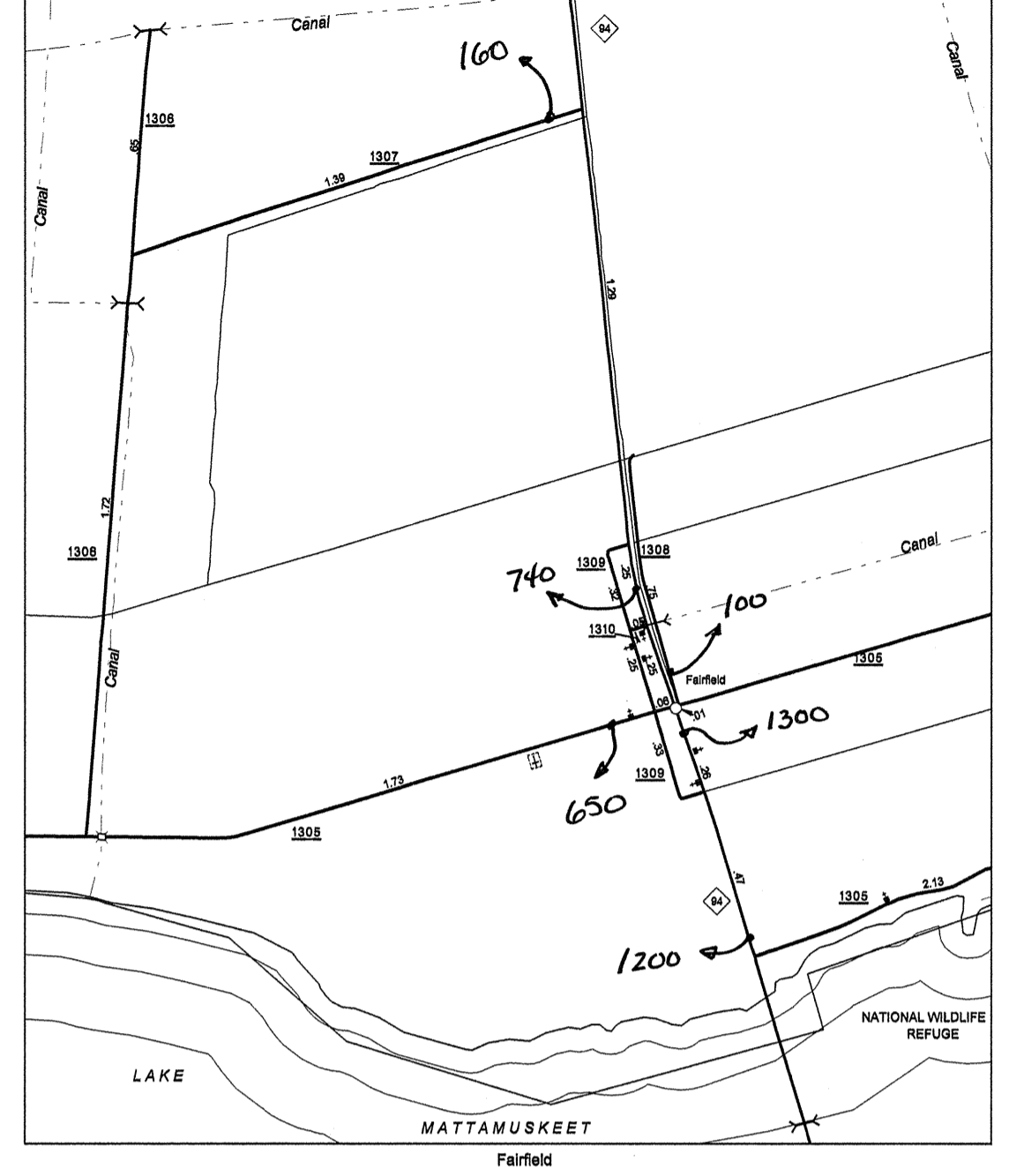
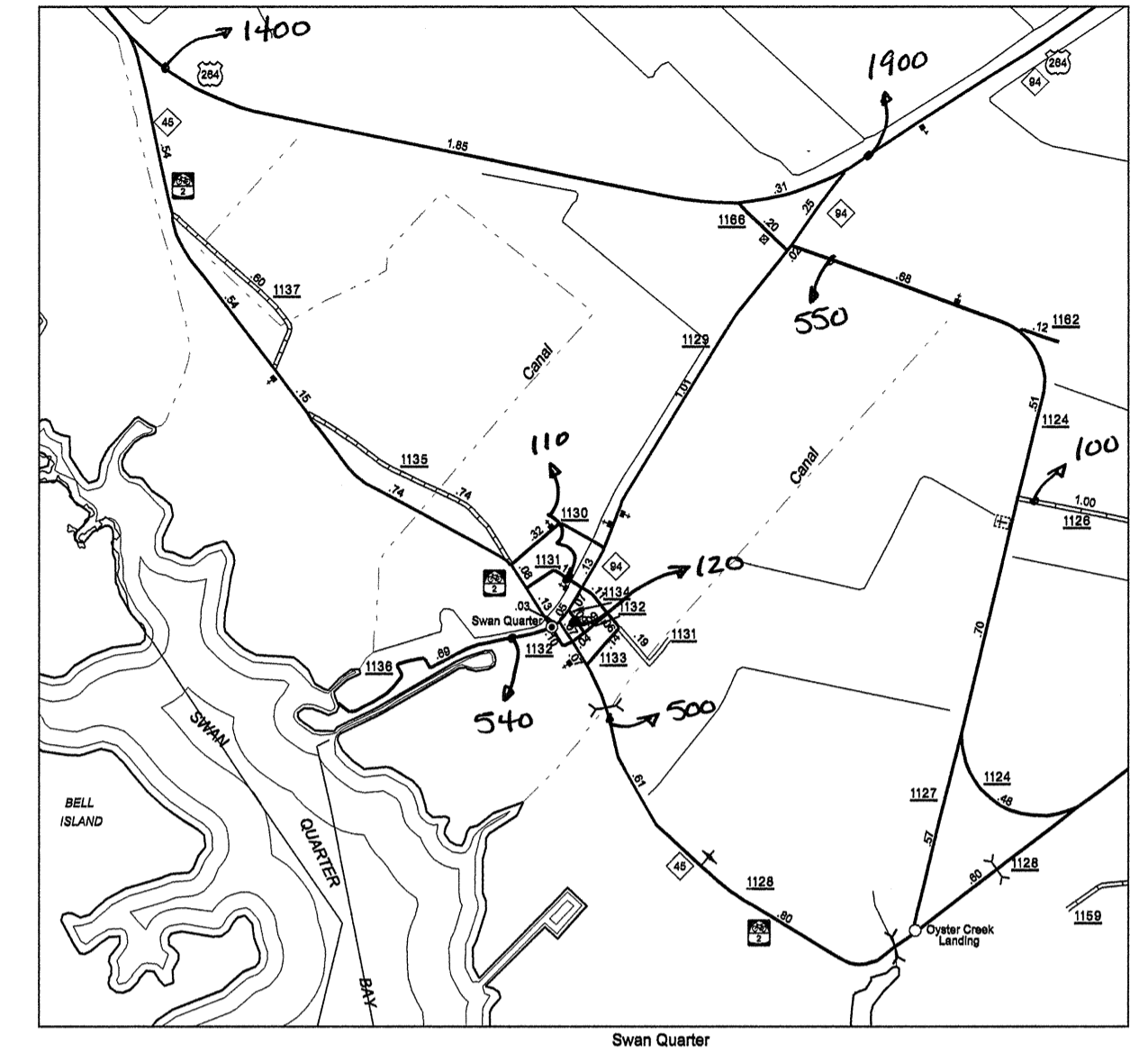
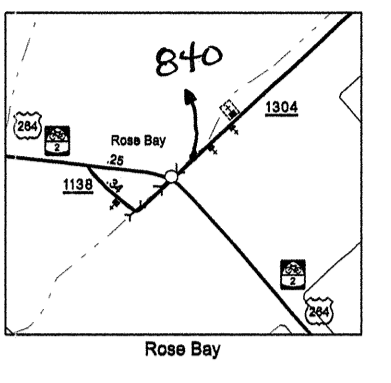
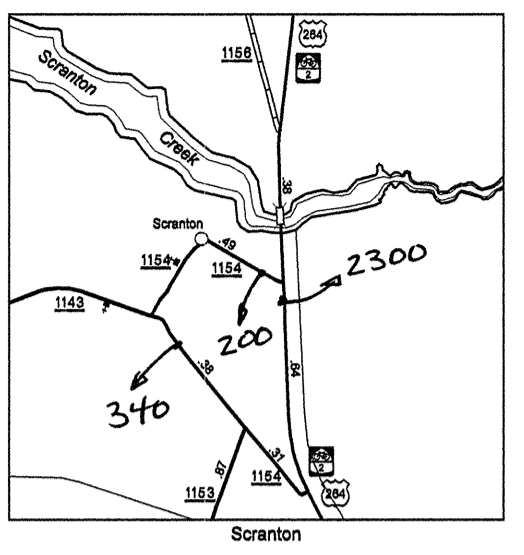
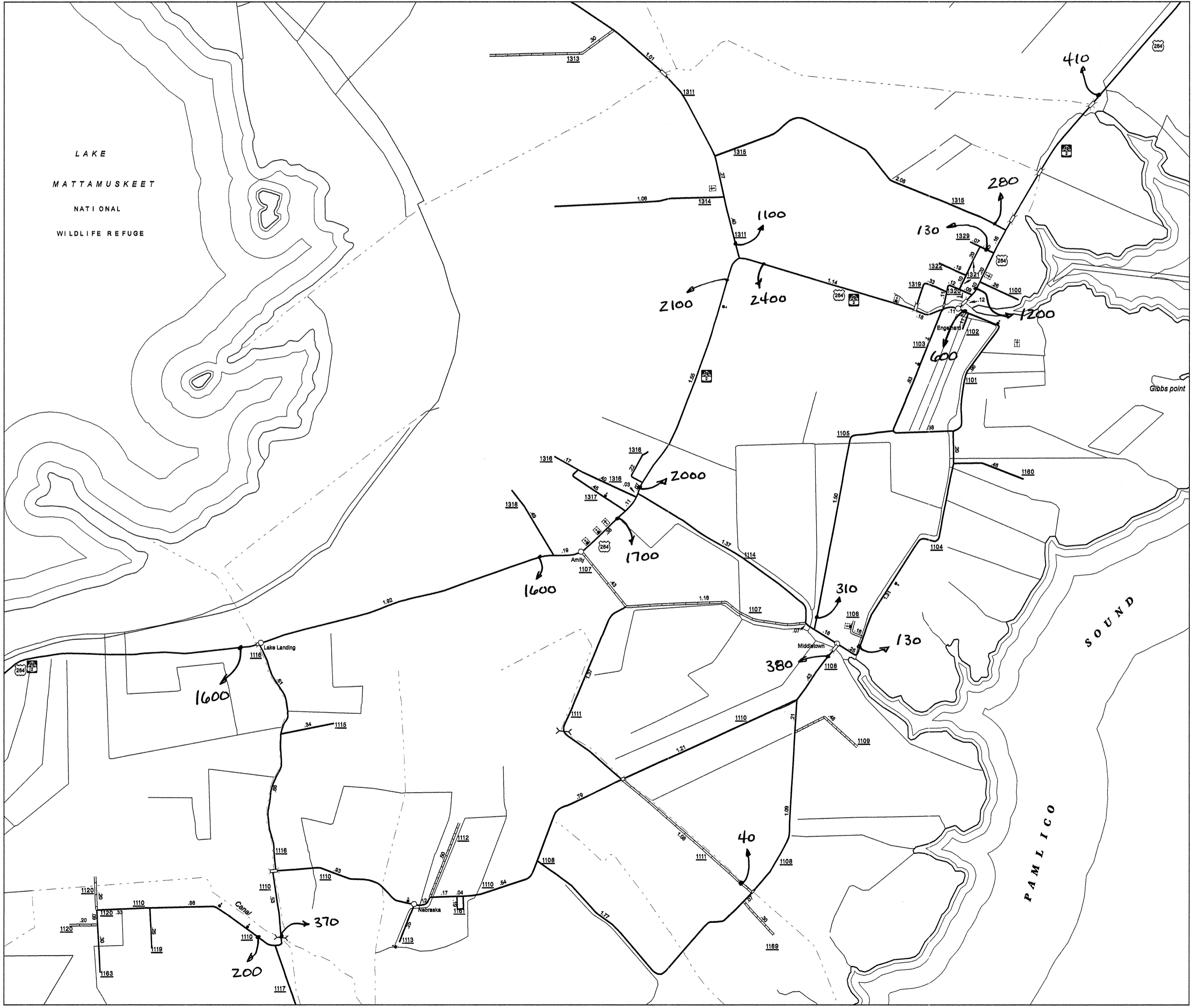


Disclaimer: The GIS Unit's goal is to provide the most accurate information as possible, the magnitude of the data prevents any guarantee of accuracy or completeness. If you find any information that is incorrect, please send your request to the GIS Unit.

HYDE COUNTY
 SUP 1
 COPIES OF THIS MAP ARE AVAILABLE TO THE PUBLIC AT A NOMINAL COST.
 ADDRESS: THE DEPARTMENT OF TRANSPORTATION
 GEOGRAPHIC INFORMATION SYSTEMS
 BUILDING, N.C. 27601-0290
 FAX: 919-733-2100

REVISION	DATE
174422 MSB	01/13/03
174423 MSB	01/13/03
174424 MSB	01/13/03
174425 MSB	01/13/03
174426 MSB	01/13/03
174427 MSB	01/13/03
174428 MSB	01/13/03
174429 MSB	01/13/03
174430 MSB	01/13/03
174431 MSB	01/13/03
174432 MSB	01/13/03
174433 MSB	01/13/03
174434 MSB	01/13/03
174435 MSB	01/13/03
174436 MSB	01/13/03
174437 MSB	01/13/03
174438 MSB	01/13/03
174439 MSB	01/13/03
174440 MSB	01/13/03



ENLARGED MUNICIPAL AND SUBURBAN AREAS
2004 AADT
 ANNUAL AVERAGE DAILY TRAFFIC
HYDE COUNTY
 NORTH CAROLINA
GENERATED BY THE
TRAFFIC SURVEY UNIT
TRANSPORTATION PLANNING BRANCH
PREPARED BY THE
 NORTH CAROLINA DEPARTMENT OF TRANSPORTATION
 DIVISION OF HIGHWAYS - GIS UNIT
IN COOPERATION WITH THE
 U.S. DEPARTMENT OF TRANSPORTATION
 FEDERAL HIGHWAY ADMINISTRATION

