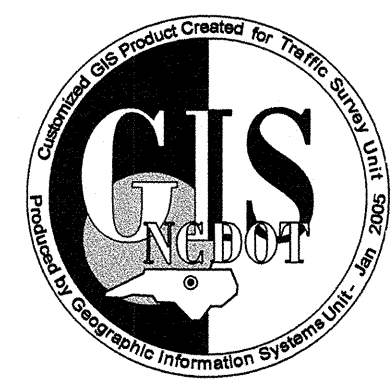
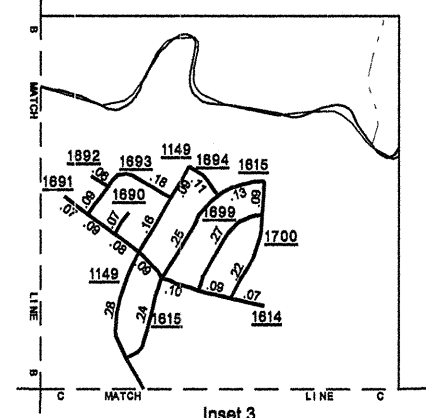
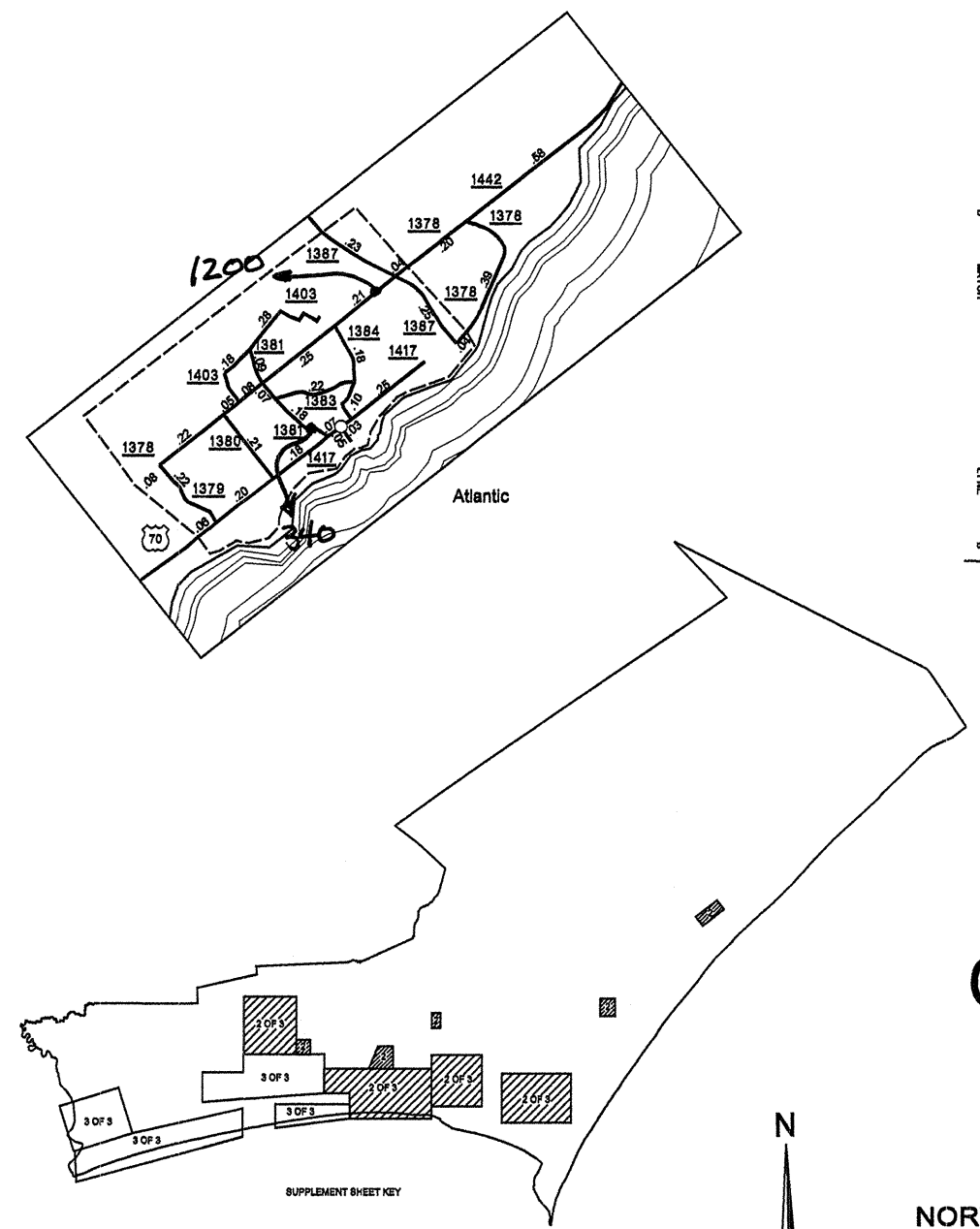
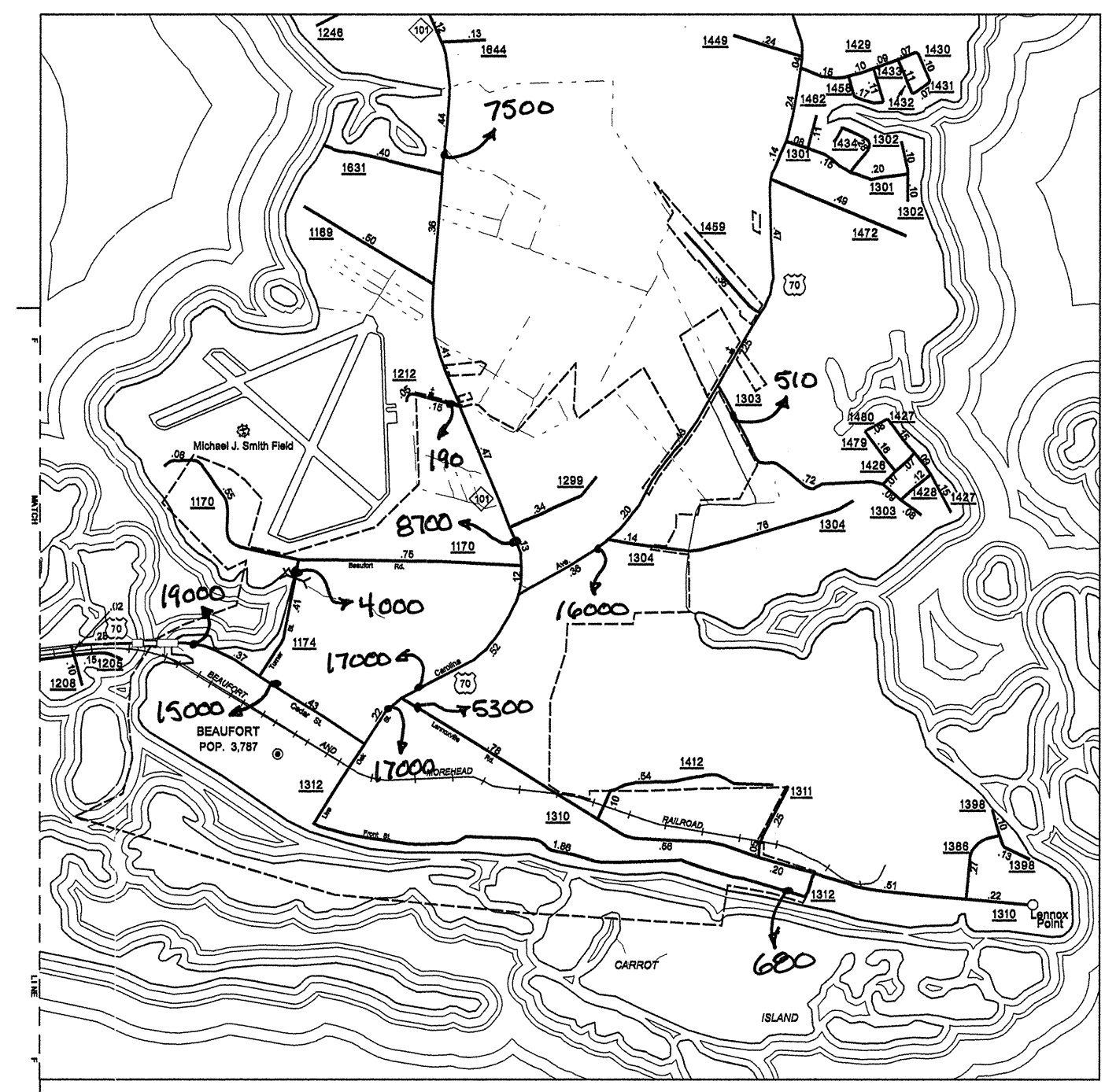
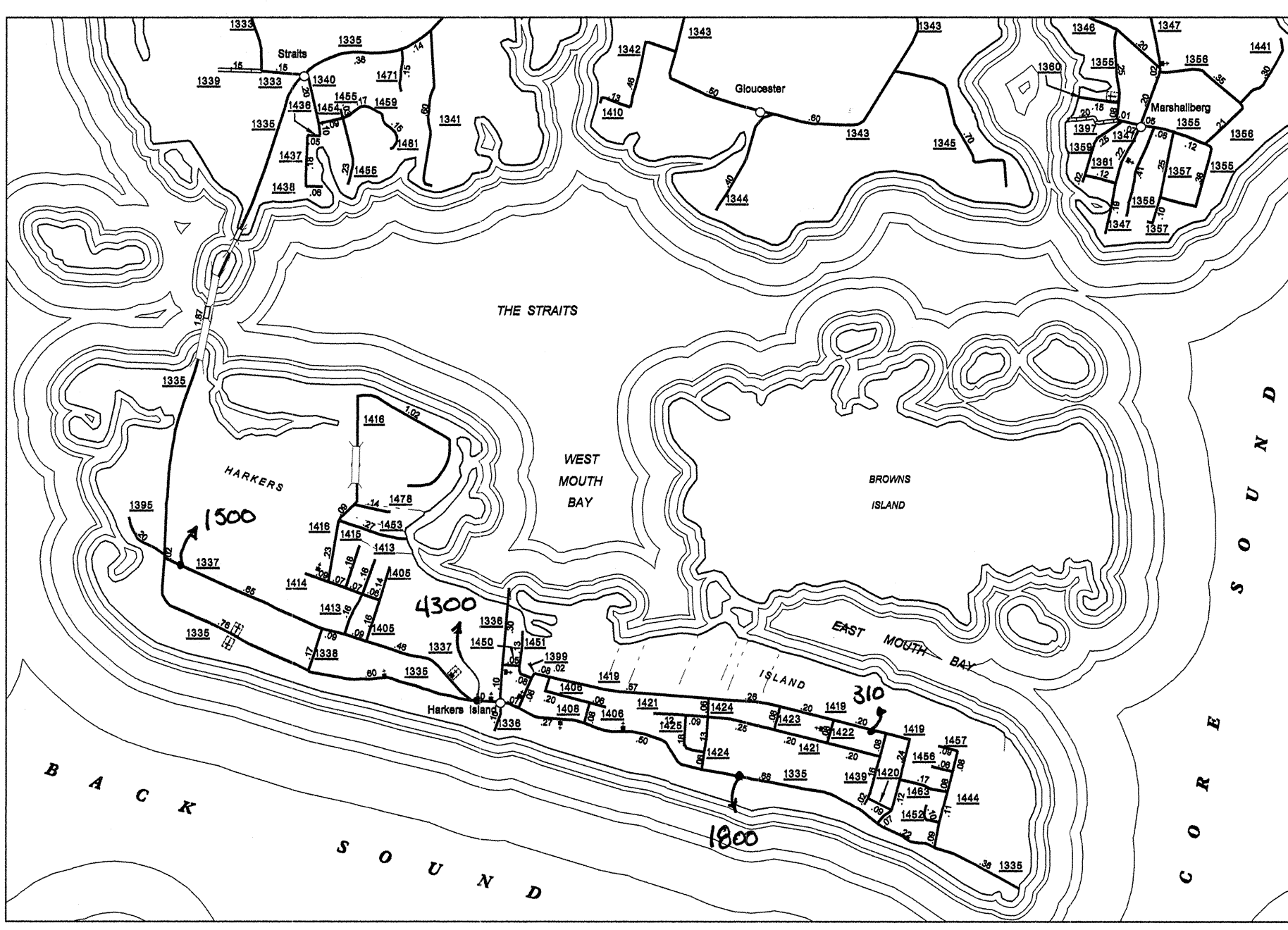
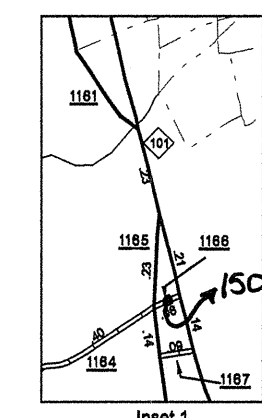
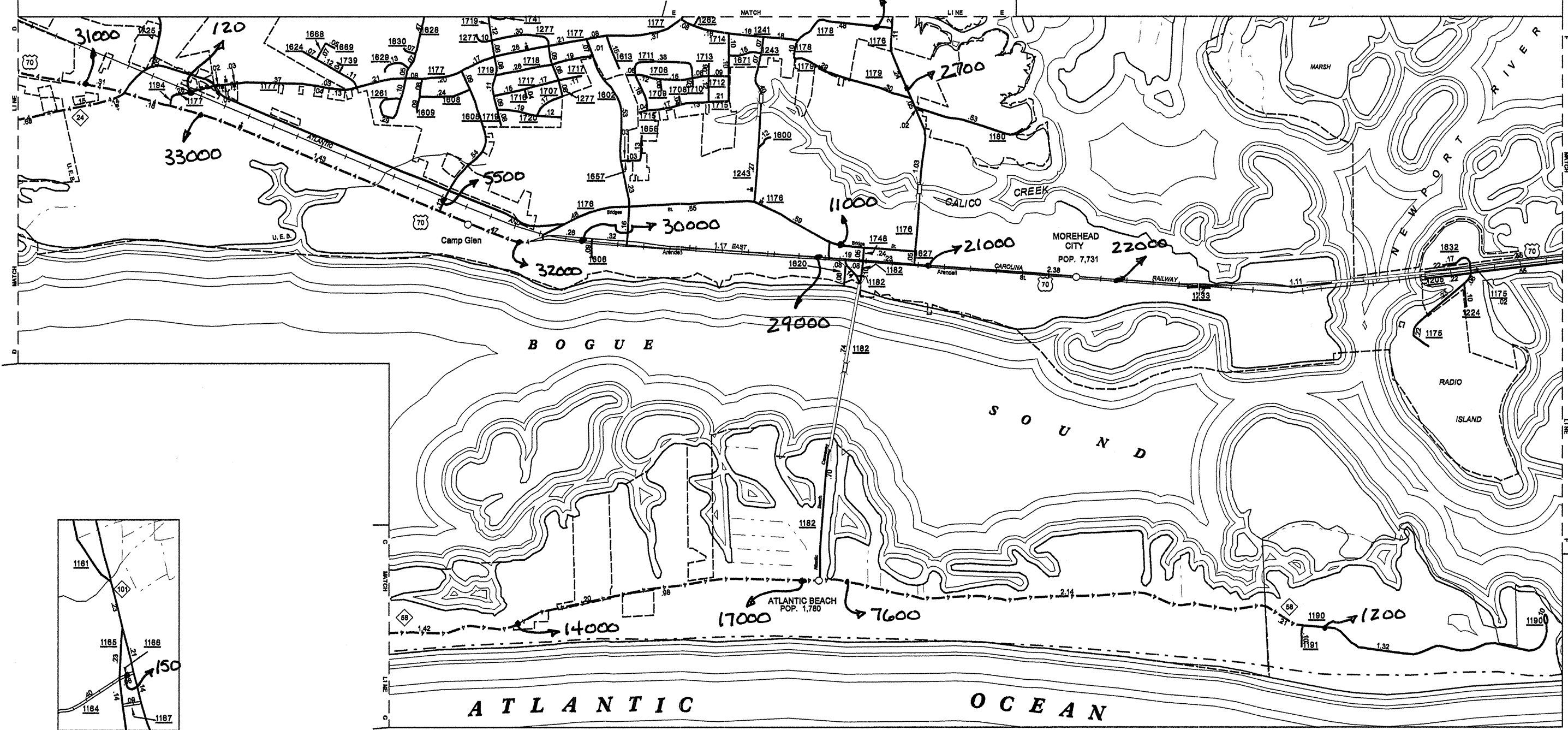
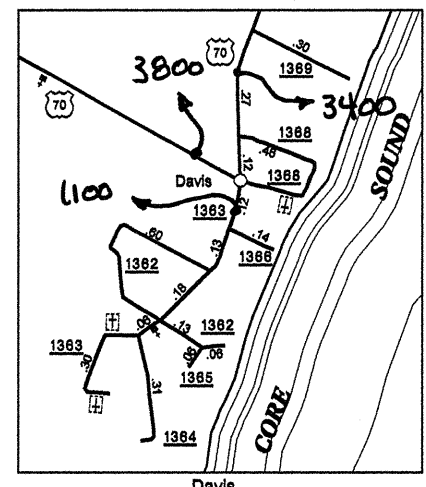
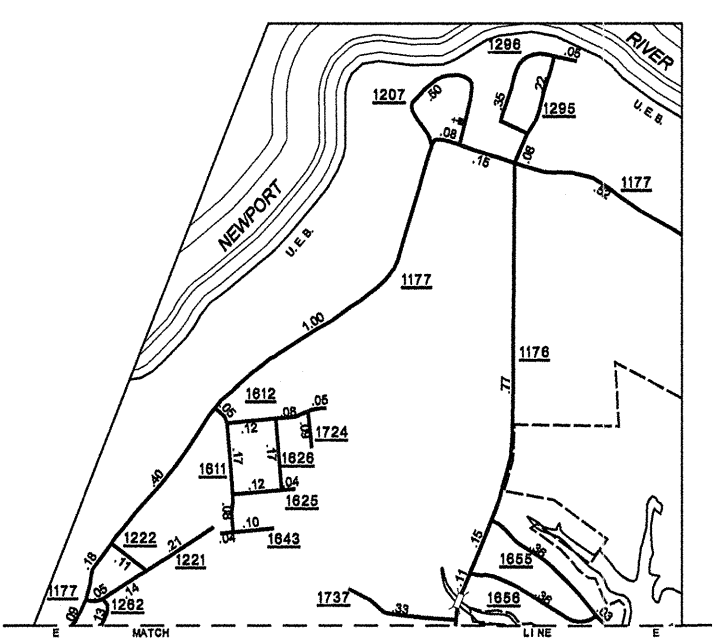
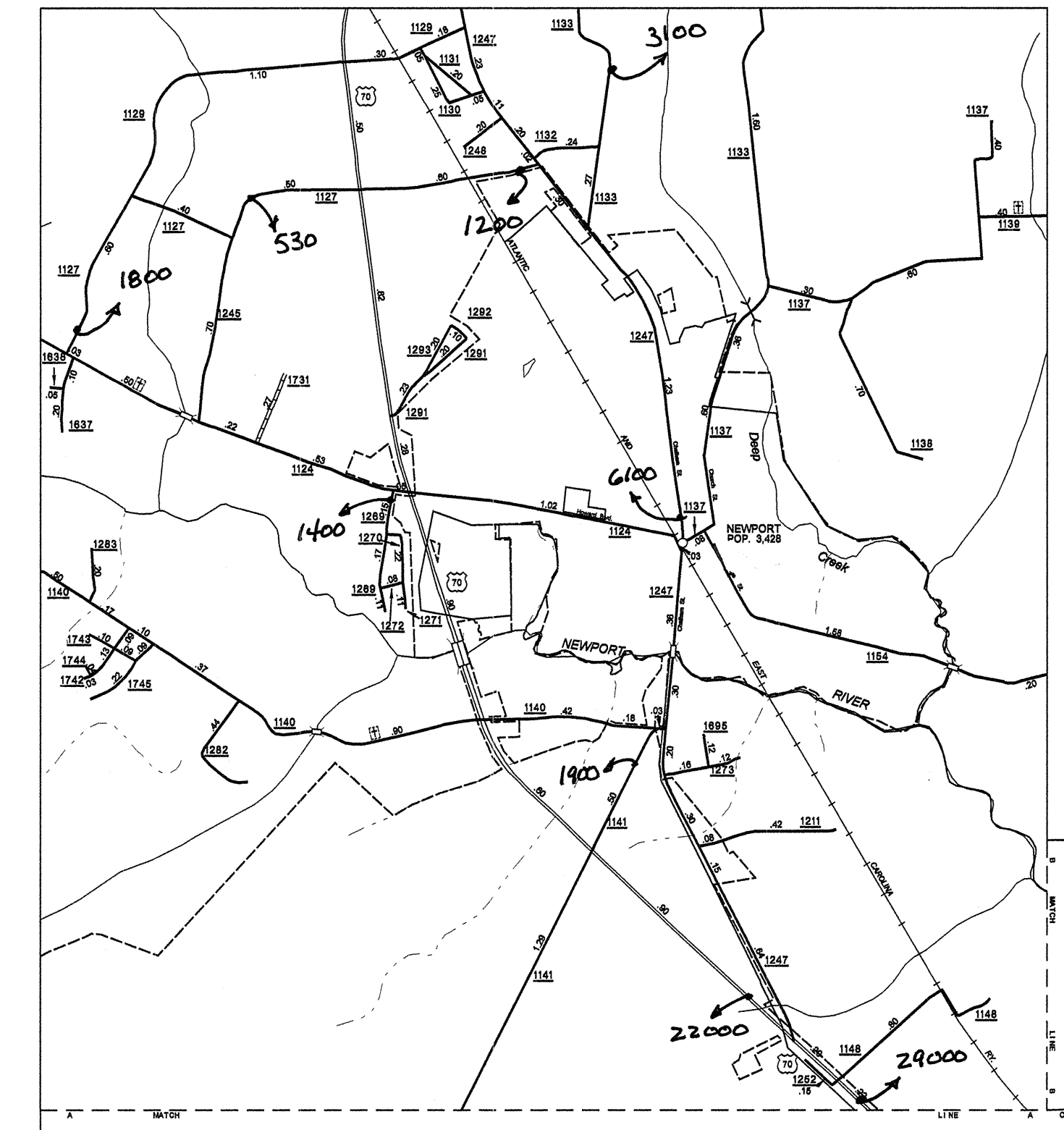
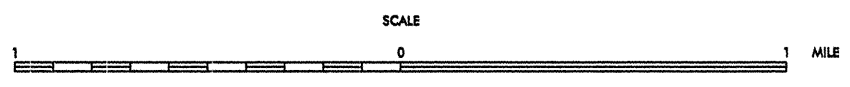
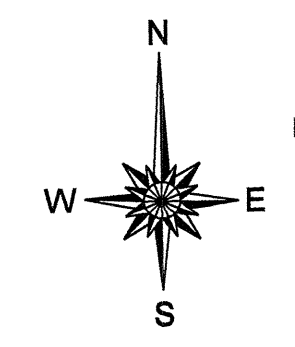


Disclaimer: The GIS Unit's goal is to provide the most accurate information as possible, the magnitude of the data prevents any guarantee of accuracy or completeness. If you find any information that is incorrect, please send your request to the GIS Unit.



ENLARGED MUNICIPAL AND SUBURBAN AREAS
2004 AADT
 ANNUAL AVERAGE DAILY TRAFFIC
CARTERET COUNTY
 NORTH CAROLINA
 GENERATED BY THE
TRAFFIC SURVEY UNIT
 TRANSPORTATION PLANNING BRANCH
 PREPARED BY THE
 NORTH CAROLINA DEPARTMENT OF TRANSPORTATION
 DIVISION OF HIGHWAYS - GIS UNIT
 IN COOPERATION WITH THE
 U.S. DEPARTMENT OF TRANSPORTATION
 FEDERAL HIGHWAY ADMINISTRATION



COPIES OF THIS MAP ARE AVAILABLE TO THE PUBLIC AT A NOMINAL COST. NORTH CAROLINA DEPARTMENT OF TRANSPORTATION DIVISION OF HIGHWAYS - GIS UNIT RALEIGH, N.C. 27699

DATE: 12/14/04

12,000 FOOT GRID BASED ON NORTH CAROLINA PLANE COORDINATE SYSTEM
 POLYCONIC PROJECTION

039

SHEET 2 OF 3