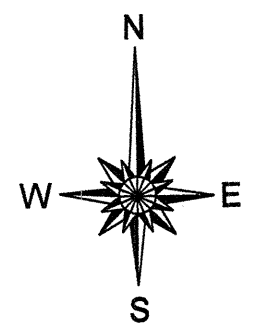
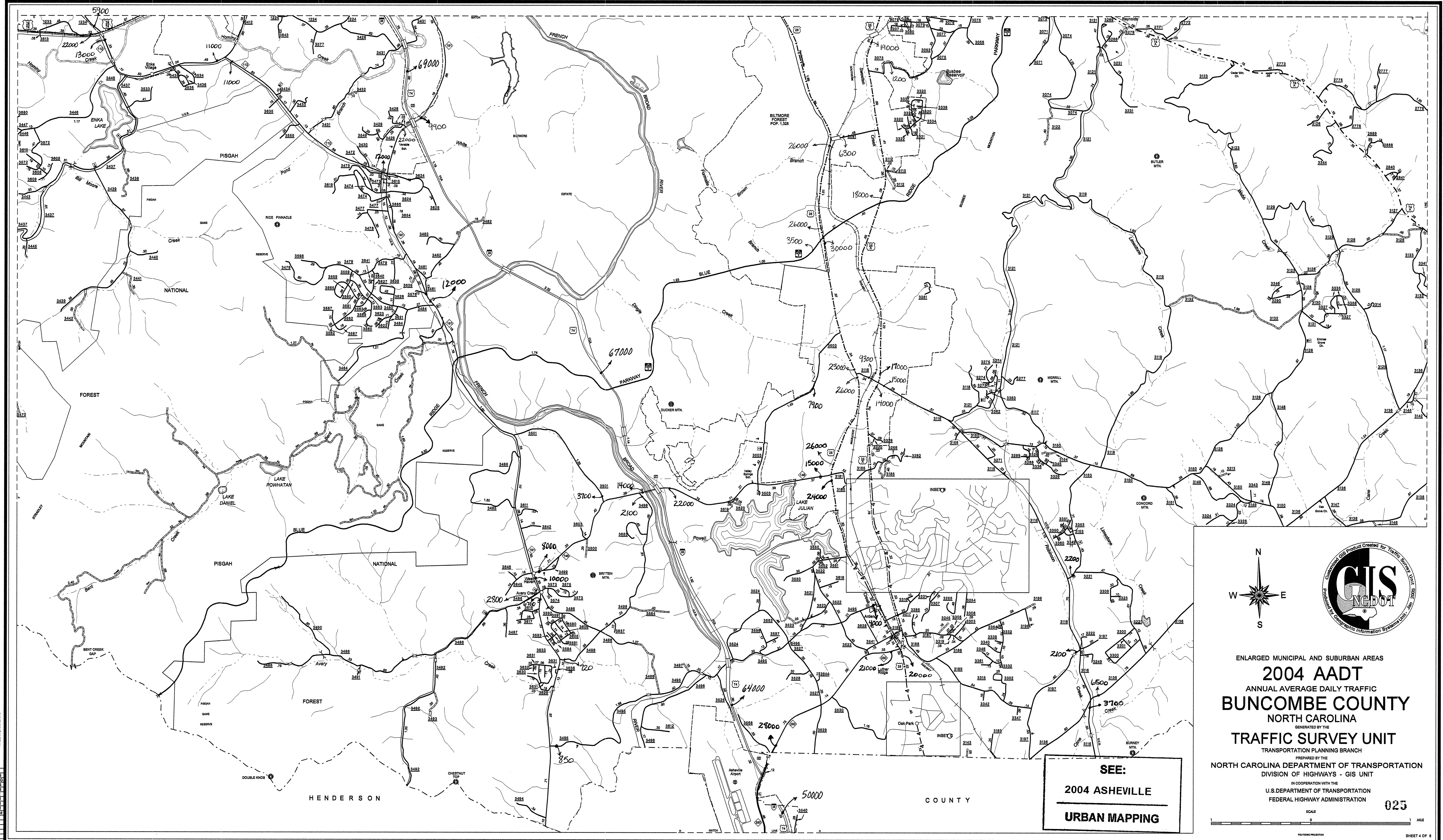


Disclaimer: The GIS Unit's goal is to provide the most accurate information as possible. If you find any information that is incorrect, please send your request to the GIS Unit.

COPIES OF THIS MAP ARE AVAILABLE TO THE PUBLIC AT A MINIMAL COST. APPROXIMATE COSTS:  
1/4" X 36" MAP \$10.00  
1/2" X 72" MAP \$20.00  
1" X 144" MAP \$40.00  
2" X 288" MAP \$80.00  
4" X 576" MAP \$160.00  
8" X 1152" MAP \$320.00  
16" X 2304" MAP \$640.00  
32" X 4608" MAP \$1280.00



ENLARGED MUNICIPAL AND SUBURBAN AREAS  
**2004 AADT**  
ANNUAL AVERAGE DAILY TRAFFIC  
**BUNCOMBE COUNTY**  
NORTH CAROLINA  
GENERATED BY THE  
**TRAFFIC SURVEY UNIT**  
TRANSPORTATION PLANNING BRANCH  
PREPARED BY THE  
NORTH CAROLINA DEPARTMENT OF TRANSPORTATION  
DIVISION OF HIGHWAYS - GIS UNIT  
IN COOPERATION WITH THE  
U.S. DEPARTMENT OF TRANSPORTATION  
FEDERAL HIGHWAY ADMINISTRATION

025

**SEE:**  
**2004 ASHEVILLE**  
**URBAN MAPPING**

SCALE 0 1 MILE  
POLYCONIC PROJECTION SHEET 4 OF 8