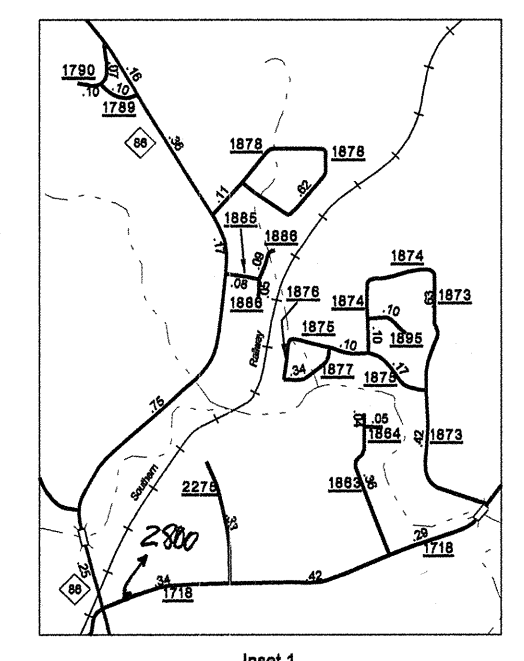
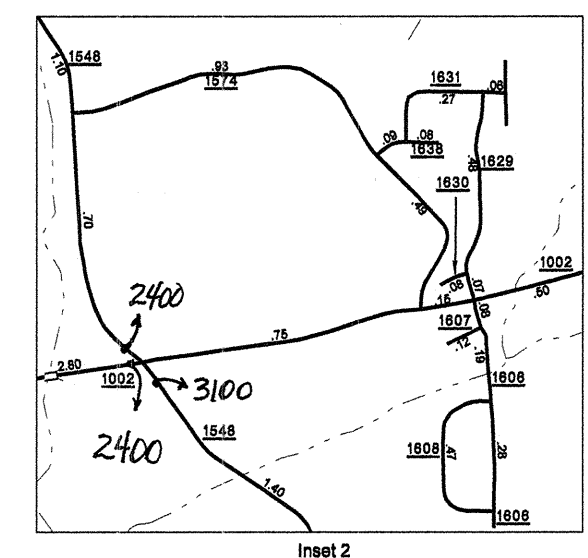
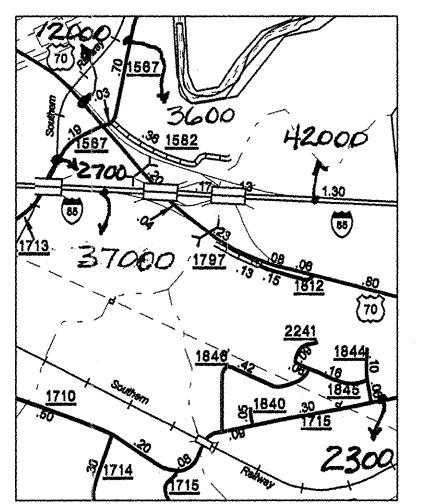
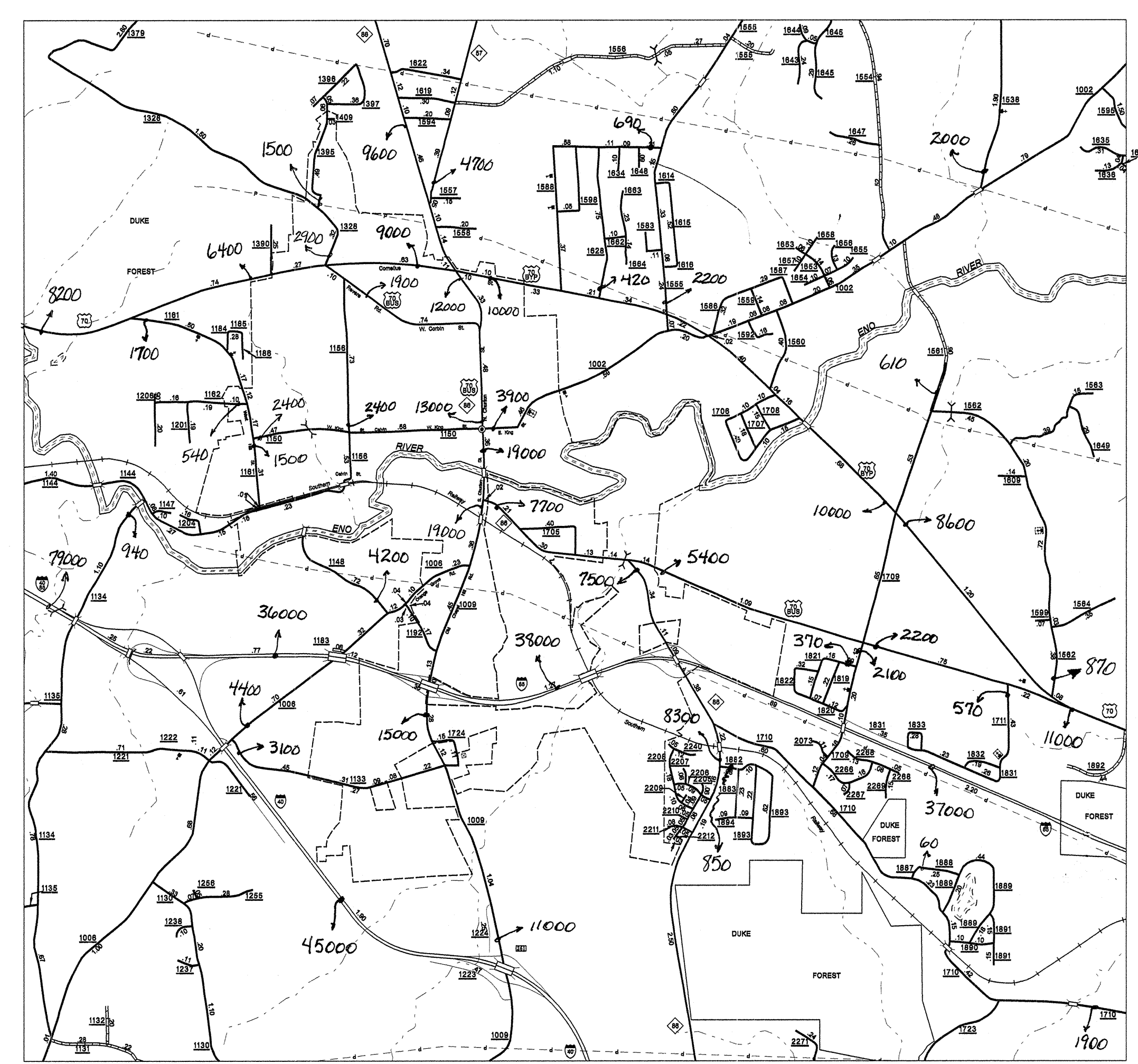
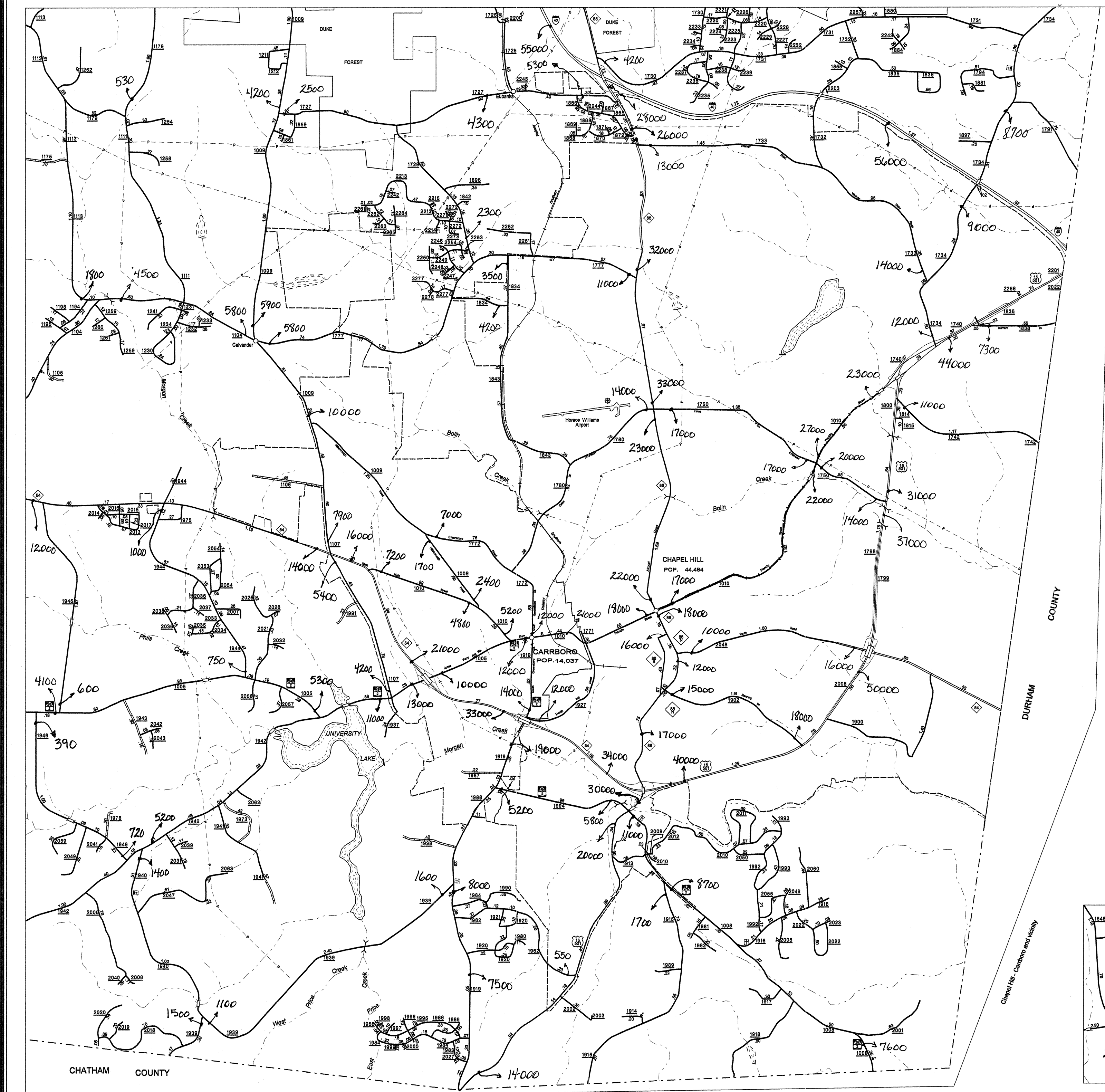
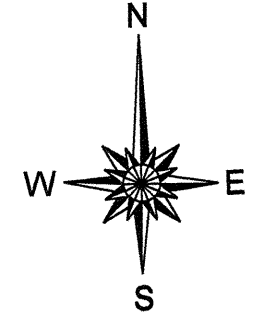
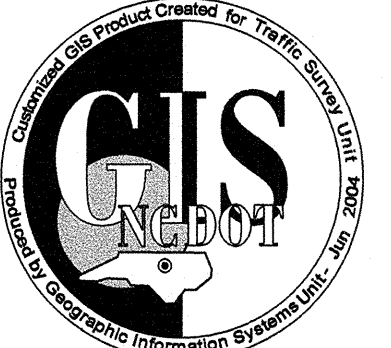


Disclaimer: The GIS User's goal is to provide the most accurate information as possible, the magnitude of the data prevents any guarantee of accuracy or completeness. If you find any information that is incorrect, please send your request to the GIS Unit.

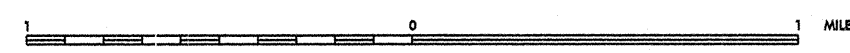
COPIES OF THIS MAP ARE AVAILABLE TO THE PUBLIC AT A MINIMAL COST. N.C. DEPARTMENT OF TRANSPORTATION GEOGRAPHIC INFORMATION SYSTEMS RALEIGH, N.C. 27619



Hillsborough and vicinity



ENLARGED MUNICIPAL AND SUBURBAN AREAS
2003 AADT
ANNUAL AVERAGE DAILY TRAFFIC
ORANGE COUNTY
NORTH CAROLINA
GENERATED BY THE
TRAFFIC SURVEY UNIT
TRANSPORTATION PLANNING BRANCH
PREPARED BY THE
NORTH CAROLINA DEPARTMENT OF TRANSPORTATION
DIVISION OF HIGHWAYS - GIS UNIT
IN COOPERATION WITH THE
U.S. DEPARTMENT OF TRANSPORTATION
FEDERAL HIGHWAY ADMINISTRATION



SCALE
0 1 MILE

197
SHEET 2 OF 2