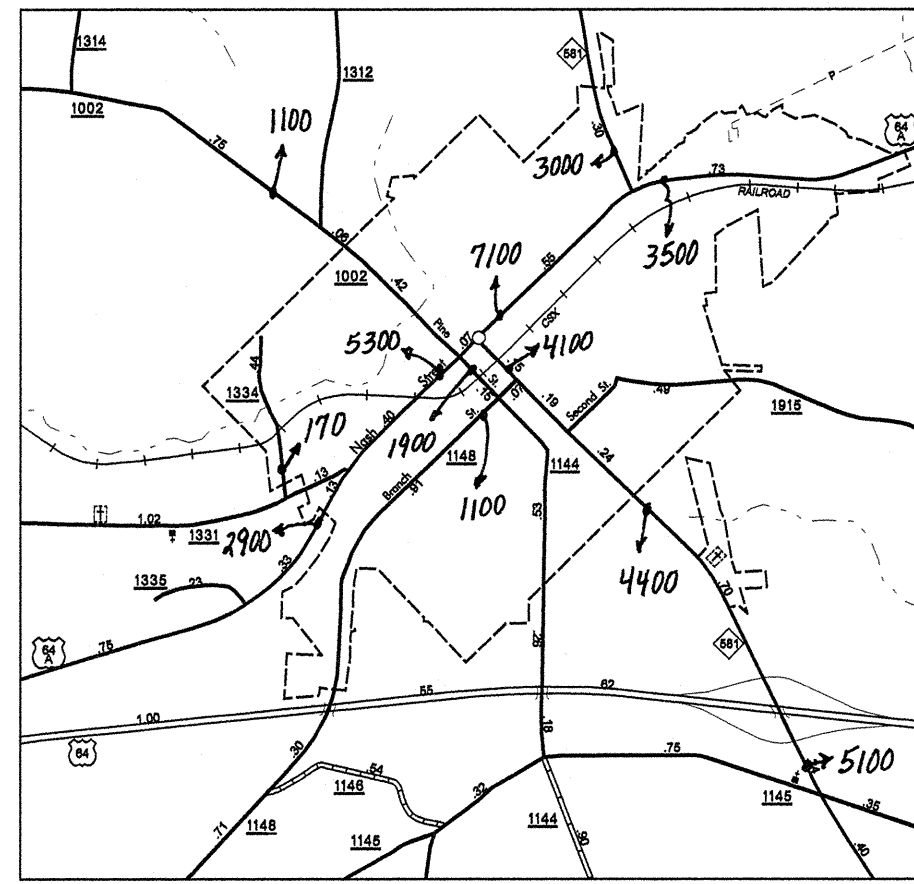
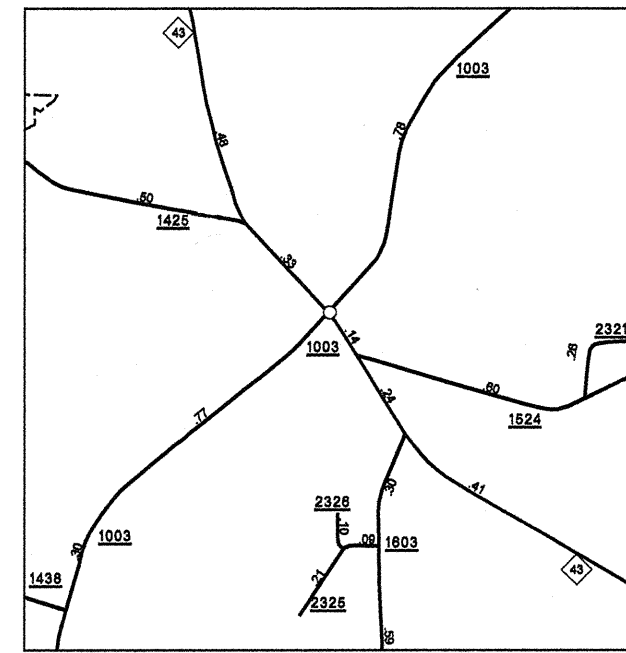


COPIES OF THIS MAP ARE AVAILABLE TO THE PUBLIC AT A MINIMAL COST.  
 N.C. DEPARTMENT OF TRANSPORTATION  
 GEOGRAPHIC INFORMATION SYSTEMS  
 PAULSON, N.C. 27640

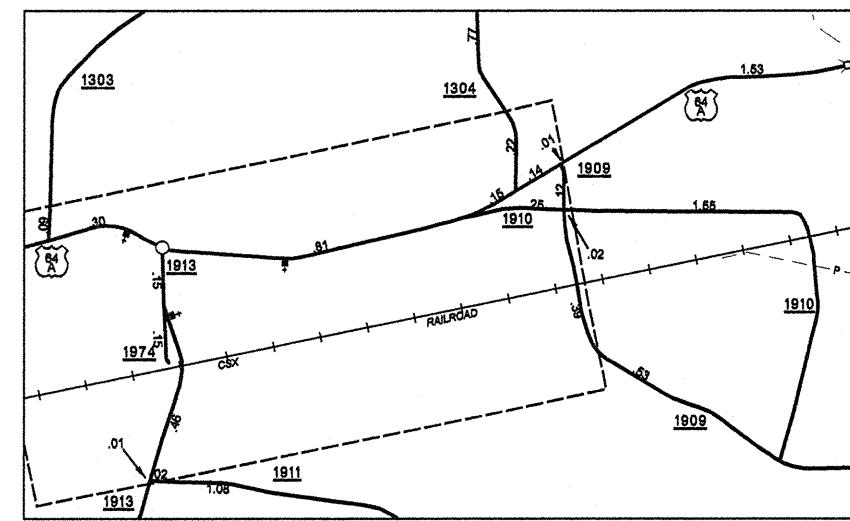
10/01/01
10/02/01
11/02/01
11/04/01
11/08/01
11/14/01
11/27/01
12/07/01



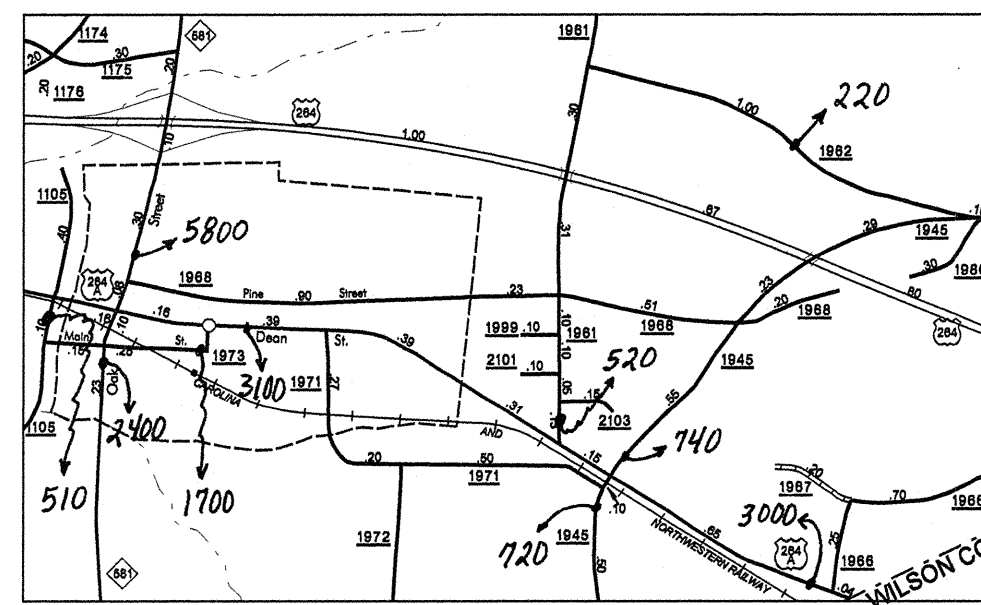
SPRING HOPE  
POP. 1,316



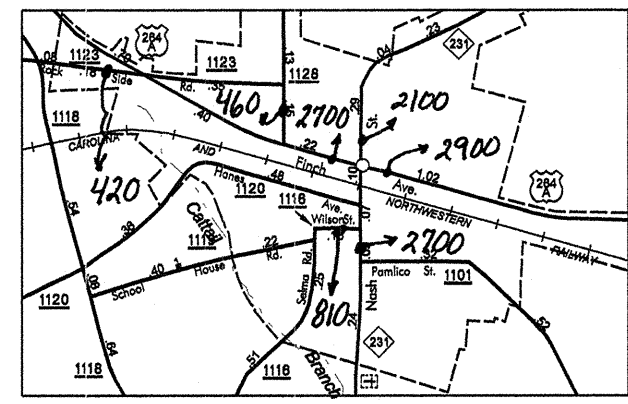
RED OAK  
POP. 290



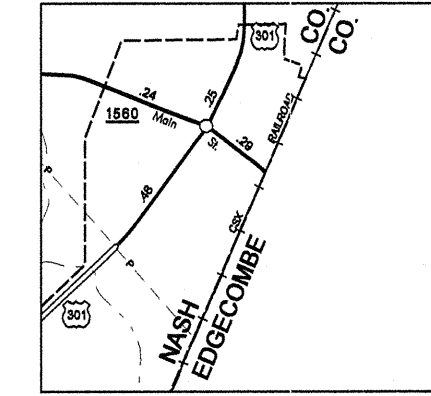
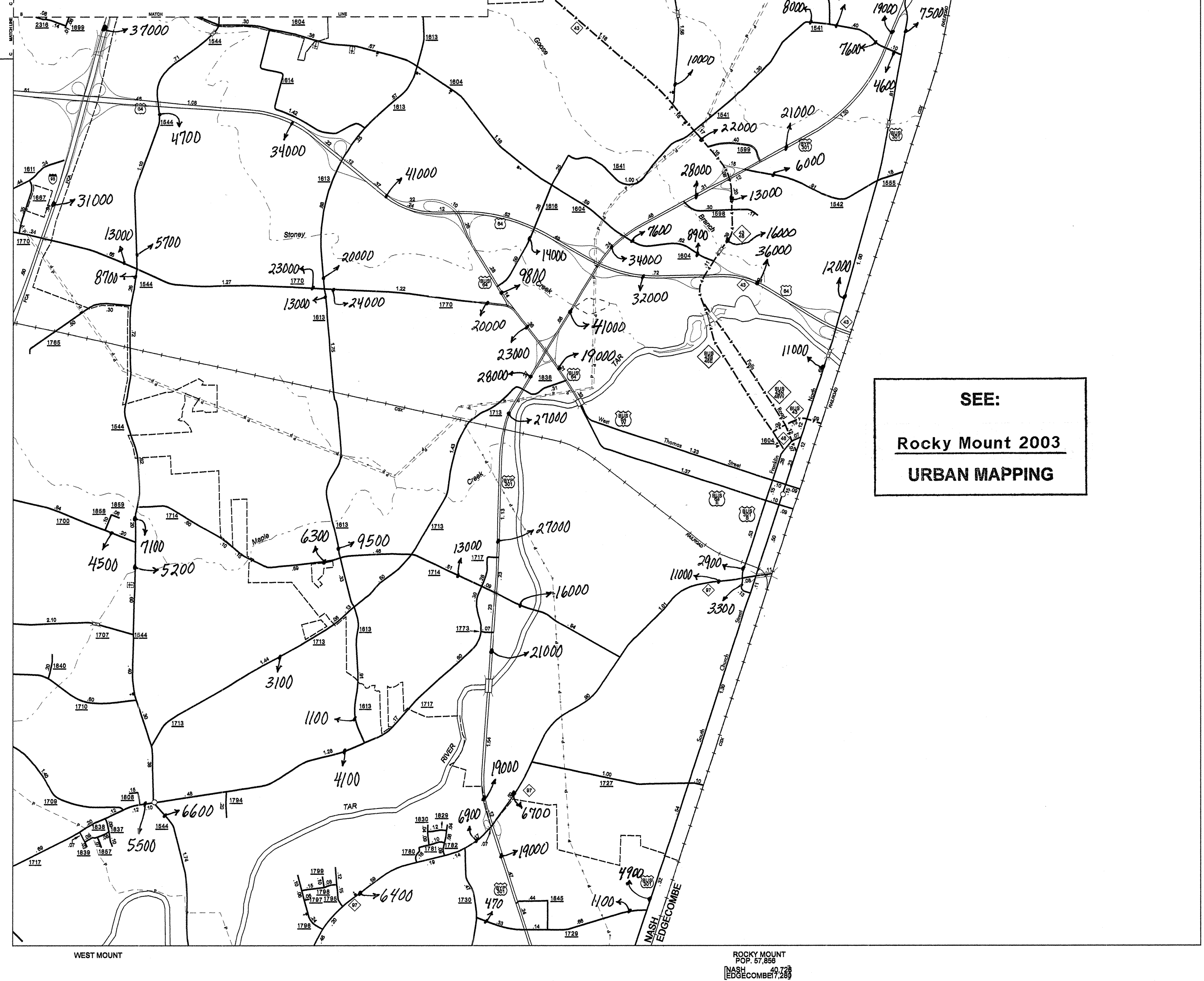
MOMEYER  
POP. 278



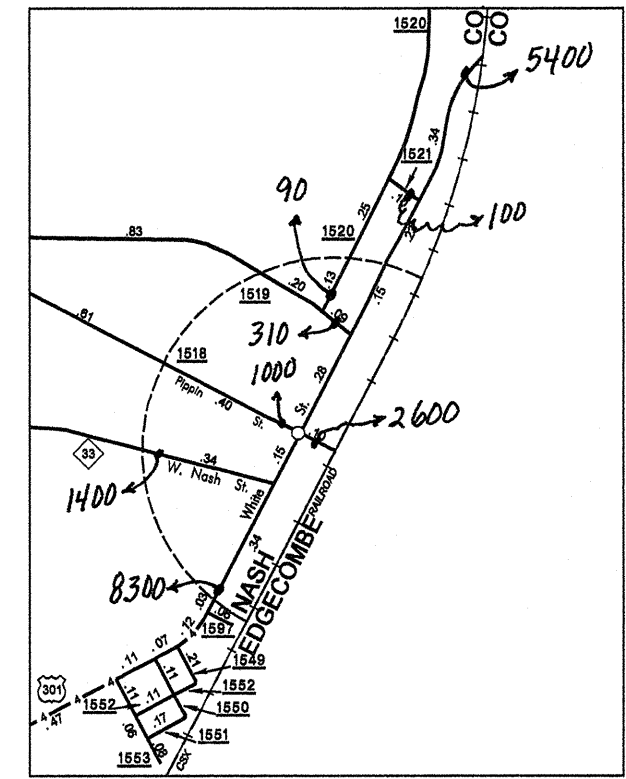
BAILEY  
POP. 582



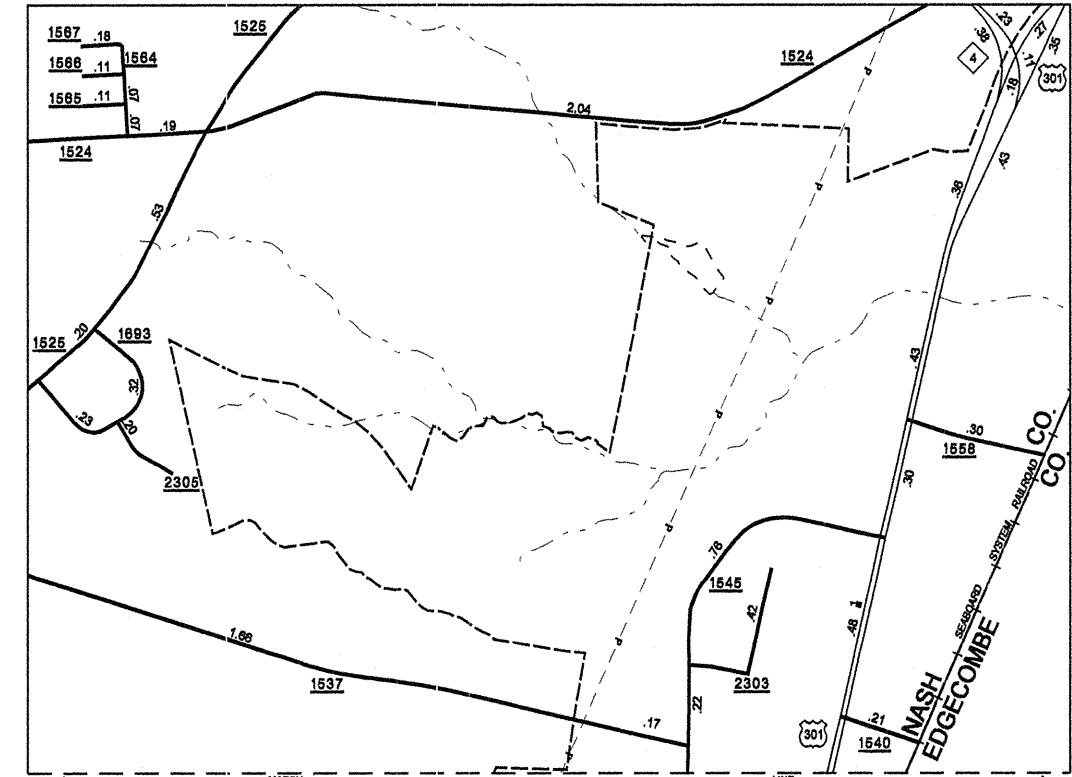
MIDDLESEX  
POP. 870



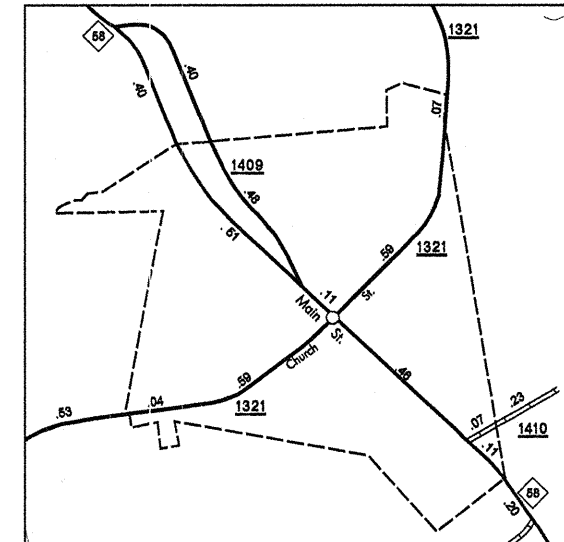
ROCKY MOUNT



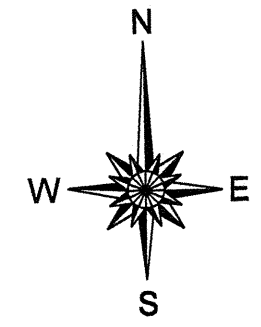
WHITAKERS  
POP. 848  
[EDGECOMBE 21]



ROCKY MOUNT



CASTALIA  
POP. 288



ENLARGED MUNICIPAL AND SUBURBAN AREAS  
**2003 AADT**  
 ANNUAL AVERAGE DAILY TRAFFIC  
**NASH COUNTY**  
 NORTH CAROLINA  
 GENERATED BY THE  
**TRAFFIC SURVEY UNIT**  
 TRANSPORTATION PLANNING BRANCH  
 PREPARED BY THE  
 NORTH CAROLINA DEPARTMENT OF TRANSPORTATION  
 DIVISION OF HIGHWAYS - GIS UNIT  
 IN COOPERATION WITH THE  
 U.S. DEPARTMENT OF TRANSPORTATION  
 FEDERAL HIGHWAY ADMINISTRATION  
 SCALE

10,000 FOOT GRID BASED ON NORTH CAROLINA PLANE COORDINATE SYSTEM  
 POLYGONIC PROJECTION