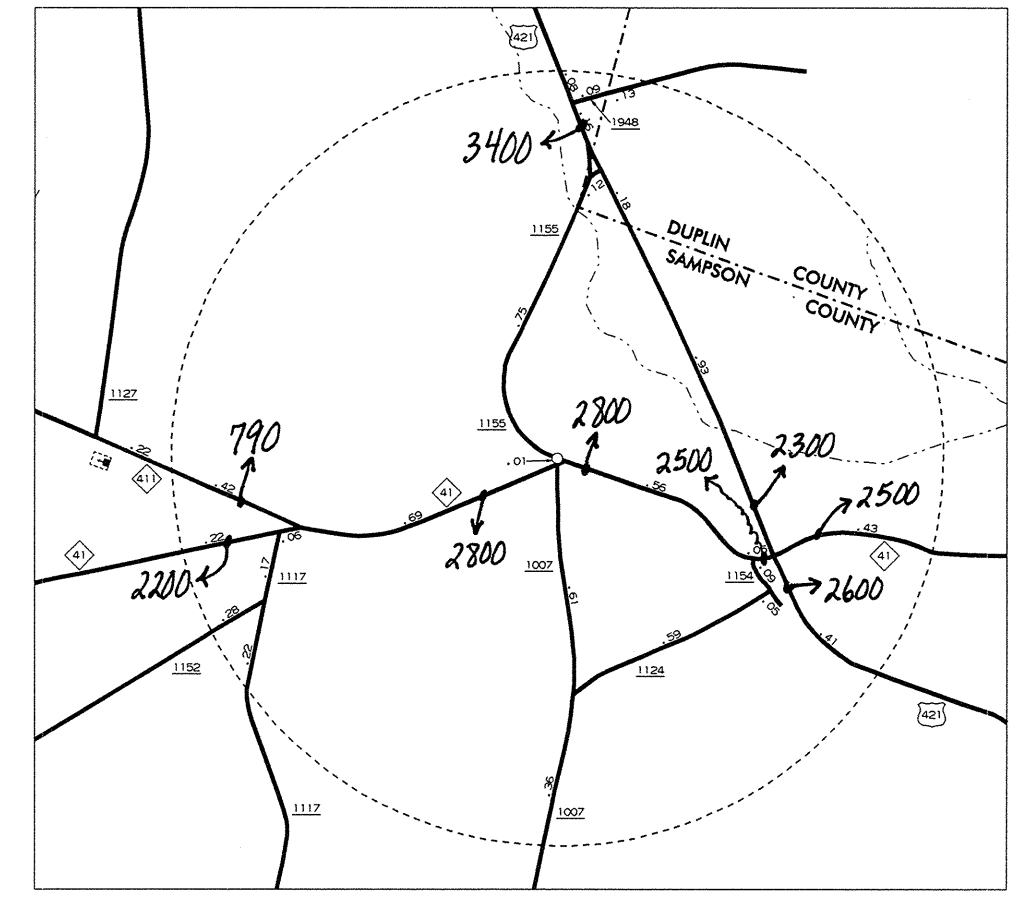
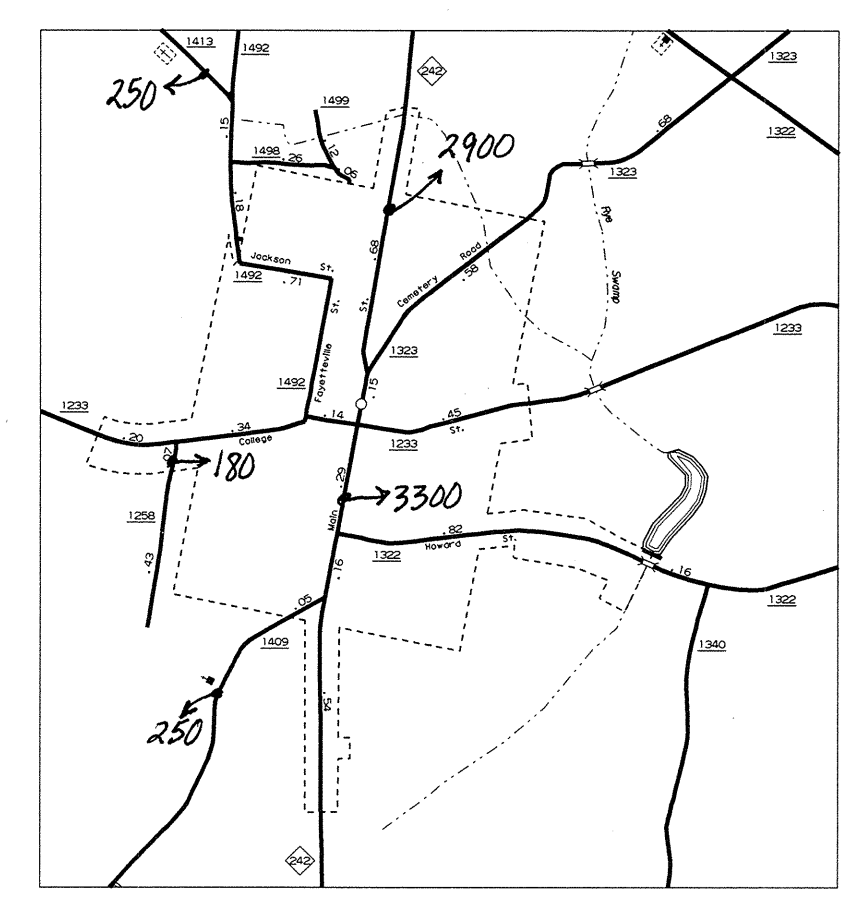


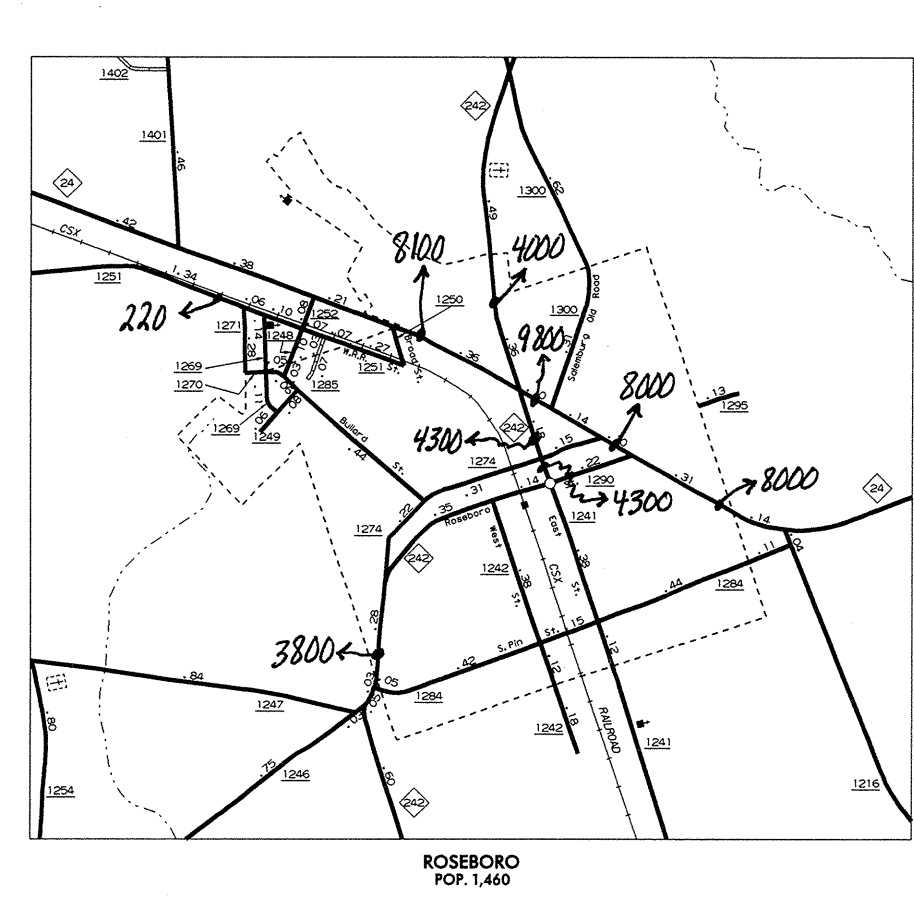
CLINTON
POP. 8,698



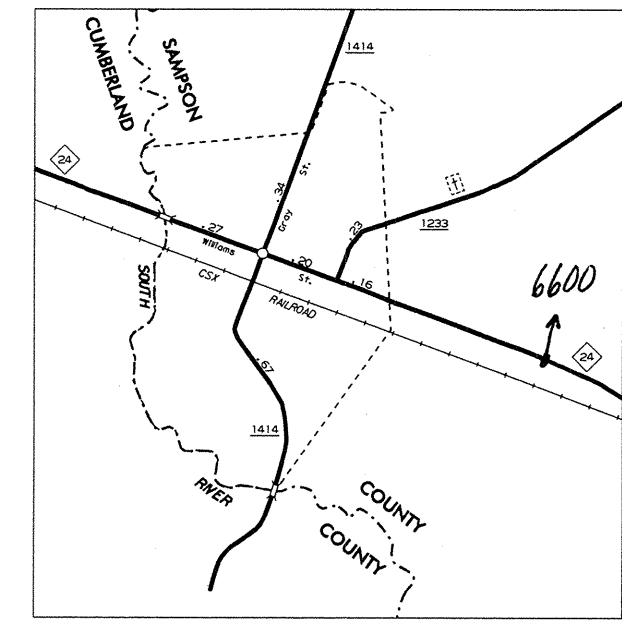
HARRELLS
POP. 187



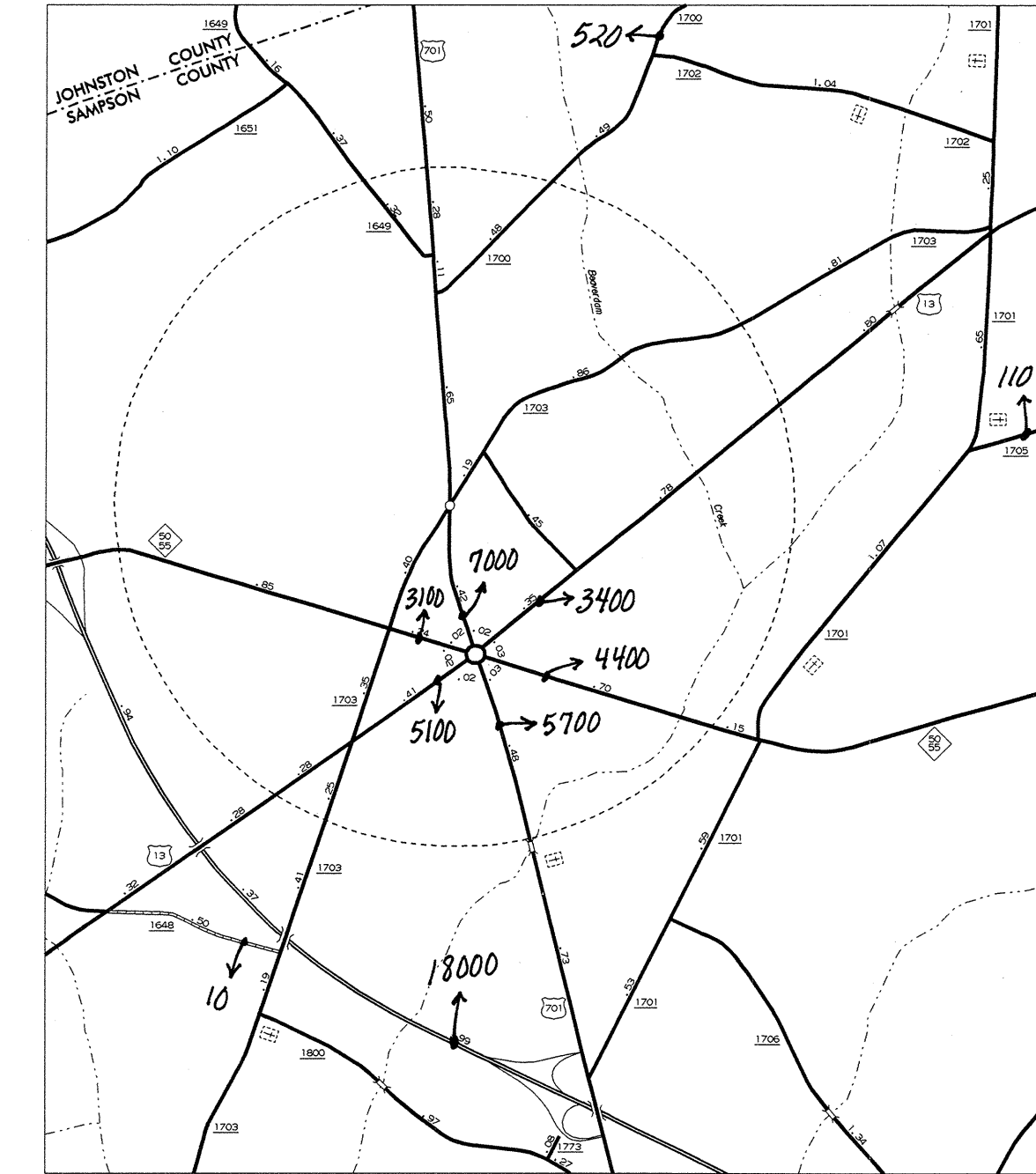
SALEMBURG
POP. 403



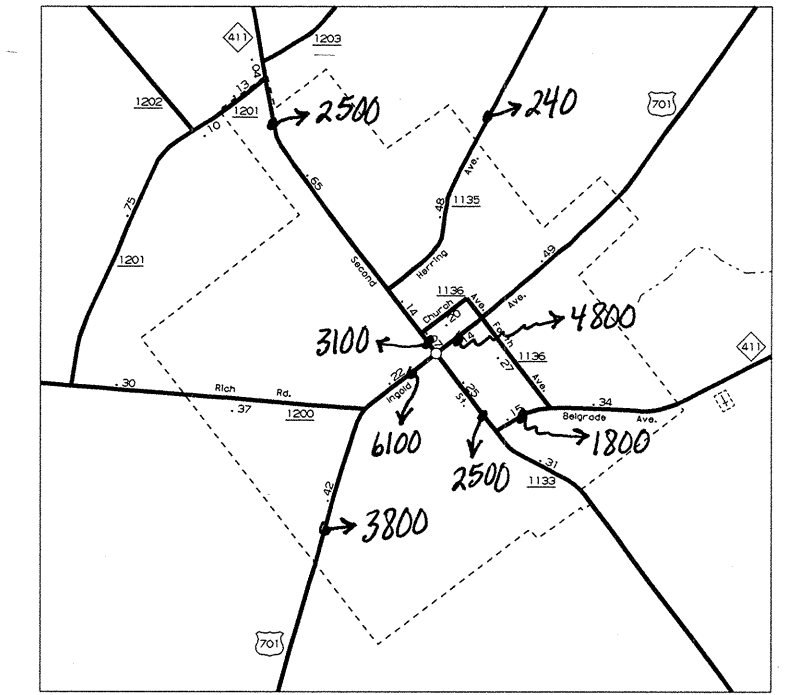
ROSEBORO
POP. 1,460



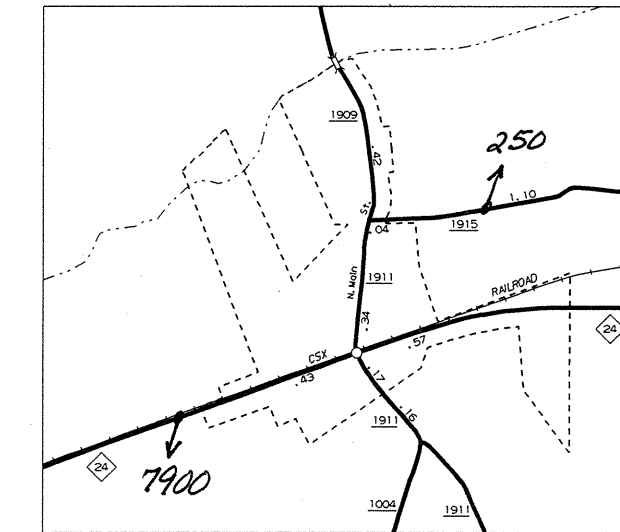
AUTRYVILLE
POP. 183



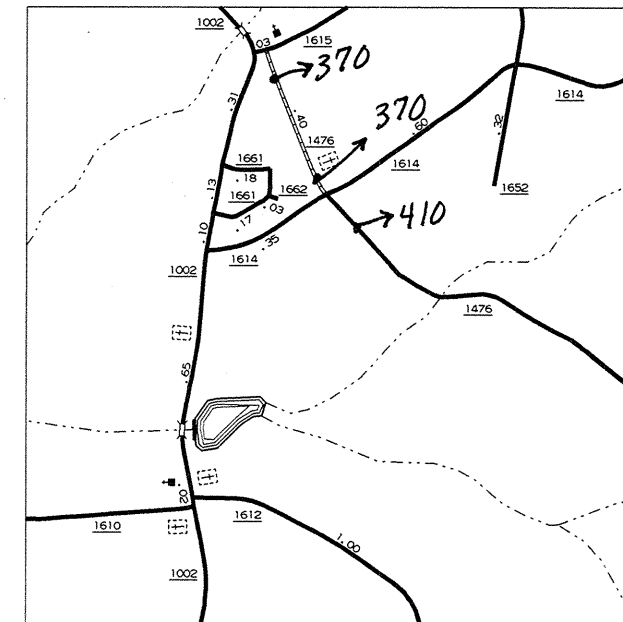
NEWTON GROVE
POP. 215



GARLAND
POP. 744

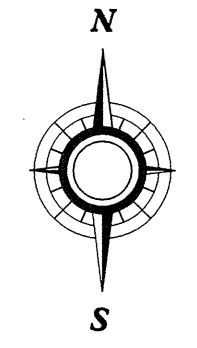


TURKEY
POP. 276



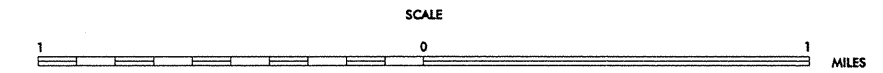
INSET 1

2000
ANNUAL AVERAGE
DAILY TRAFFIC



N.C. Department of Transportation
Statewide Planning Branch
Traffic Survey Unit
1554 Mail Service Center
Raleigh, NC 27699-1554

ENLARGED MUNICIPAL AND SUBURBAN AREAS
SAMPSON COUNTY
NORTH CAROLINA
PREPARED BY THE
NORTH CAROLINA DEPARTMENT OF TRANSPORTATION
DIVISION OF HIGHWAYS - GIS UNIT
IN COOPERATION WITH THE
U.S. DEPARTMENT OF TRANSPORTATION
FEDERAL HIGHWAY ADMINISTRATION



11,000 FOOT GRID BASED ON NORTH CAROLINA PLANE COORDINATE SYSTEM
PHOTOCHEMICAL

COPIES OF THIS MAP ARE AVAILABLE
FOR PUBLIC AT A NOMINAL COST.
FOR MORE INFORMATION CONTACT
DIVISION OF HIGHWAYS
1554 MAIL SERVICE CENTER
RALEIGH, NORTH CAROLINA 27699-1554

REVISED
11-99 JALB