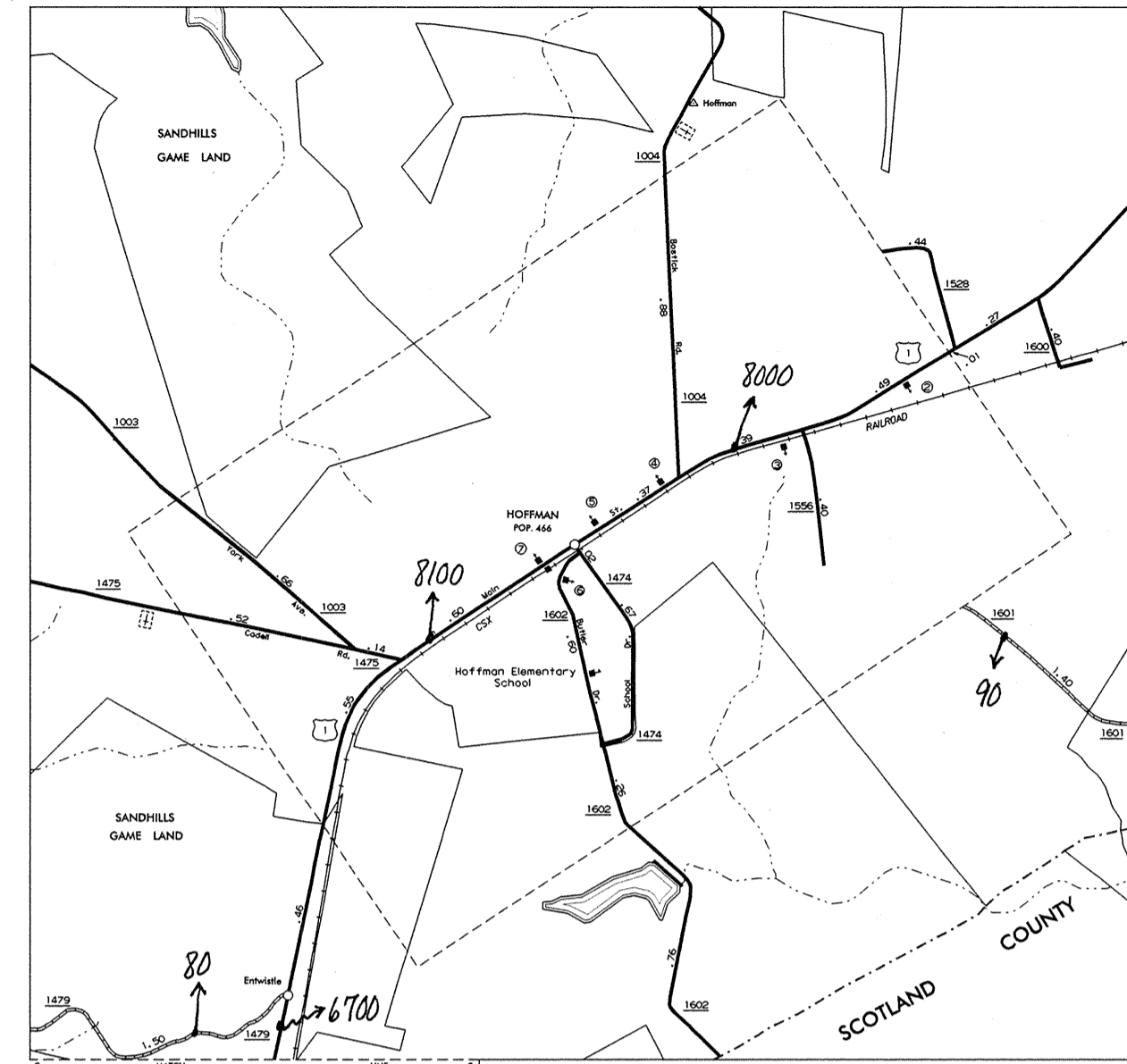
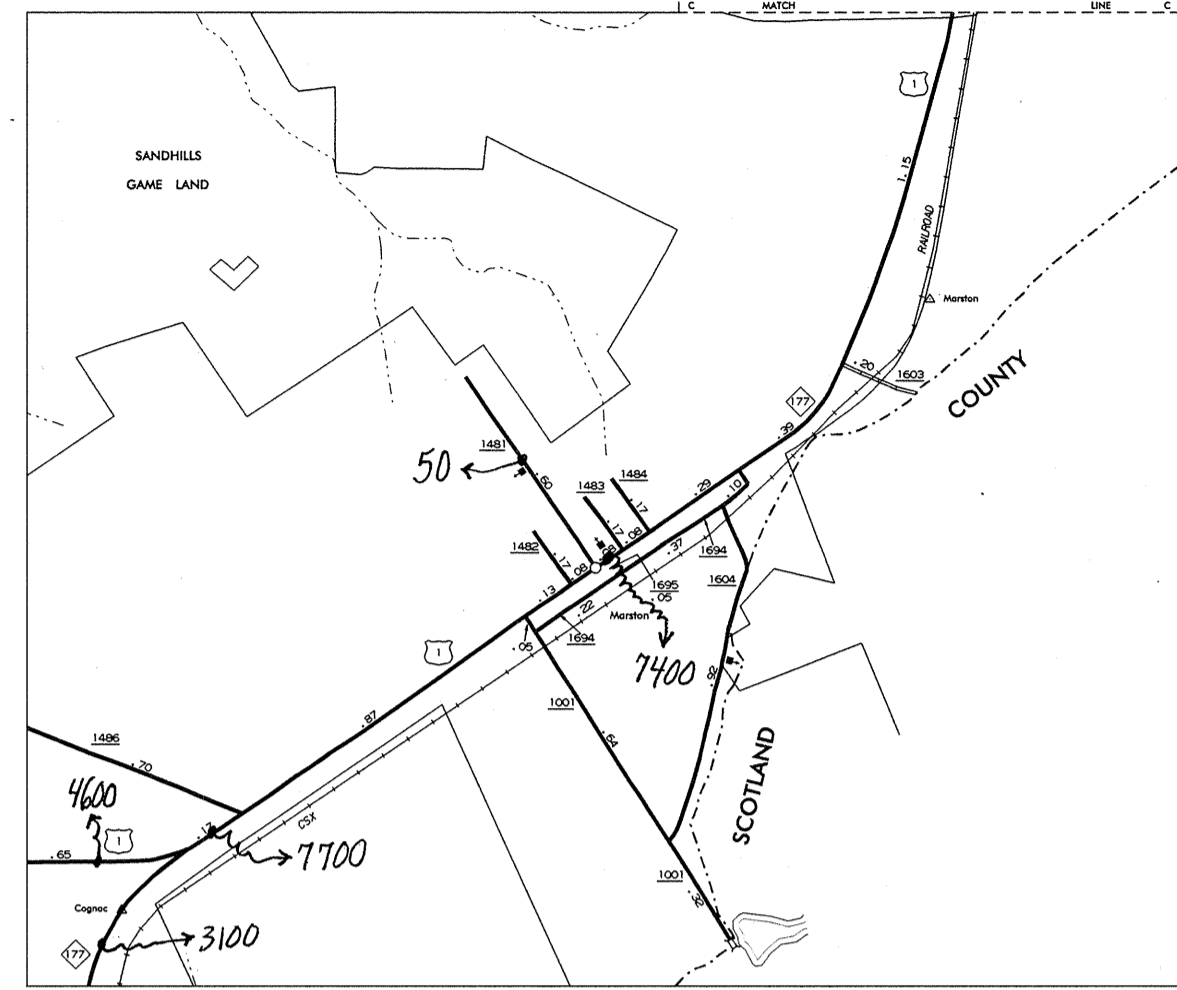


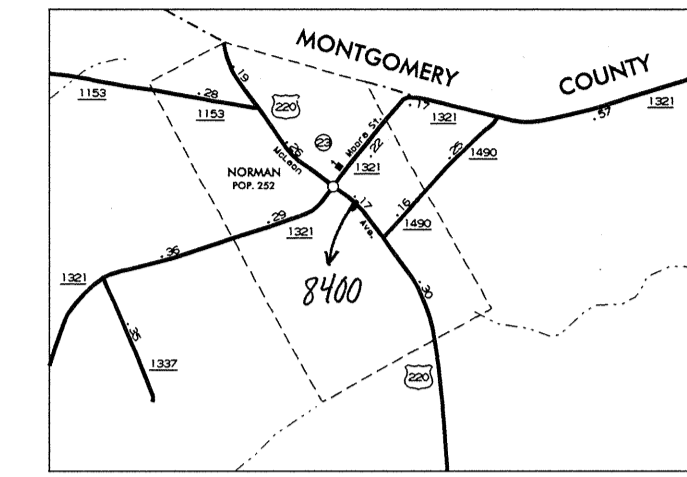
ELLERBE
POP. 1,161



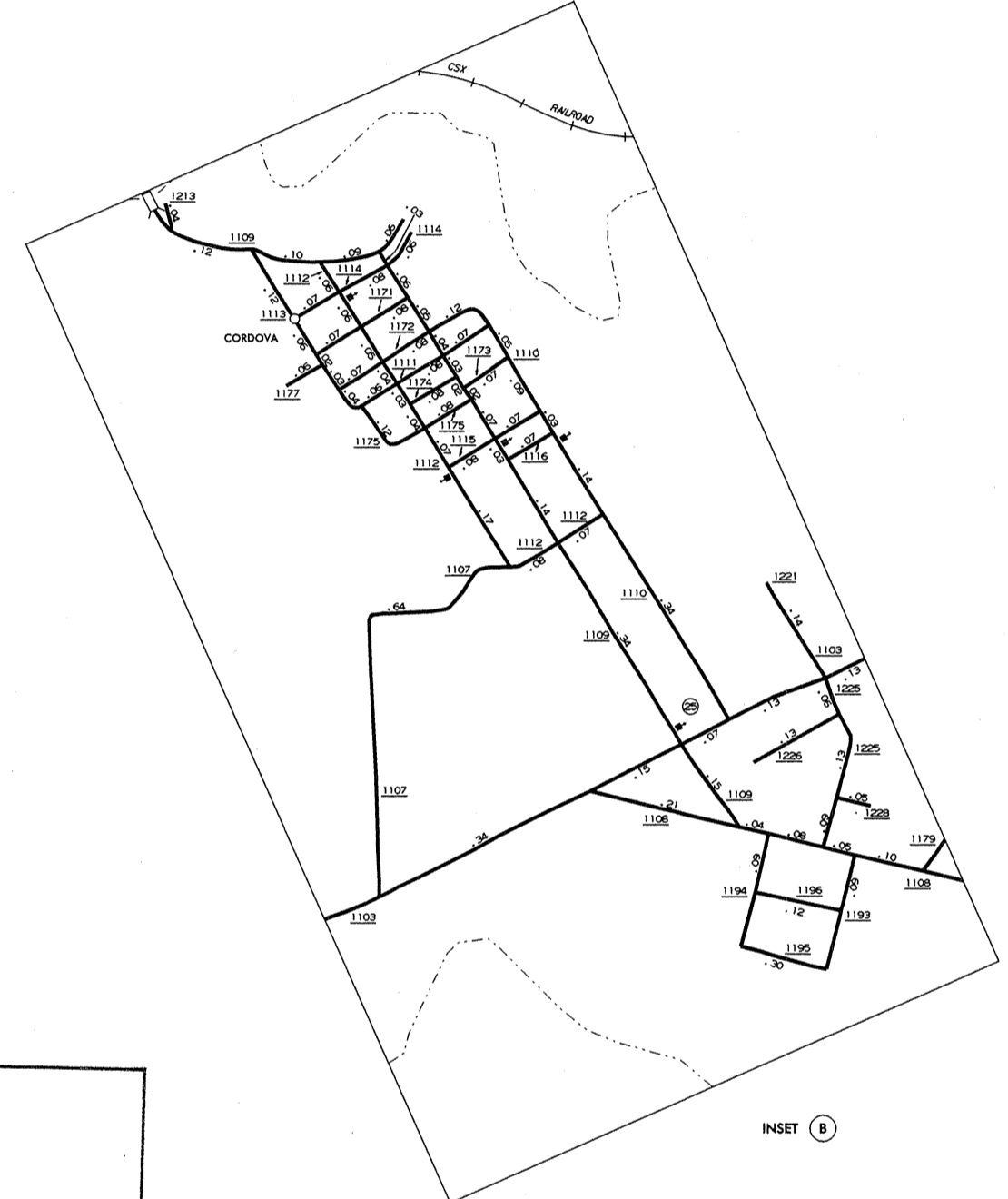
HOFFMAN
POP. 466



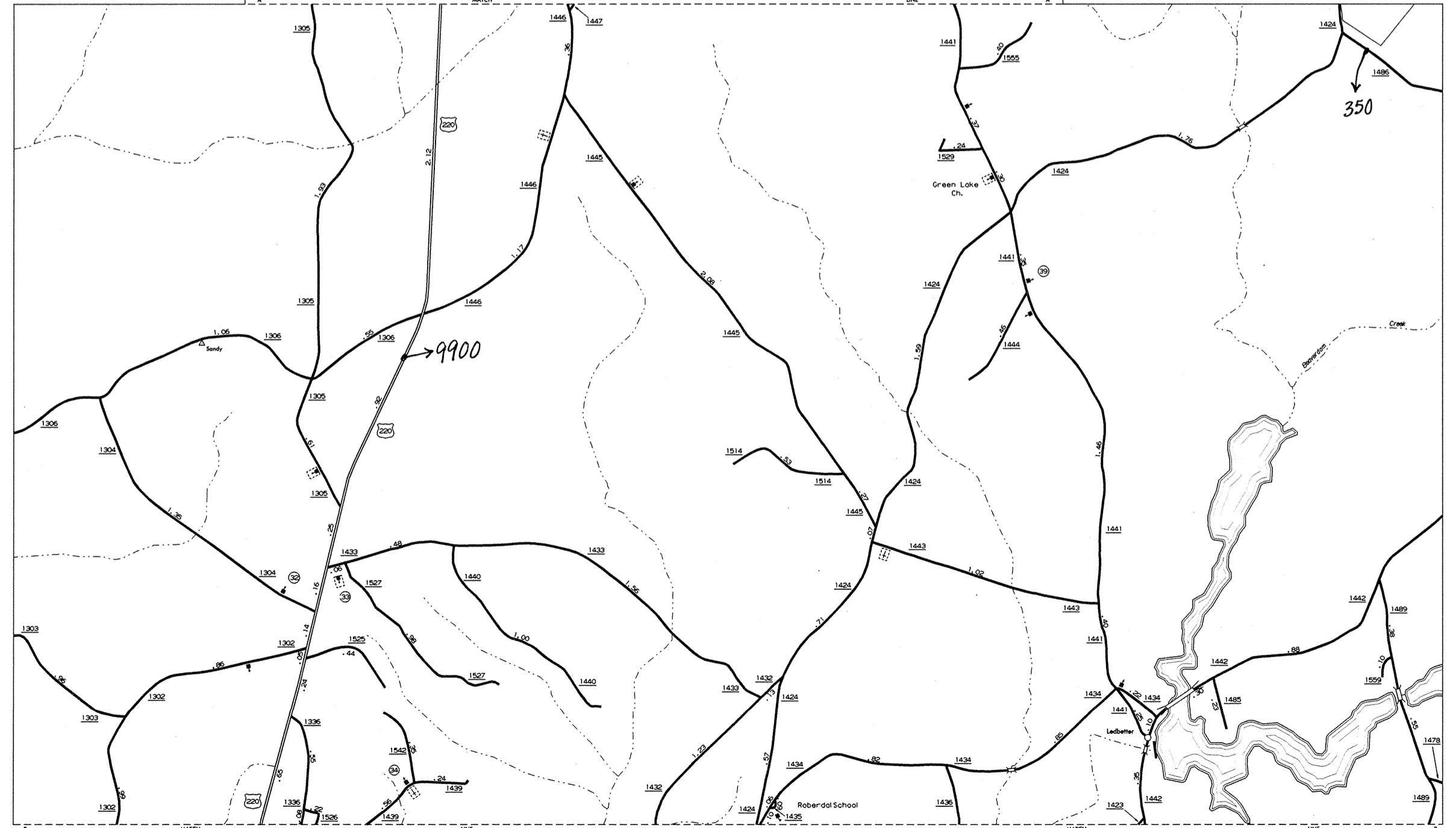
MARSTON



NORMAN
POP. 252



INSET B



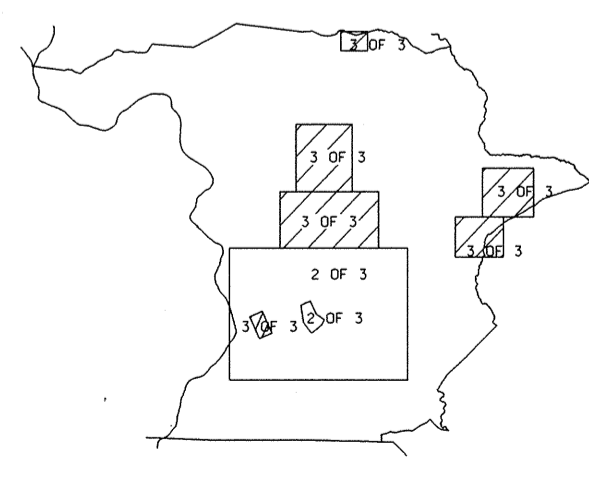
LEDBETTER AND VICINITY

N.C. Department of Transportation
Statewide Planning Branch
Traffic Survey Unit
1554 Mail Service Center
Raleigh, NC 27689-1554

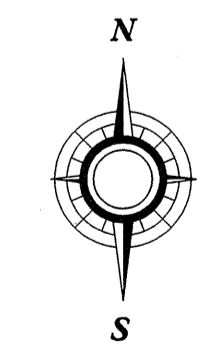
2000
ANNUAL AVERAGE
DAILY TRAFFIC

SCALE
0 0.5 MILE

ENLARGED MUNICIPAL AND SUBURBAN AREAS
RICHMOND COUNTY
NORTH CAROLINA
PREPARED BY THE
NORTH CAROLINA DEPARTMENT OF TRANSPORTATION
DIVISION OF HIGHWAYS - GIS UNIT
IN COOPERATION WITH THE
U.S. DEPARTMENT OF TRANSPORTATION
FEDERAL HIGHWAY ADMINISTRATION



SHEET KEY



SCALE
0 1 MILES

REVISIONS
DATE
BY
REASON
1-1-99
LM
1-1-99
6-6-98
LM
1-1-99
LM
3-21-99

COPY OF THIS MAP IS AVAILABLE
TO THE PUBLIC AT A NOMINAL COST.
N.C. DEPARTMENT OF TRANSPORTATION
DIVISION OF HIGHWAYS
1554 MAIL SERVICE CENTER
RALEIGH, NORTH CAROLINA 27689