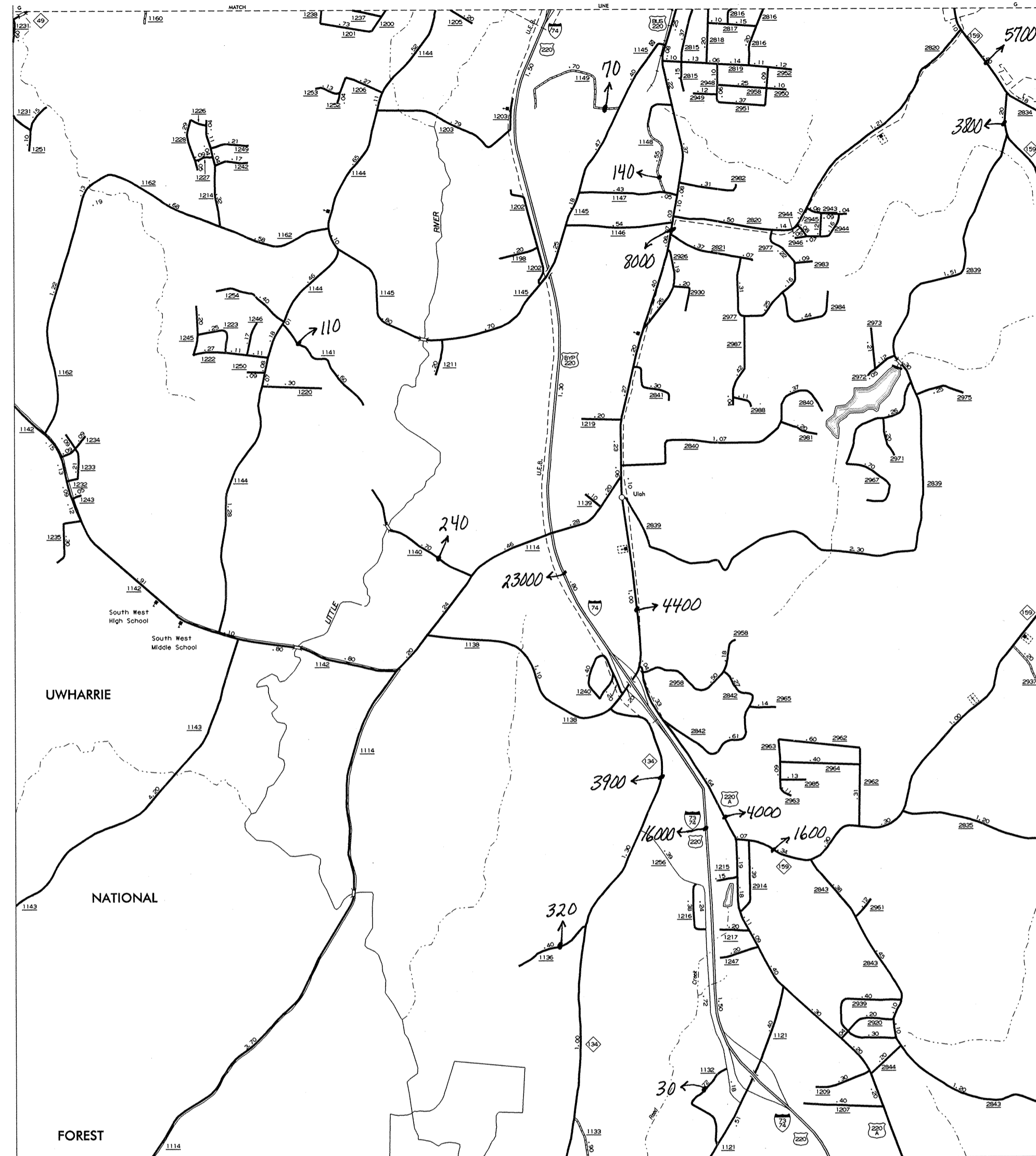
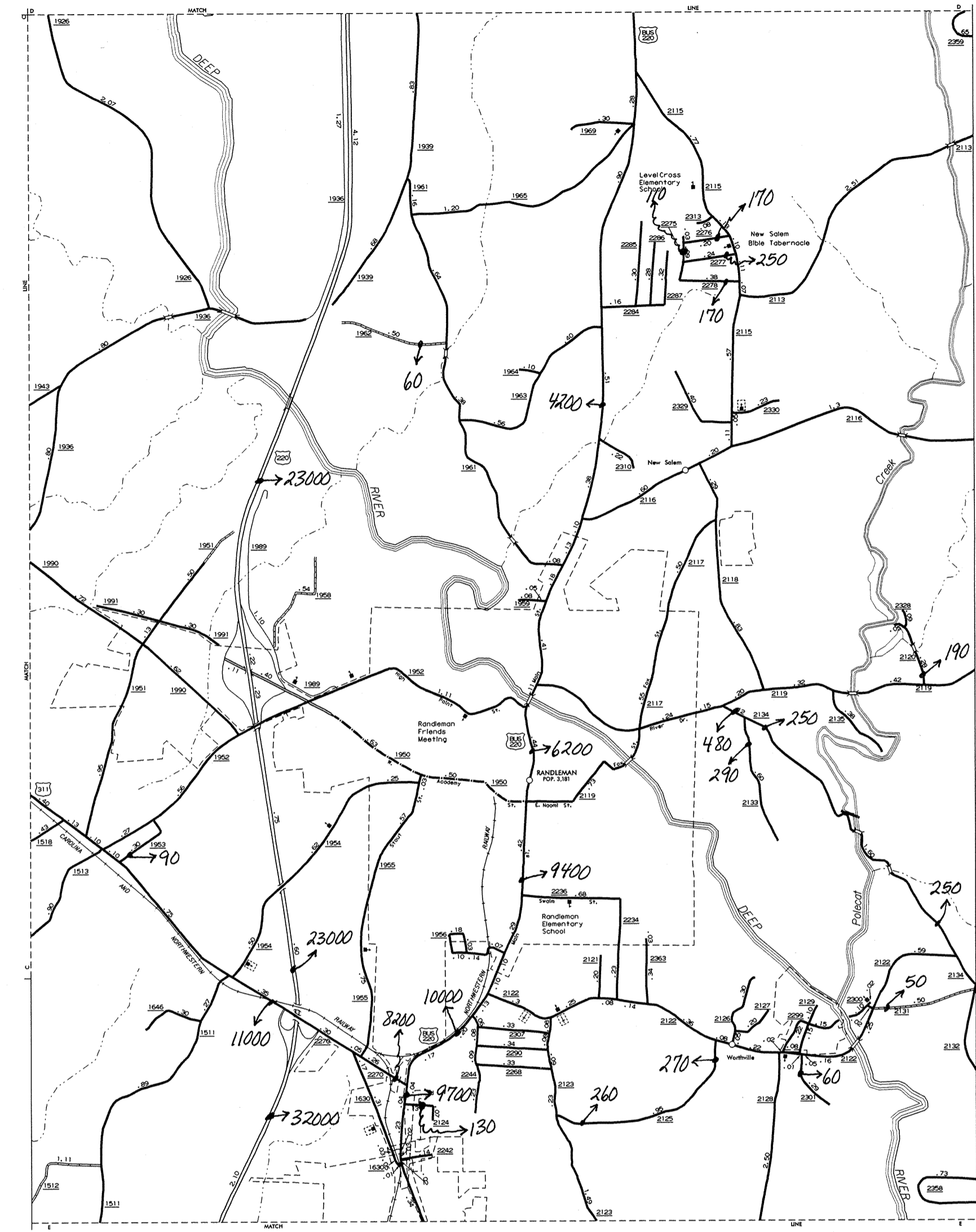


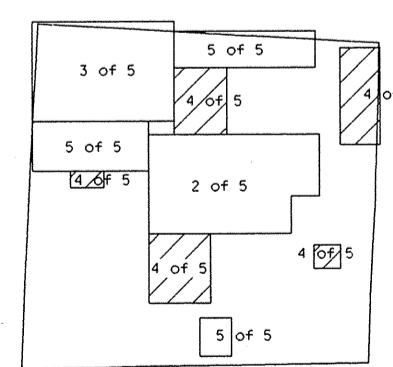
LIBERTY AND STALEY



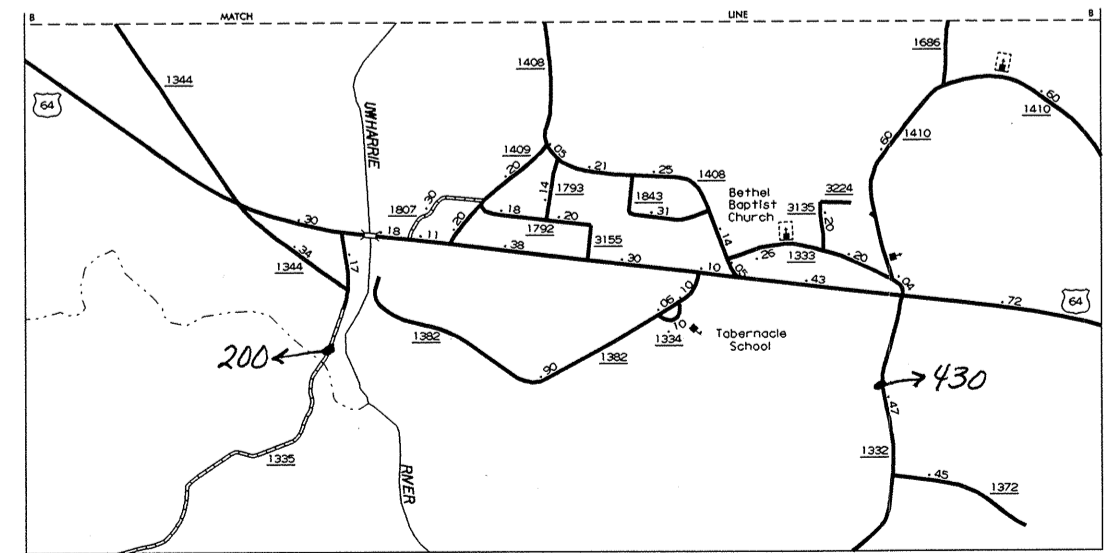
ULAH



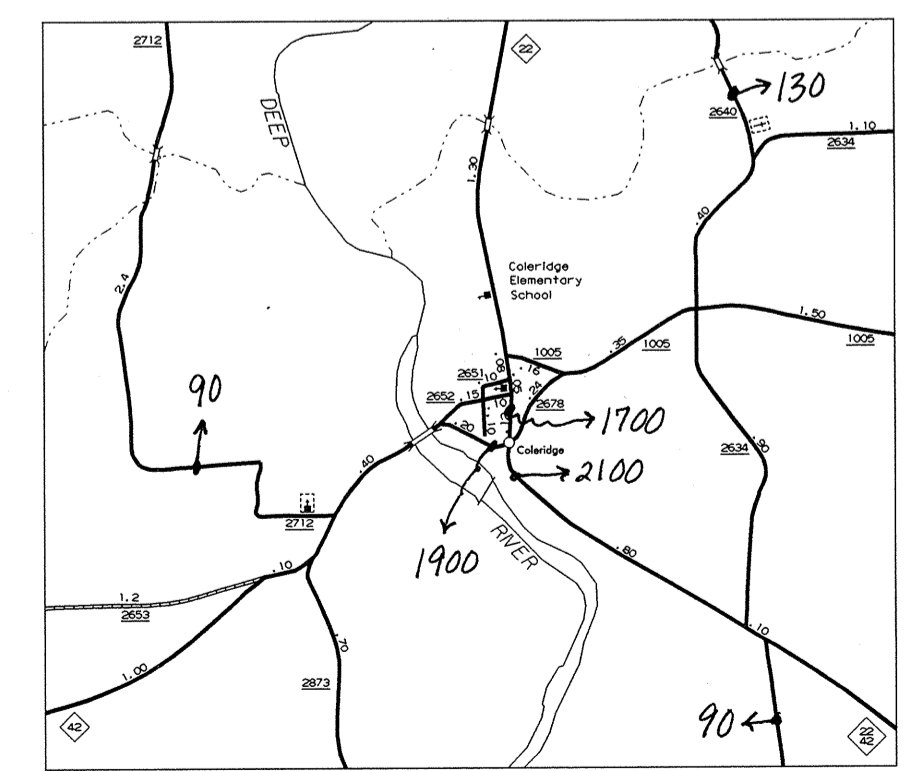
RANDLEMAN



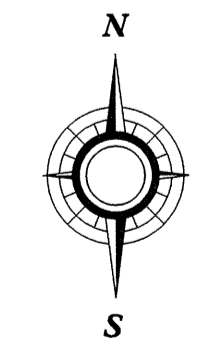
2000
ANNUAL AVERAGE
DAILY TRAFFIC



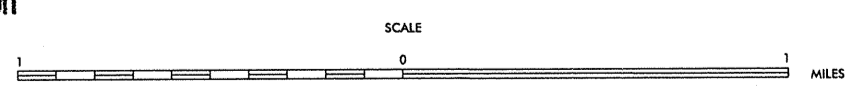
INSET 1



COLERIDGE



ENLARGED MUNICIPAL AND SUBURBAN AREAS
RANDOLPH COUNTY
NORTH CAROLINA
PREPARED BY THE
NORTH CAROLINA DEPARTMENT OF TRANSPORTATION
DIVISION OF HIGHWAYS - GIS UNIT
IN COOPERATION WITH THE
U.S. DEPARTMENT OF TRANSPORTATION
FEDERAL HIGHWAY ADMINISTRATION



N.C. Department of Transportation
Statewide Planning Branch
Traffic Survey Unit
1554 Mail Service Center
Raleigh, NC 27699-1554

10,000 FOOT GRID BASED ON NORTH CAROLINA PLANE COORDINATE SYSTEM

207
SHEET 4 OF 5

REVISED
7-95
5-97
1-98
6-98
1-99
LM 3319