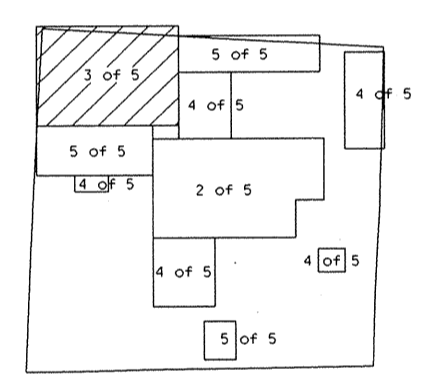
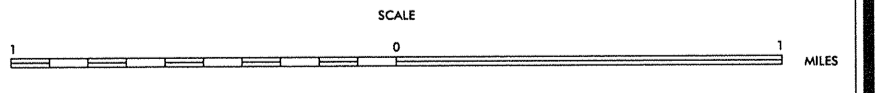


N.C. Department of Transportation
 Statewide Planning Branch
 Traffic Survey Unit
 1554 Mail Service Center
 Raleigh, NC 27699-1554

2000
 ANNUAL AVERAGE
 DAILY TRAFFIC



ENLARGED MUNICIPAL AND SUBURBAN AREAS
RANDOLPH COUNTY
 NORTH CAROLINA
 PREPARED BY THE
 NORTH CAROLINA DEPARTMENT OF TRANSPORTATION
 DIVISION OF HIGHWAYS - GIS UNIT
 IN COOPERATION WITH THE
 U.S. DEPARTMENT OF TRANSPORTATION
 FEDERAL HIGHWAY ADMINISTRATION



10,000 FOOT GRID BASED ON NORTH CAROLINA PLANE COORDINATE SYSTEM
 206
 SHEET 3 OF 5

REVISIONS
 1-1-92 RL
 5-20-97
 1-1-98
 8-6-98
 1-1-99
 1-1-99
 1-1-99
 1-1-99