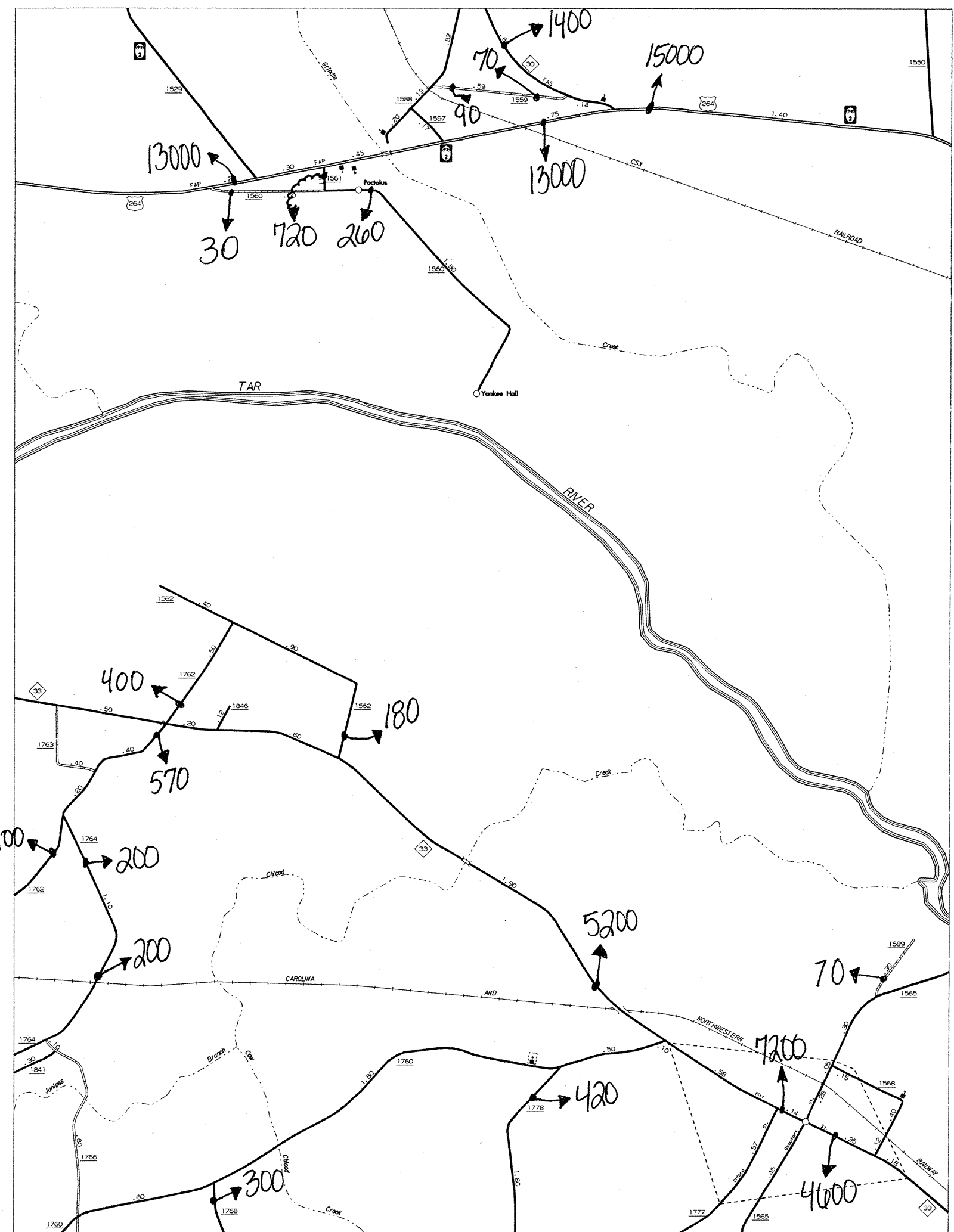
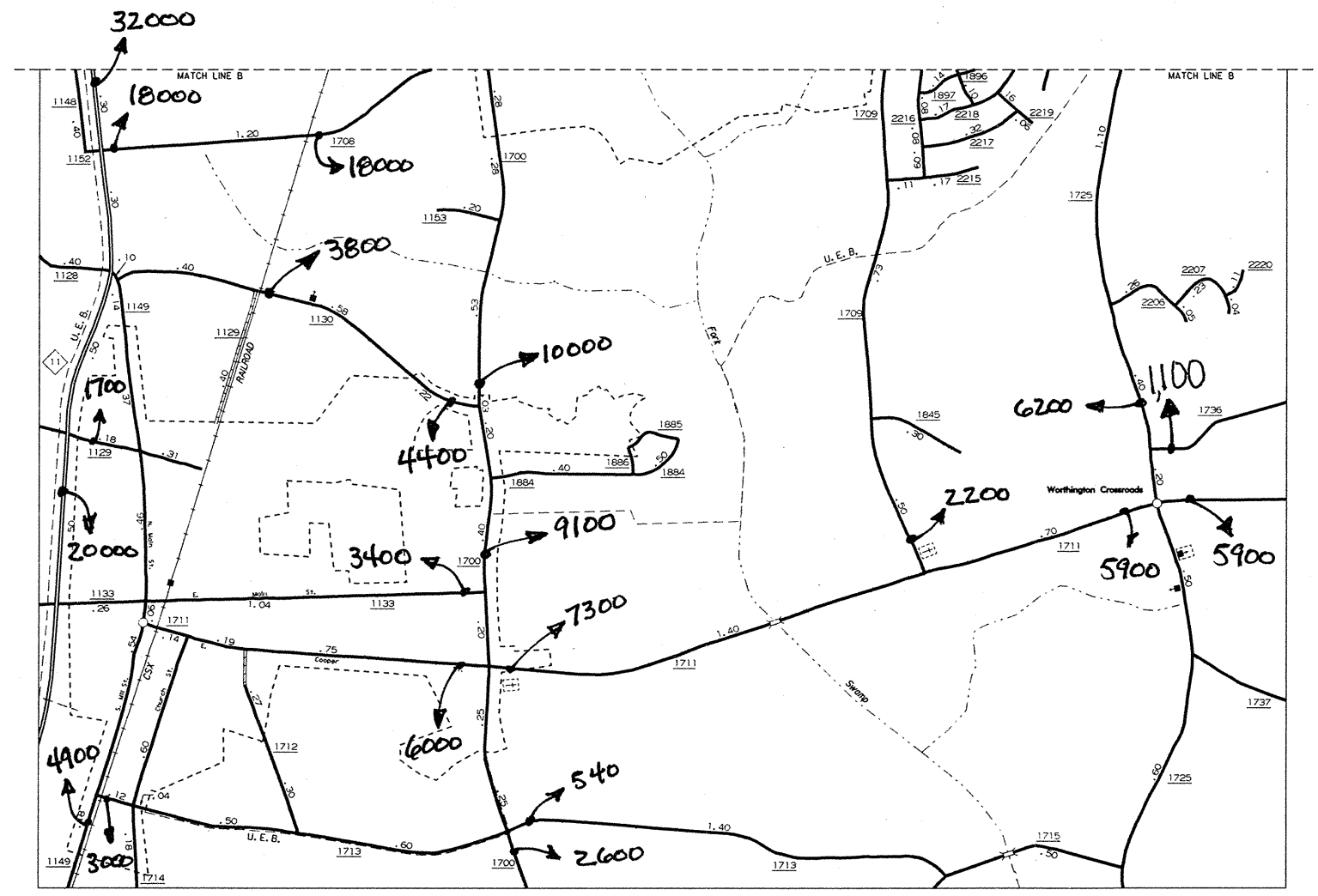


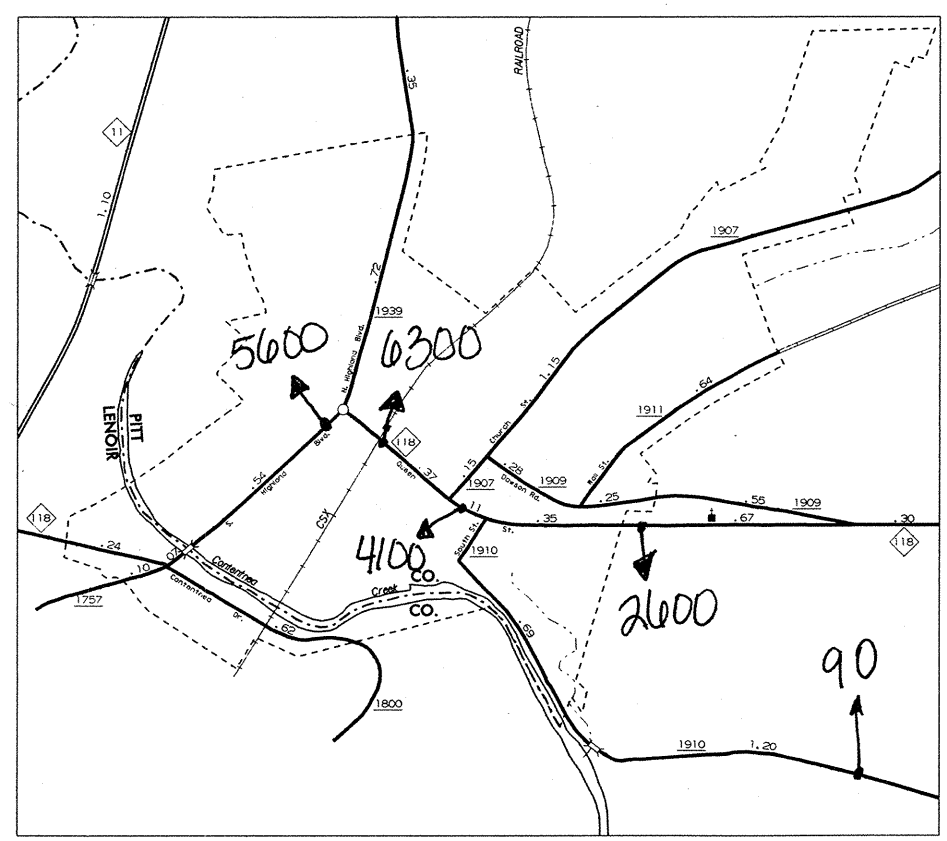
FARMVILLE  
POP. 4,535



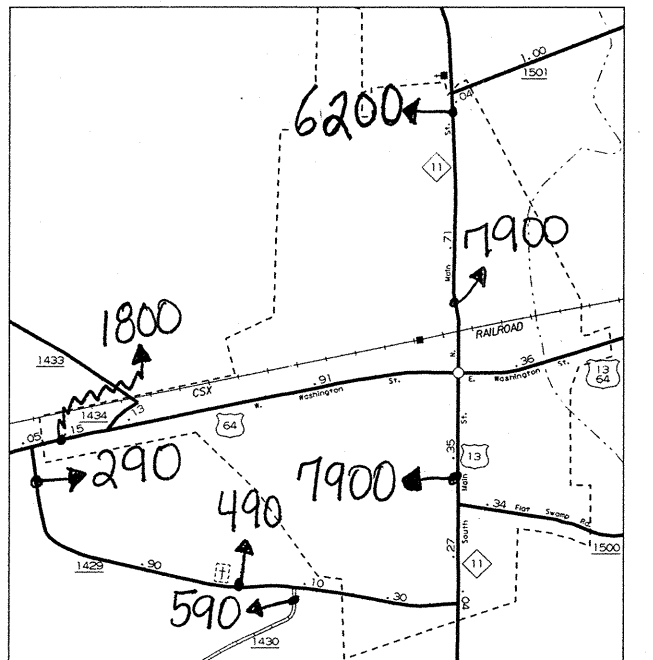
GRIMESLAND  
POP. 473



WINTERVILLE  
POP. 2,129



GRIFTON  
POP. 2,140



BETHEL  
POP. 1,854

2000  
ANNUAL AVERAGE  
DAILY TRAFFIC

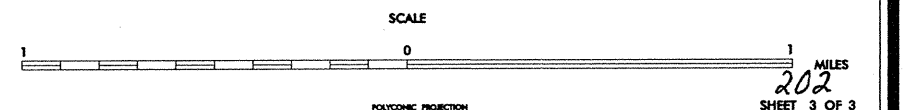
ENLARGED MUNICIPAL AND SUBURBAN AREAS

**PITT COUNTY**  
NORTH CAROLINA

PREPARED BY THE  
NORTH CAROLINA DEPARTMENT OF TRANSPORTATION  
DIVISION OF HIGHWAYS - GIS UNIT

IN COOPERATION WITH THE  
U.S. DEPARTMENT OF TRANSPORTATION  
FEDERAL HIGHWAY ADMINISTRATION

N.C. Department of Transportation  
Statewide Planning Branch  
Traffic Survey Unit  
1554 Mail Service Center  
Raleigh, NC 27639-1554



202  
SHEET 3 OF 3

COPIES OF THIS MAP ARE AVAILABLE TO THE PUBLIC AT A NOMINAL COST. ADDRESS: DIVISION OF HIGHWAYS, 1554 MAIL SERVICE CENTER, RALEIGH, NORTH CAROLINA, 27639-1554. REVISED 12-31-94 004  
 PITT 882 2