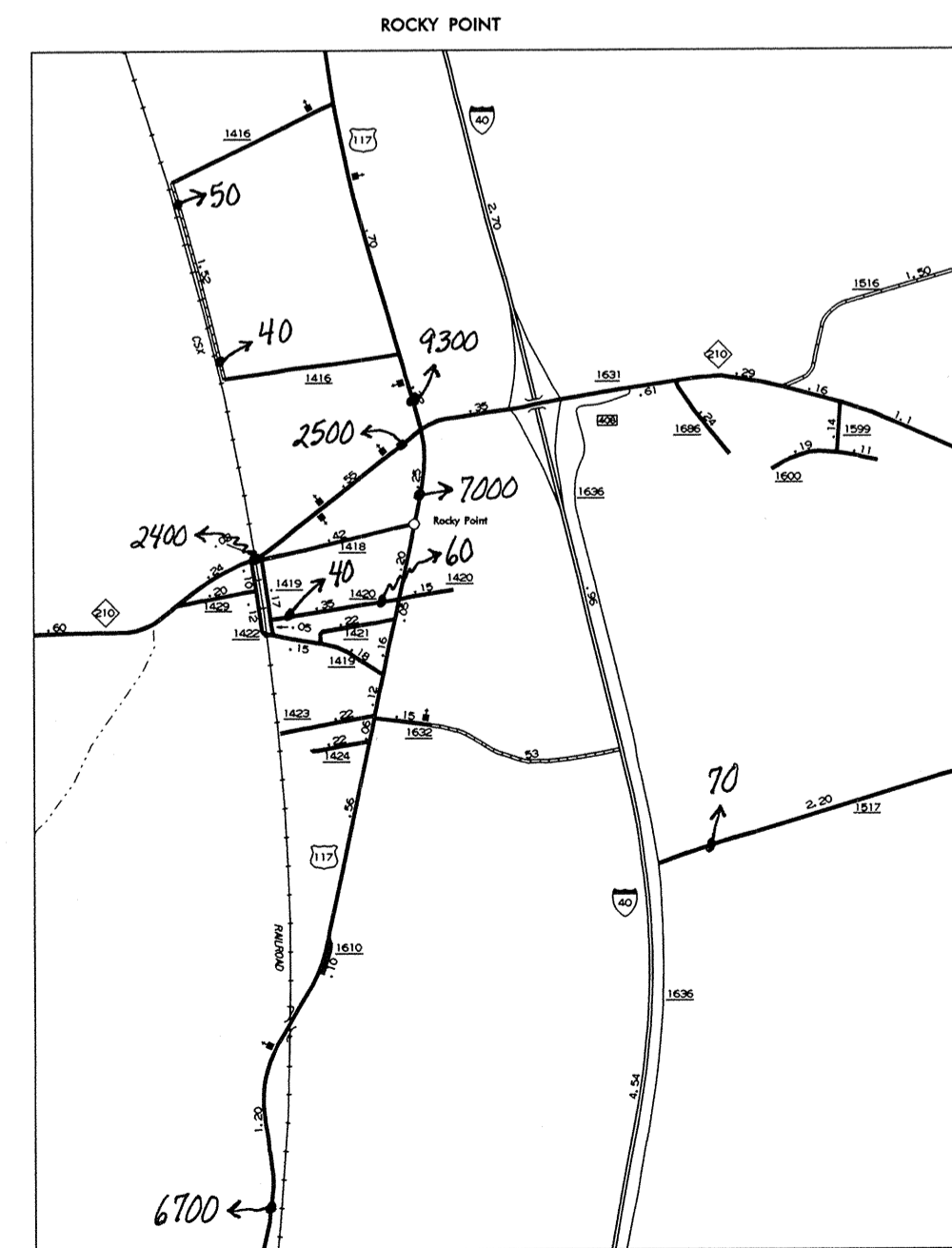
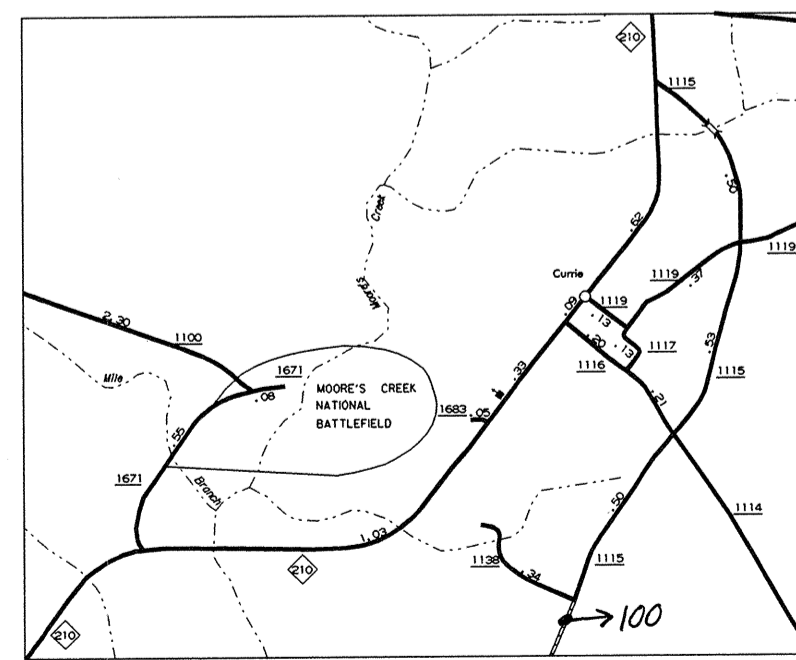


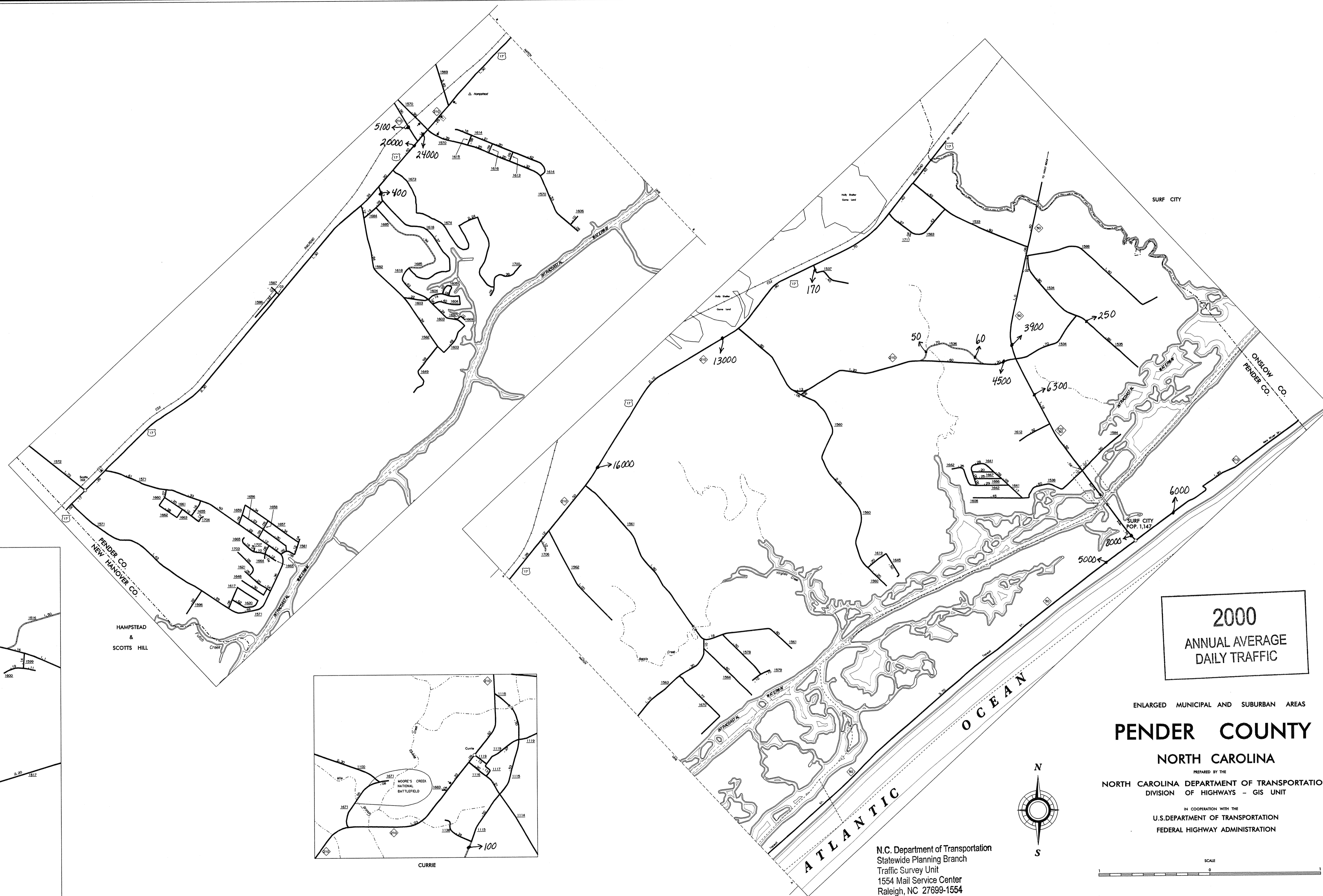
MARLBORO



ROCKY POINT

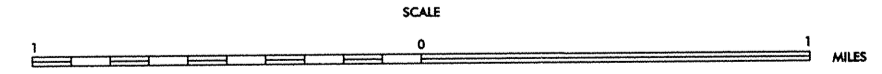
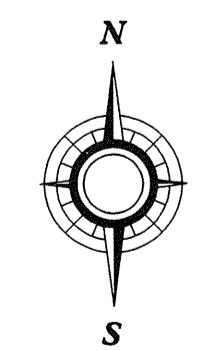


CURRIE



2000
ANNUAL AVERAGE
DAILY TRAFFIC

ENLARGED MUNICIPAL AND SUBURBAN AREAS
PENDER COUNTY
NORTH CAROLINA
PREPARED BY THE
NORTH CAROLINA DEPARTMENT OF TRANSPORTATION
DIVISION OF HIGHWAYS - GIS UNIT
IN COOPERATION WITH THE
U.S. DEPARTMENT OF TRANSPORTATION
FEDERAL HIGHWAY ADMINISTRATION



N.C. Department of Transportation
Statewide Planning Branch
Traffic Survey Unit
1554 Mail Service Center
Raleigh, NC 27699-1554

1:50,000 FOOT GRID BASED ON NORTH CAROLINA PLANE COORDINATE SYSTEM
NORTH CAROLINA

196
SHEET 2 OF 3

REVISIONS
DATE
BY
DESCRIPTION

COPIES OF THIS MAP ARE AVAILABLE
TO THE PUBLIC AT A NOMINAL COST.
ADDRESS: N.C. DEPARTMENT OF TRANSPORTATION
DIVISION OF HIGHWAYS
1554 MAIL SERVICE CENTER
RALEIGH, NORTH CAROLINA 27615