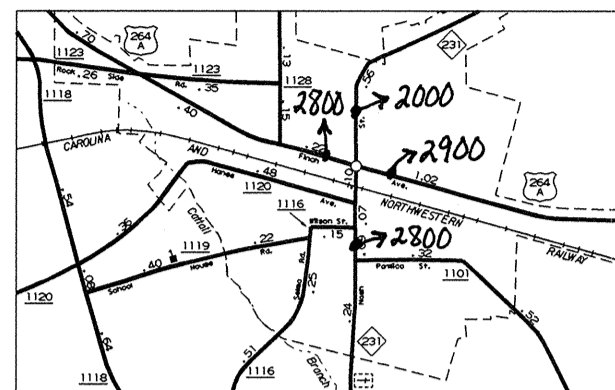
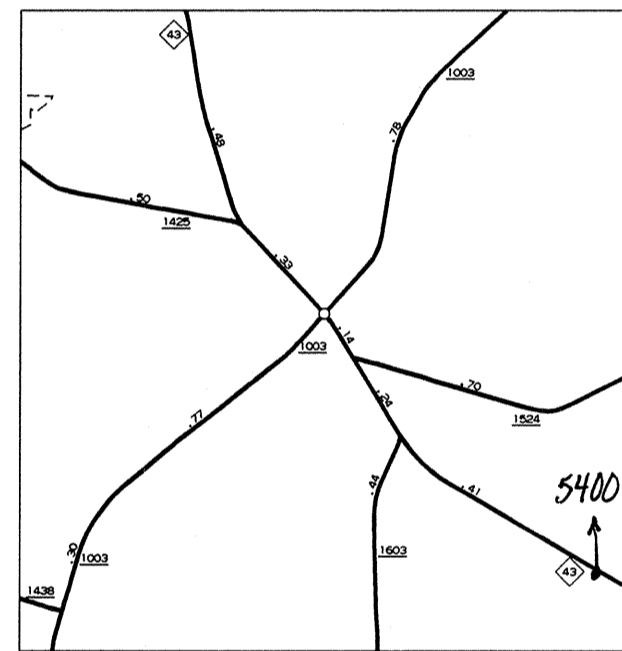


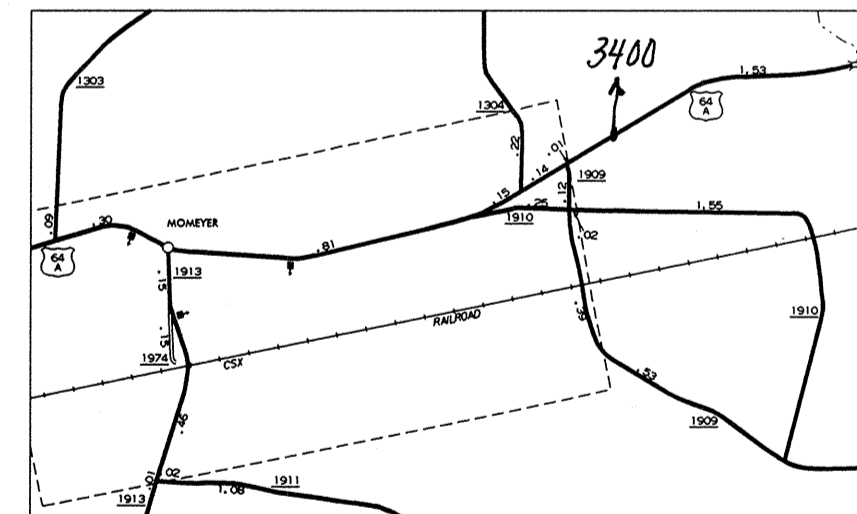
SPRING HOPE
POP. 1,216



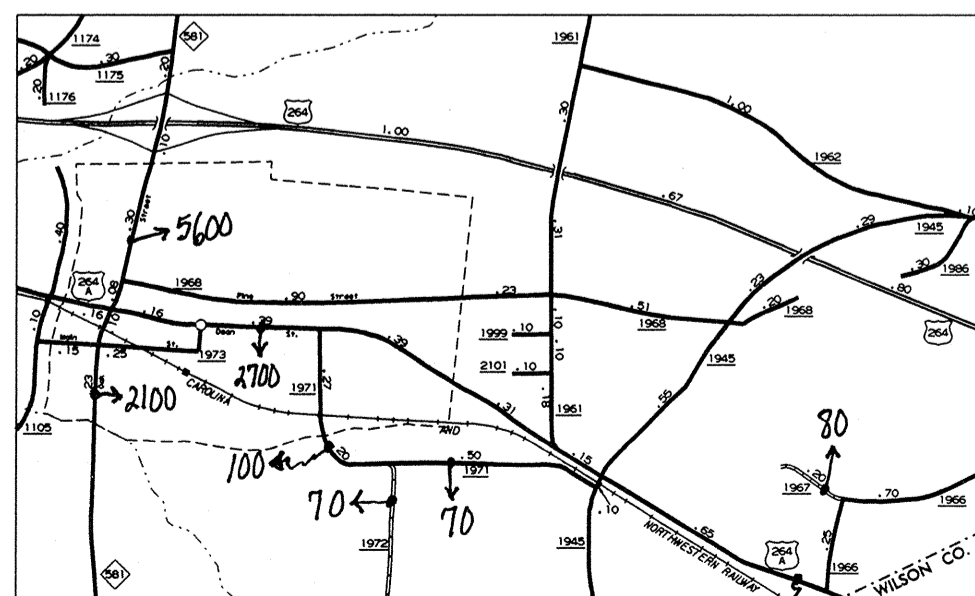
MIDDLESEX
POP. 728



RED OAK
POP. 285



HOMEYER

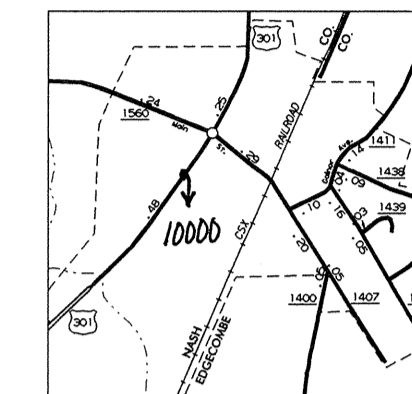


BAILEY
POP. 548

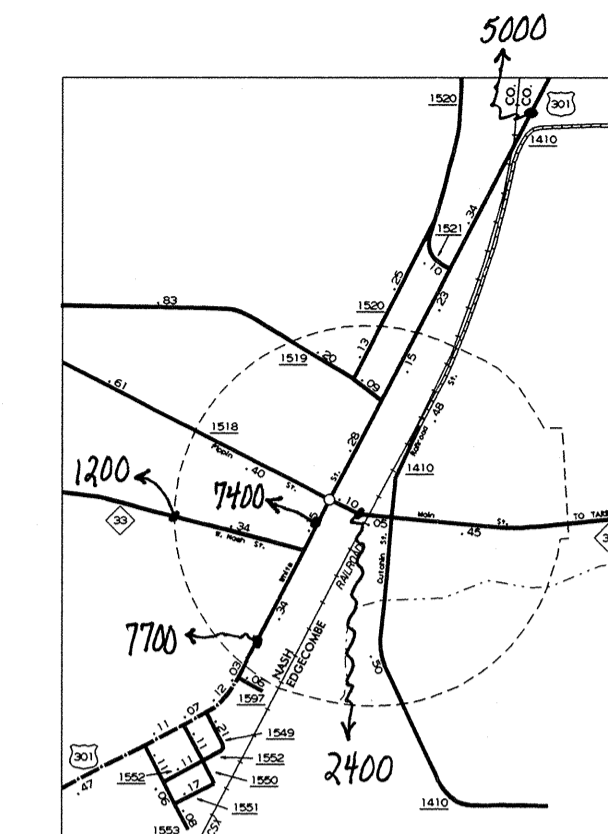


SEE URBAN
MAPPING ALSO

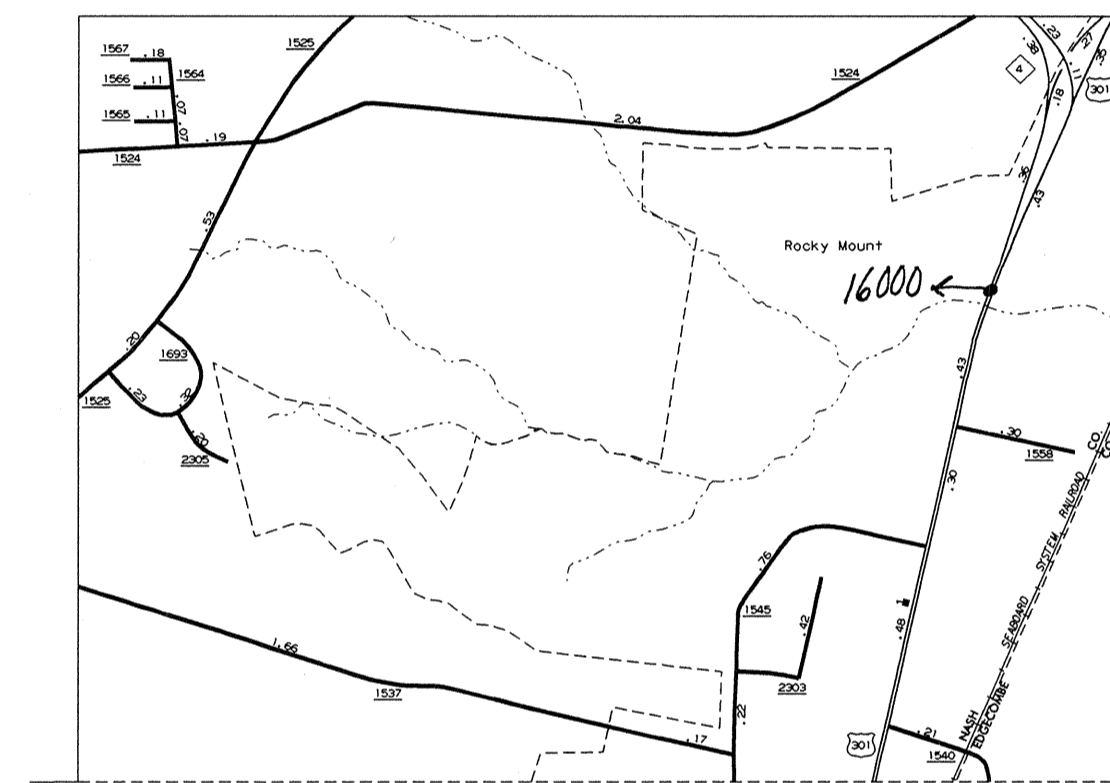
ROCKY MOUNT
POP. 30,383
[NASH 33,997
[ROCKMOUNT 17,971]



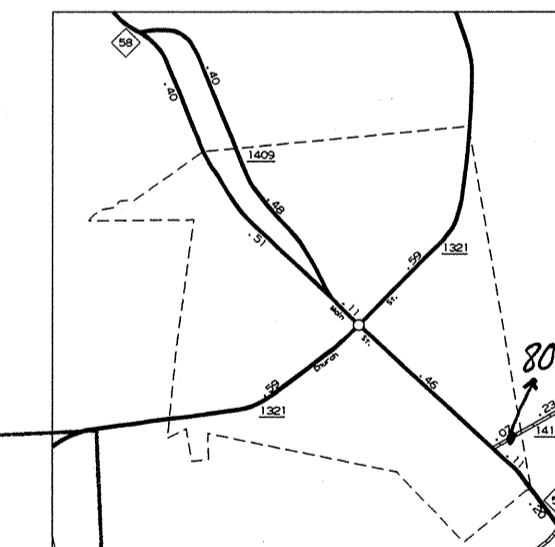
ROCKY MOUNT



WHITAKERS
POP. 862
[ROCKMOUNT 1,227
[NASH



Rocky Mount



CASTALIA
POP. 257

N.C. Department of Transportation
Statewide Planning Branch
Traffic Survey Unit
1554 Mail Service Center
Raleigh, NC 27699-1554

2000
ANNUAL AVERAGE
DAILY TRAFFIC

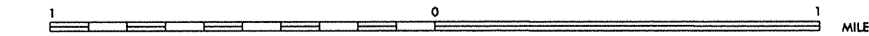
ENLARGED MUNICIPAL AND SUBURBAN AREAS

NASH COUNTY NORTH CAROLINA

PREPARED BY THE
NORTH CAROLINA DEPARTMENT OF TRANSPORTATION
DIVISION OF HIGHWAYS - GIS UNIT

IN COOPERATION WITH THE
U.S. DEPARTMENT OF TRANSPORTATION
FEDERAL HIGHWAY ADMINISTRATION

SCALE



REVISED	11-1-99	CDP
	10-1-97	ST
	8-1-94	ST