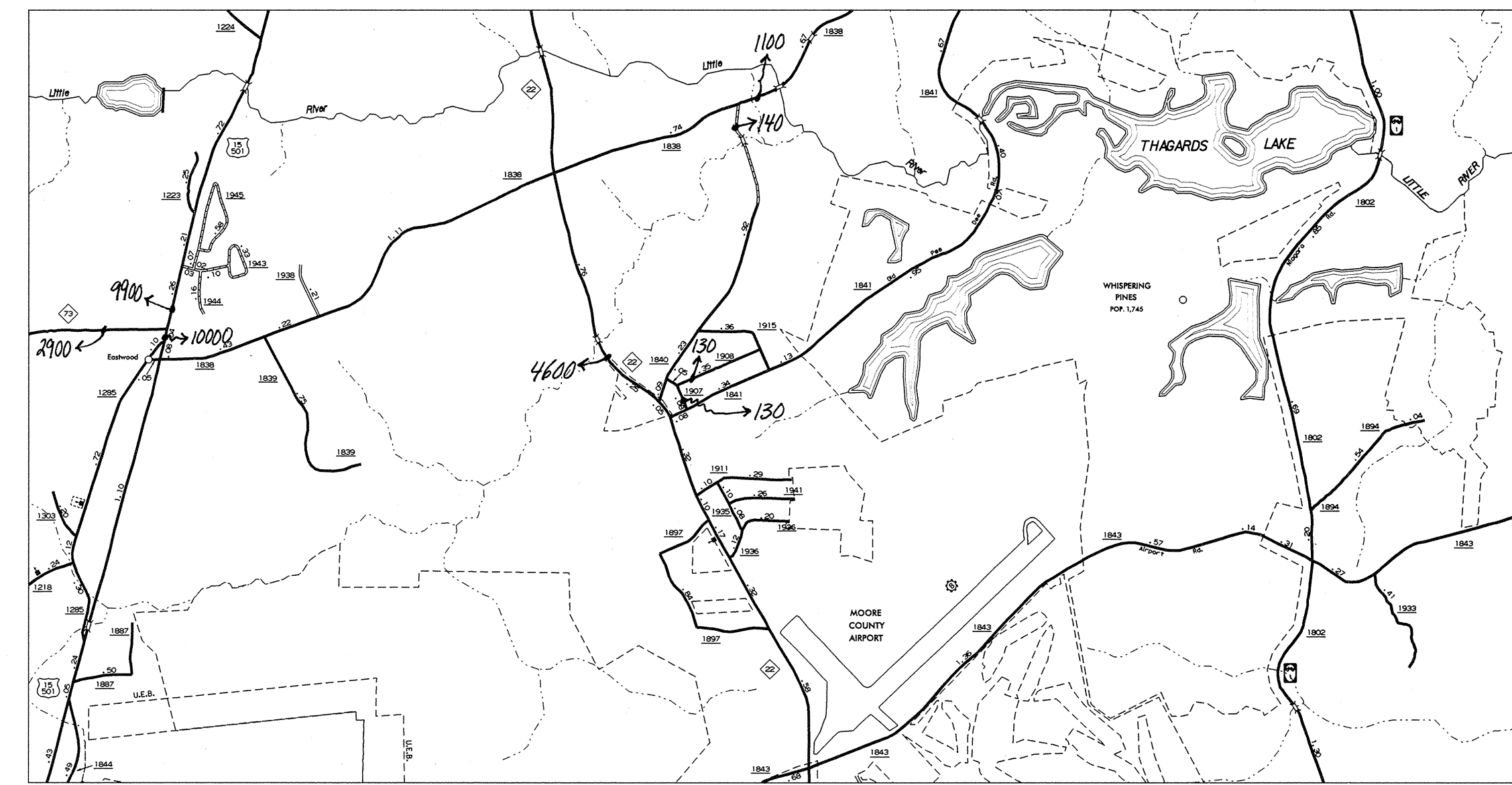
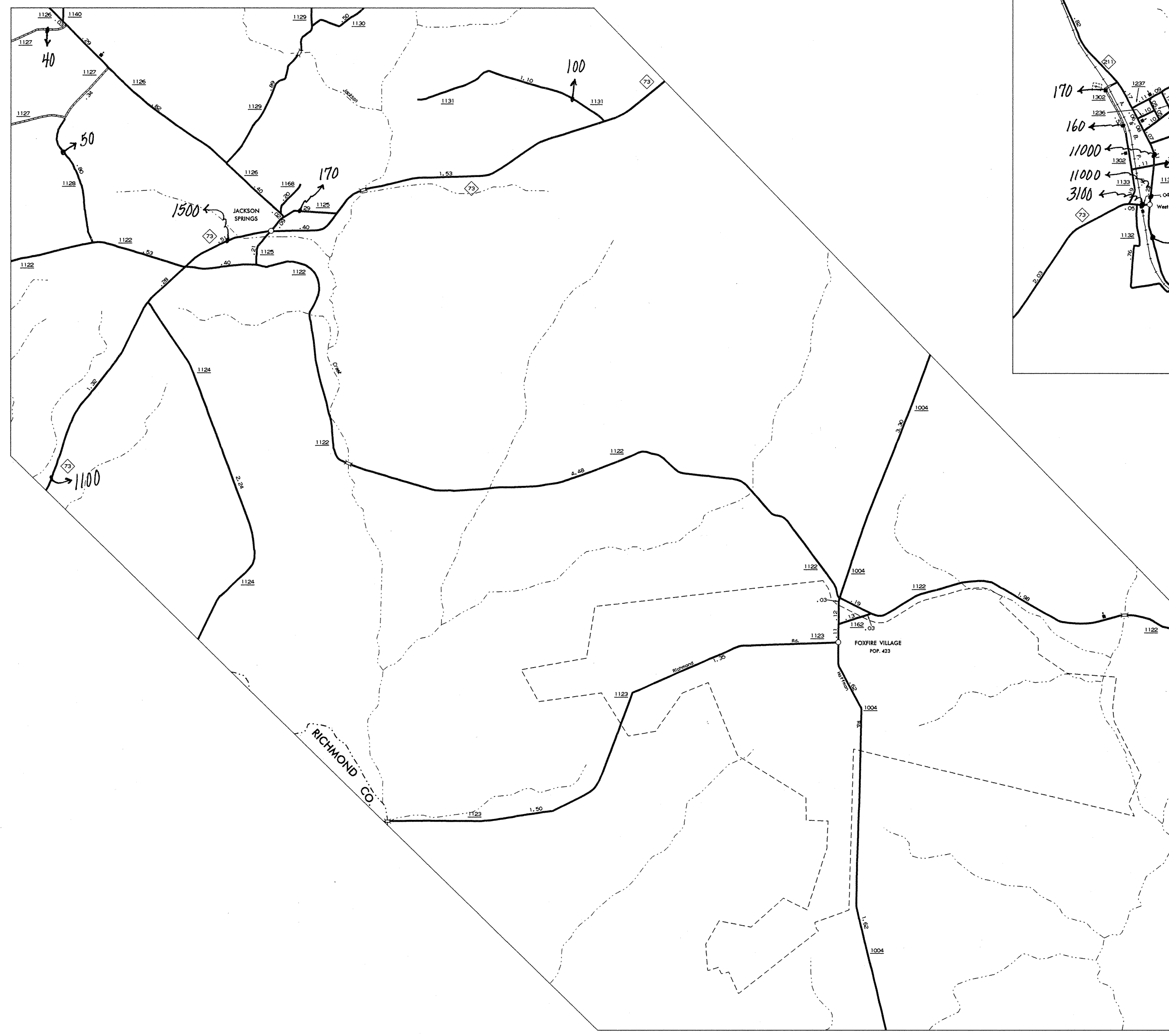


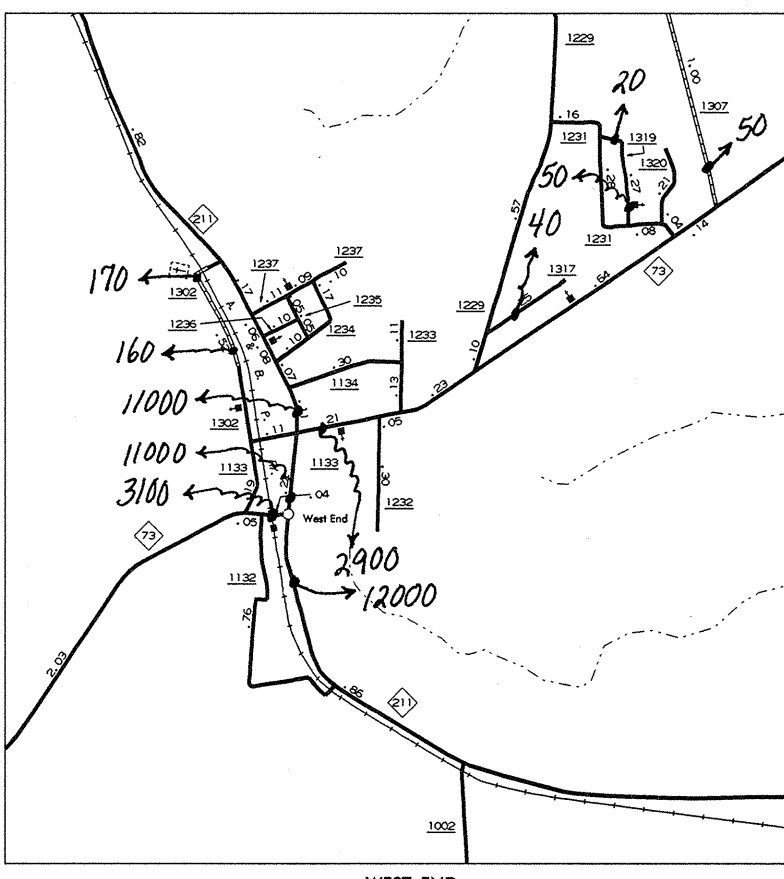
CAMERON AND VICINITY



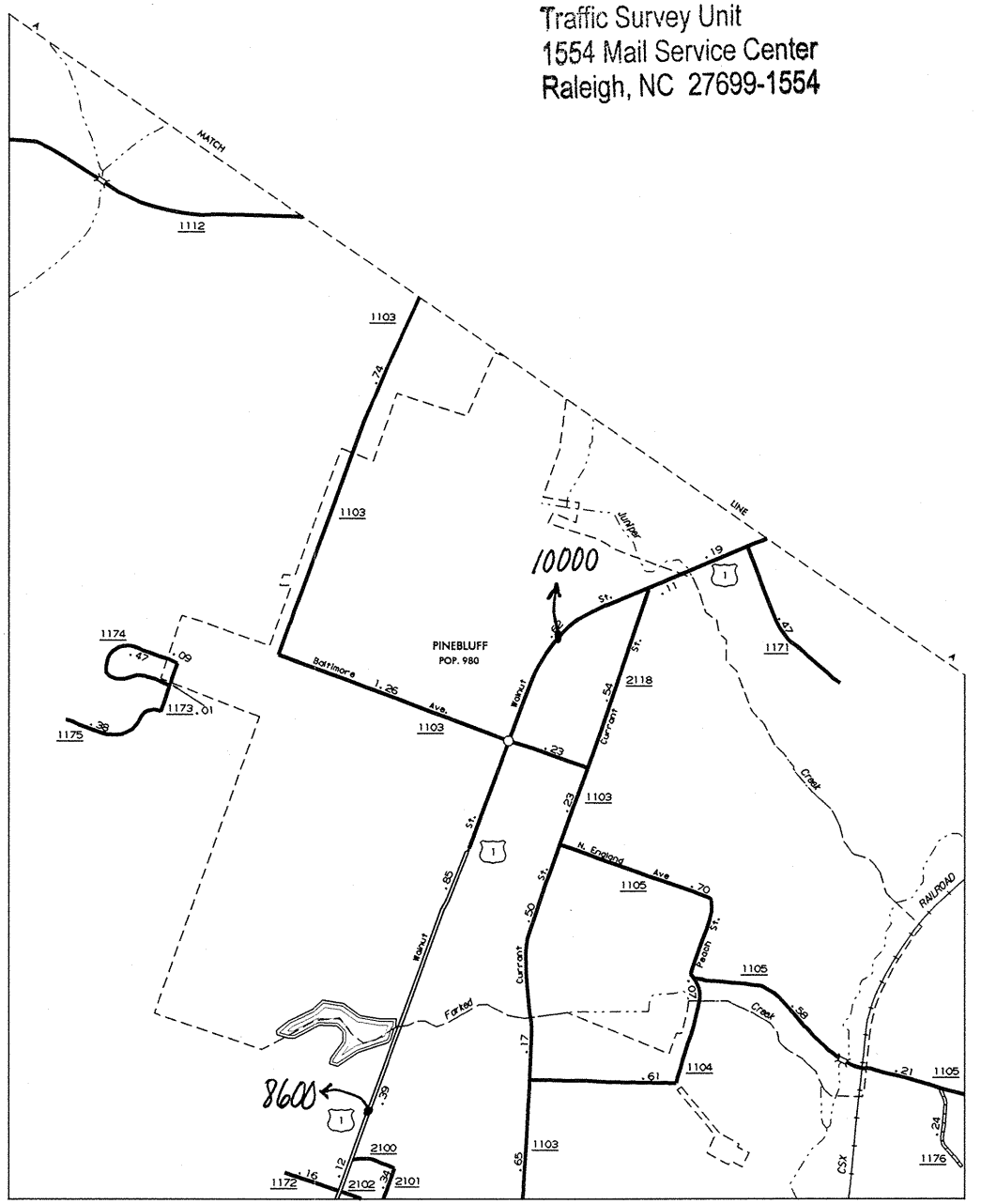
WHISPERING PINES



JACKSON SPRINGS AND FOXFIRE VILLAGE



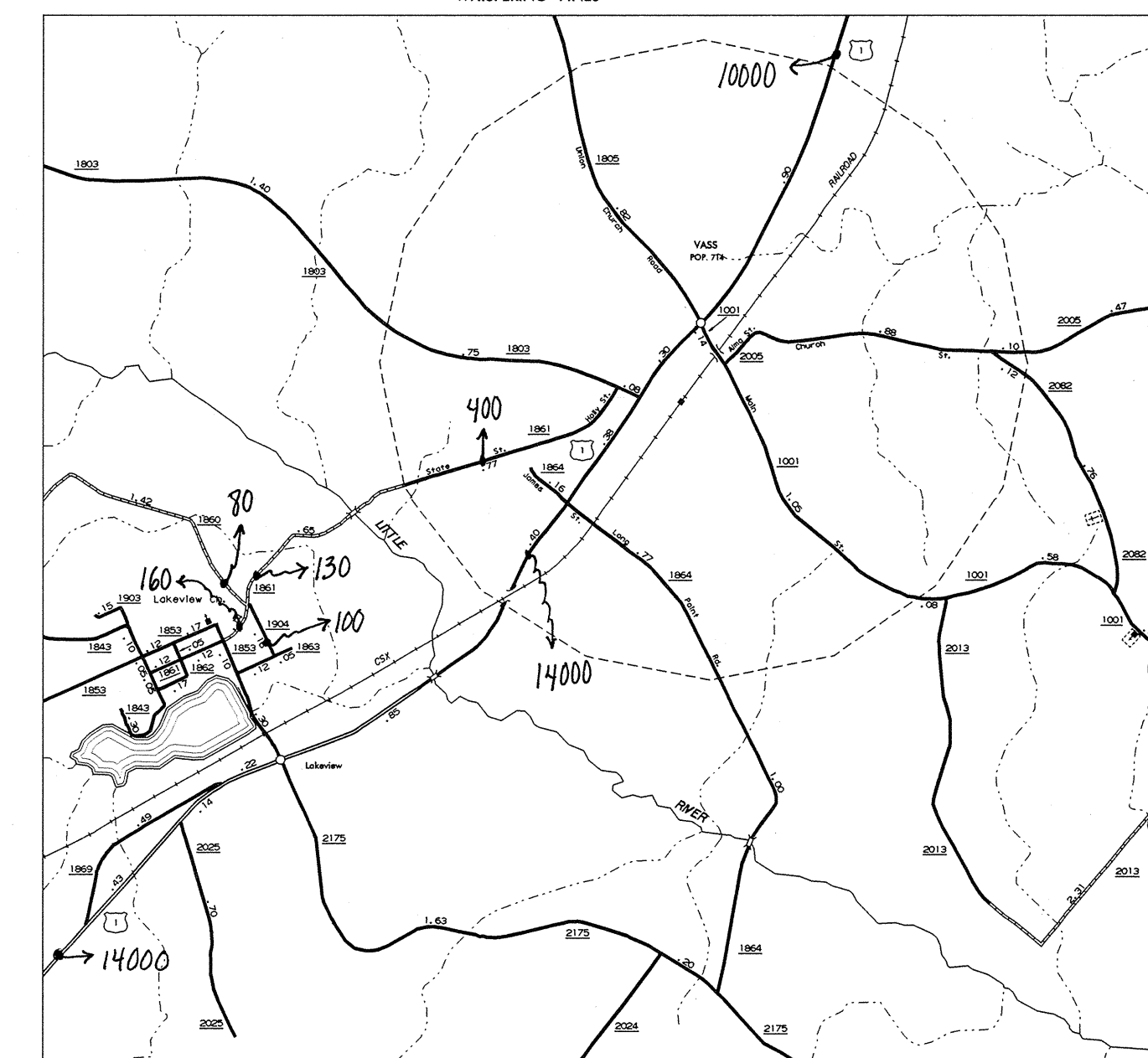
WEST END



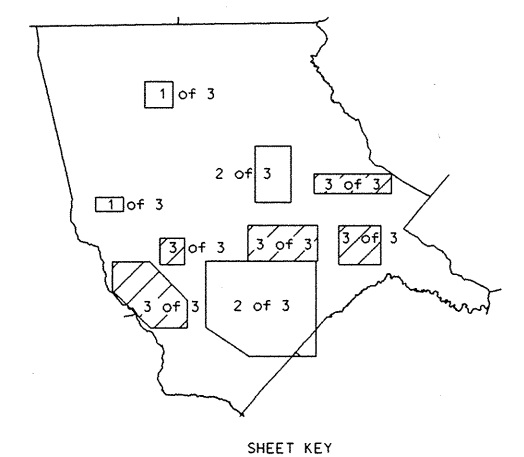
PINEBLUFF

2000
ANNUAL AVERAGE
DAILY TRAFFIC

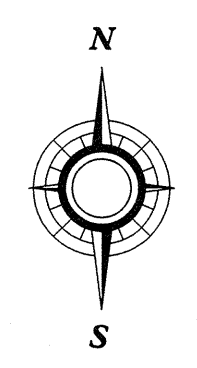
N.C. Department of Transportation
Statewide Planning Branch
Traffic Survey Unit
1554 Mail Service Center
Raleigh, NC 27699-1554



VASS - LAKEVIEW



SHEET KEY



ENLARGED MUNICIPAL AND SUBURBAN AREAS
MOORE COUNTY
NORTH CAROLINA
PREPARED BY THE
NORTH CAROLINA DEPARTMENT OF TRANSPORTATION
DIVISION OF HIGHWAYS - GIS UNIT
IN COOPERATION WITH THE
U.S. DEPARTMENT OF TRANSPORTATION
FEDERAL HIGHWAY ADMINISTRATION
SCALE
0 1 MILES

10,000 FOOT GRID BASED ON NORTH CAROLINA PLANE COORDINATE SYSTEM
MOORE COUNTY

178
SHEET 3 OF 3

REVISIONS
NO. DATE BY
1 1-99
2 1-99
3 6-99
4 11-99
5 3-31-99

MOORE COUNTY, N.C. DEPARTMENT OF TRANSPORTATION
DIVISION OF HIGHWAYS
1554 MAIL SERVICE CENTER
RALEIGH, NC 27699-1554