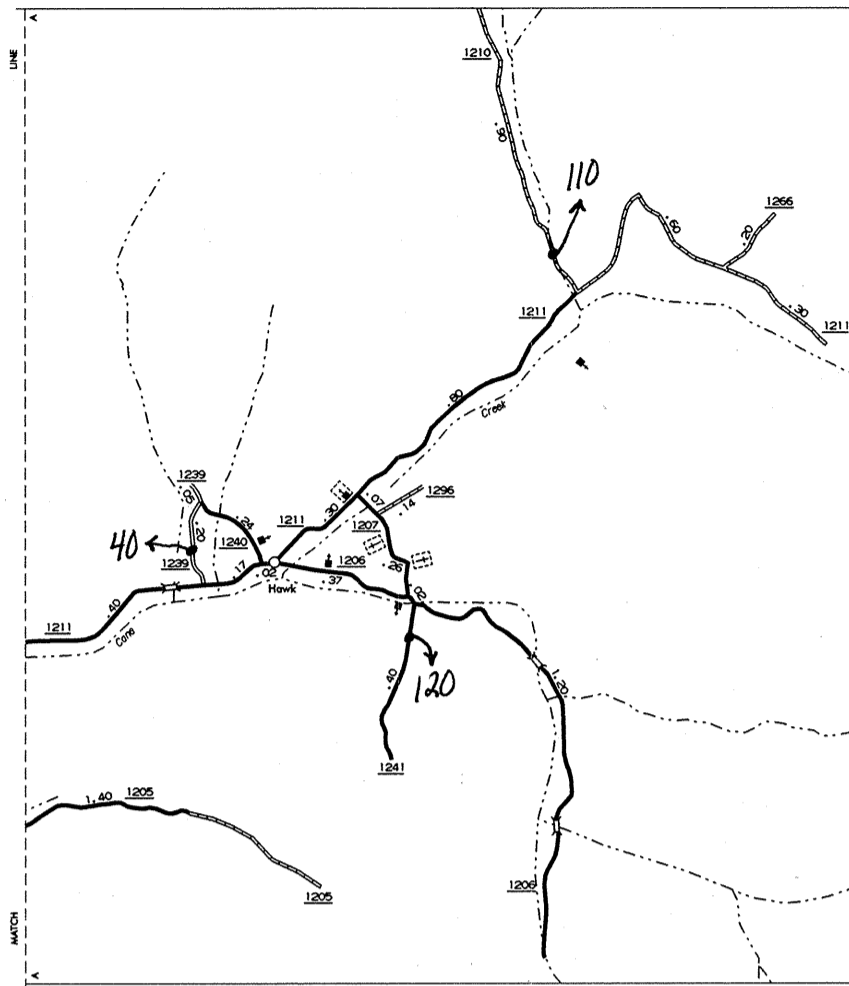
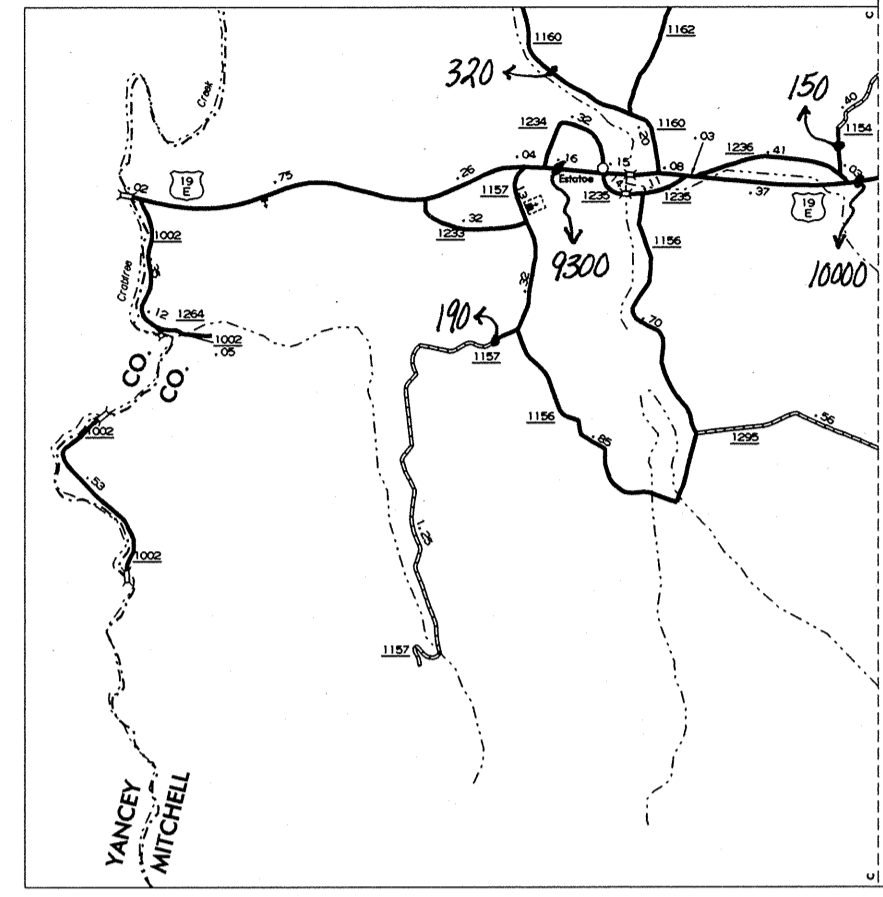


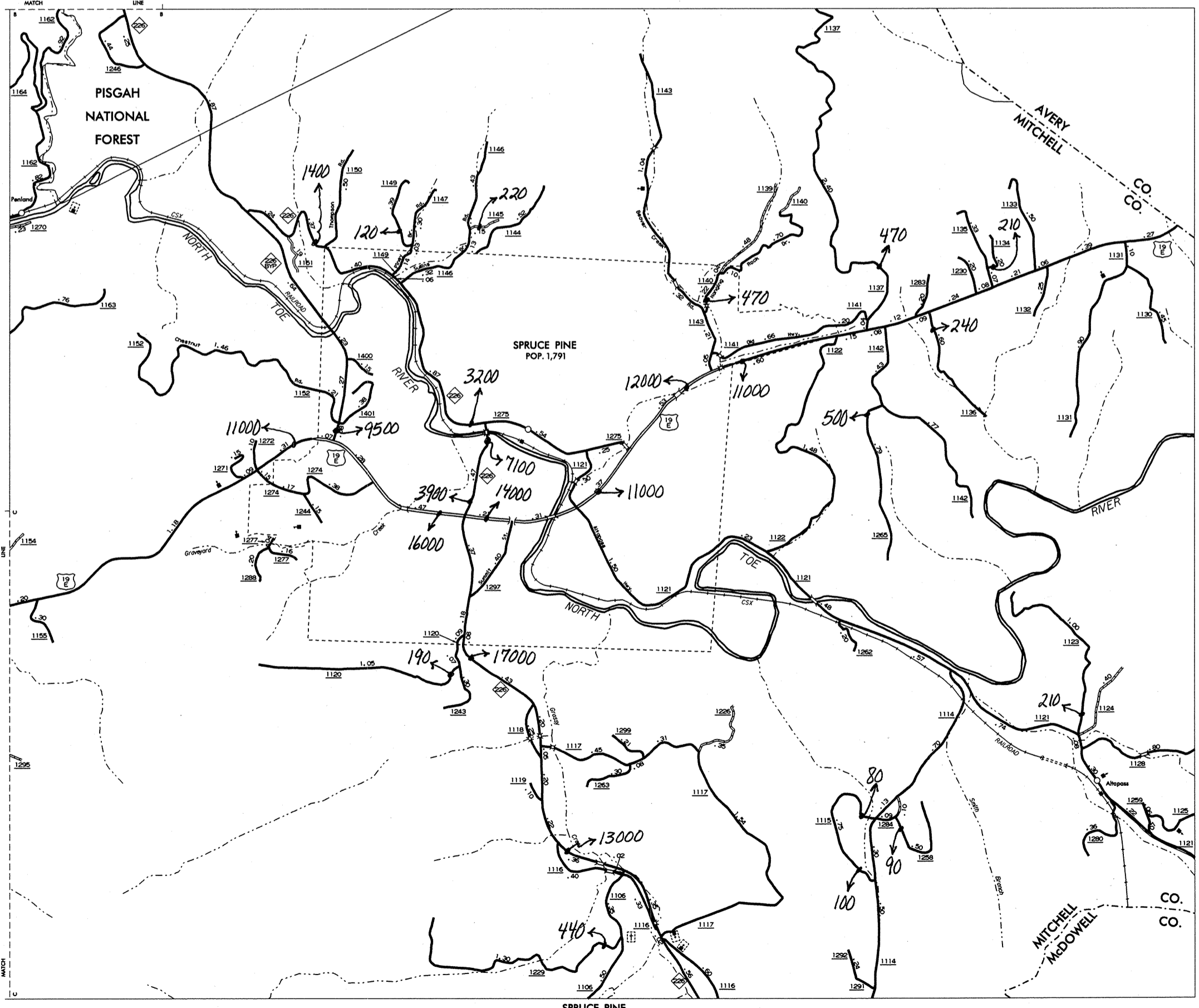
BAKERSVILLE AND VICINITY



HAWK



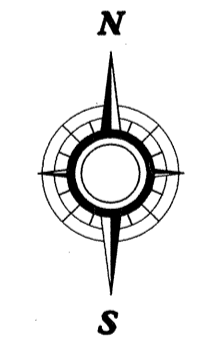
ESTATOE



SPRUCE PINE

2000
ANNUAL AVERAGE
DAILY TRAFFIC

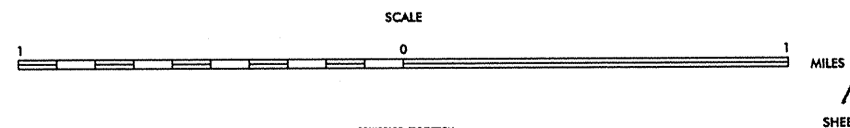
N.C. Department of Transportation
Statewide Planning Branch
Traffic Survey Unit
1554 Mail Service Center
Raleigh, NC 27699-1554



ENLARGED MUNICIPAL AND SUBURBAN AREAS
MITCHELL COUNTY
NORTH CAROLINA

PREPARED BY THE
NORTH CAROLINA DEPARTMENT OF TRANSPORTATION
DIVISION OF HIGHWAYS - GIS UNIT

IN COOPERATION WITH THE
U.S. DEPARTMENT OF TRANSPORTATION
FEDERAL HIGHWAY ADMINISTRATION



CORNER OF THIS MAP ARE AVAILABLE TO THE PUBLIC AT A NOMINAL COST. ADDRESS: N.C. DEPARTMENT OF TRANSPORTATION, STATEWIDE PLANNING BRANCH, 1554 MAIL SERVICE CENTER, RALEIGH, NC 27699-1554
 REVISIONS:
 11-14-85 JMS
 6-26-87 JMS
 12-22-87 JMS
 3-1-89 JMS
 11-1-99 JMS