

REVISED
11-1-99 DDM
10/11/99 DDM

COPIES OF THIS MAP ARE AVAILABLE
TO THE PUBLIC AT A NOMINAL COST.
MAPS, N.C. DEPARTMENT OF TRANSPORTATION
DIVISION OF HIGHWAYS
RALEIGH, NORTH CAROLINA 27611

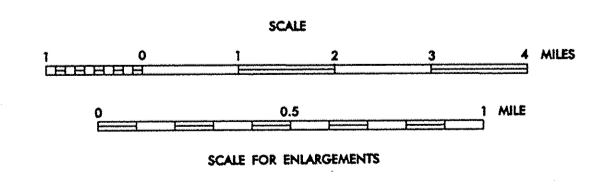
NOTE: MAP INCLUDES ONLY STATE MAINTAINED ROADS
OR IMPORTANT NON-SYSTEM ROADS.
MILEAGE NOT SHOWN ON FRONTAGE ROADS.
ROADS SHOWN AS OF OCT. 1, 1997.

KEY TO COUNTY ROAD NUMBERS
ALSO NUMBERS 1000 - 10000

15,000 FOOT GRID BASED ON NORTH CAROLINA PLANE COORDINATE SYSTEM
POLITICAL BOUNDARIES

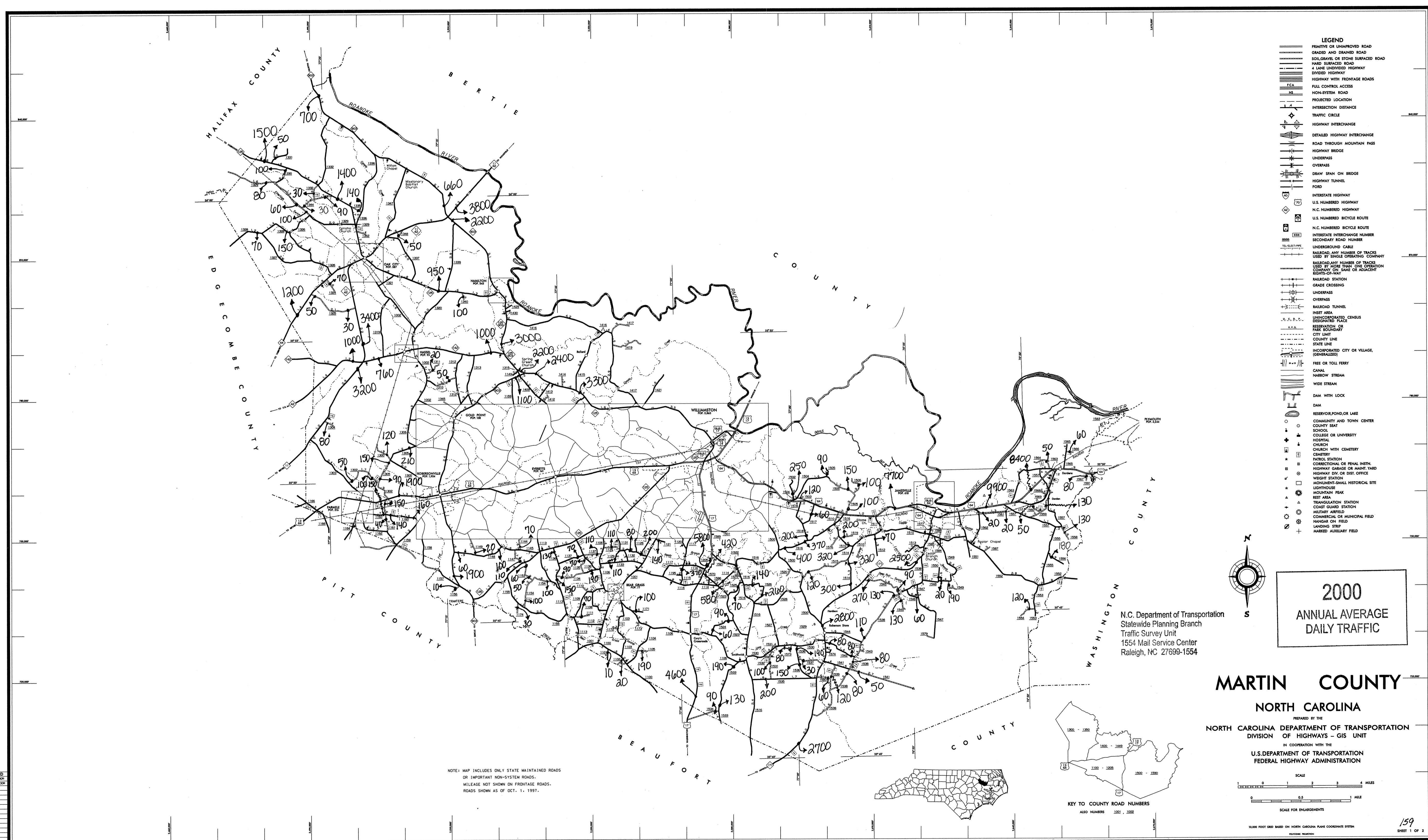
2000
ANNUAL AVERAGE
DAILY TRAFFIC

MARTIN COUNTY
NORTH CAROLINA
PREPARED BY THE
NORTH CAROLINA DEPARTMENT OF TRANSPORTATION
DIVISION OF HIGHWAYS - GIS UNIT
IN COOPERATION WITH THE
U.S. DEPARTMENT OF TRANSPORTATION
FEDERAL HIGHWAY ADMINISTRATION



SCALE FOR ENLARGEMENTS
15,000 FOOT GRID BASED ON NORTH CAROLINA PLANE COORDINATE SYSTEM
POLITICAL BOUNDARIES

159
SHEET 1 OF 2



- LEGEND**
- PRIMITIVE OR UNIMPROVED ROAD
 - GRADED AND DRAINED ROAD
 - SOIL GRAVEL OR STONE SURFACED ROAD
 - HAUD SURFACED ROAD
 - 4 LANE UNDIVIDED HIGHWAY
 - DIVIDED HIGHWAY
 - HIGHWAY WITH FRONTAGE ROADS
 - FCA
 - FULL CONTROL ACCESS
 - NON-SYSTEM ROAD
 - PROJECTED LOCATION
 - INTERSECTION DISTANCE
 - TRAFFIC CIRCLE
 - HIGHWAY INTERCHANGE
 - DETAILED HIGHWAY INTERCHANGE
 - ROAD THROUGH MOUNTAIN PASS
 - HIGHWAY BRIDGE
 - UNDERPASS
 - OVERPASS
 - DRAW SPAN ON BRIDGE
 - HIGHWAY TUNNEL
 - FORD
 - INTERSTATE HIGHWAY
 - U.S. NUMBERED HIGHWAY
 - N.C. NUMBERED HIGHWAY
 - U.S. NUMBERED BICYCLE ROUTE
 - N.C. NUMBERED BICYCLE ROUTE
 - INTERSTATE INTERCHANGE NUMBER
 - SECONDARY ROAD NUMBER
 - UNDERGROUND CABLE
 - RAILROAD ANY NUMBER OF TRACKS USED BY SINGLE OPERATING COMPANY
 - RAILROAD ANY NUMBER OF TRACKS USED BY MORE THAN ONE OPERATING COMPANY ON SAME OR ADJACENT RIGHTS-OF-WAY
 - RAILROAD STATION
 - GRADE CROSSING
 - UNDERPASS
 - OVERPASS
 - RAILROAD TUNNEL
 - INLET AREA
 - UNINCORPORATED CENSUS DESIGNATED PLACE
 - RESERVATION OR PARK BOUNDARY
 - CITY LIMIT
 - COUNTY LINE
 - STATE LINE
 - INCORPORATED CITY OR VILLAGE (GENERALIZED)
 - FREE OR TOLL FERRY
 - CANAL
 - NARROW STREAM
 - WIDE STREAM
 - DAM WITH LOCK
 - DAM
 - RESERVOIR/POND OR LAKE
 - COMMUNITY AND TOWN CENTER
 - COUNTY SEAT
 - SCHOOL
 - COLLEGE OR UNIVERSITY
 - HOSPITAL
 - CHURCH
 - CHURCH WITH CEMETERY
 - CEMETERY
 - PATROL STATION
 - CORRECTIONAL OR PENAL INSTITUTION
 - HIGHWAY GARAGE OR MAINT. YARD
 - HIGHWAY DIV. OR DIST. OFFICE
 - WEIGHT STATION
 - MONUMENT-SMALL HISTORICAL SITE
 - LIGHTHOUSE
 - MOUNTAIN PEAK
 - REST AREA
 - TRIANGULATION STATION
 - COAST GUARD STATION
 - MILITARY AIRFIELD
 - COMMERCIAL OR MUNICIPAL FIELD
 - HANGAR ON FIELD
 - LANDING STRIP
 - MARKED AUXILIARY FIELD