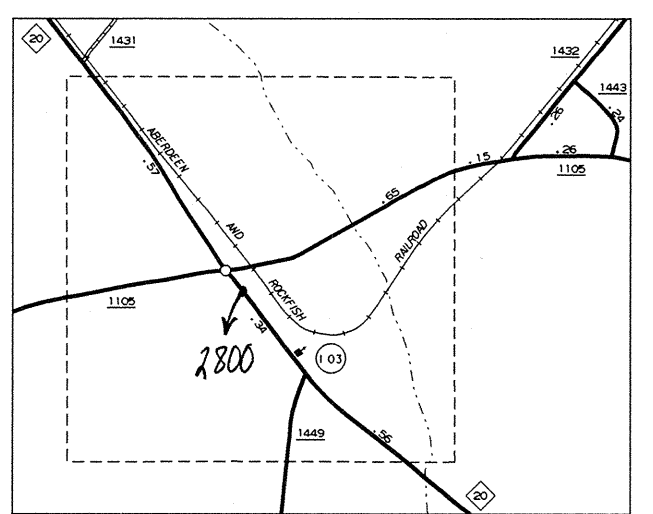
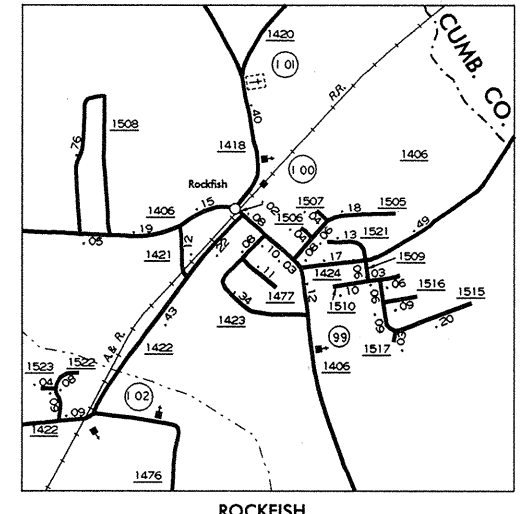


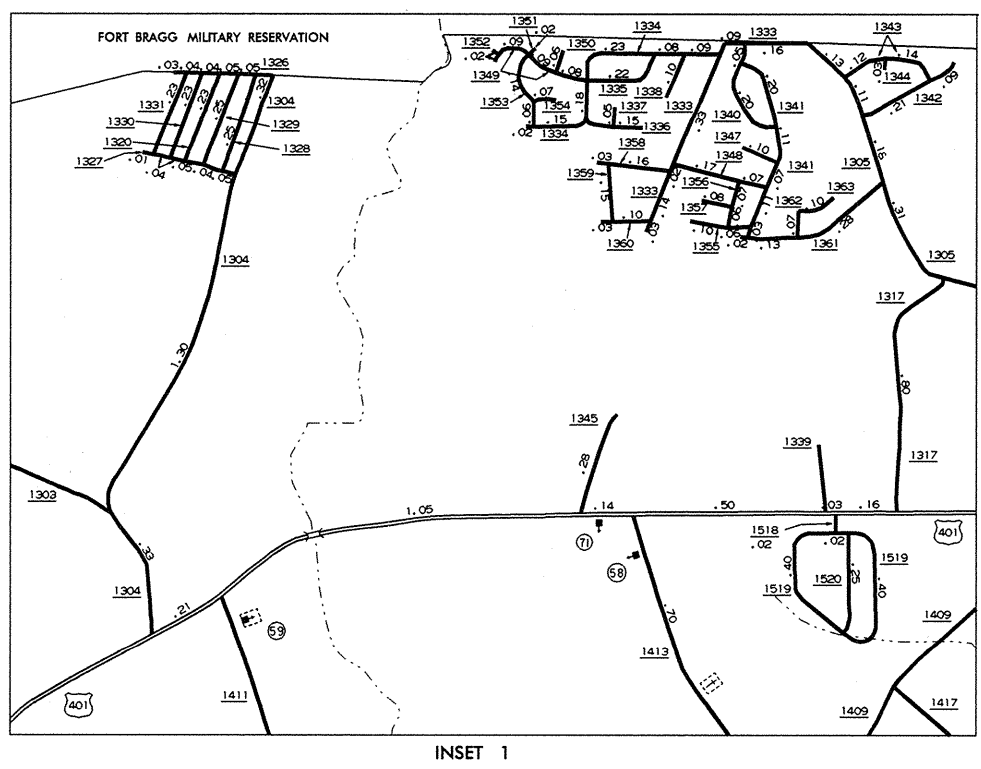
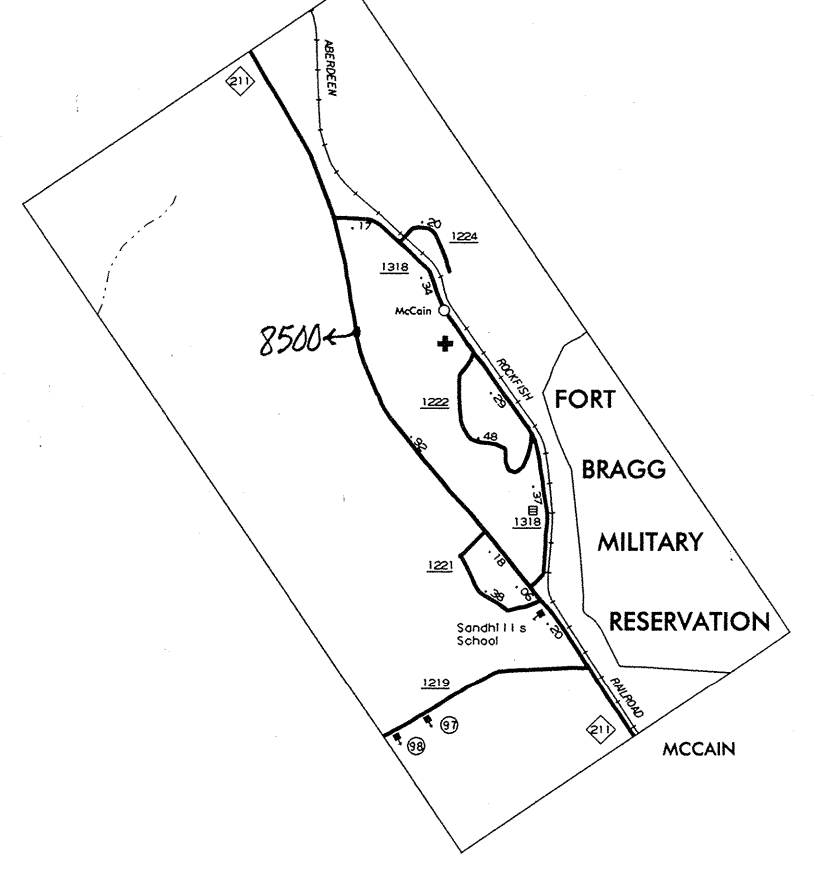
RAEFORD
POP. 4,100



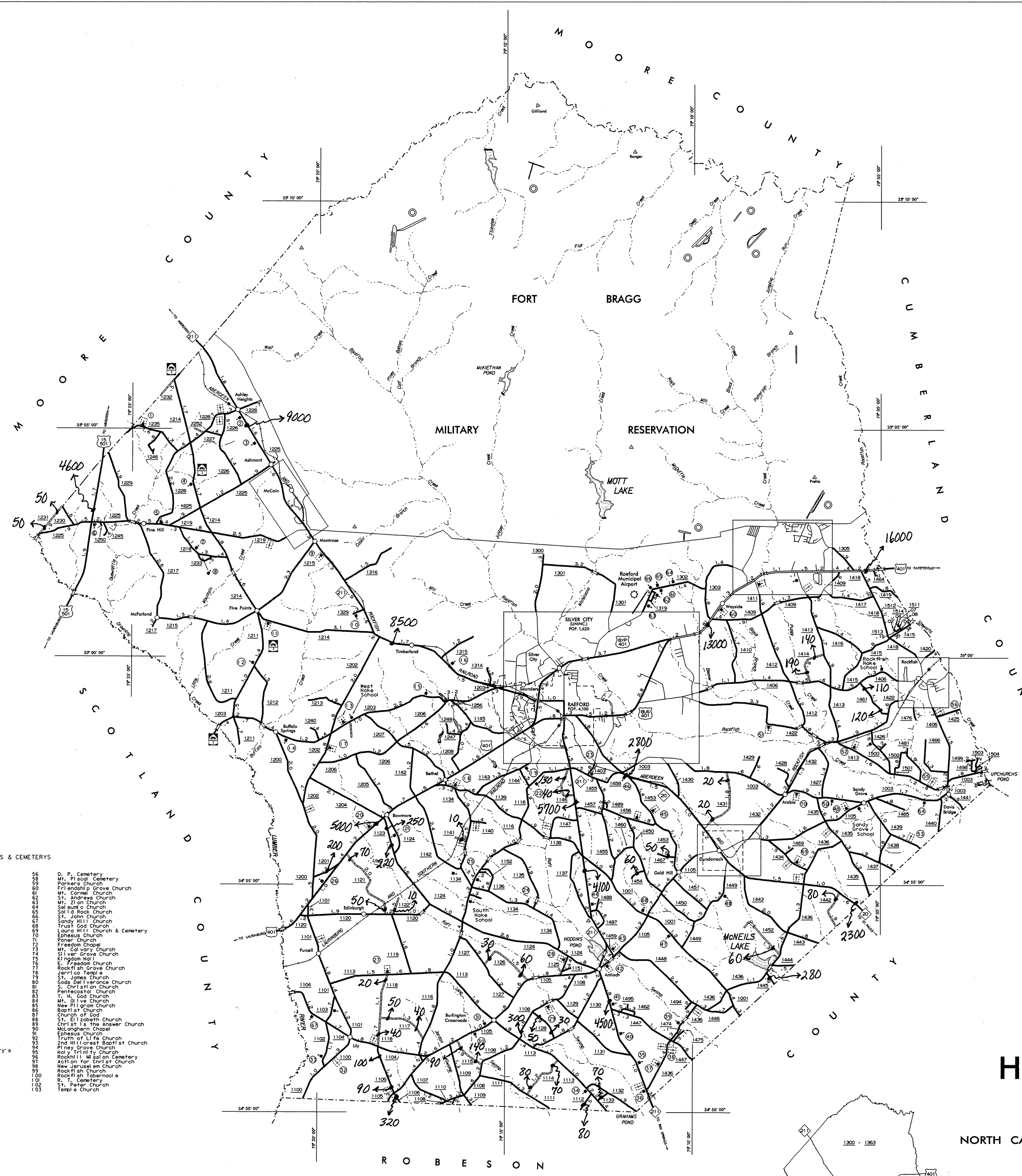
DUNDARRACH



ROCKFISH



INSET 1

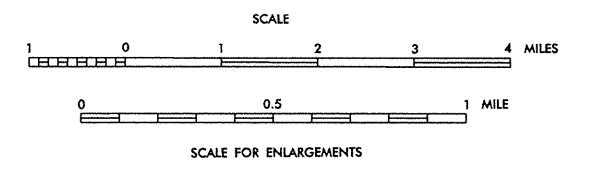


HOKE COUNTY

NORTH CAROLINA

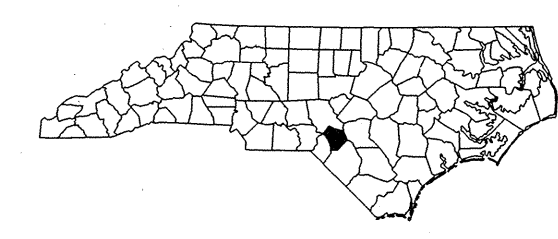
PREPARED BY THE
NORTH CAROLINA DEPARTMENT OF TRANSPORTATION
DIVISION OF HIGHWAYS - GIS UNIT

IN COOPERATION WITH THE
U.S. DEPARTMENT OF TRANSPORTATION
FEDERAL HIGHWAY ADMINISTRATION



13,000 FOOT GRID BASED ON HOKE COUNTY PLANE COORDINATE SYSTEM

- KEY TO CHURCHES & CEMETERIES
- Liberty Church
 - St. Paul's Church
 - St. Peter's Church
 - St. James Church
 - St. John's Church
 - St. Mary's Church
 - St. Michael's Church
 - St. Raphael's Church
 - St. Rose Church
 - St. Vincent Church
 - St. Ann Church
 - St. Elizabeth Church
 - St. Francis Church
 - St. George Church
 - St. Ignace Church
 - St. Joseph Church
 - St. Lawrence Church
 - St. Luke Church
 - St. Mark Church
 - St. Matthew Church
 - St. Paul Church
 - St. Peter Church
 - St. Thomas Church
 - St. Timothy Church
 - St. Ursula Church
 - St. Veronica Church
 - St. Agatha Church
 - St. Agnes Church
 - St. Agostino Church
 - St. Ann Church
 - St. Anthony Church
 - St. Augustine Church
 - St. Barbara Church
 - St. Basil Church
 - St. Blaise Church
 - St. Bridget Church
 - St. Catherine Church
 - St. Cecilia Church
 - St. Denis Church
 - St. Elizabeth Church
 - St. Eustachius Church
 - St. Eusebius Church
 - St. Felix Church
 - St. Flavian Church
 - St. Gall Church
 - St. Gerasimus Church
 - St. Giles Church
 - St. Ignace Church
 - St. James Church
 - St. John Church
 - St. John Baptist Church
 - St. Joseph Church
 - St. Lawrence Church
 - St. Luke Church
 - St. Mark Church
 - St. Matthew Church
 - St. Michael Church
 - St. Nicholas Church
 - St. Patrick Church
 - St. Peter Church
 - St. Peter's Church
 - St. Raphael Church
 - St. Rose Church
 - St. Sebastian Church
 - St. Stephen Church
 - St. Thaddeus Church
 - St. Valentine Church
 - St. Vincent Church
 - St. Vitalis Church
 - St. Zenobius Church
 - St. Andrew Church
 - St. Basil Church
 - St. Blaise Church
 - St. Brigid Church
 - St. Catherine Church
 - St. Clare Church
 - St. Elizabeth Church
 - St. Emmerich Church
 - St. Erasmus Church
 - St. Eustachius Church
 - St. Eusebius Church
 - St. Felix Church
 - St. Flavian Church
 - St. Gall Church
 - St. Gerasimus Church
 - St. Giles Church
 - St. Ignace Church
 - St. James Church
 - St. John Church
 - St. John Baptist Church
 - St. Joseph Church
 - St. Lawrence Church
 - St. Luke Church
 - St. Mark Church
 - St. Matthew Church
 - St. Michael Church
 - St. Nicholas Church
 - St. Patrick Church
 - St. Peter Church
 - St. Peter's Church
 - St. Raphael Church
 - St. Rose Church
 - St. Sebastian Church
 - St. Stephen Church
 - St. Thaddeus Church
 - St. Valentine Church
 - St. Vincent Church
 - St. Vitalis Church
 - St. Zenobius Church



N.C. Department of Transportation
Statewide Planning Branch
Traffic Survey Unit
1554 Mail Service Center
Raleigh, NC 27699-1554

2000
ANNUAL AVERAGE
DAILY TRAFFIC

NOTE: MAP INCLUDES ONLY STATE MAINTAINED ROADS
OR IMPORTANT NON-SYSTEM ROADS.
ROADS SHOWN AS OF MAR 31, 1999.

KEY TO COUNTY ROAD NUMBERS
ALSO NUMBERS 1001, 1002

REVISED
JUL 11-94
2001
11-98
8-99
LM 1-99
LM 3/1999