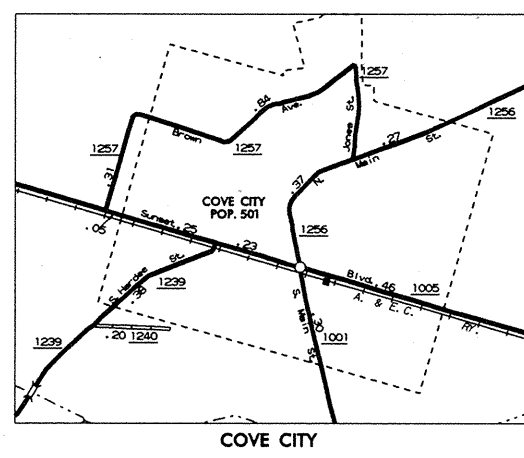
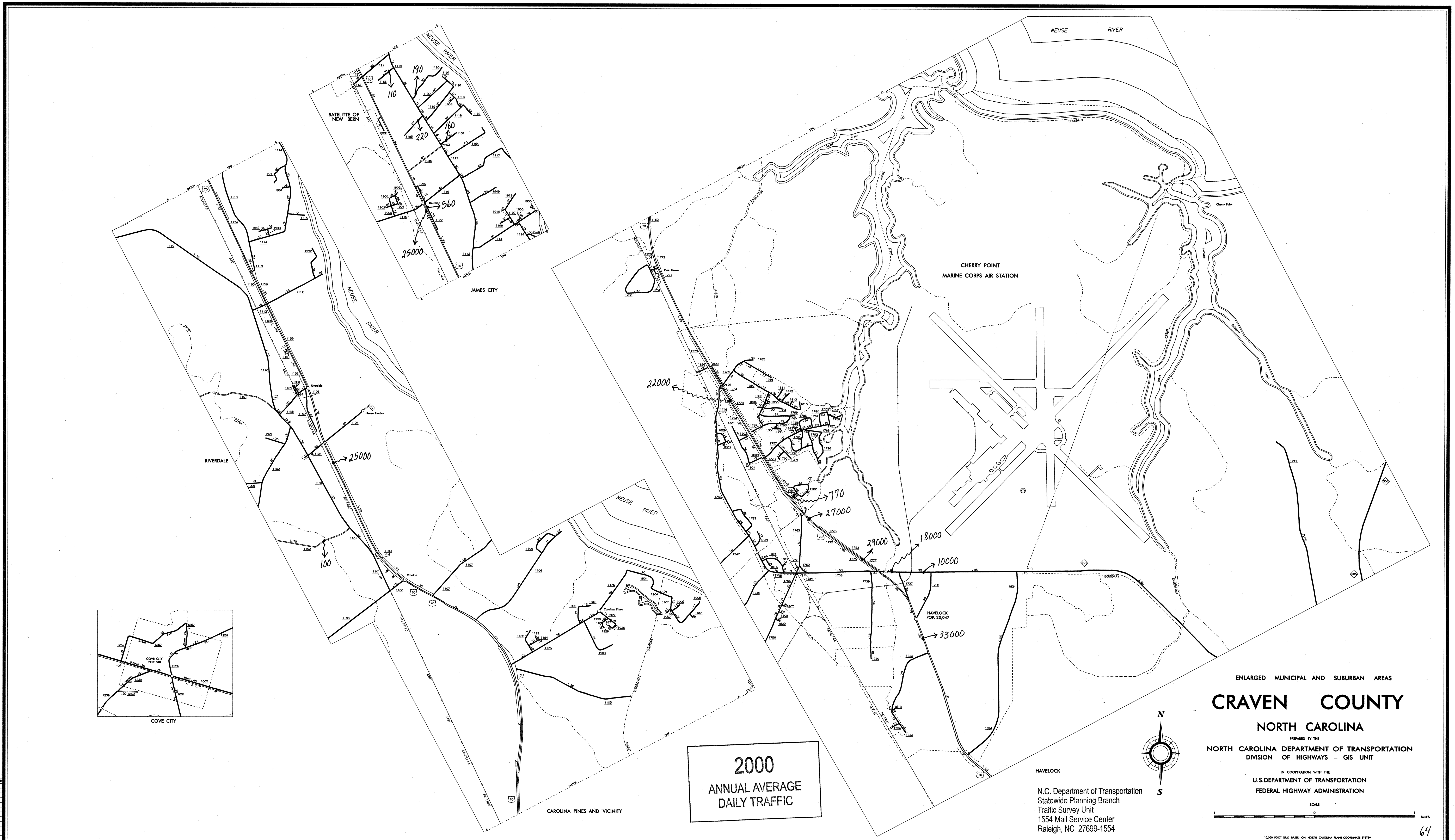
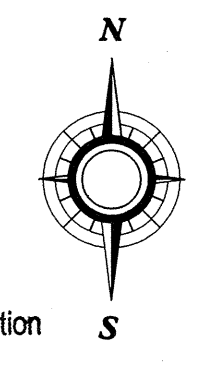


COPIES OF THIS MAP ARE AVAILABLE TO THE PUBLIC AT A NOMINAL COST. ADDRESS: DIVISION OF HIGHWAYS, N.C. DEPARTMENT OF TRANSPORTATION, RALEIGH, NORTH CAROLINA 27611

REVISED 12-31-94 602 11-27-94



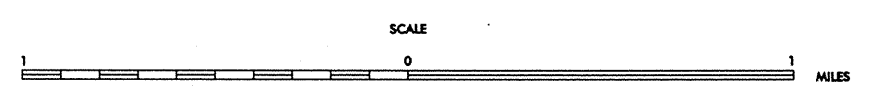
2000 ANNUAL AVERAGE DAILY TRAFFIC



ENLARGED MUNICIPAL AND SUBURBAN AREAS  
**CRAVEN COUNTY**  
NORTH CAROLINA

PREPARED BY THE  
NORTH CAROLINA DEPARTMENT OF TRANSPORTATION  
DIVISION OF HIGHWAYS - GIS UNIT

IN COOPERATION WITH THE  
U.S. DEPARTMENT OF TRANSPORTATION  
FEDERAL HIGHWAY ADMINISTRATION



HAVELOCK  
N.C. Department of Transportation  
Statewide Planning Branch  
Traffic Survey Unit  
1554 Mail Service Center  
Raleigh, NC 27699-1554