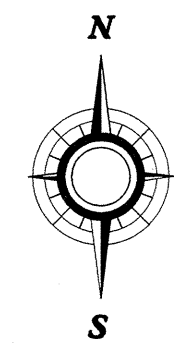


COPIES OF THIS MAP ARE AVAILABLE TO THE PUBLIC AT A NOMINAL COST. MAPS, N.C. DEPARTMENT OF TRANSPORTATION, DIVISION OF HIGHWAYS, 1554 MAIL SERVICE CENTER, RALEIGH, NC 27699-1554.

REVISED

N.C. Department of Transportation  
 Statewide Planning Branch  
 Traffic Survey Unit  
 1554 Mail Service Center  
 Raleigh, NC 27699-1554

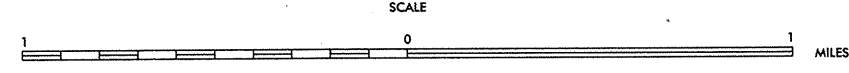
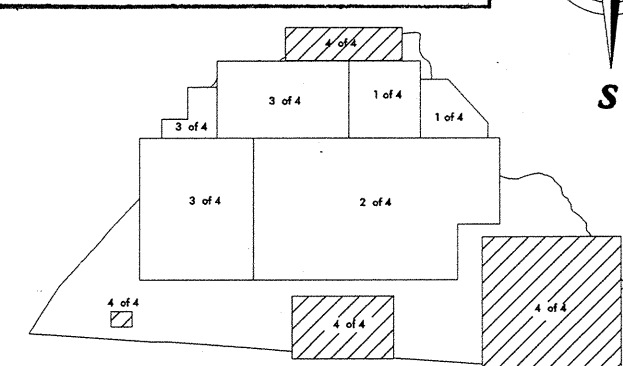
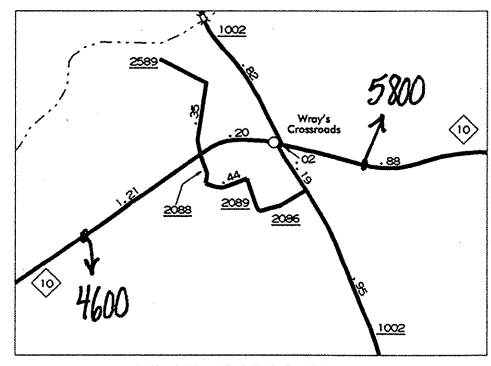
**2000**  
 ANNUAL AVERAGE  
 DAILY TRAFFIC



ENLARGED MUNICIPAL AND SUBURBAN AREAS  
**CATAWBA COUNTY**  
 NORTH CAROLINA

PREPARED BY THE  
 NORTH CAROLINA DEPARTMENT OF TRANSPORTATION  
 DIVISION OF HIGHWAYS - GIS UNIT

IN COOPERATION WITH THE  
 U.S. DEPARTMENT OF TRANSPORTATION  
 FEDERAL HIGHWAY ADMINISTRATION



10,000 FOOT GRID BASED ON NORTH CAROLINA PLANE COORDINATE SYSTEM  
 NORTH CAROLINA