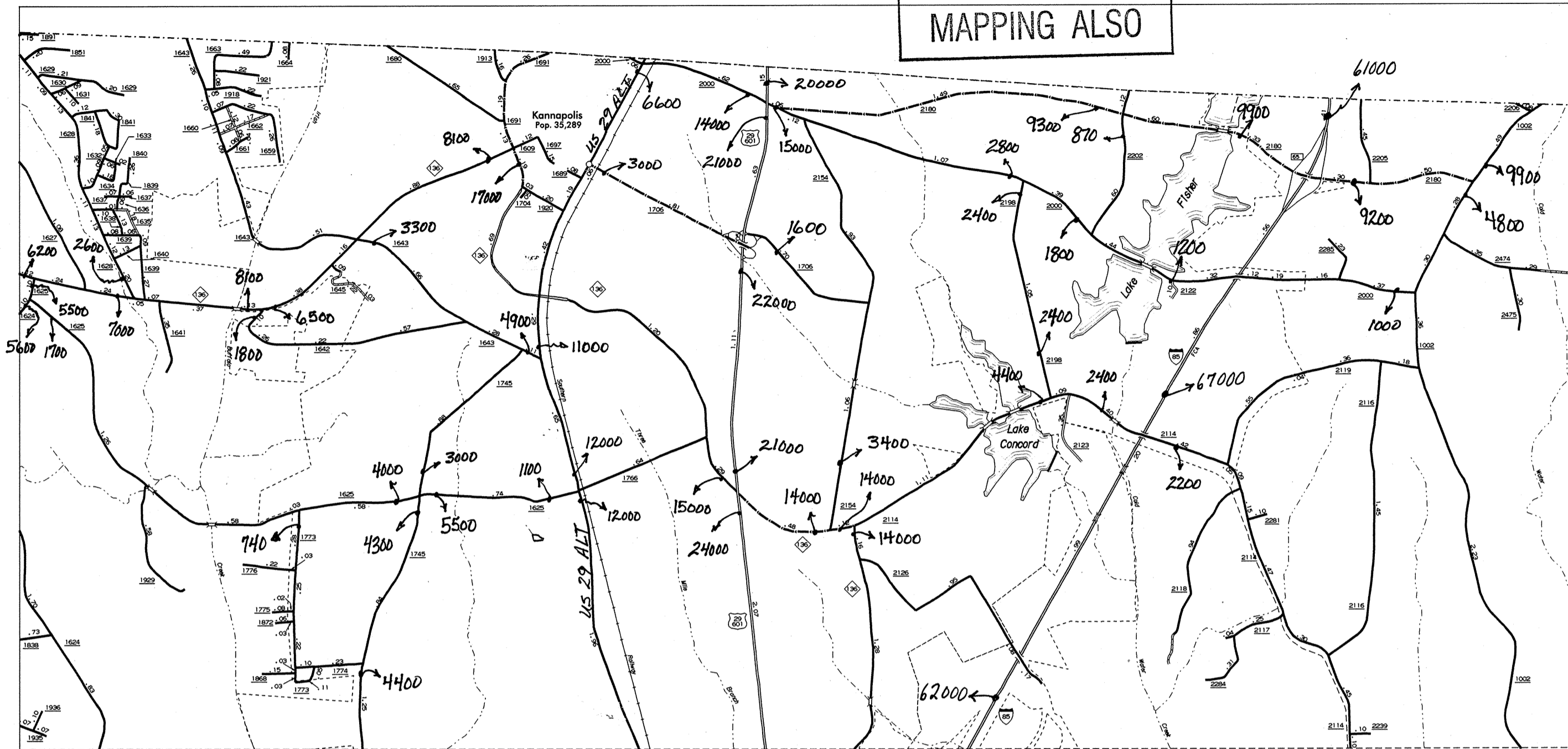
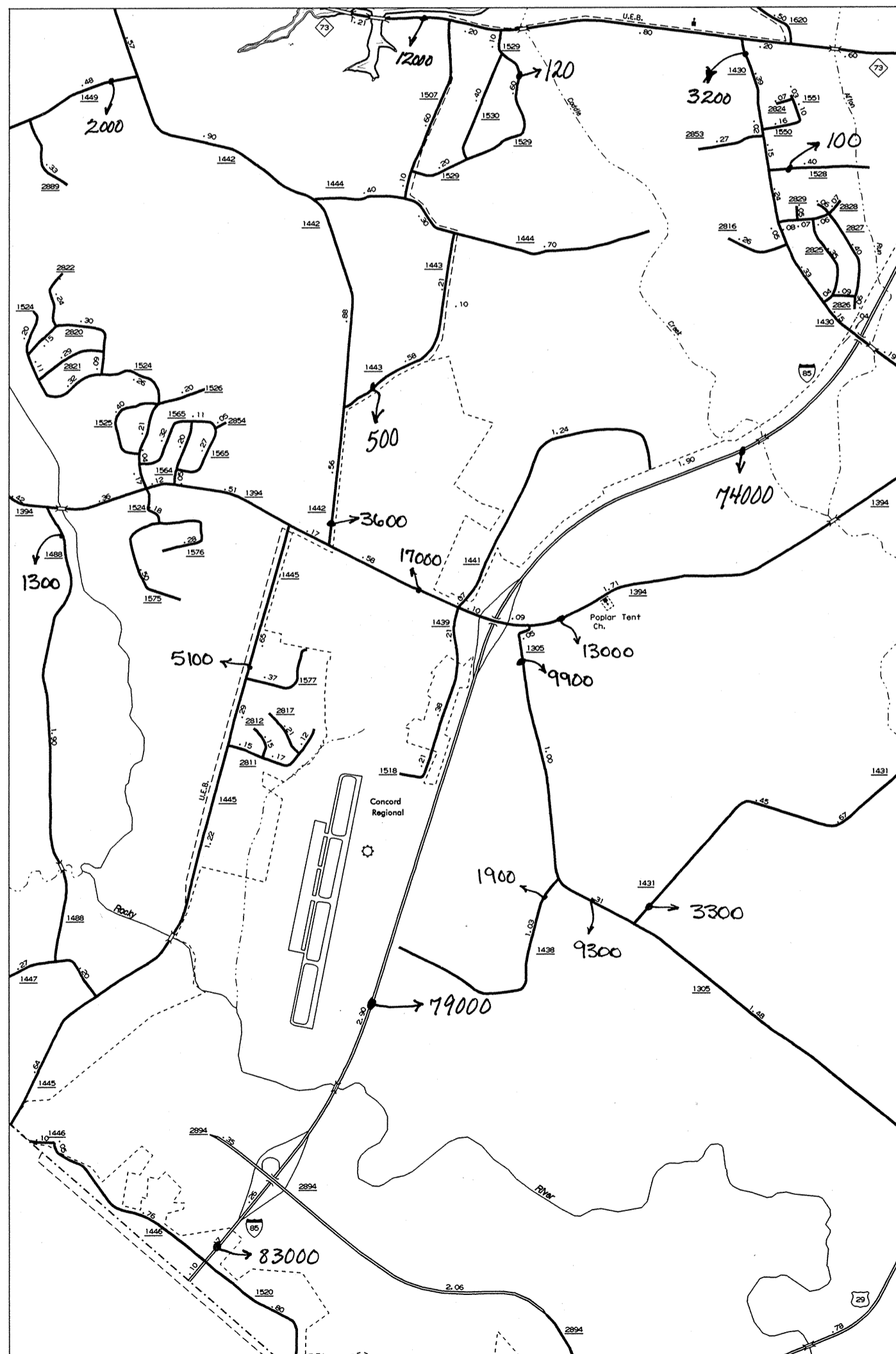


CABARRUS AND MIDLAND



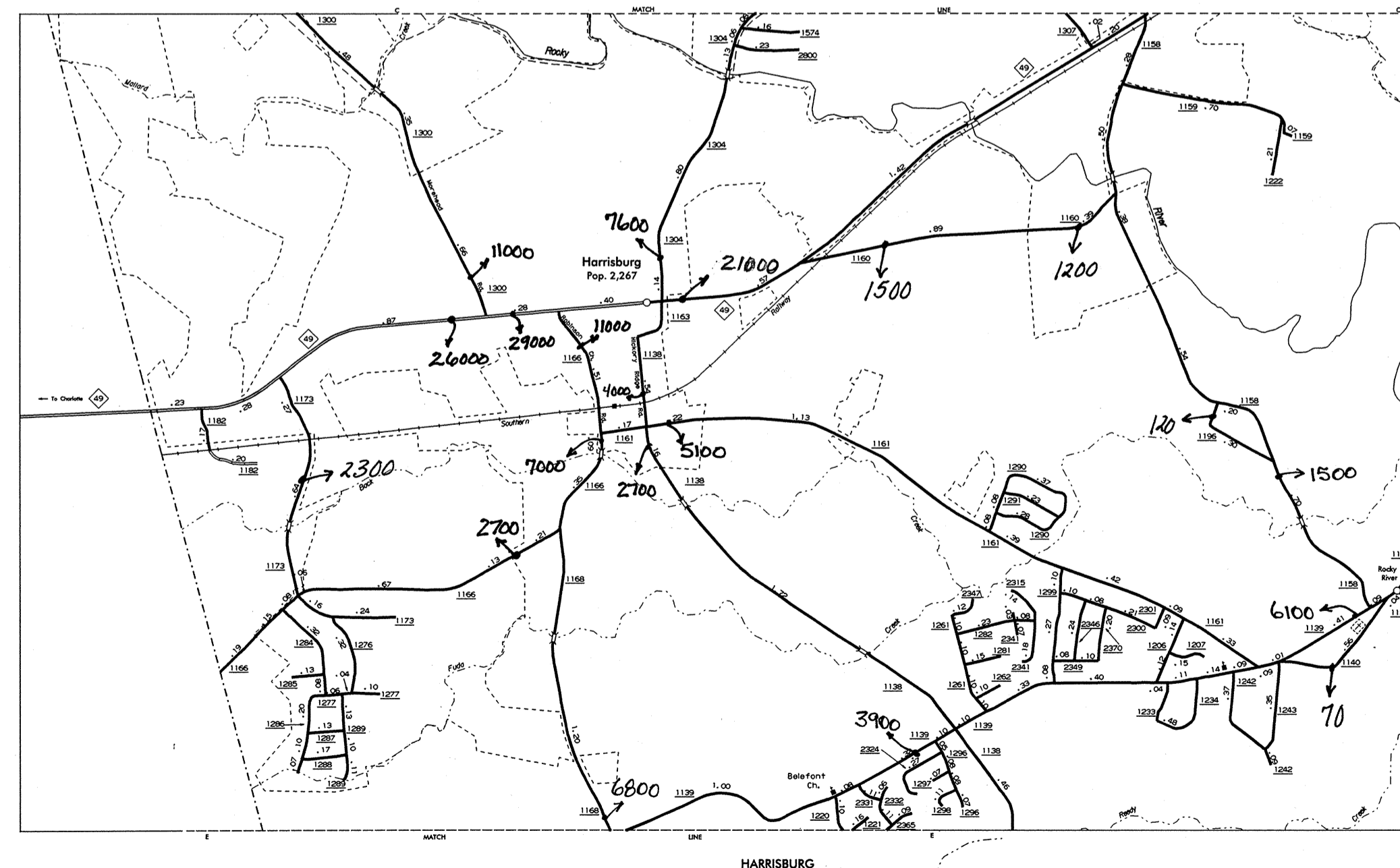
SEE URBAN
MAPPING ALSO



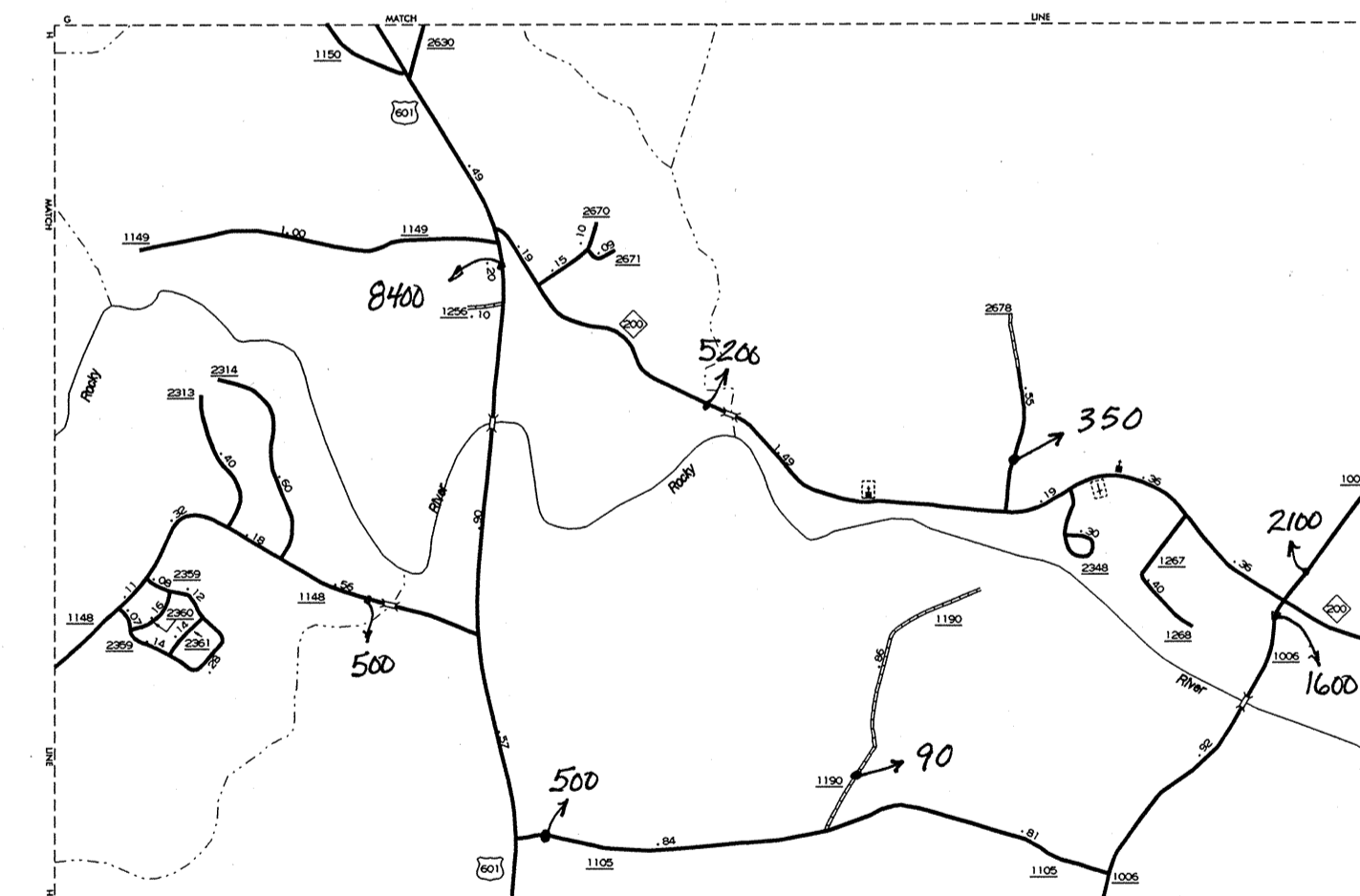
INSET 1

2000
ANNUAL AVERAGE
DAILY TRAFFIC

N.C. Department of Transportation
Statewide Planning Branch
Traffic Survey Unit
1554 Mail Service Center
Raleigh, NC 27699-1554



HARRISBURG



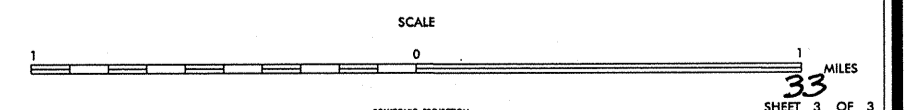
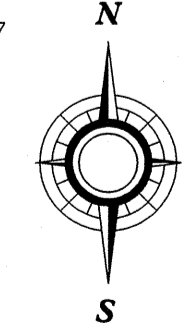
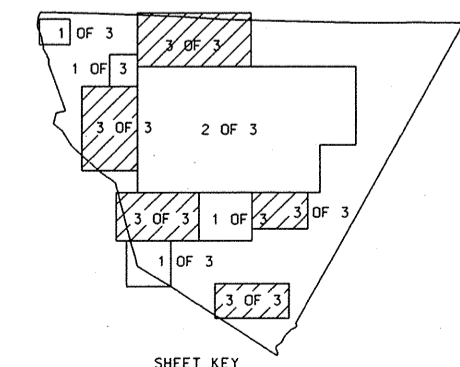
INSET 4

ENLARGED MUNICIPAL AND SUBURBAN AREAS

CABARRUS COUNTY
NORTH CAROLINA

PREPARED BY THE
NORTH CAROLINA DEPARTMENT OF TRANSPORTATION
DIVISION OF HIGHWAYS - GIS UNIT

IN COOPERATION WITH THE
U.S. DEPARTMENT OF TRANSPORTATION
FEDERAL HIGHWAY ADMINISTRATION



COPIES OF THIS MAP ARE AVAILABLE TO THE PUBLIC AT A NOMINAL COST. ADDRESS: MAPS, N.C. DEPARTMENT OF TRANSPORTATION, DIVISION OF HIGHWAYS, 1554 MAIL SERVICE CENTER, RALEIGH, NORTH CAROLINA, 27699-1554
 REVISED: ER 10/24/97, AM 2/25/98, ED 4/19/99, LM 7/31/99
 COURTESY: FIG. 7