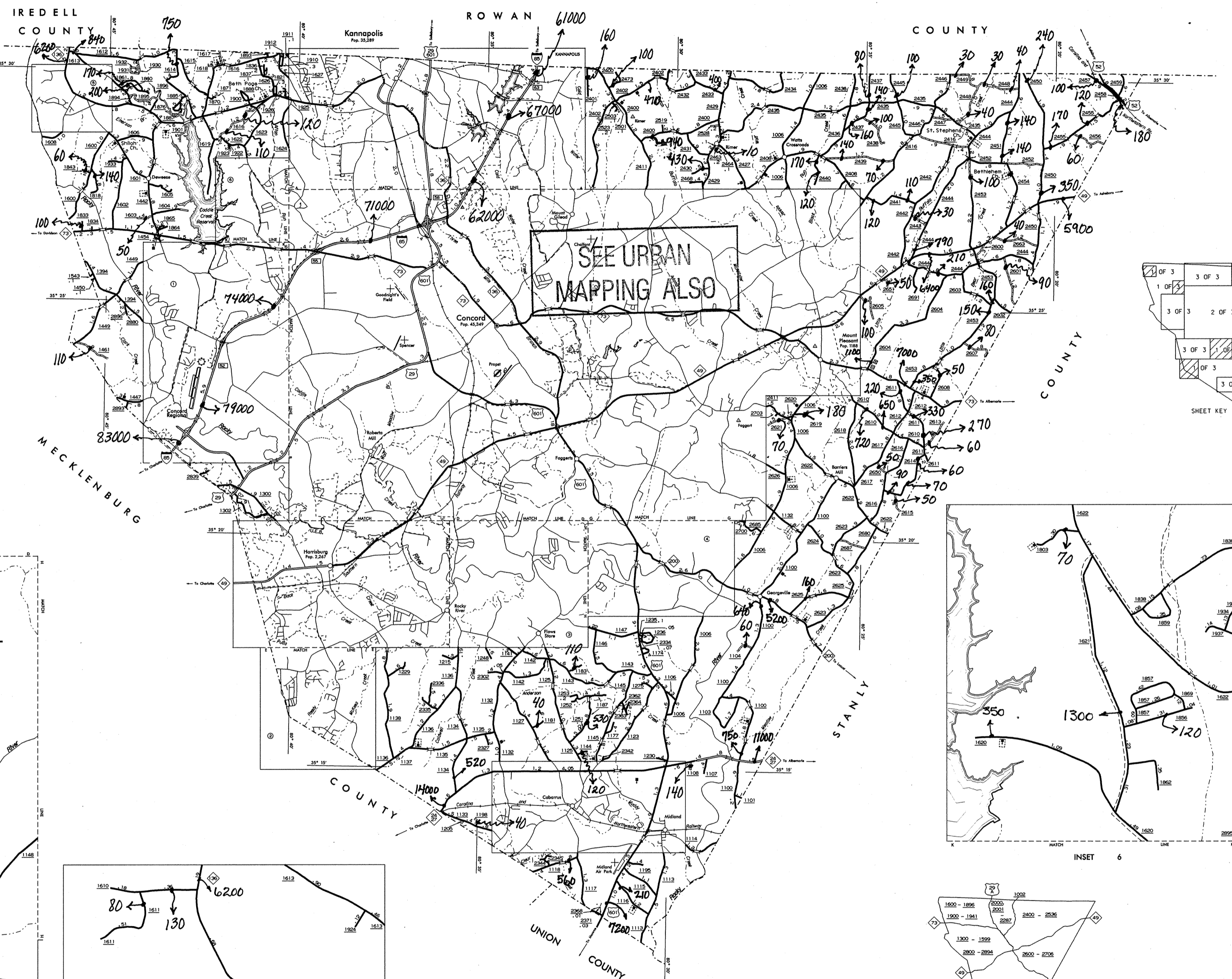
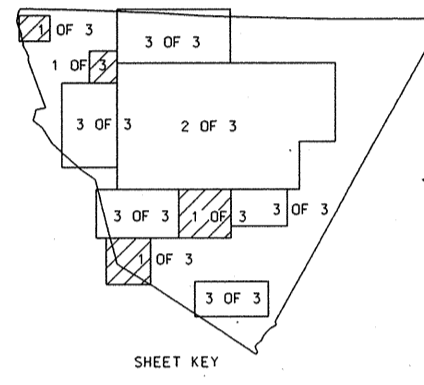


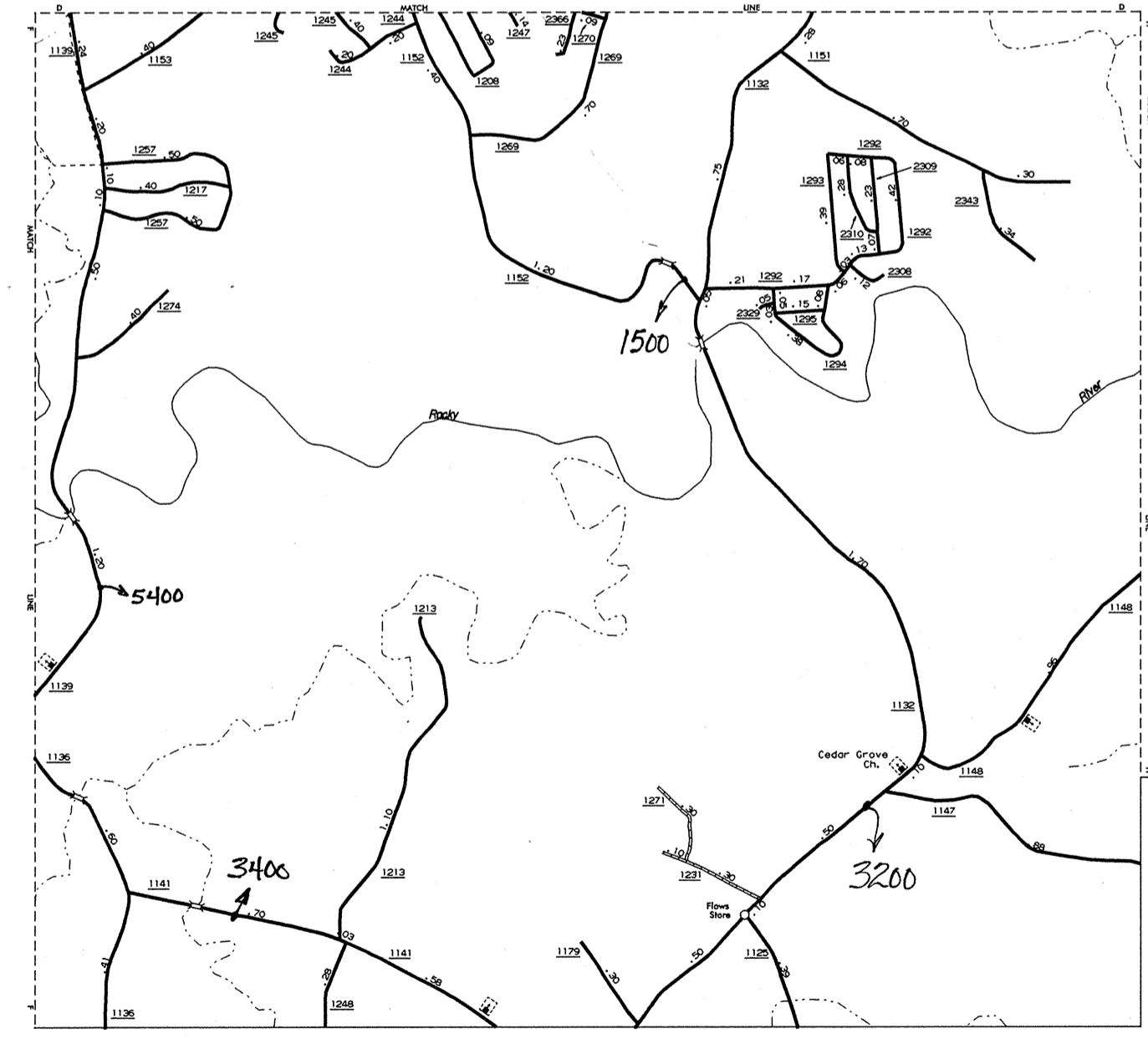
INSET 2



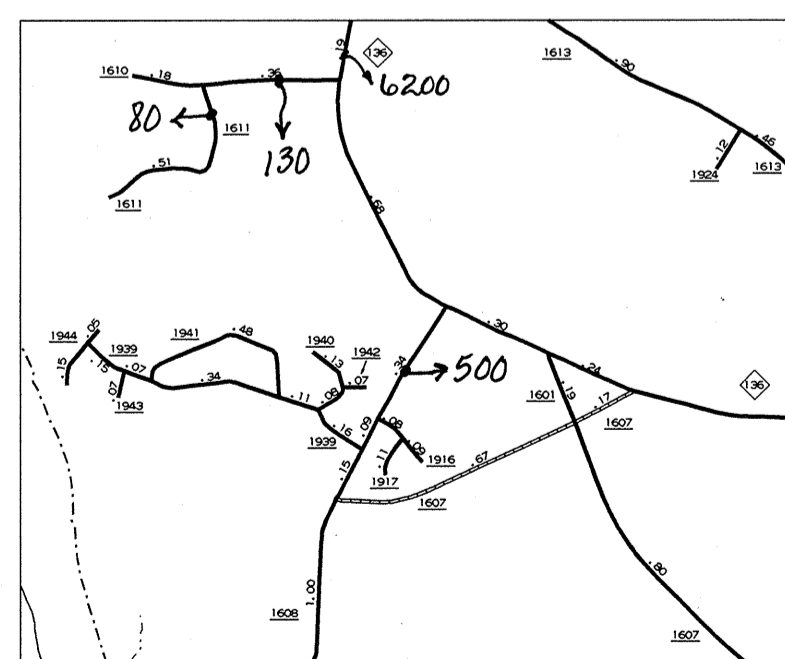
- LEGEND**
- PAVED OR UNIMPROVED ROAD
  - GRADED AND DRAINED ROAD
  - SOIL, GRAVEL OR STONE SURFACED ROAD
  - HARD SURFACED ROAD
  - 4 LANE UNDIVIDED HIGHWAY
  - DIVIDED HIGHWAY
  - HIGHWAY WITH FRONTAGE ROADS
  - FULL CONTROL ACCESS
  - NON-SYSTEM ROAD
  - PROJECTED LOCATION
  - INTERSECTION DISTANCE
  - TRAFFIC CIRCLE
  - ⊕ HIGHWAY INTERCHANGE
  - ⊕ DETAILED HIGHWAY INTERCHANGE
  - ⊕ ROAD THROUGH MOUNTAIN PASS
  - ⊕ HIGHWAY BRIDGE
  - ⊕ UNDERPASS
  - ⊕ OVERPASS
  - ⊕ DRAW SPAN ON BRIDGE
  - ⊕ HIGHWAY TUNNEL
  - ⊕ FORD
  - ⊕ INTERSTATE HIGHWAY
  - ⊕ U.S. NUMBERED HIGHWAY
  - ⊕ N.C. NUMBERED HIGHWAY
  - ⊕ U.S. NUMBERED BICYCLE ROUTE
  - ⊕ N.C. NUMBERED BICYCLE ROUTE
  - ⊕ INTERSTATE INTERCHANGE NUMBER
  - ⊕ SECONDARY ROAD NUMBER
  - ⊕ CABLE
  - ⊕ RAILROAD ANY NUMBER OF TRACKS USED BY SINGLE OPERATING COMPANY
  - ⊕ RAILROAD ANY NUMBER OF TRACKS USED BY MORE THAN ONE OPERATING COMPANY ON SAME OR ADJACENT RIGHTS-OF-WAY
  - ⊕ RAILROAD STATION
  - ⊕ GRADE CROSSING
  - ⊕ UNDERPASS
  - ⊕ OVERPASS
  - ⊕ RAILROAD TUNNEL
  - ⊕ INSET AREA
  - ⊕ URBAN EXTENSION BOUNDARY LINE
  - ⊕ RESERVATION OR PARK BOUNDARY LINE
  - ⊕ CITY LIMIT
  - ⊕ COUNTY LINE
  - ⊕ STATE LINE
  - ⊕ INCORPORATED CITY OR VILLAGE (GENERALIZED)
  - ⊕ FREE OR TOLL FERRY
  - ⊕ CANAL
  - ⊕ NARROW STREAM
  - ⊕ WIDE STREAM
  - ⊕ DAM WITH LOCK
  - ⊕ DAM
  - ⊕ RESERVOIR, POND, OR LAKE
  - ⊕ COMMUNITY AND TOWN CENTER
  - ⊕ COUNTY SEAT
  - ⊕ SCHOOL
  - ⊕ COLLEGE OR UNIVERSITY
  - ⊕ HOSPITAL
  - ⊕ CHURCH
  - ⊕ CHURCH WITH CEMETERY
  - ⊕ CEMETERY
  - ⊕ PARKING STATION
  - ⊕ CORRECTIONAL OR PENAL INSTN.
  - ⊕ HIGHWAY GARAGE OR MAINT. YARD
  - ⊕ HIGHWAY DIV. OR DIST. OFFICE
  - ⊕ WEIGHT STATION
  - ⊕ MONUMENT-SMALL HISTORICAL SITE
  - ⊕ LIGHTHOUSE
  - ⊕ MOUNTAIN PEAK
  - ⊕ BEST AREA
  - ⊕ TRIANGULATION STATION
  - ⊕ COAST GUARD STATION
  - ⊕ MILITARY AIRFIELD
  - ⊕ COMMERCIAL OR MUNICIPAL FIELD
  - ⊕ HANGAR ON FIELD
  - ⊕ LANDING STRIP
  - ⊕ MARKED AUXILIARY FIELD



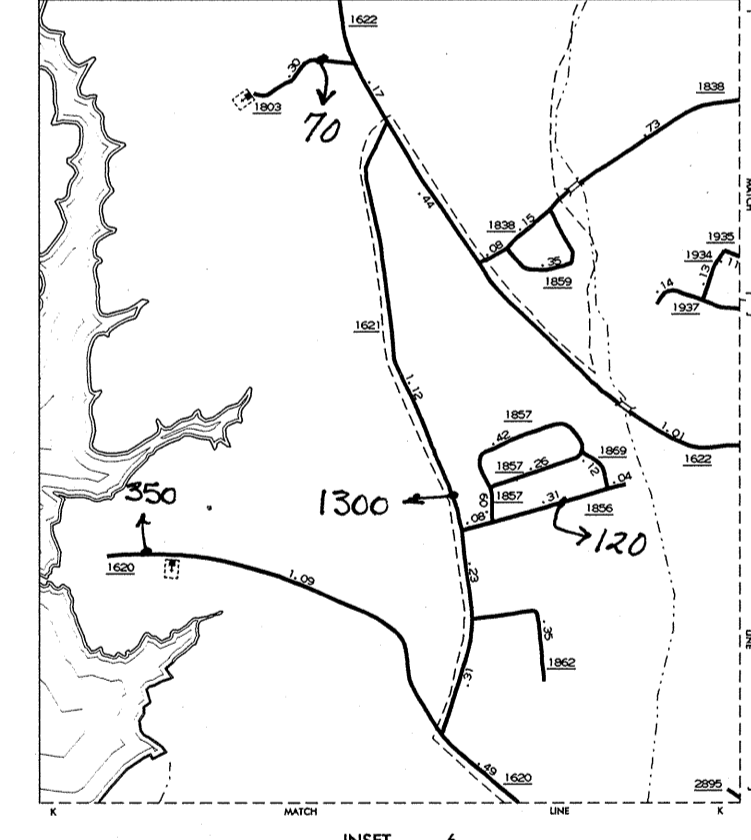
SHEET KEY



INSET 3



INSET 5



INSET 6

**2000**  
ANNUAL AVERAGE  
DAILY TRAFFIC

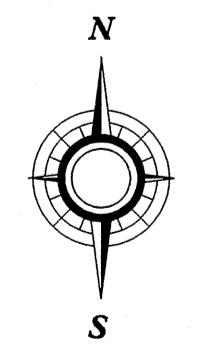
**CABARRUS COUNTY**

NORTH CAROLINA

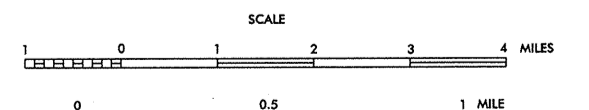
PREPARED BY THE  
NORTH CAROLINA DEPARTMENT OF TRANSPORTATION  
DIVISION OF HIGHWAYS - GIS UNIT

IN COOPERATION WITH THE  
U.S. DEPARTMENT OF TRANSPORTATION  
FEDERAL HIGHWAY ADMINISTRATION

N.C. Department of Transportation  
Statewide Planning Branch  
Traffic Survey Unit  
1554 Mail Service Center  
Raleigh, NC 27699-1554



NOTE: MAP INCLUDES ONLY STATE MAINTAINED ROADS  
OR IMPORTANT NON-SYSTEM ROADS.  
MILEAGE NOT SHOWN ON FRONTAGE ROADS.  
ROADS SHOWN AS OF JULY 31, 1999.



SCALE FOR ENLARGEMENTS  
10,000 FOOT GRID BASED ON NORTH CAROLINA PLANE COORDINATE SYSTEM  
REVERSE PROJECTION

COPIES OF THIS MAP ARE AVAILABLE TO THE PUBLIC AT A NOMINAL COST. ADDRESS: N.C. DEPARTMENT OF TRANSPORTATION, DIVISION OF HIGHWAYS, SECTION, NORTH CAROLINA, 27611  
 REVISED: ER 10/97, FAE 2/00, EQ 4/99, LM 7/99  
 CABARRUS