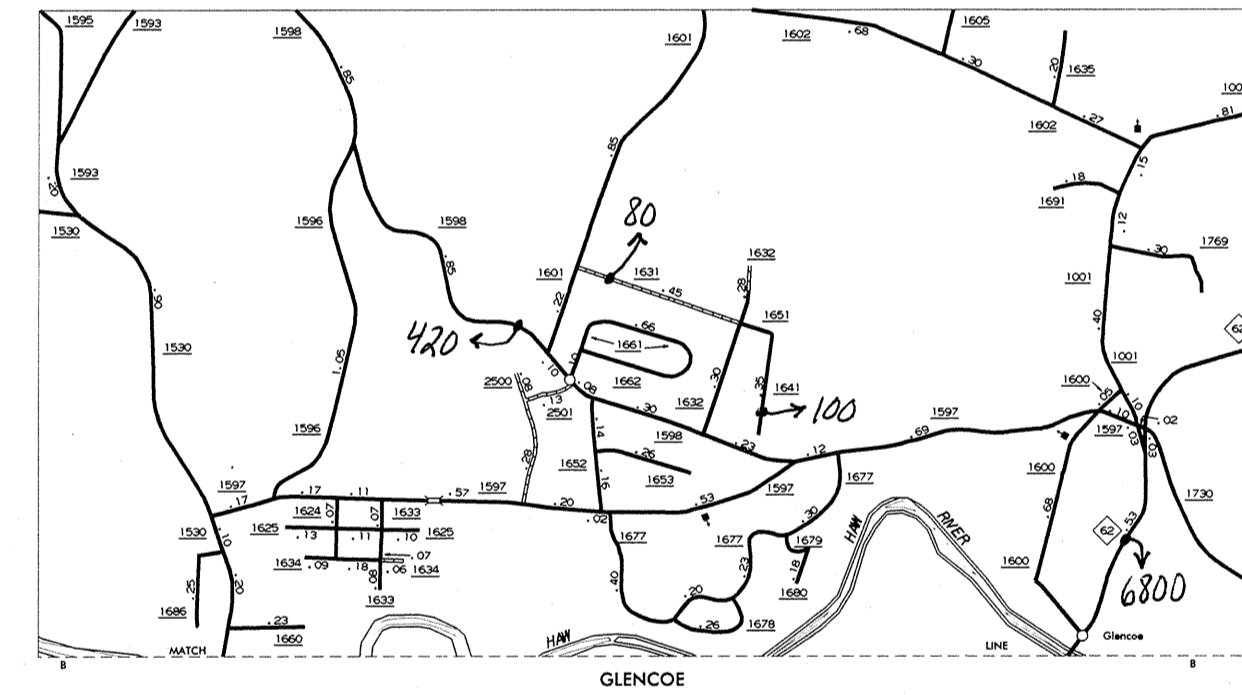
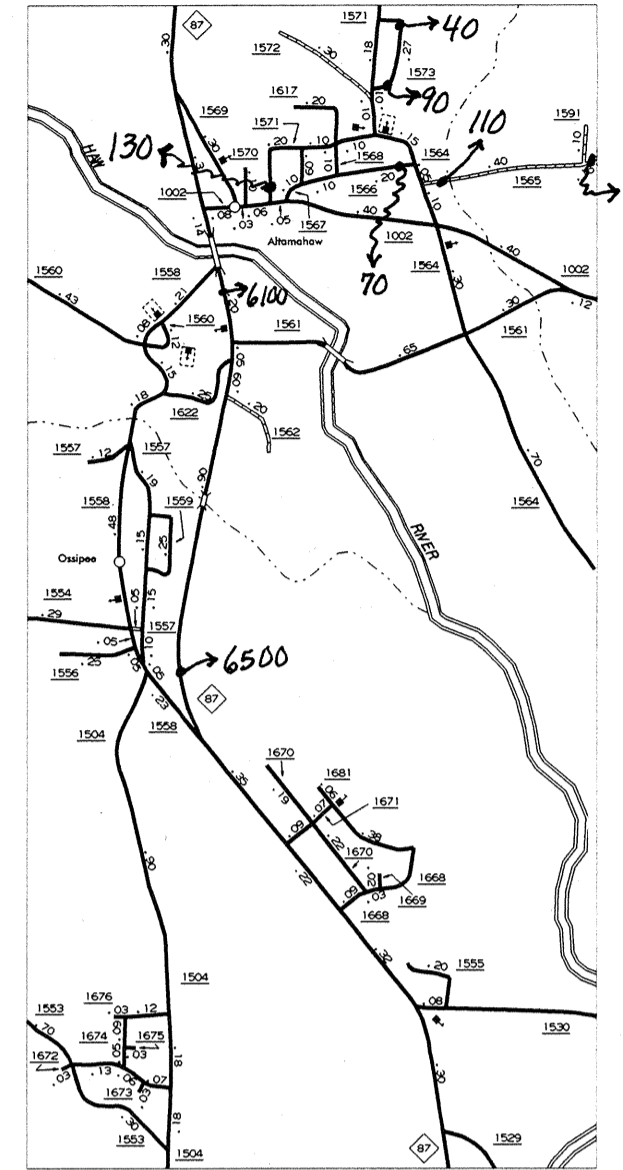
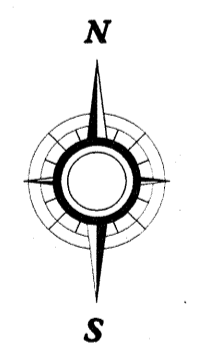


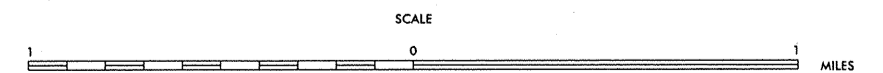
O R A N G E
C O U N T Y



2000
ANNUAL AVERAGE
DAILY TRAFFIC



ENLARGED MUNICIPAL AND SUBURBAN AREAS
ALAMANCE COUNTY
NORTH CAROLINA
PREPARED BY THE
NORTH CAROLINA DEPARTMENT OF TRANSPORTATION
DIVISION OF HIGHWAYS - GIS UNIT
IN COOPERATION WITH THE
U.S. DEPARTMENT OF TRANSPORTATION
FEDERAL HIGHWAY ADMINISTRATION



N.C. Department of Transportation
Statewide Planning Branch
Traffic Survey Unit
1554 Mail Service Center
Raleigh, NC 27699-1554

COPIES OF THIS MAP ARE AVAILABLE
TO THE PUBLIC AT A NOMINAL COST.
 MAPS, N.C. DEPARTMENT OF TRANSPORTATION
 DIVISION OF HIGHWAYS - GIS UNIT
 RALEIGH, NORTH CAROLINA 27611

REVISED
S.H. 1-1-9
REV. 12-18-97
REV. 4-17-98
REV. 4-8-99
REV. 4-28-99
REV. 8-6-99