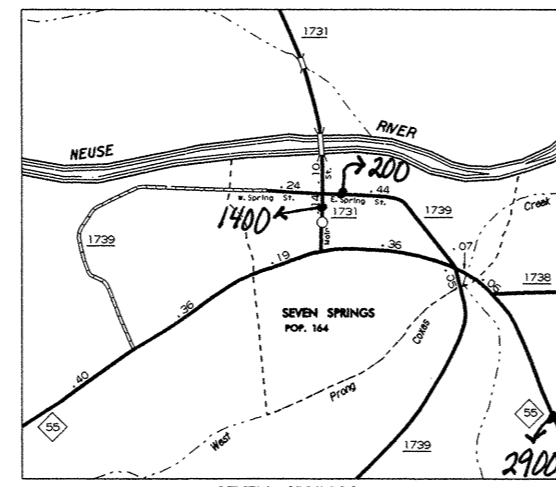
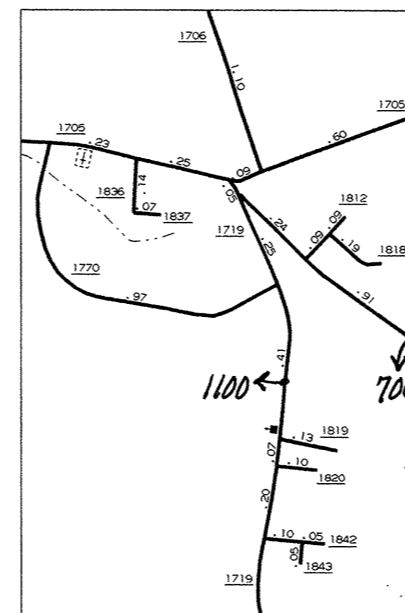


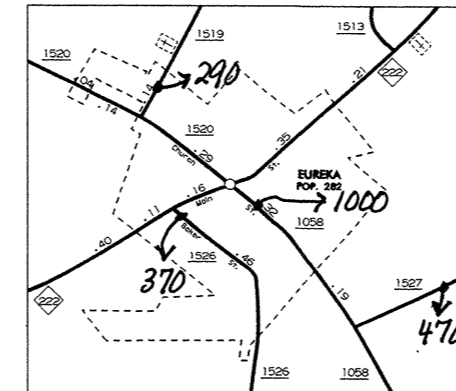
DUDLEY AND BROGEN



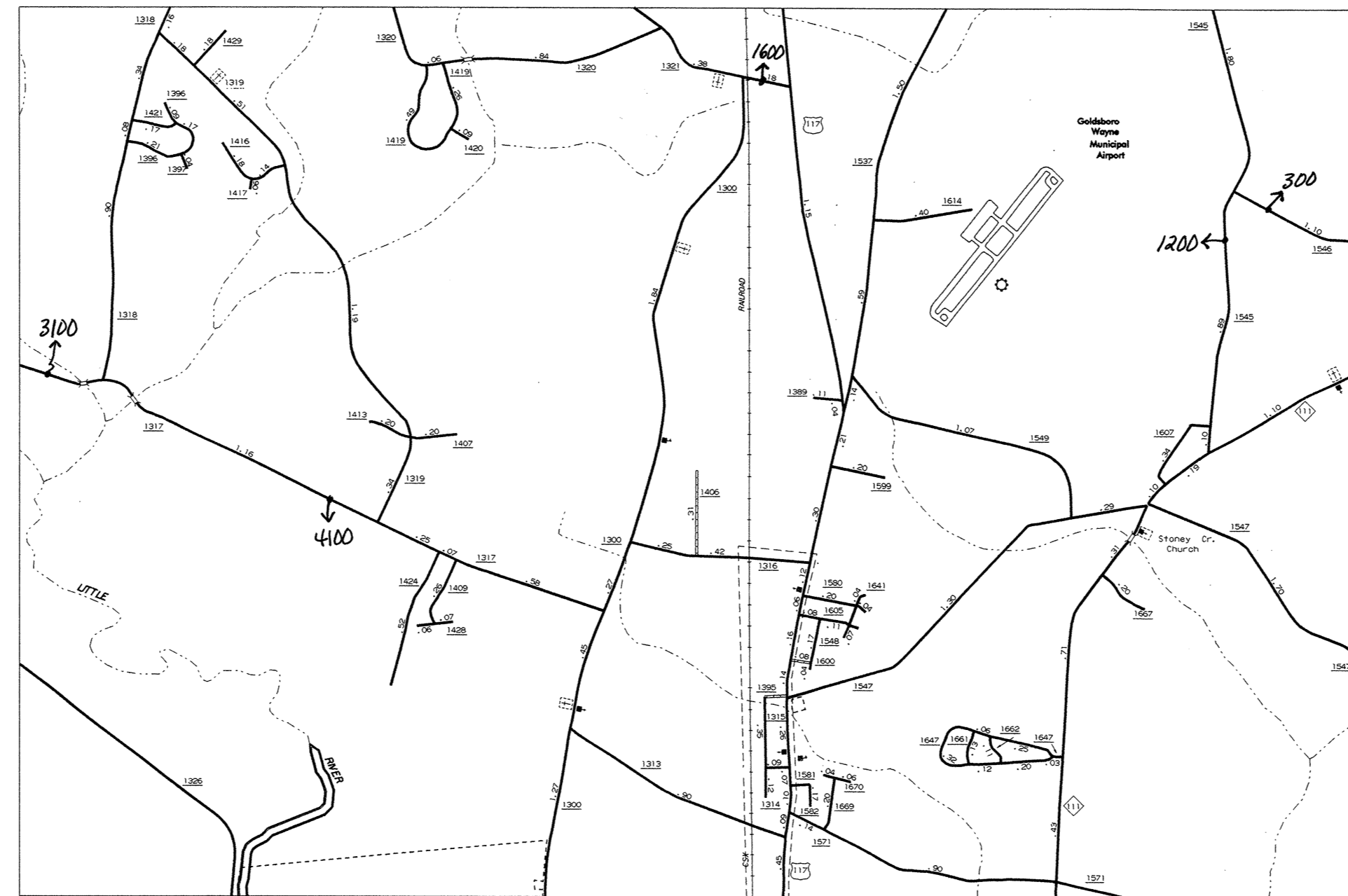
SEVEN SPRINGS



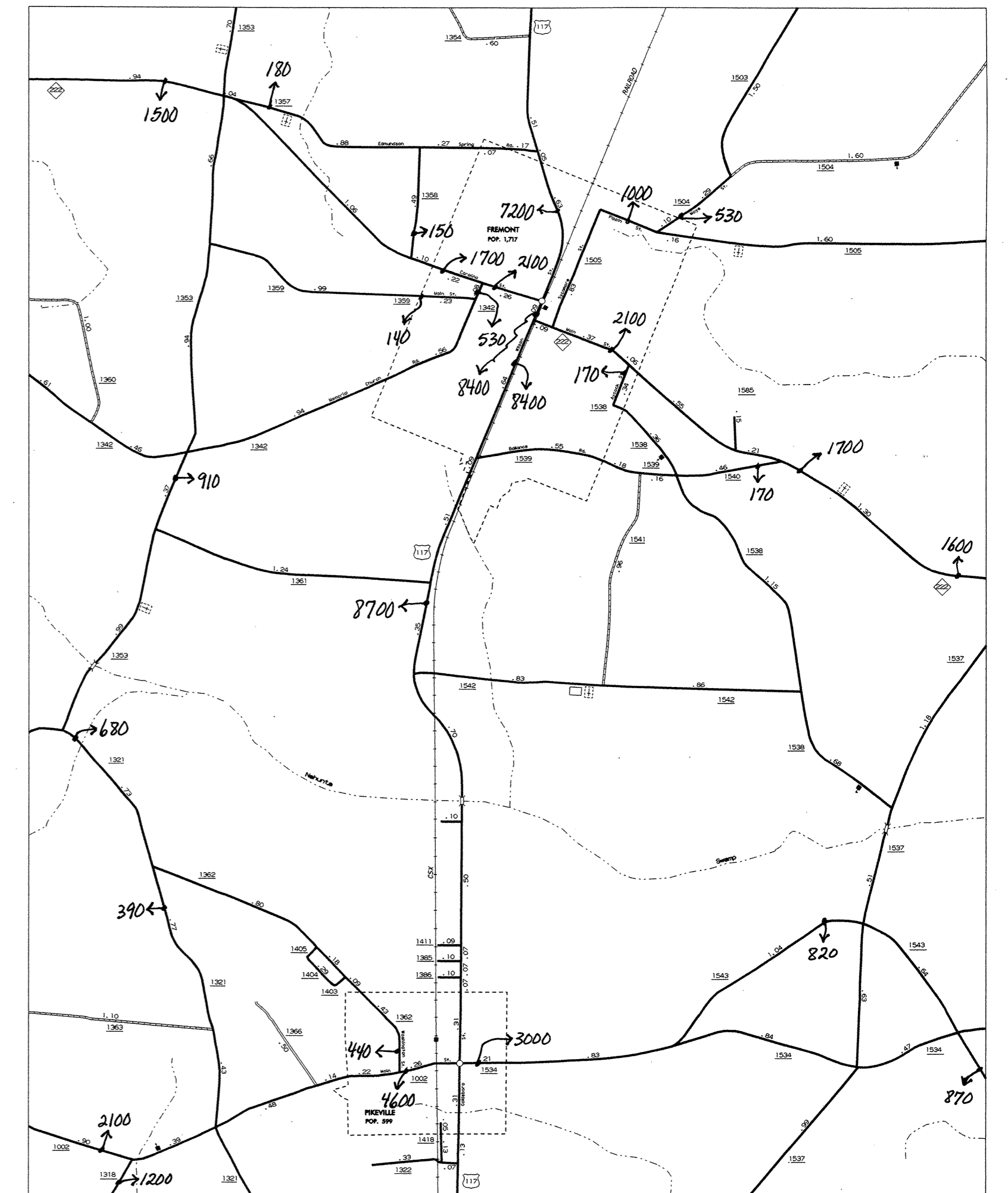
INSET 1



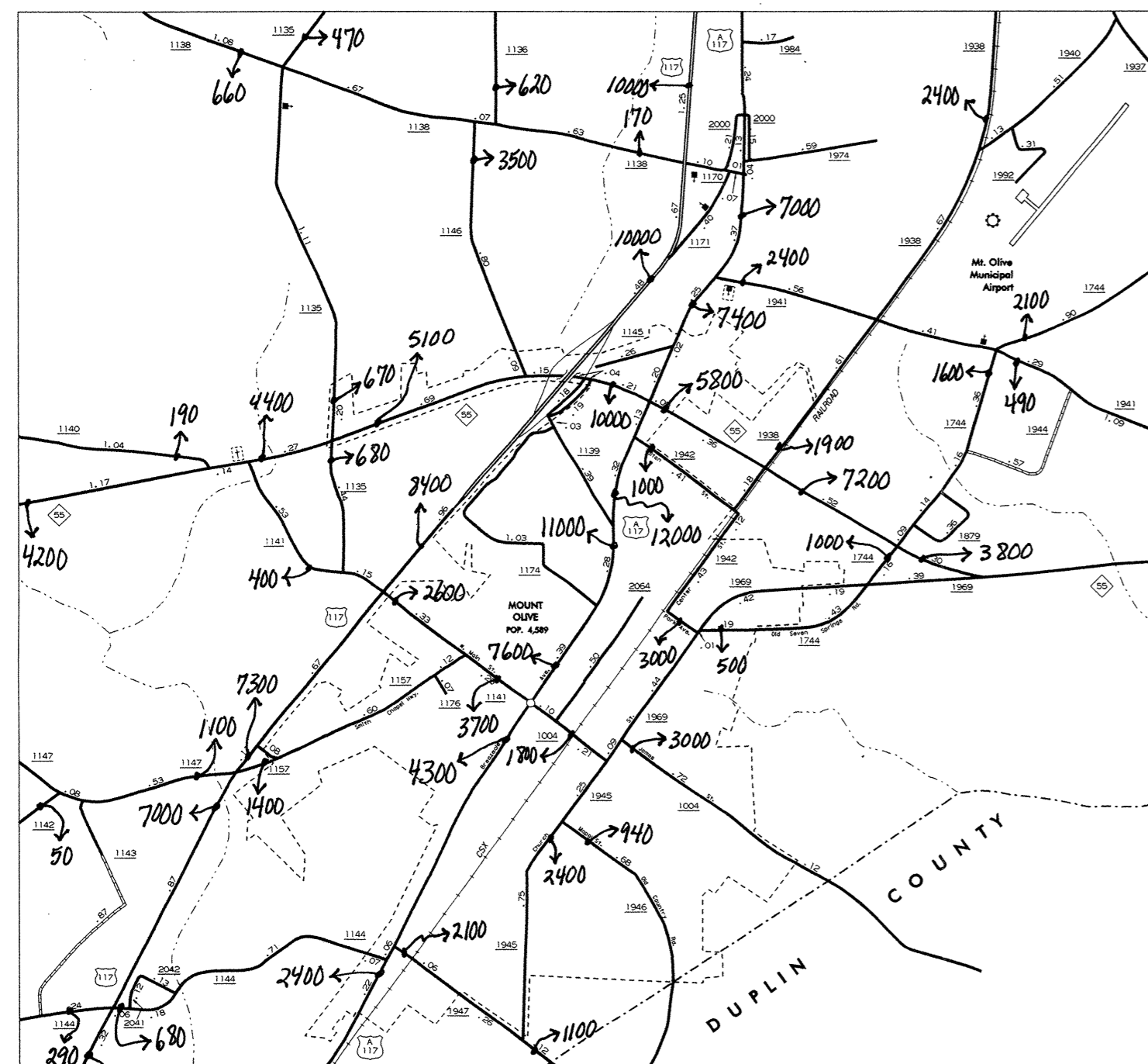
EUREKA



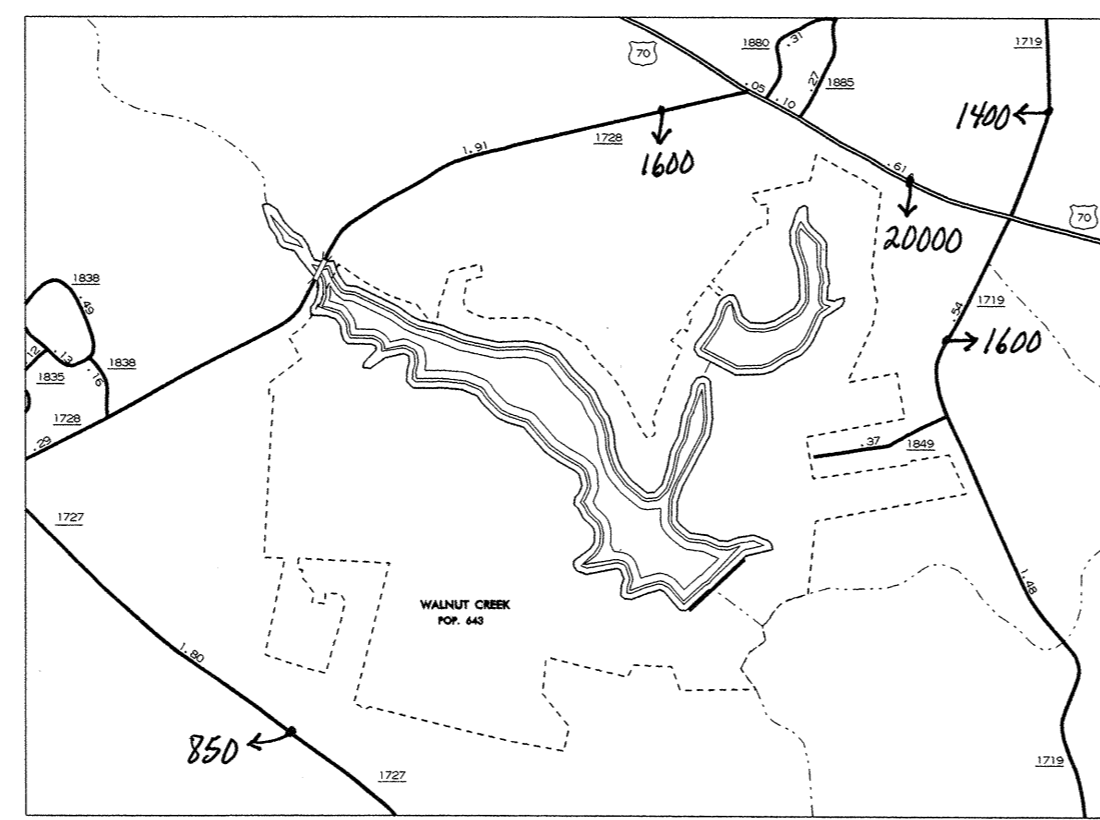
BELFAST AND VICINITY



FREMONT AND PIKEVILLE



MOUNT OLIVE



WALNUT CREEK



Some of the traffic estimates in this county were based on data collected after hurricane events in 1999. Contact the Traffic Survey Unit at (919) 733-9770 for information about a particular location or area.

N.C. Department of Transportation
Statewide Planning Branch
Traffic Survey Unit
1554 Mail Service Center
Raleigh, NC 27699-1554

1999
ANNUAL AVERAGE
DAILY TRAFFIC

ENLARGED MUNICIPAL AND SUBURBAN AREAS

WAYNE COUNTY

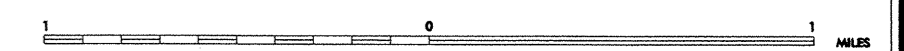
NORTH CAROLINA

PREPARED BY THE
NORTH CAROLINA DEPARTMENT OF TRANSPORTATION
DIVISION OF HIGHWAYS - GIS UNIT

IN COOPERATION WITH THE
U.S. DEPARTMENT OF TRANSPORTATION
FEDERAL HIGHWAY ADMINISTRATION



SCALE



10,000 FOOT GRID BASED ON NORTH CAROLINA PLANE COORDINATE SYSTEM
NORTH CAROLINA

269

SHEET 3 OF 3