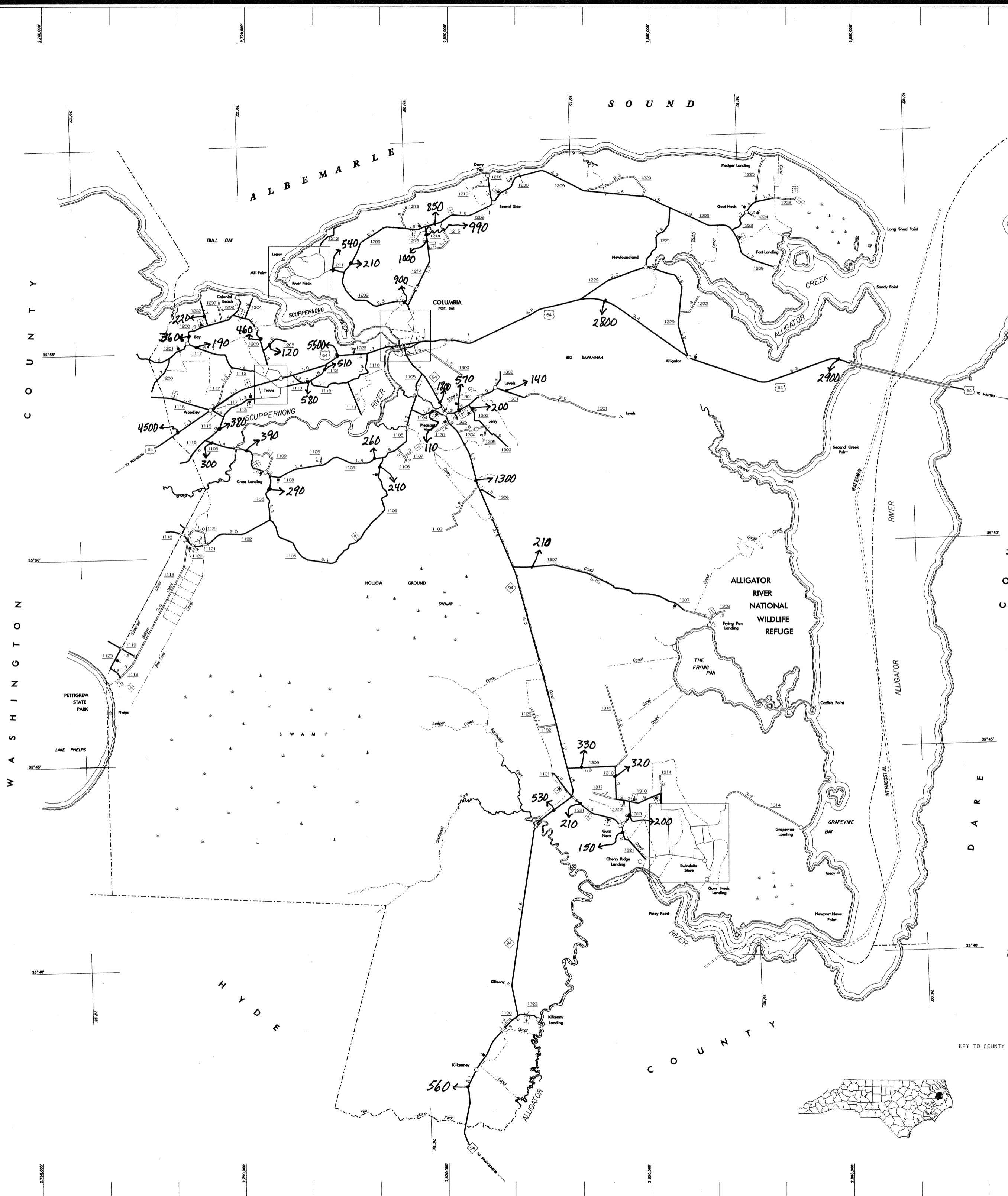
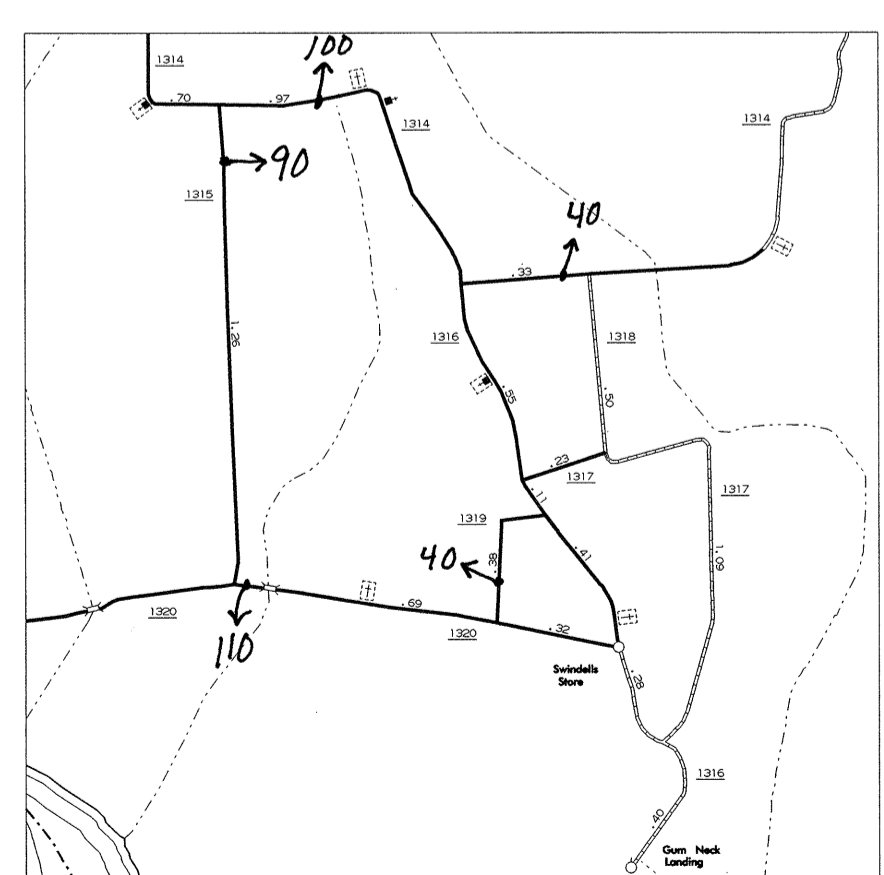
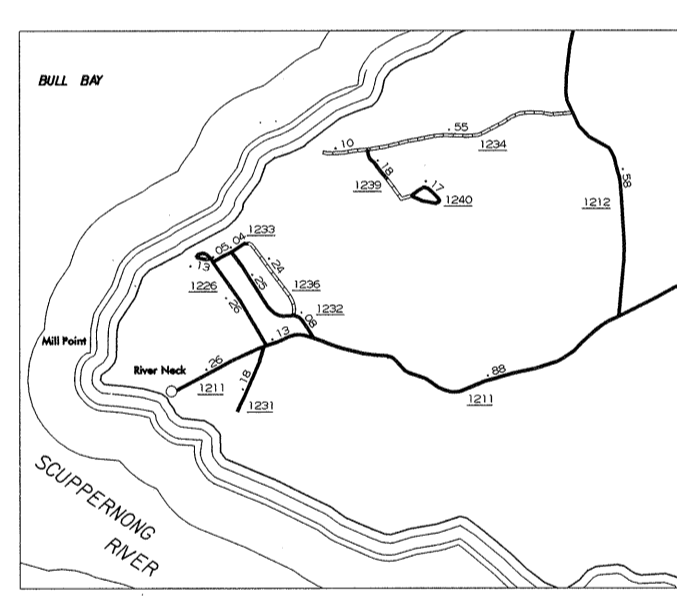
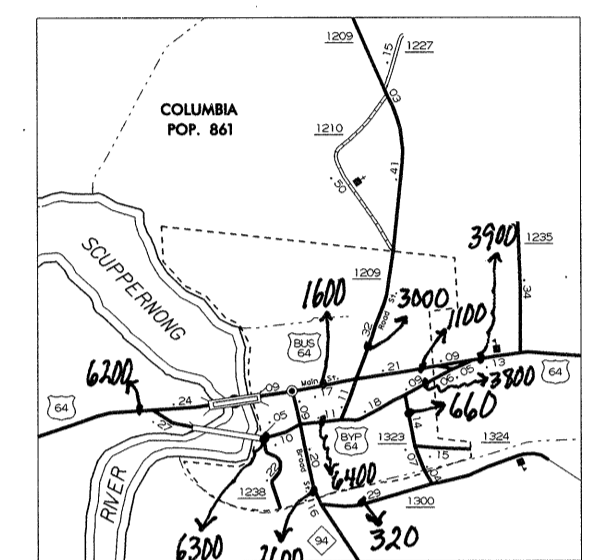
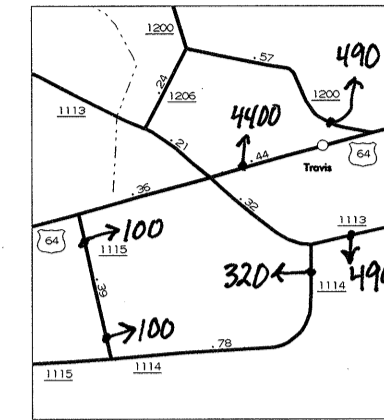


COPIES OF THIS MAP ARE AVAILABLE
 FROM THE PUBLIC AT A NOMINAL COST.
 ADDRESS:
 DIVISION OF HIGHWAYS OF TRANSPORTATION
 1554 MAIL SERVICE CENTER
 RALEIGH, NORTH CAROLINA 27699-1554

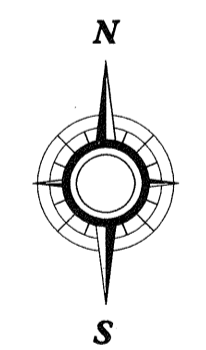
REVISED

11-95	114
12-95	114
1-96	114
2-96	114
3-96	114
4-96	114
5-96	114
6-96	114
7-96	114
8-96	114
9-96	114
10-96	114
11-96	114
12-96	114
1-97	114
2-97	114
3-97	114
4-97	114
5-97	114
6-97	114
7-97	114
8-97	114
9-97	114
10-97	114
11-97	114
12-97	114
1-98	114
2-98	114
3-98	114
4-98	114
5-98	114
6-98	114
7-98	114
8-98	114
9-98	114
10-98	114
11-98	114
12-98	114
1-99	114
2-99	114
3-99	114
4-99	114
5-99	114
6-99	114
7-99	114
8-99	114
9-99	114
10-99	114
11-99	114
12-99	114
1-00	114
2-00	114
3-00	114
4-00	114
5-00	114
6-00	114
7-00	114
8-00	114
9-00	114
10-00	114
11-00	114
12-00	114
1-01	114
2-01	114
3-01	114
4-01	114
5-01	114
6-01	114
7-01	114
8-01	114
9-01	114
10-01	114
11-01	114
12-01	114
1-02	114
2-02	114
3-02	114
4-02	114
5-02	114
6-02	114
7-02	114
8-02	114
9-02	114
10-02	114
11-02	114
12-02	114
1-03	114
2-03	114
3-03	114
4-03	114
5-03	114
6-03	114
7-03	114
8-03	114
9-03	114
10-03	114
11-03	114
12-03	114
1-04	114
2-04	114
3-04	114
4-04	114
5-04	114
6-04	114
7-04	114
8-04	114
9-04	114
10-04	114
11-04	114
12-04	114
1-05	114
2-05	114
3-05	114
4-05	114
5-05	114
6-05	114
7-05	114
8-05	114
9-05	114
10-05	114
11-05	114
12-05	114
1-06	114
2-06	114
3-06	114
4-06	114
5-06	114
6-06	114
7-06	114
8-06	114
9-06	114
10-06	114
11-06	114
12-06	114
1-07	114
2-07	114
3-07	114
4-07	114
5-07	114
6-07	114
7-07	114
8-07	114
9-07	114
10-07	114
11-07	114
12-07	114
1-08	114
2-08	114
3-08	114
4-08	114
5-08	114
6-08	114
7-08	114
8-08	114
9-08	114
10-08	114
11-08	114
12-08	114
1-09	114
2-09	114
3-09	114
4-09	114
5-09	114
6-09	114
7-09	114
8-09	114
9-09	114
10-09	114
11-09	114
12-09	114
1-10	114
2-10	114
3-10	114
4-10	114
5-10	114
6-10	114
7-10	114
8-10	114
9-10	114
10-10	114
11-10	114
12-10	114
1-11	114
2-11	114
3-11	114
4-11	114
5-11	114
6-11	114
7-11	114
8-11	114
9-11	114
10-11	114
11-11	114
12-11	114
1-12	114
2-12	114
3-12	114
4-12	114
5-12	114
6-12	114
7-12	114
8-12	114
9-12	114
10-12	114
11-12	114
12-12	114
1-13	114
2-13	114
3-13	114
4-13	114
5-13	114
6-13	114
7-13	114
8-13	114
9-13	114
10-13	114
11-13	114
12-13	114
1-14	114
2-14	114
3-14	114
4-14	114
5-14	114
6-14	114
7-14	114
8-14	114
9-14	114
10-14	114
11-14	114
12-14	114
1-15	114
2-15	114
3-15	114
4-15	114
5-15	114
6-15	114
7-15	114
8-15	114
9-15	114
10-15	114
11-15	114
12-15	114
1-16	114
2-16	114
3-16	114
4-16	114
5-16	114
6-16	114
7-16	114
8-16	114
9-16	114
10-16	114
11-16	114
12-16	114
1-17	114
2-17	114
3-17	114
4-17	114
5-17	114
6-17	114
7-17	114
8-17	114
9-17	114
10-17	114
11-17	114
12-17	114
1-18	114
2-18	114
3-18	114
4-18	114
5-18	114
6-18	114
7-18	114
8-18	114
9-18	114
10-18	114
11-18	114
12-18	114
1-19	114
2-19	114
3-19	114
4-19	114
5-19	114
6-19	114
7-19	114
8-19	114
9-19	114
10-19	114
11-19	114
12-19	114
1-20	114
2-20	114
3-20	114
4-20	114
5-20	114
6-20	114
7-20	114
8-20	114
9-20	114
10-20	114
11-20	114
12-20	114



Some of the traffic estimates in this county were based on data collected after hurricane events in 1999. Contact the Traffic Survey Unit at (919) 733-9770 for information about a particular location or area.

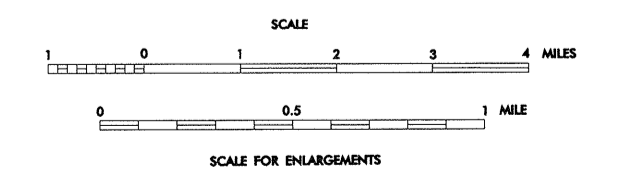
N.C. Department of Transportation
 Statewide Planning Branch
 Traffic Survey Unit
 1554 Mail Service Center
 Raleigh, NC 27699-1554



1999 ANNUAL AVERAGE DAILY TRAFFIC

TYRRELL COUNTY NORTH CAROLINA

PREPARED BY THE
 NORTH CAROLINA DEPARTMENT OF TRANSPORTATION
 DIVISION OF HIGHWAYS - GIS UNIT
 IN COOPERATION WITH THE
 U.S. DEPARTMENT OF TRANSPORTATION
 FEDERAL HIGHWAY ADMINISTRATION



NOTE: MAP INCLUDES ONLY STATE MAINTAINED ROADS OR IMPORTANT NON-SYSTEM ROADS. MILEAGE NOT SHOWN ON FRONTAGE ROADS. ROADS SHOWN AS OF JAN. 1, 1995.