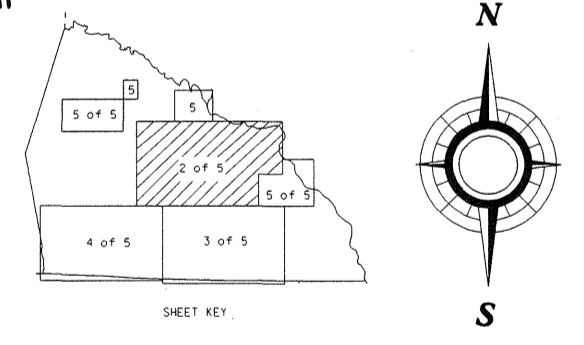


**1999
ANNUAL AVERAGE
DAILY TRAFFIC**

N.C. Department of Transportation
Statewide Planning Branch
Traffic Survey Unit
1554 Mail Service Center
Raleigh, NC 27699-1554

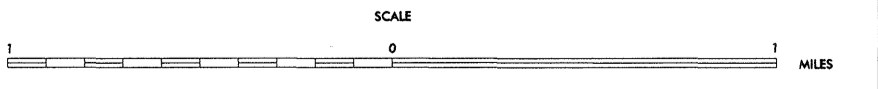


ENLARGED MUNICIPAL AND SUBURBAN AREAS

ROWAN COUNTY NORTH CAROLINA

PREPARED BY THE
NORTH CAROLINA DEPARTMENT OF TRANSPORTATION
DIVISION OF HIGHWAYS - GIS UNIT

IN COOPERATION WITH THE
U.S. DEPARTMENT OF TRANSPORTATION
FEDERAL HIGHWAY ADMINISTRATION



COPIES OF THIS MAP ARE AVAILABLE
 TO THE PUBLIC AT A MINIMAL COST.
 ADDRESS: N.C. DEPARTMENT OF TRANSPORTATION
 DIVISION OF HIGHWAYS
 RALEIGH, NORTH CAROLINA 27611

REVISED
JDS 6/9/96